

# WILDFIRE MITIGATION PLAN 2025

## Riverside Public Utilities

**City Council**  
June 24, 2025

RiversideCA.gov

1

## BACKGROUND

### **Public Utilities Code Section 8387 :**

1. Every electric utility in California is required to construct, maintain, and operate their electrical system in a manner that minimizes the risk of wildfire
2. All utilities are required to prepare a Wildfire Mitigation Plan (WMP) and update the plan annually
  - a. Content is specified and prescriptive – WMP is a compliance document
  - b. An independent evaluator with experience in assessing the safe operation of electrical infrastructure must review the WMP (every three years)
  - c. WMP and the independent evaluator report (when applicable) must be presented at a public meeting of the utility's governing board
  - d. Reports must be posted on the utility's website
  - e. Reports must be submitted to the State's Wildfire Safety Advisory Board



2

RiversideCA.gov

2

# WILDFIRE MITIGATION PLAN

Identifies and addresses the following:

1. High Fire Threat Districts (HFTD) in RPU Service Territory
2. RPU electric infrastructure located within the HFTD
3. Assessment of fire risk posed by electric infrastructure
4. Preventative strategies to reduce risk
5. Customer support and communications in the event of a de-energization
6. Metrics and assessment



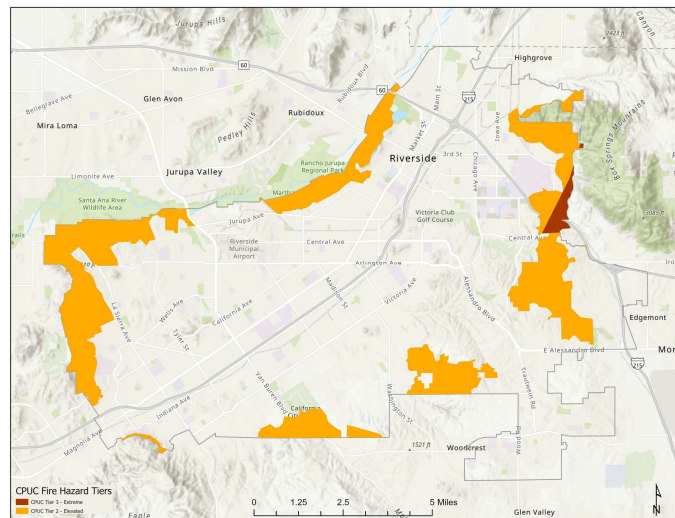
3

RiversideCA.gov

3

## HIGH FIRE THREAT DISTRICTS (HFTD)

1. Identified by State agencies and stakeholder including RPU and Riverside Fire
2. Fire Threat Districts
  - a. Tier 2: Areas with elevated wildfire risk
  - b. Tier 3: Areas with extreme wildfire risk (typically undeveloped natural lands)



4

RiversideCA.gov

4

## RPU INFRASTRUCTURE IN HFTD

	Total	Tier 2		Tier 3 OH	
	Circuit-Miles	Circuit-Miles	%	Circuit-Miles	%
Overhead Distribution	512.6	38.3	7.5%	3.5	0.7%
Overhead Transmission*	99.3	11.1	11.2%	0.4	0.4%
<b>Total Overhead Circuit-Miles</b>	<b>611.9</b>	<b>49.4</b>	<b>8.1%</b>	<b>3.9</b>	<b>0.6%</b>

\*Note: Southern California Edison owns and operates seven sub-transmission lines extending from SCE's Vista Substation. These lines comprise 22 miles of overhead transmission that feed into RPU and are not included in the table. RPU takes ownership of these lines at the boundary of its service territory. Lines in RPU territory are included in the overhead sub-transmission of the table.



5

RiversideCA.gov

5

## PREVENTATIVE STRATEGIES

Design & Construction Standards	Inspections & Maintenance	Operational Policies	Situational Awareness
<ul style="list-style-type: none"> <li>Materials Used</li> <li>Equipment Standards</li> </ul>	<ul style="list-style-type: none"> <li>Vegetation Management</li> <li>Equipment Inspection</li> </ul>	<ul style="list-style-type: none"> <li>Reclosing</li> <li>De-Energization</li> </ul>	<ul style="list-style-type: none"> <li>Weather Monitoring</li> <li>Cameras</li> </ul>



6

RiversideCA.gov

6

## 2024 PERFORMANCE

1. RPU had no reportable wildfire incidents in 2024
2. System and Operational Improvements
  - a. Continued to update older substation automation equipment
  - b. Installed new weather station and integrated data with existing stations to provide real-time weather information to system operators
  - c. Developed new inspection plan
3. Continued close collaboration with the Riverside Fire Department



7

RiversideCA.gov

7

## NEXT STEPS

1. Submit the 2025 WMP to the Wildfire Safety Advisory Board upon approval from City Council
2. Continue to track, improve, and refine preventative strategies and metrics
3. Update the plan for 2026, as applicable





8

RiversideCA.gov


8


# STRATEGIC PLAN ALIGNMENT


 **Strategic Priority 4 - Environmental Stewardship**


 **Strategic Priority 6 - Infrastructure, Mobility and Connectivity**


## Cross-Cutting Threads


 Community Trust

 Equity

 Fiscal Responsibility

 Innovation

 Sustainability & Resiliency




9

RiversideCA.gov

9

# RECOMMENDATION

That the City Council approve the Riverside Public Utilities 2025 Wildfire Mitigation Plan for submittal to the Wildfire Safety Advisory Board in accordance with California Public Utilities Code Section 8387.



10

RiversideCA.gov

10

5