



STONE : NATURAL STONE



STONE : CAST STONE



EIFS / STUCCO



EIFS / STUCCO

**DUDEK**

SOURCE: Perkins + Will (August 2013)

**FIGURE 8-1**

**Acceptable Building Exterior Materials and Finishes**

7824

RIVERSIDE COMMUNITY HOSPITAL SPECIFIC PLAN

Z:\Projects\7824\1\WPD\00\Map\SS\Specific Plan\Figures\1 Acceptable BMFs.dwg

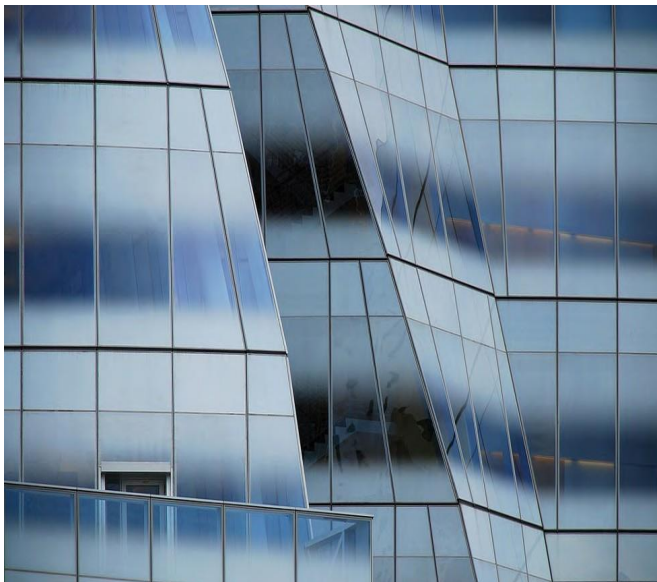
INTENTIONALLY LEFT BLANK



METAL PANELS



METAL PANELS



GLAZING





INTENTIONALLY LEFT BLANK





LOUVERS/ SUN SHADES/ CANOPIES



MASONRY

**DUDEK**

SOURCE: Perkins + Will (August 2013)

**FIGURE 8-3**  
**Acceptable Building Exterior Materials and Finishes**

7824

RIVERSIDE COMMUNITY HOSPITAL SPECIFIC PLAN

INTENTIONALLY LEFT BLANK



CONCRETE - SMOOTH



CAST STONE ( SMOOTH)



CONCRETE - TEXTURE/ PRECAST





INTENTIONALLY LEFT BLANK





VINYL SIDING



MASONITE / HARDIE BOARD

**DUDEK**

SOURCE: Perkins + Will (August 2013)

**FIGURE 8-5**

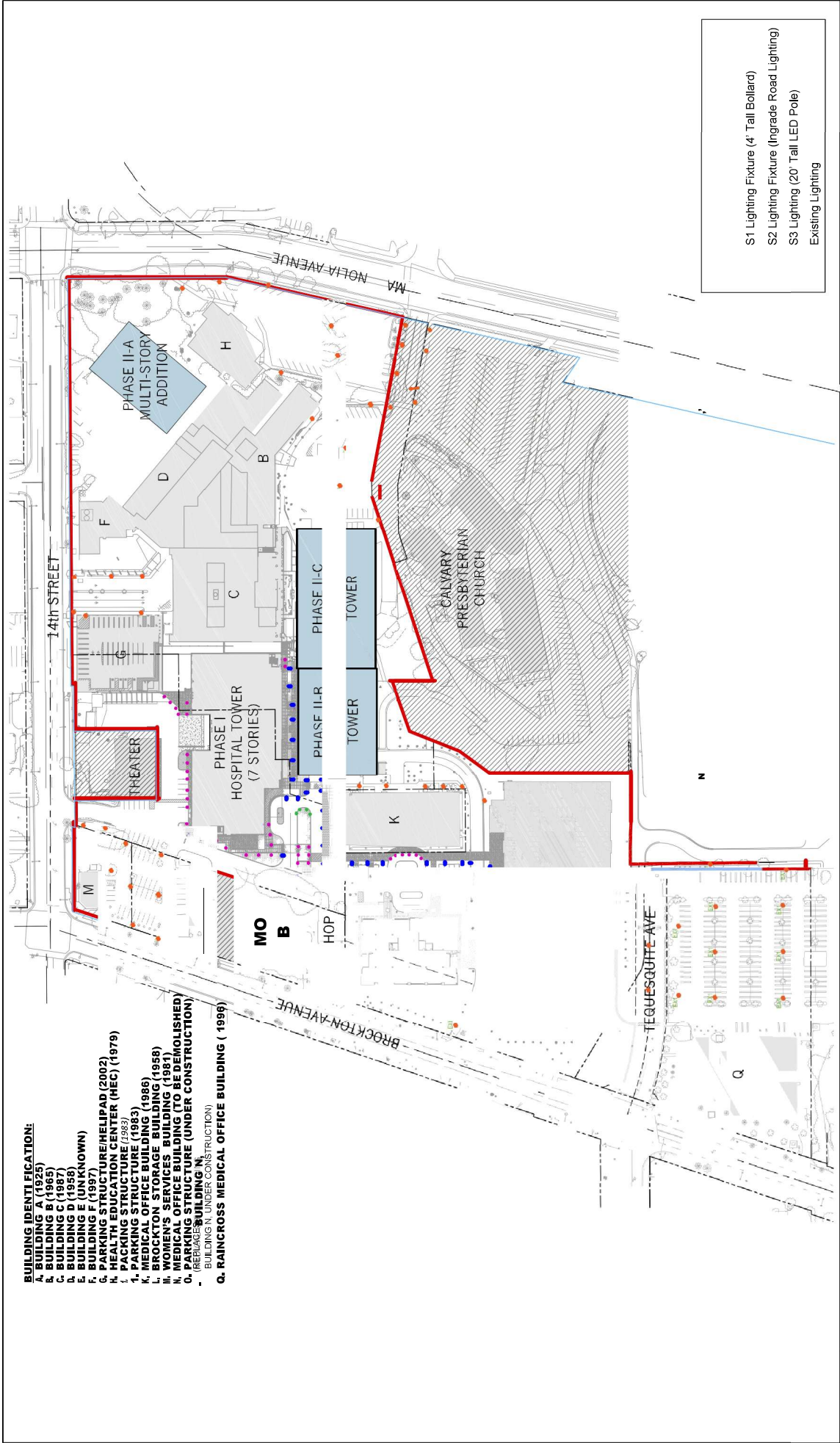
**Unacceptable Building Exterior Materials and Finishes**

7824

RIVERSIDE COMMUNITY HOSPITAL SPECIFIC PLAN



INTENTIONALLY LEFT BLANK



- BUILDING IDENTIFICATION:**
- A. BUILDING A (1925)
  - B. BUILDING B (1965)
  - C. BUILDING C (1987)
  - D. BUILDING D (1958)
  - E. BUILDING E (UNKNOWN)
  - F. BUILDING F (1981)
  - G. PARKING STRUCTURE/HELIPAD (2002)
  - H. HEALTH EDUCATION CENTER (HEC) (1979)
  - I. PARKING STRUCTURE (1983)
  - J. MEDICAL OFFICE BUILDING (1986)
  - K. BROCKTON STORAGE BUILDING (1958)
  - L. WOMEN'S SERVICES BUILDING (1981)
  - M. MEDICAL OFFICE BUILDING (TO BE DEMOLISHED)
  - N. REPAIRS UNDER CONSTRUCTION
  - O. RAINCROSS MEDICAL OFFICE BUILDING (1996)

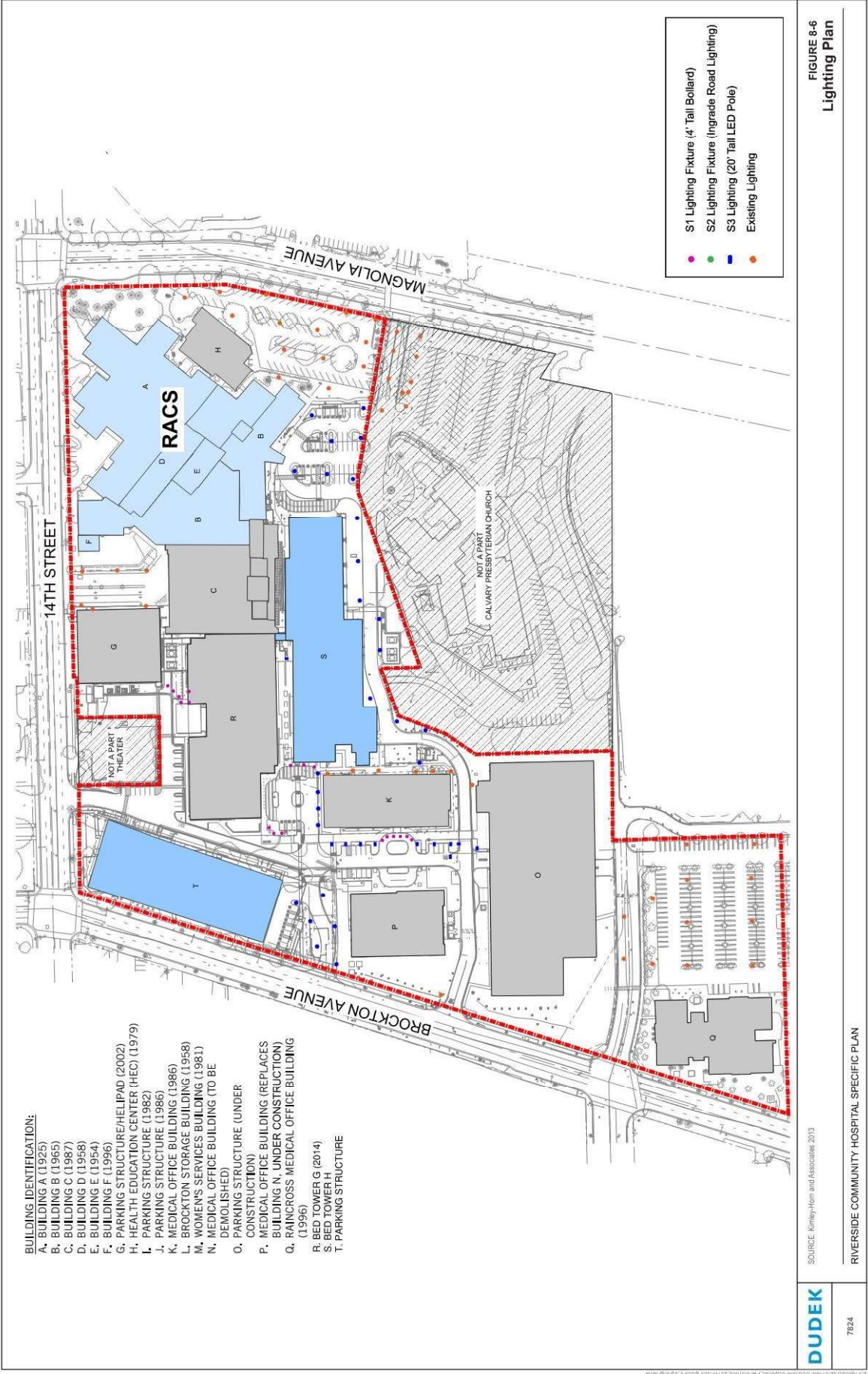
**DUDEK**

REVISE PROPERTY BOUNDARY TO INCLUDE MOB AND AUTOSHOP PROPERTIES. REVISE LEGEND TO INCL. R.S.T. NEW PARKING GARAGE ADDED. NEW FIRE LANE SHOWN. SEE NEXT PAGE FOR REVISED EXHIBIT.

FIGURE 8-6  
Lighting Plan

RIV  
ER  
SID  
E  
CO  
MM  
UNI  
TY  
HO  
SPI  
TAL  
SP  
ECI  
FIC  
PLA  
N







INTENTIONALLY LEFT BLANK