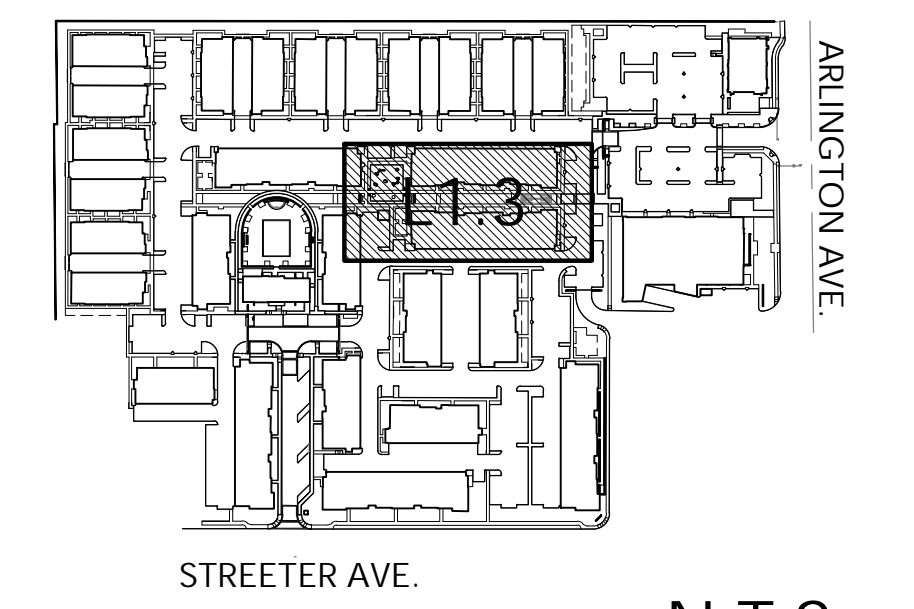


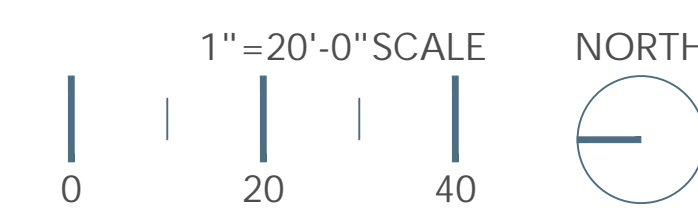
**REFERENCE NOTES SCHEDULE**

SYMBOL	DESCRIPTION
21	PLAY SPACE
22	PLAY SPACE FENCE AND GATE
23	OUTDOOR SEATING
24	OUTDOOR LOUNGE
25	OUTDOOR COVERED DINNING
26	BENCH
27	ENHANCED PEDESTRIAN PATH
28	ENHANCED CROSSWALK

**KEY MAP**



N.T.S.



LANDSCAPE ENLARGEMENT MULT-USE SPACE

**L1.3**

**ARLINGTON MIXED USE**  
FOULGER PRATT

RIVERSIDE, CA

DATE: 03-13-2024  
JOB NO.: 2020-055

**ARCHITECTS ORANGE**  
144 NORTH ORANGE ST., ORANGE, CA 92866  
(714) 639-9860



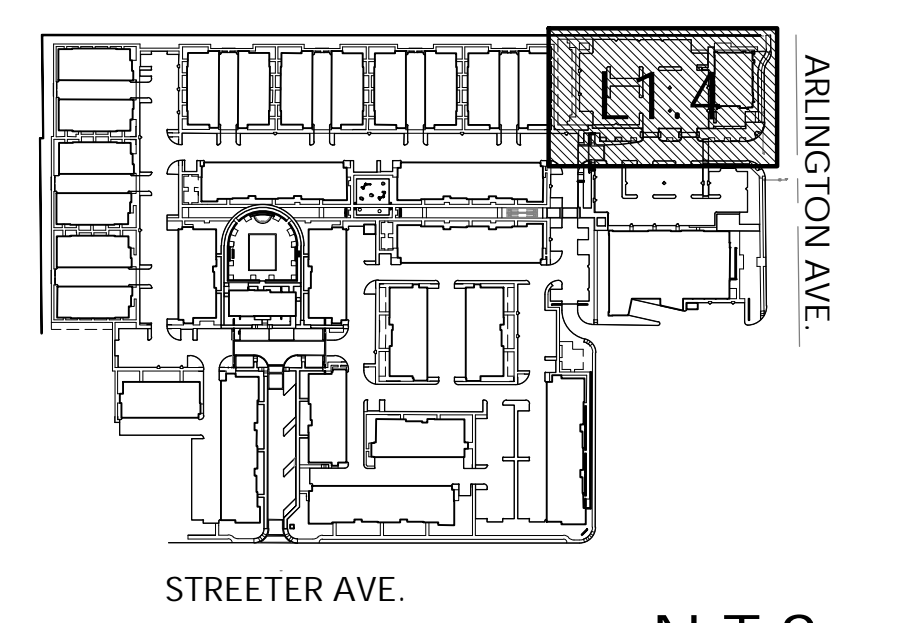




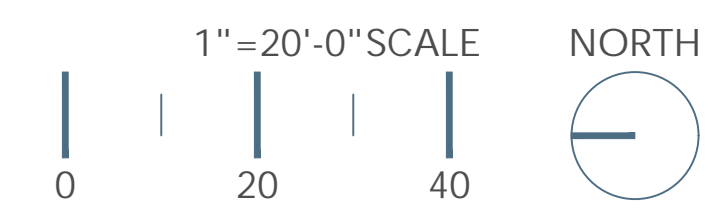
**REFERENCE NOTES SCHEDULE**

SYMBOL	DESCRIPTION
29	DOG PARK FENCE AND GATE
30	PUBLIC DOG PARK
31	"PORTAL" ENTRY STRUCTURES
32	ENHANCED PEDESTRIAN PATH
33	ENHANCED CROSSWALK
34	TREE GRATES
35	RETAIL PLAZA OUTDOOR SEATING
36	PUBLIC ART PIECE
37	PERIMETER FENCE AND GATE
38	VEHICULAR ENTRY GATE
39	PARKING LOT PLANTER ISLANDS
40	BIKE RACKS

**KEY MAP**



N.T.S.



LANDSCAPE ENLARGEMENT RETAIL & DOG PARK

**L1.4**

**ARLINGTON MIXED USE**  
FOULGER PRATT

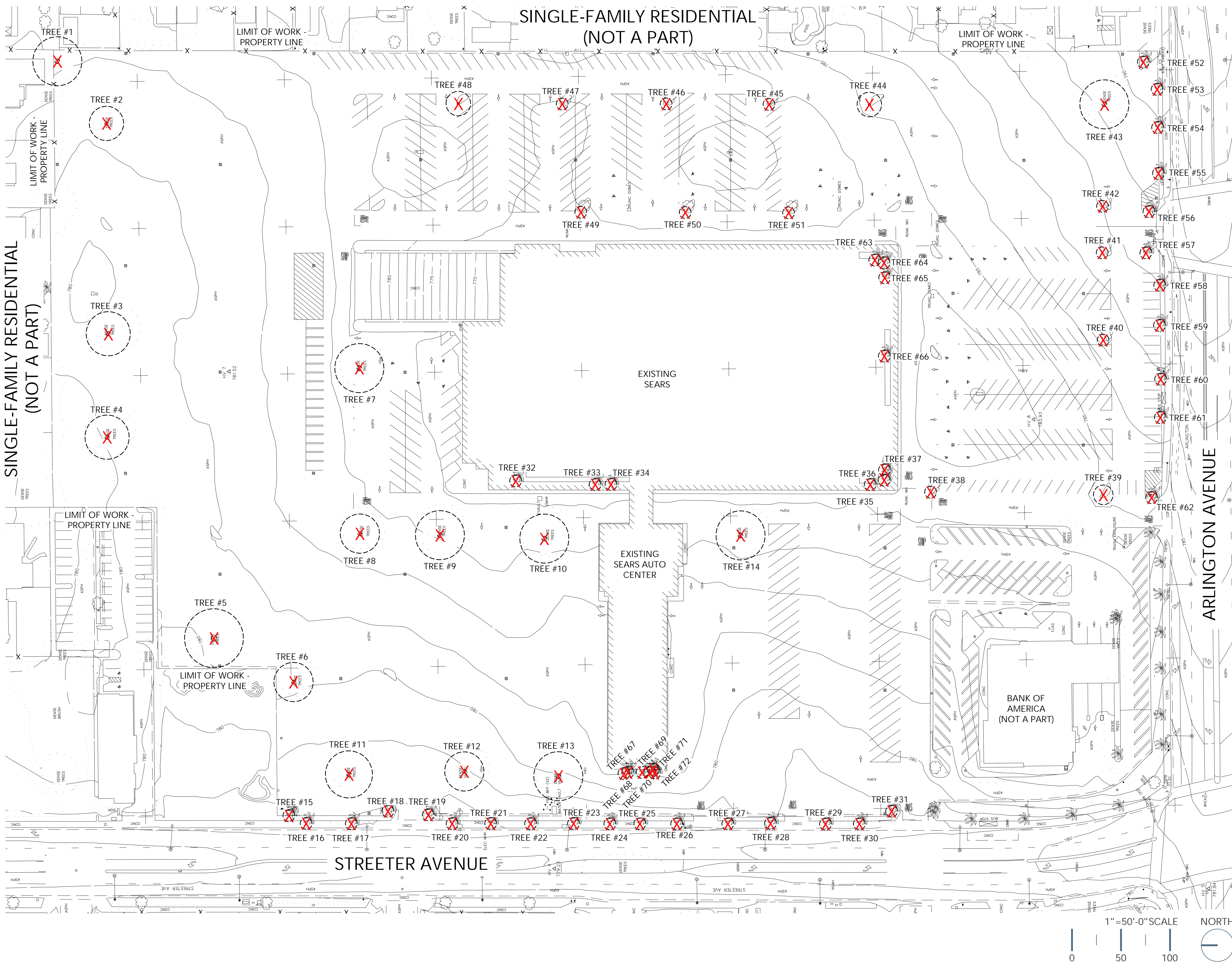
RIVERSIDE, CA

DATE: 03-13-2024  
JOB NO.: 2020-055

**ARCHITECTS ORANGE**  
144 NORTH ORANGE ST., ORANGE, CA 92866  
(714) 639-9860







**EXISTING TREE LEGEND**

NO.	BOTANICAL NAME	COMMON NAME	CONDITION	RECOMMENDATION	REASON
1	Pinus canariensis	Canary Island Pine	GOOD	REMOVE	IN CONFLICT
2	Pinus canariensis	Canary Island Pine	GOOD	REMOVE	IN CONFLICT
3	Pinus canariensis	Canary Island Pine	GOOD	REMOVE	IN CONFLICT
4	Pinus canariensis	Canary Island Pine	GOOD	REMOVE	IN CONFLICT
5	Pinus canariensis	Canary Island Pine	GOOD	REMOVE	IN CONFLICT
6	Pinus canariensis	Canary Island Pine	GOOD	REMOVE	IN CONFLICT
7	Quercus virginiana	Southern Live Oak	GOOD	REMOVE	IN CONFLICT
8	Quercus virginiana	Southern Live Oak	GOOD	REMOVE	IN CONFLICT
9	Quercus virginiana	Southern Live Oak	GOOD	REMOVE	IN CONFLICT
10	Quercus virginiana	Southern Live Oak	GOOD	REMOVE	IN CONFLICT
11	Quercus virginiana	Southern Live Oak	GOOD	REMOVE	IN CONFLICT
12	Quercus virginiana	Southern Live Oak	GOOD	REMOVE	IN CONFLICT
13	Quercus virginiana	Southern Live Oak	GOOD	REMOVE	IN CONFLICT
14	Quercus virginiana	Southern Live Oak	GOOD	REMOVE	IN CONFLICT
15	Washingtonia robusta	Mexican Fan Palm	POOR	REMOVE	CONDITION
16	Washingtonia robusta	Mexican Fan Palm	GOOD	REMOVE	IN CONFLICT
17	Washingtonia robusta	Mexican Fan Palm	GOOD	REMOVE	IN CONFLICT
18	Washingtonia robusta	Mexican Fan Palm	GOOD	REMOVE	IN CONFLICT
19	Washingtonia robusta	Mexican Fan Palm	GOOD	REMOVE	IN CONFLICT
20	Washingtonia robusta	Mexican Fan Palm	GOOD	REMOVE	IN CONFLICT
21	Washingtonia robusta	Mexican Fan Palm	GOOD	REMOVE	IN CONFLICT
22	Washingtonia robusta	Mexican Fan Palm	GOOD	REMOVE	IN CONFLICT
23	Washingtonia robusta	Mexican Fan Palm	GOOD	REMOVE	IN CONFLICT
24	Washingtonia robusta	Mexican Fan Palm	GOOD	REMOVE	IN CONFLICT
25	Washingtonia robusta	Mexican Fan Palm	GOOD	REMOVE	IN CONFLICT
26	Washingtonia robusta	Mexican Fan Palm	GOOD	REMOVE	IN CONFLICT
27	Washingtonia robusta	Mexican Fan Palm	GOOD	REMOVE	IN CONFLICT
28	Washingtonia robusta	Mexican Fan Palm	GOOD	REMOVE	IN CONFLICT
29	Washingtonia robusta	Mexican Fan Palm	GOOD	REMOVE	IN CONFLICT
30	Washingtonia robusta	Mexican Fan Palm	GOOD	REMOVE	IN CONFLICT
31	Washingtonia robusta	Mexican Fan Palm	GOOD	REMOVE	IN CONFLICT
32	Washingtonia robusta	Mexican Fan Palm	GOOD	REMOVE	IN CONFLICT
33	Washingtonia robusta	Mexican Fan Palm	GOOD	REMOVE	IN CONFLICT
34	Washingtonia robusta	Mexican Fan Palm	GOOD	REMOVE	IN CONFLICT
35	Washingtonia robusta	Mexican Fan Palm	GOOD	REMOVE	IN CONFLICT
36	Washingtonia robusta	Mexican Fan Palm	GOOD	REMOVE	IN CONFLICT
37	Washingtonia robusta	Mexican Fan Palm	GOOD	REMOVE	IN CONFLICT
38	Sapum sebiferum	Chinese Tallow	FAIR	REMOVE	IN CONFLICT
39	Sapum sebiferum	Chinese Tallow	FAIR	REMOVE	IN CONFLICT
40	Sapum sebiferum	Chinese Tallow	FAIR	REMOVE	IN CONFLICT
41	Sapum sebiferum	Chinese Tallow	FAIR	REMOVE	IN CONFLICT
42	Sapum sebiferum	Chinese Tallow	FAIR	REMOVE	IN CONFLICT
43	Podocarpus gracilior	Fern Pine	GOOD	REMOVE	IN CONFLICT
44	Magnolia grandiflora	Southern Magnolia	POOR	REMOVE	IN CONFLICT
45	Magnolia grandiflora	Southern Magnolia	POOR	REMOVE	IN CONFLICT
46	Magnolia grandiflora	Southern Magnolia	POOR	REMOVE	IN CONFLICT
47	Magnolia grandiflora	Southern Magnolia	POOR	REMOVE	IN CONFLICT
48	Magnolia grandiflora	Southern Magnolia	POOR	REMOVE	IN CONFLICT
49	Magnolia grandiflora	Southern Magnolia	POOR	REMOVE	IN CONFLICT
50	Magnolia grandiflora	Southern Magnolia	POOR	REMOVE	IN CONFLICT
51	Magnolia grandiflora	Southern Magnolia	POOR	REMOVE	IN CONFLICT
52	Washingtonia robusta	Mexican Fan Palm	GOOD	REMOVE	IN CONFLICT
53	Washingtonia robusta	Mexican Fan Palm	GOOD	REMOVE	IN CONFLICT
54	Washingtonia robusta	Mexican Fan Palm	GOOD	REMOVE	IN CONFLICT
55	Washingtonia robusta	Mexican Fan Palm	GOOD	REMOVE	IN CONFLICT
56	Washingtonia robusta	Mexican Fan Palm	GOOD	REMOVE	IN CONFLICT
57	Washingtonia robusta	Mexican Fan Palm	GOOD	REMOVE	IN CONFLICT
58	Washingtonia robusta	Mexican Fan Palm	GOOD	REMOVE	IN CONFLICT
59	Washingtonia robusta	Mexican Fan Palm	GOOD	REMOVE	IN CONFLICT
60	Washingtonia robusta	Mexican Fan Palm	GOOD	REMOVE	IN CONFLICT
61	Washingtonia robusta	Mexican Fan Palm	GOOD	REMOVE	IN CONFLICT
62	Washingtonia robusta	Mexican Fan Palm	GOOD	REMOVE	IN CONFLICT
63	Washingtonia robusta	Mexican Fan Palm	GOOD	REMOVE	IN CONFLICT
64	Washingtonia robusta	Mexican Fan Palm	GOOD	REMOVE	IN CONFLICT
65	Washingtonia robusta	Mexican Fan Palm	GOOD	REMOVE	IN CONFLICT
66	Washingtonia robusta	Mexican Fan Palm	GOOD	REMOVE	IN CONFLICT
67	Washingtonia robusta	Mexican Fan Palm	GOOD	REMOVE	IN CONFLICT
68	Washingtonia robusta	Mexican Fan Palm	GOOD	REMOVE	IN CONFLICT
69	Washingtonia robusta	Mexican Fan Palm	GOOD	REMOVE	IN CONFLICT
70	Washingtonia robusta	Mexican Fan Palm	GOOD	REMOVE	IN CONFLICT
71	Washingtonia robusta	Mexican Fan Palm	GOOD	REMOVE	IN CONFLICT
72	Washingtonia robusta	Mexican Fan Palm	GOOD	REMOVE	IN CONFLICT

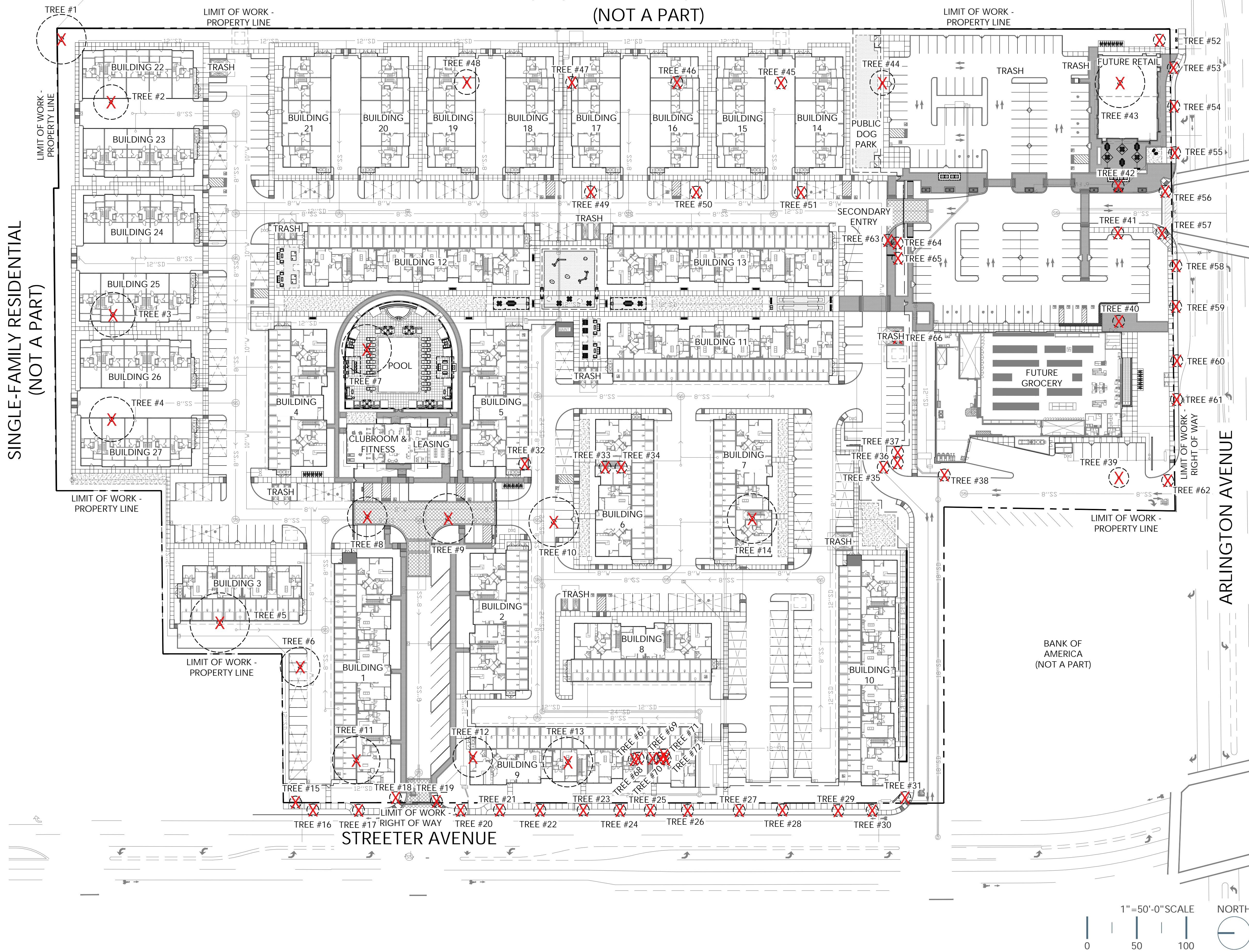
EXISTING TREE PLAN (EXISTING SITE)

L2.0





SINGLE-FAMILY RESIDENTIAL  
(NOT A PART)



EXISTING TREE LEGEND

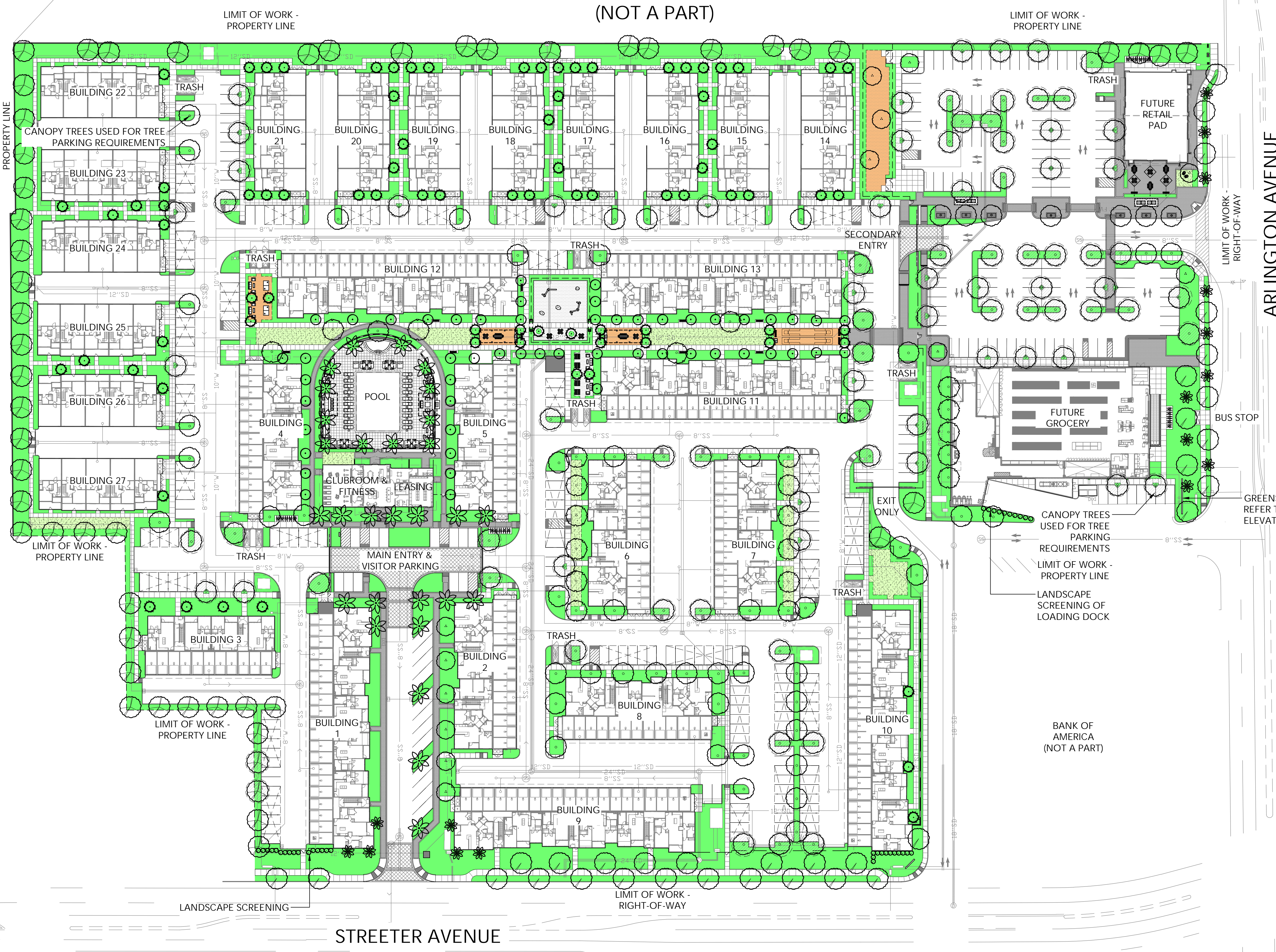
NO.	BOTANICAL NAME	COMMON NAME	CONDITION	RECOMMENDATION	REASON
1	PINUS CANARIENSIS	CANARY ISLAND PINE	GOOD	REMOVE	IN CONFLICT
2	PINUS CANARIENSIS	CANARY ISLAND PINE	GOOD	REMOVE	IN CONFLICT
3	PINUS CANARIENSIS	CANARY ISLAND PINE	GOOD	REMOVE	IN CONFLICT
4	PINUS CANARIENSIS	CANARY ISLAND PINE	GOOD	REMOVE	IN CONFLICT
5	PINUS CANARIENSIS	CANARY ISLAND PINE	GOOD	REMOVE	IN CONFLICT
6	PINUS CANARIENSIS	CANARY ISLAND PINE	GOOD	REMOVE	IN CONFLICT
7	QUERCUS VIRGINIANA	SOUTHERN LIVE OAK	GOOD	REMOVE	IN CONFLICT
8	QUERCUS VIRGINIANA	SOUTHERN LIVE OAK	GOOD	REMOVE	IN CONFLICT
9	QUERCUS VIRGINIANA	SOUTHERN LIVE OAK	GOOD	REMOVE	IN CONFLICT
10	QUERCUS VIRGINIANA	SOUTHERN LIVE OAK	GOOD	REMOVE	IN CONFLICT
11	QUERCUS VIRGINIANA	SOUTHERN LIVE OAK	GOOD	REMOVE	IN CONFLICT
12	QUERCUS VIRGINIANA	SOUTHERN LIVE OAK	GOOD	REMOVE	IN CONFLICT
13	QUERCUS VIRGINIANA	SOUTHERN LIVE OAK	GOOD	REMOVE	IN CONFLICT
14	QUERCUS VIRGINIANA	SOUTHERN LIVE OAK	GOOD	REMOVE	IN CONFLICT
15	WASHINGTONIA ROBUSTA	MEXICAN FAN PALM	POOR	REMOVE	CONDITION
16	WASHINGTONIA ROBUSTA	MEXICAN FAN PALM	GOOD	REMOVE	IN CONFLICT
17	WASHINGTONIA ROBUSTA	MEXICAN FAN PALM	GOOD	REMOVE	IN CONFLICT
18	WASHINGTONIA ROBUSTA	MEXICAN FAN PALM	GOOD	REMOVE	IN CONFLICT
19	WASHINGTONIA ROBUSTA	MEXICAN FAN PALM	GOOD	REMOVE	IN CONFLICT
20	WASHINGTONIA ROBUSTA	MEXICAN FAN PALM	GOOD	REMOVE	IN CONFLICT
21	WASHINGTONIA ROBUSTA	MEXICAN FAN PALM	GOOD	REMOVE	IN CONFLICT
22	WASHINGTONIA ROBUSTA	MEXICAN FAN PALM	GOOD	REMOVE	IN CONFLICT
23	WASHINGTONIA ROBUSTA	MEXICAN FAN PALM	GOOD	REMOVE	IN CONFLICT
24	WASHINGTONIA ROBUSTA	MEXICAN FAN PALM	GOOD	REMOVE	IN CONFLICT
25	WASHINGTONIA ROBUSTA	MEXICAN FAN PALM	GOOD	REMOVE	IN CONFLICT
26	WASHINGTONIA ROBUSTA	MEXICAN FAN PALM	GOOD	REMOVE	IN CONFLICT
27	WASHINGTONIA ROBUSTA	MEXICAN FAN PALM	GOOD	REMOVE	IN CONFLICT
28	WASHINGTONIA ROBUSTA	MEXICAN FAN PALM	GOOD	REMOVE	IN CONFLICT
29	WASHINGTONIA ROBUSTA	MEXICAN FAN PALM	GOOD	REMOVE	IN CONFLICT
30	WASHINGTONIA ROBUSTA	MEXICAN FAN PALM	GOOD	REMOVE	IN CONFLICT
31	WASHINGTONIA ROBUSTA	MEXICAN FAN PALM	GOOD	REMOVE	IN CONFLICT
32	WASHINGTONIA ROBUSTA	MEXICAN FAN PALM	GOOD	REMOVE	IN CONFLICT
33	WASHINGTONIA ROBUSTA	MEXICAN FAN PALM	GOOD	REMOVE	IN CONFLICT
34	WASHINGTONIA ROBUSTA	MEXICAN FAN PALM	GOOD	REMOVE	IN CONFLICT
35	WASHINGTONIA ROBUSTA	MEXICAN FAN PALM	GOOD	REMOVE	IN CONFLICT
36	WASHINGTONIA ROBUSTA	MEXICAN FAN PALM	GOOD	REMOVE	IN CONFLICT
37	WASHINGTONIA ROBUSTA	MEXICAN FAN PALM	GOOD	REMOVE	IN CONFLICT
38	SAPRUM SEBIFERUM	CHINESE TALLOW	FAIR	REMOVE	IN CONFLICT
39	SAPRUM SEBIFERUM	CHINESE TALLOW	FAIR	REMOVE	IN CONFLICT
40	SAPRUM SEBIFERUM	CHINESE TALLOW	FAIR	REMOVE	IN CONFLICT
41	SAPRUM SEBIFERUM	CHINESE TALLOW	FAIR	REMOVE	IN CONFLICT
42	SAPRUM SEBIFERUM	CHINESE TALLOW	FAIR	REMOVE	IN CONFLICT
43	PODOCARPUS GRACILIOR	FERN PINE	GOOD	REMOVE	IN CONFLICT
44	MAGNOLIA GRANDIFLORA	SOUTHERN MAGNOLIA	POOR	REMOVE	IN CONFLICT
45	MAGNOLIA GRANDIFLORA	SOUTHERN MAGNOLIA	POOR	REMOVE	IN CONFLICT
46	MAGNOLIA GRANDIFLORA	SOUTHERN MAGNOLIA	POOR	REMOVE	IN CONFLICT
47	MAGNOLIA GRANDIFLORA	SOUTHERN MAGNOLIA	POOR	REMOVE	IN CONFLICT
48	MAGNOLIA GRANDIFLORA	SOUTHERN MAGNOLIA	POOR	REMOVE	IN CONFLICT
49	MAGNOLIA GRANDIFLORA	SOUTHERN MAGNOLIA	POOR	REMOVE	IN CONFLICT
50	MAGNOLIA GRANDIFLORA	SOUTHERN MAGNOLIA	POOR	REMOVE	IN CONFLICT
51	MAGNOLIA GRANDIFLORA	SOUTHERN MAGNOLIA	POOR	REMOVE	IN CONFLICT
52	WASHINGTONIA ROBUSTA	MEXICAN FAN PALM	GOOD	REMOVE	IN CONFLICT
53	WASHINGTONIA ROBUSTA	MEXICAN FAN PALM	GOOD	REMOVE	IN CONFLICT
54	WASHINGTONIA ROBUSTA	MEXICAN FAN PALM	GOOD	REMOVE	IN CONFLICT
55	WASHINGTONIA ROBUSTA	MEXICAN FAN PALM	GOOD	REMOVE	IN CONFLICT
56	WASHINGTONIA ROBUSTA	MEXICAN FAN PALM	GOOD	REMOVE	IN CONFLICT
57	WASHINGTONIA ROBUSTA	MEXICAN FAN PALM	GOOD	REMOVE	IN CONFLICT
58	WASHINGTONIA ROBUSTA	MEXICAN FAN PALM	GOOD	REMOVE	IN CONFLICT
59	WASHINGTONIA ROBUSTA	MEXICAN FAN PALM	GOOD	REMOVE	IN CONFLICT
60	WASHINGTONIA ROBUSTA	MEXICAN FAN PALM	GOOD	REMOVE	IN CONFLICT
61	WASHINGTONIA ROBUSTA	MEXICAN FAN PALM	GOOD	REMOVE	IN CONFLICT
62	WASHINGTONIA ROBUSTA	MEXICAN FAN PALM	GOOD	REMOVE	IN CONFLICT
63	WASHINGTONIA ROBUSTA	MEXICAN FAN PALM	GOOD	REMOVE	IN CONFLICT
64	WASHINGTONIA ROBUSTA	MEXICAN FAN PALM	GOOD	REMOVE	IN CONFLICT
65	WASHINGTONIA ROBUSTA	MEXICAN FAN PALM	GOOD	REMOVE	IN CONFLICT
66	WASHINGTONIA ROBUSTA	MEXICAN FAN PALM	GOOD	REMOVE	IN CONFLICT
67	WASHINGTONIA ROBUSTA	MEXICAN FAN PALM	GOOD	REMOVE	IN CONFLICT
68	WASHINGTONIA ROBUSTA	MEXICAN FAN PALM	GOOD	REMOVE	IN CONFLICT
69	WASHINGTONIA ROBUSTA	MEXICAN FAN PALM	GOOD	REMOVE	IN CONFLICT
70	WASHINGTONIA ROBUSTA	MEXICAN FAN PALM	GOOD	REMOVE	IN CONFLICT
71	WASHINGTONIA ROBUSTA	MEXICAN FAN PALM	GOOD	REMOVE	IN CONFLICT
72	WASHINGTONIA ROBUSTA	MEXICAN FAN PALM	GOOD	REMOVE	IN CONFLICT





SINGLE-FAMILY RESIDENTIAL  
(NOT A PART)

SINGLE-FAMILY RESIDENTIAL  
(NOT A PART)



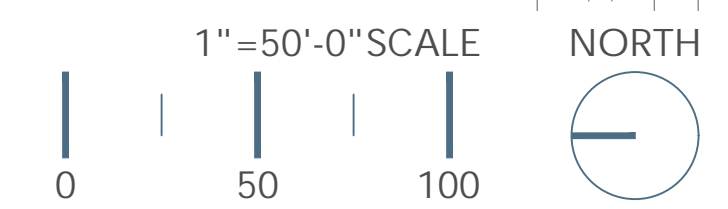
LANDSCAPE ZONES AND PLANT PALETTE

SYMBOL	BOTANICAL NAME	COMMON NAME	WUCOLS
<b>ENTRY AND PERIMETER PALM SUCH AS:</b>			
	ARCHONTOPHOENIX ALEXANDRE	KING PALM	M
	BISMARCKIA NOBILIS	BISMARCK PALM	L
	HOWEA FORSTERIANA	KENTIA PALM	L
	PHOENIX DACTYLIFERA	DATE PALM	L
<b>ENTRY SPECIMEN TREE SUCH AS:</b>			
	ARBUTUS X 'MARINA'	MARINA STRAWBERRY TREE	M
	CASSIA LEPTOPHYLLA	GOLD MEDALLION TREE	M
	CERCIDIA PARKINSONIA HYBRID	MURDERERS ROW	L
	OLEA EUROPAEA	EUROPEAN OLIVE	L
	QUERCUS VIRGINIANA	SOUTHERN LIVE OAK	M
<b>LOOP ROAD AND PARKING CANOPY TREE SUCH AS:</b>			
	CUPANOPSIS ANACARDIODES	CARROT WOOD	M
	GELERA PARVIFLORA	AUSTRALIAN WILLOW	M
	PODOCARPUS GRACILIS	PODOCARPUS	M
	PROSOPIS GLANDULOSA	CHILEAN MESQUITE	L
	RHUS LANCEA	AFRICAN SUMAC	L
	ULMUS PARVIFOLIA	CHINESE ELM 'TRUE GREEN'	L
<b>LARGE ACCENT TREE SUCH AS:</b>			
	CHITALPA TASHKENTENSIS	CHITALPA	L
	JACARANDA MIMOSIFOLIA	JACARANDA	L
	QUERCUS AGROBOLIA	COAST LIVE OAK	L
	TIJUNIA TIJU	TIJU	M
<b>PERIMETER SCREENING TREE SUCH AS:</b>			
	CASSIA LEPTOPHYLLA	GOLD MEDALLION TREE	M
	PINUS HALPENSIS	ALEPPO PINE	L
<b>SMALL ACCENT TREE SUCH AS:</b>			
	ARBUTUS X 'MARINA'	MARINA STRAWBERRY TREE	M
	BAUHINIA X BLAKEANA	HONG KONG ORCHID TREE	M
	CHILIEDENDRON	DESERT WILLOW	M
	MAGNOLIA GRANDIFLORA 'LITTLE GEM'	MAGNOLIA 'LITTLE GEM'	M
	LAGERSTROEMIA INDICA	GRAPE MYRTLE	M
<b>VERTICAL ACCENT TREE SUCH AS:</b>			
	FICUS NITIDA	INDIAN LAUREL COLUMN	M
	PODOCARPUS ELONGATUS 'ICEE BLUE'	'ICEE BLUE' PODOCARPUS	M
	PRUNUS CERCIDIANA 'COMPACTA'	CAROLINA CHERRY	M
	STRELTZIA NICOLAI	GIANT BIRD OF PARADISE	M
	TRISTANIA CONFERTA	BRISBANE BOX	M
<b>SHRUBS SUCH AS:</b>			
	ALOE X SPECIES	ALOE	L
	AGAVE SPECIES	AGAVE	L
	ARBUTUS UNEDO 'COMPACTA'	DWARF STRAWBERRY TREE	L
	ASPARAGUS DENSIFLORUS 'MYERS'	FOXTAIL FERN	M
	BOUGAINVILLEA 'LA JOLLA'	'LA JOLLA' BOUGAINVILLEA	M
	CALLISTEMON VIMINALIS 'LITTLE JOHN'	WEeping BOTTLEBRUSH	M
	CAREX X SPECIES	SEDGE	L
	CARSSA MACROCARPA 'TUTTLE'	'TUTTLE' DWARF NATAL PLUM	M
	CHONDROPETALUM 'TECTORUM' 'EL CAMPO'	'EL CAMPO' SMALL CAPE RUSH	M
	CORYLYNE X SPECIES	CORYLYNE	M
	DASYLIRION SPECIES	DESERT SPOON	L
	DIANELLA TASMANICA 'VARIEGATA'	VARIEGATED FLAX LILY	M
	DIETES GRANDIFLORA	FORTNIGHT LILY	M
	JUNCUS PATENS	CALIFORNIA GRAY RUSH	L
	LEUCADENDRON X 'SAFARI SUNSHINE'	CONEBUSH	M
	LIQUIDUM JAPONICUM 'TEXANUM'	WAX LEAF PRIVET	M
	LOMANDRA X SPECIES	MAT RUSH	M
	PELLEANTHUS MACROCARPUS	SLIPPER	VL
	PENNETUM MESSAUCUM 'RED BUNNY TAIL'	FOUNTAIN GRASS	L
	PHILODENDRON XANADU	XANADU PHILODENDRON	M
	PHORMIUM 'DARK DELIGHT'	'DARK DELIGHT' PURPLE FLAX	M
	PITTOSPORA TORBIA 'VARIEGATA'	VARIEGATED MOCK ORANGE	M
	RHAPHIOLEPIS INDICA 'CLARA'	'CLARA' INDIAN HAWTHORN	M
	RHAPHIOLEPIS UMBELLATA 'MINOR'	YEDDO HAWTHORN	M
	SELERIA X GREVILLEI	'SELERIA' MOOR GRASS	M
	STRELTZIA REGINAE	BIRD OF PARADISE	M
	WESTRINGIA FRUTICOSA 'SMOKEY'	'SMOKEY' WESTRINGIA	L
<b>GROUNDCOVERS SUCH AS:</b>			
	BACCHARIS PILLULARIS 'PIGEON POINT'	DWARF COYOTE BRUSH	L
	CAREX PRAEGRACILIS	CALIFORNIA FIELD SEDGE	L
	COTONEASTER SPECIES	COTONEASTER	M
	FESTUCA GLAUCA 'TELLAH BLUE'	TELLAH BLUE FESCUE	M
	MYOPORIUM PARVIFOLIUM	PROSTRATE MYOPORIUM	L
	ROSMARINUS OFFICINALIS	HUNTINGTON CARPET	L
	'HUNTINGTON CARPET'	ROSEMARY	M
	ROSA SPECIES	CARPET ROSE	M
	TRADESCANTIA PALLIDA 'PURPLE HEART'	PURPLE QUEEN SPIDERWORT	M
<b>TURF SUCH AS:</b>			
	DWARF TALL FESCUE/FESTUCA ARUNDINACEA	MARATHON II SOD	H
	CYNODON DACTYLON	TIFGREEN	H
<b>PERMEABLE AREA SUCH AS:</b>			
	DECOMPOSED GRANITE		

NOTE  
PLANT SELECTION HAS BEEN DEVELOPED IN ACCORDANCE WITH THE RIVERSIDE COUNTY ALIC LANDSCAPING NEAR AIRPORTS GUIDELINES

TREE PARKING REQUIREMENTS

OPEN PARKING PROVIDED	281 SPACES (OPEN)
REQUIRED NUMBER OF TREES (1 TREE FOR EVERY 4 OPEN SPACES)	71 TREES
TOTAL TREES PROVIDED	87



ARLINGTON MIXED USE  
FOULGER PRATT

RIVERSIDE, CA

PLANTING PLAN L3.0

DATE: 03-13-2024  
JOB NO.: 2020-055

ARCHITECTS ORANGE  
144 NORTH ORANGE ST., ORANGE, CA 92866  
(714) 639-9860

