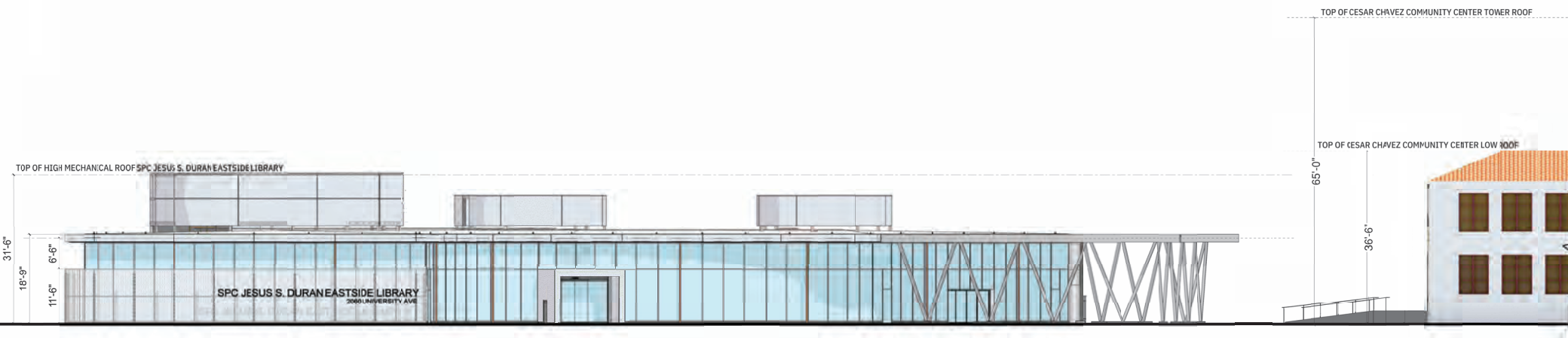


NORTH ELEVATION OF PROPOSED SPC JESUS S. DURAN EASTSIDE LIBRARY

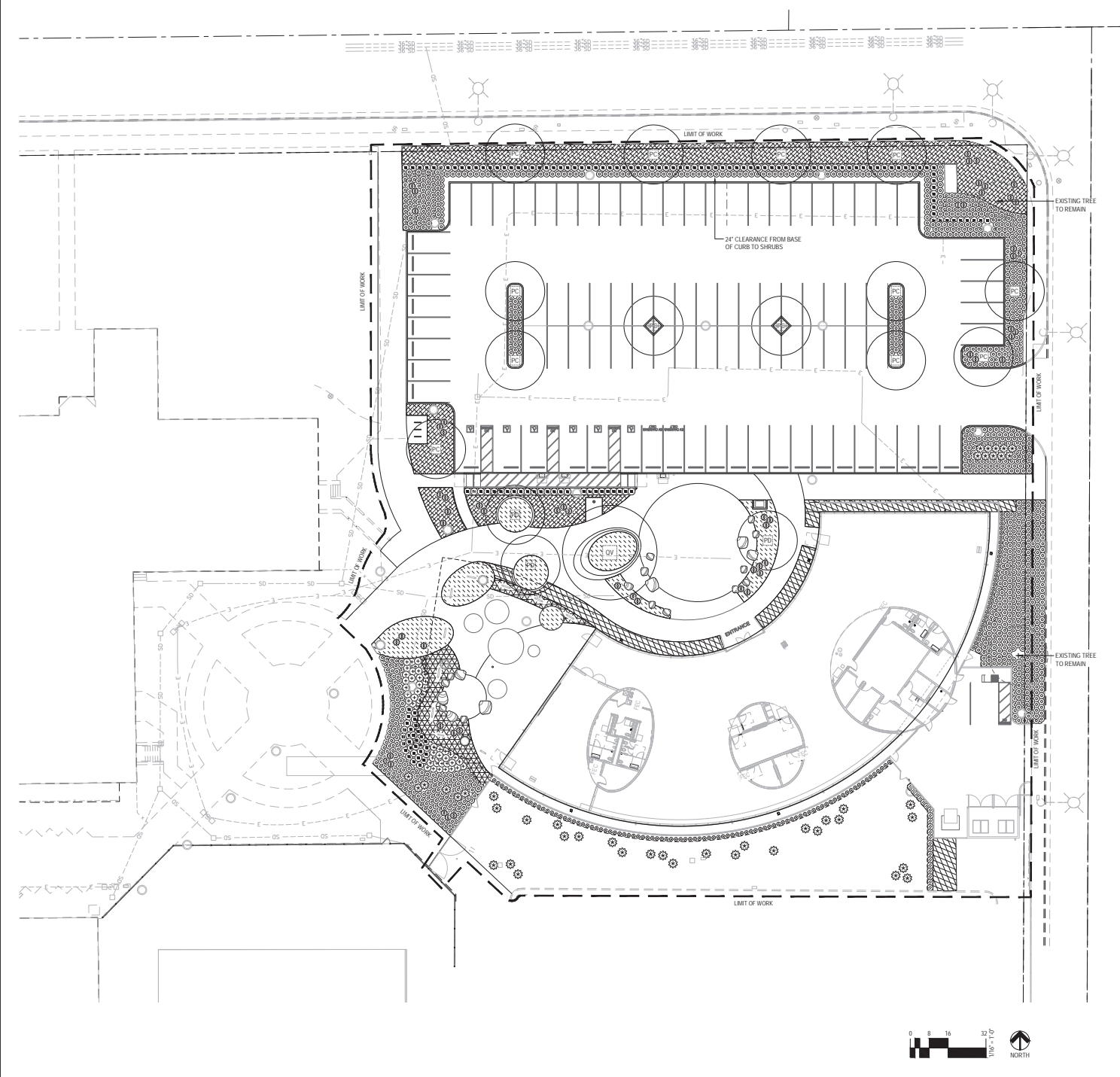
SCALE 1/16" = 1'-0"



NORTH ELEVATION OF PROPOSED SPC JESUS S. DURAN EASTSIDE LIBRARY

SCALE 1/8" = 1'-0"

SCALED NORTH ELEVATION - HEIGHT COMPARISON



PLANT SCHEDULE

CODE	BOTANICAL / COMMON NAME	SIZE
TREES		
PD	PARKINSONIA X DESERT MUSEUM / DESERT MUSEUM PALO VERDE	48" BOX
PC	PROSOPIA CHLORIS / CHILIFOLI MESQUITE	48" BOX
OV	QUERCUS VIRGINIANA / SOUTHERN LIVE OAK	72" BOX
SHRUBS		
AG	AGAVE ATTENUATA 'NOVA' / NOVA FOXTAIL AGAVE	15 GAL
CB	CARISSA MACROCARPA / BOXWOOD BEAUTY	5 GAL
DS	DAZYLION WHEELER / GREY DESERT SPOON	15 GAL
LO	LOPHOCEREUS MARGINATUS / FENCEPOST CACTUS	SEE REMARKS
MD	MYRTLEBERRY DUBIA / PINE MULHLY	1 GAL
OE	OLEA EUROPAEA 'MONTRA' / LITTLE OLIVE™ OLIVE	15 GAL
PT	PITOSPORUM 'TOBIRA' SHIRAZ / CREAM DE MINT™ JAPANESE PITOSPORUM	5 GAL
GROUND COVERS		
AL	ALOE BARBADENSIS / BARBADOS ALOE	5 GAL
CA	CAREX POKERGRASS / CALIFORNIA FIELD SEDGE	1 GAL
LO	LONANDRA X LIMNOCYTHUS / SHINY BLUE ZE BRAT BUSH	1 GAL
SE	SESLERIA AUTUMNALIS / AUTUMN MOOR GRASS	6" POT



City of Riverside
SPC Jesus S. Duran
Eastside Library



2875 Michale Dr. Suite 210
Irvine, CA 92606
P: 949.256.1500

797 J Street
San Diego, CA 92101
P: 619.388.0215
www.cannondesign.com

Armstrong & Brooks Consulting
Engineers, Inc.
Civil Engineer
1330 E. Colton Ave
Corona, CA 92881
951-372-8800

Ground Level Landscape
Architecture
Landscape Architect
2005 State Street, Suite B
San Diego, CA 92103
619-325-1990

Resonance Acoustics
Acoustics
615 E. Front Street
El Segundo, CA 90245
310-775-0260



100% CONSTRUCTION DOCUMENTS	01/16/2024
100% DESIGN DEVELOPMENT	01/15/2024
SCHEMATIC DESIGN	11/16/2023
Rev.	Description Date

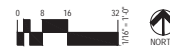


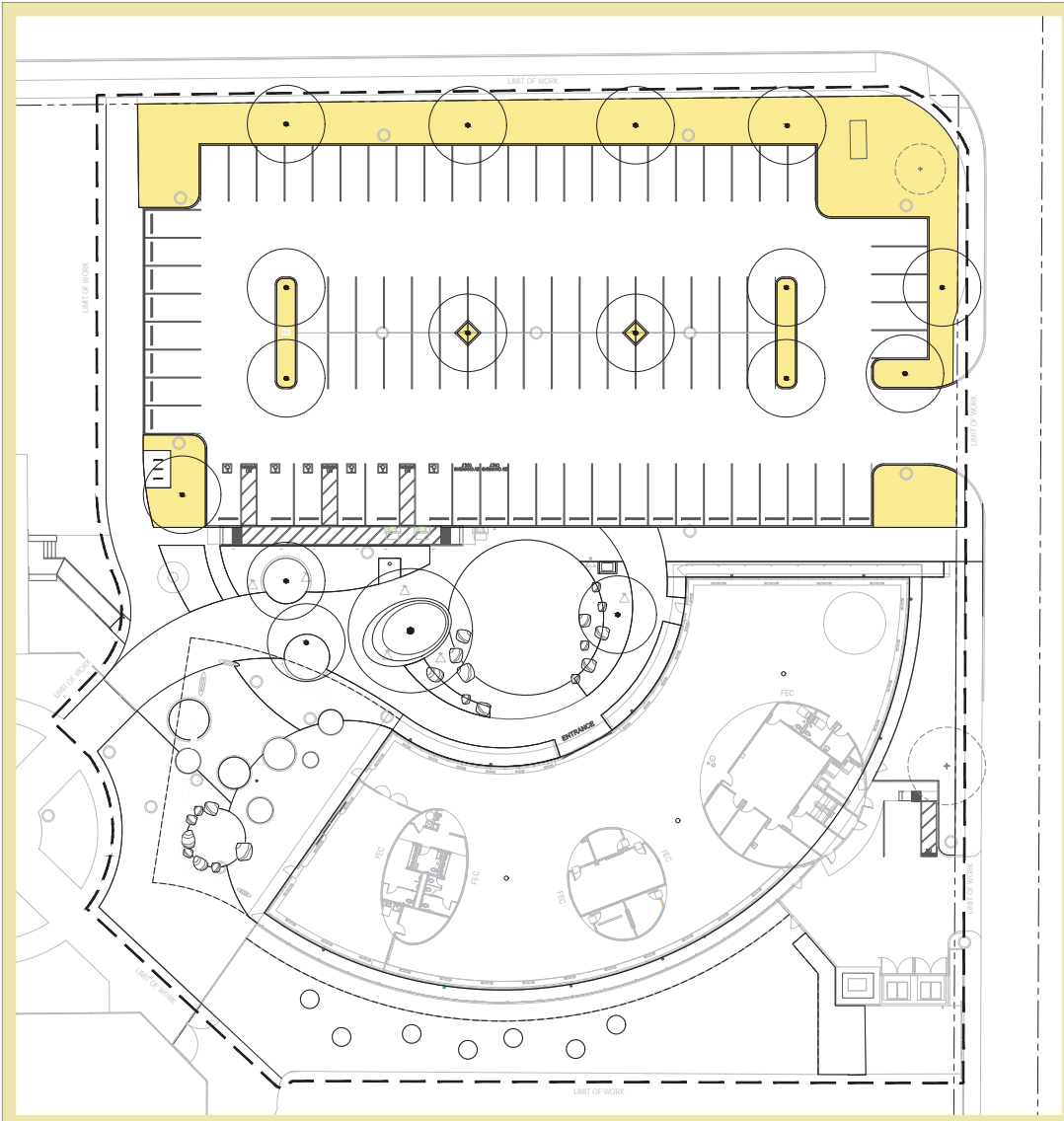
Drawing Title:

**LANDSCAPE
PLANTING PLAN**

Project No.: 006455.00 Checked by: JEB/cker

LP101

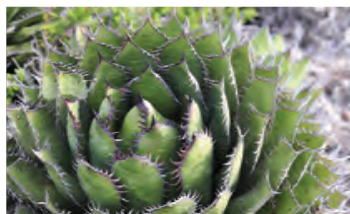




Prosopis chilensis
Chilean Mesquite



Agave attenuata 'Nova'
Nova Foxtail Agave



Agave shawii
Coastal Agave



Aloe barbadensis
Aloe Vera



Lomandra longifolia 'Breeze'
Breeze™ Mat Rush



Muhlenbergia dubia
Pine Muhly



City of Riverside
SPC Jesus S. Duran
Eastside Library

CANNONDESIGN

2875 Michelle Dr. Suite 210
Irvine, CA 92606
P: 949.250.1500

797 J Street
San Diego, CA 92101
P: 619.388.0215
www.cannondesign.com

Armstrong & Brooks Consulting
Engineers, Inc.
Civil Engineer
1350 E. Colton Ave.
Corona, CA 92881
951-372-8400

Ground Level Landscape
Architecture
Landscape Architect
2005 South Street, Suite B
San Diego, CA 92103
619-522-7990

Resonance Acoustics
Acoustics
610 E. Frontier Avenue
El Segundo, CA 90245
310-775-0265

100% DESIGN DEVELOPMENT	2/15/2024
SCHEMATIC DESIGN	1/16/2023
Rev. Description	Date



Drawing Title:

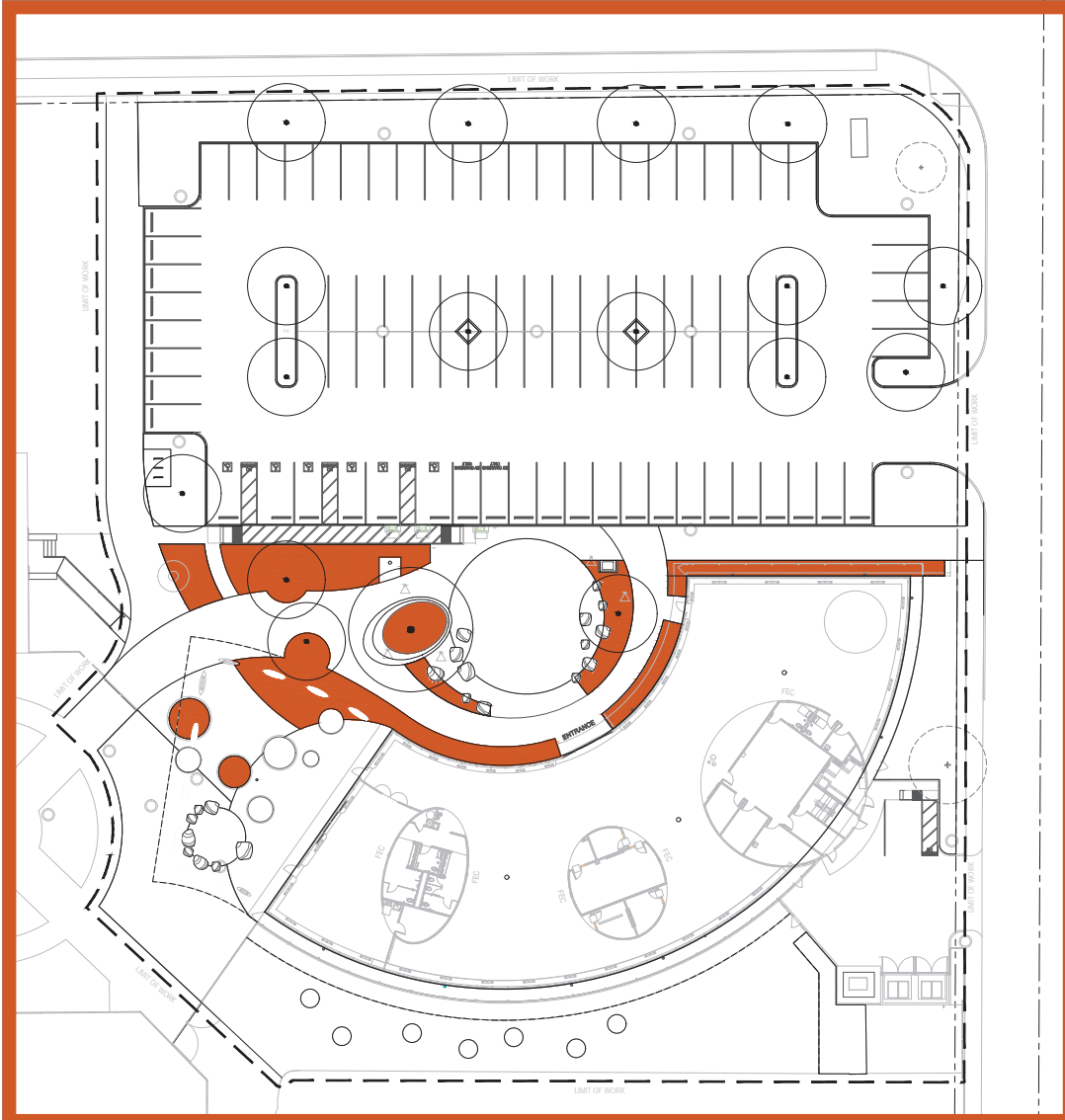
**LANDSCAPE PLANT
IMAGES:
PARKING LOT**

Project No.: 09455.00 Checked by: Checker

LP400

© 2024 The Cannon Corporation.

© 2024 The Cannon Corporation.
All rights reserved. No part of this document may be reproduced or transmitted in any form or by any means, electronic or mechanical, including photocopying, recording, or by any information storage and retrieval system, without permission in writing from Cannon Design.



Parkinsonia x 'Desert Museum'
Desert Museum Palo Verde



Aeonium decorum 'Sunburst'
Sunburst Aeonium



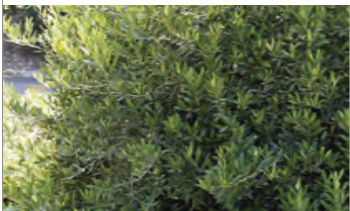
Dianella x 'Clarity Blue'
Clarity Clue™ Flax Lily



Leucospermum cordifolium 'Salmon Bud'
Pincushion Protea 'Salmon Bud'



Lucadendron salignum 'Ceam Delight'
Conebush Cream Delight



Olea europaea 'Montra'
Little Ollie® Olive



Pennisetum spathiolatum
Slender Veldt Grass



Pittosporum tobira 'Shima'
Cream de Mint™ Japanese Pittosporum



Rhampholepis umbellata 'Minor'
Dwarf Yeddo Hawthorn



Sesleria autumnalis
Common Name



City of Riverside
SPC Jesus S. Duran
Eastside Library

CANNONDESIGN

2875 Michelle Dr. Suite 210
Irvine, CA 92606
P: 949.250.1500

797 J Street
San Diego, CA 92101
P: 619.388.0215
www.cannondesign.com

Armstrong & Brooks Consulting
Engineers, Inc.
Civil Engineer
1350 E. Central Dr.
Costa Mesa, CA 92681
951-372-8400

Ground Level Landscape
Architecture
Landscape Architect
2605 South Street, Suite B
San Diego, CA 92103
619-522-7990

Resonance Acoustics
Acoustics
610 E. Fairview Avenue
El Segundo, CA 90245
310-775-0265

100% DESIGN DEVELOPMENT 2/15/2024
SCHEMATIC DESIGN 1/16/2023
Rev. Description Date



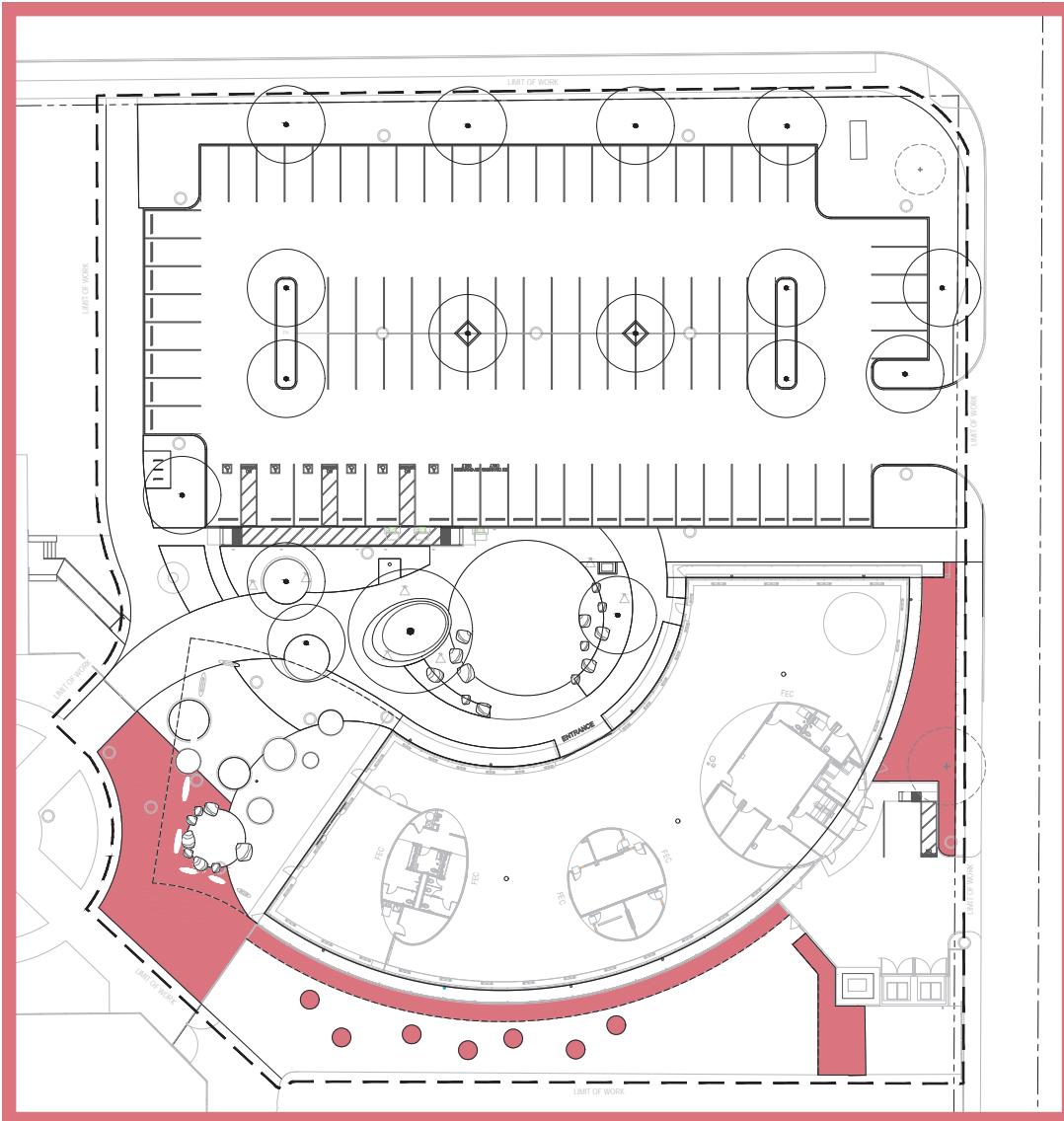
Drawing Title:

LANDSCAPE PLANT
IMAGES:
CORE

Project No.: 096455.00 Checked by: Checker

LP401

© 2024 The Cannon Corporation



Agave 'Blue Flame'
Blue Flame Agave



Carissa macrocarpa
Natal Plum



Aloe tongaensis 'Medusa'
Medusa Mozambique Tree Aloe



Euphorbia ingens
Candelabra Cactus



Zamia furfuracea
Cardboard Fern



City of Riverside
SPC Jesus S. Duran
Eastside Library

CANNONDESIGN

2875 Michale Dr, Suite 210
Irvine, CA 92606
P: 949.250.1500

797 J Street
San Diego, CA 92101
P: 619.388.0215
www.cannondesign.com

Armstrong & Brooks Consulting
Engineers, Inc.
Civil Engineer
1350 E. Colton Dr
Corona, CA 92881
951-372-8400

Ground Level Landscape
Architecture
Landscape Architect
2605 South Street, Suite B
San Diego, CA 92103
619-522-7990

Resurgence Acoustics
Acoustics
610 E. Frontier Avenue
El Segundo, CA 90245
310-775-0265

100% DESIGN DEVELOPMENT	2/15/2024
SCHEMATIC DESIGN	1/16/2023
Rev. Description	Date



Drawing Title:

**LANDSCAPE PLANT
IMAGES:
PERIMETER**

Project No.: 09455.00 Checked by: Checker

LP402

© 2024 The Cannon Corporation

© 2024 The Cannon Corporation.
All rights reserved. No part of this publication may be reproduced, stored in a retrieval system, or transmitted, in any form or by any means, electronic, mechanical, photocopying, recording, or by any information storage and retrieval system, without permission in writing from Cannon Corporation.