

CITY OF RIVERSIDE SITE PLAN

TENTATIVE TRACT MAP 39008 - LA SIERRA

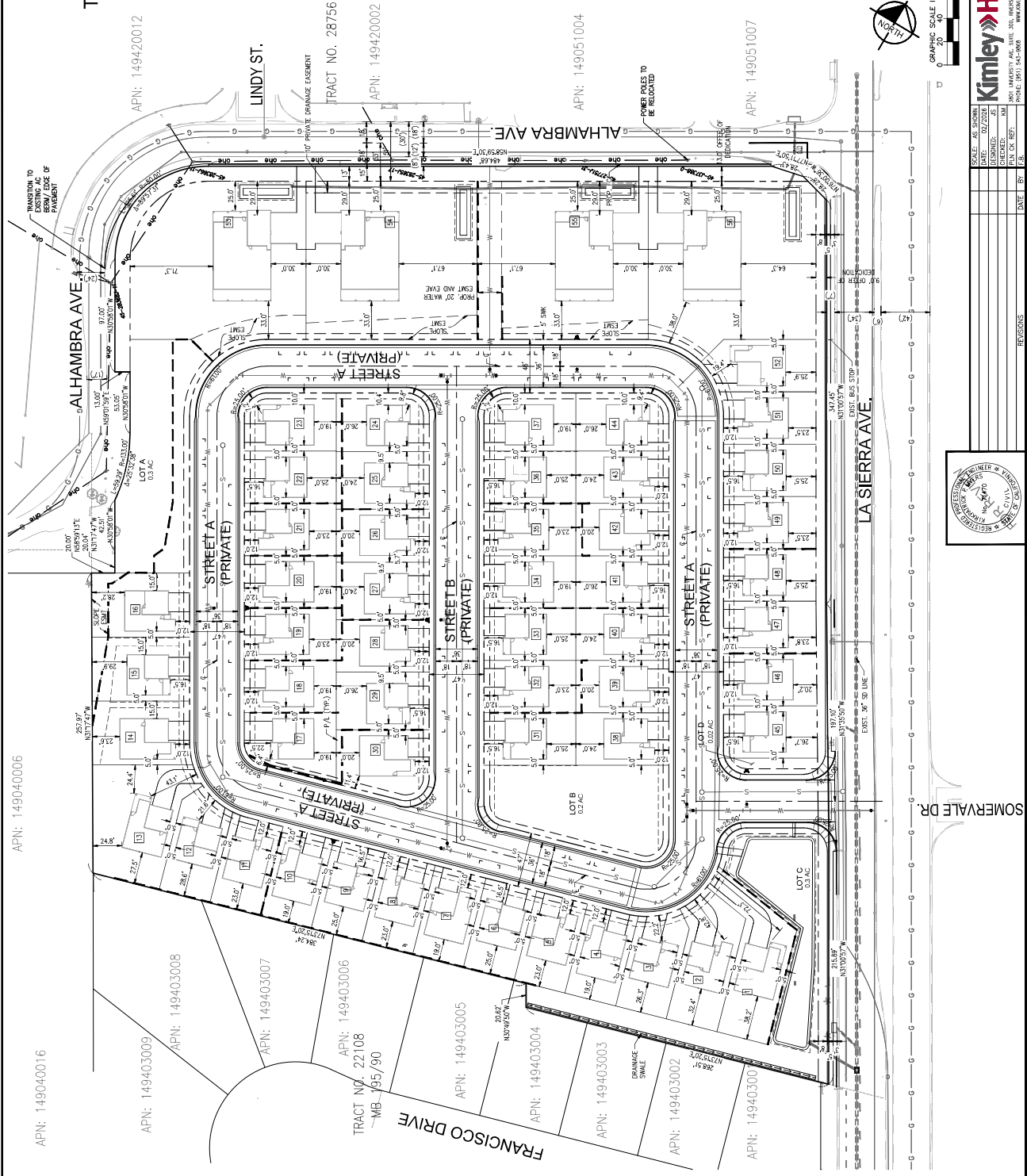
ABBREVIATIONS

FC	FACE OF CURB
PROP.	PROPOSED
PROJ.	PROPOSED
TYPE	TYPE
6	CENTERLINE
UP	LINE POINT
ST	STREET
EX	EXISTING
OB	OBSTRUCTION

ASSESSOR'S PARCEL NO
APNS 149040006, 149040007, 149040008, 149040009, 149040010, 149040011, 149040012

LEGEND

---	PROJECT BOUNDARY
---	PROP. RIGHT OF WAY
---	PROP. LOT LINES
---	PROP. WATER LINE
---	PROP. SEWER LINE
---	PROP. STORM LINE
---	PROP. FIRE HYDRANT
---	EXIST. CENTERLINE
---	EXIST. RIGHT OF WAY
---	EXIST. PARCEL LINE
---	EXIST. SURVEY LINE
---	EXIST. EASEMENT
---	EXIST. GAS LINE
---	EXIST. STORM LINE
---	LOT NUMBER LABEL
---	PAO NUMBER LABEL
---	PROP. MANHOLE
---	CATCH BASIN
---	EXIST. CONTOUR
---	PROP. CONTOUR LABEL



SCALE: AS SHOWN
DESIGNED: JMS
CHECKED: JMS
DATE: 05/20/2024

Kimley-Horn
INCORPORATED
1545 S. MAIN ST., SUITE 300
RIVERSIDE, CA 92507
PHONE: (951) 545-2668
WWW.KIMLEY-HORN.COM

PROJ. # 19252108
SHEET 3
OF 6
DATE: 05/20/2024

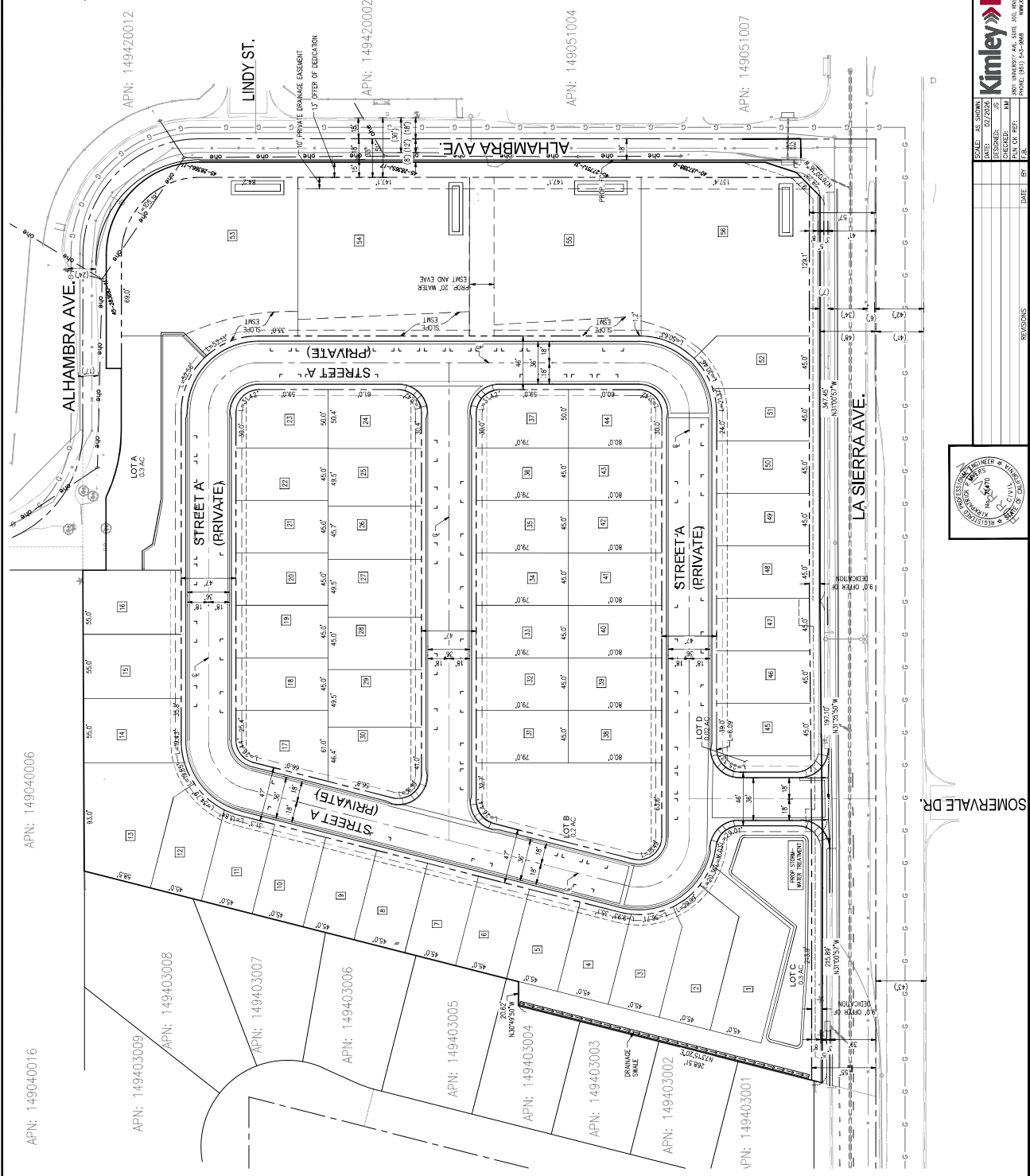
TENTATIVE TRACT MAP 39008
SITE PLAN
LA SIERRA AVE. & ALHAMBRA AVE.



CITY OF RIVERSIDE TENTATIVE TRACT MAP TENTATIVE TRACT MAP 39008 - LA SIERRA

LEGEND

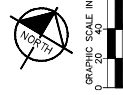
- PROJECT BOUNDARY
- PROPOSED RIGHT OF WAY
- PROPOSED LOT LINES
- PROPOSED WATER LINE
- PROPOSED SEWER LINE
- PROPOSED STORM LINE
- PROPOSED FIRE HYDRANT
- EXIST. CENTERLINE
- EXIST. RIGHT OF WAY
- EXIST. PARKER LINE
- EXIST. WATER LINE
- EXIST. GAS LINE
- EXIST. STORM LINE



LOT #	AREA (SF)
1	5807
2	5508
3	5987
4	5508
5	5508
6	5508
7	5508
8	5508
9	5508
10	5508
11	5508
12	5508
13	5508
14	5508
15	5508
16	4879
17	3981
18	5005
19	5005
20	5005
21	5005
22	5005
23	5005
24	5005
25	5005
26	5005
27	5005
28	5005
29	5005
30	5005
31	5005
32	5005
33	5005
34	5005
35	5005
36	5005
37	5005
38	5005
39	5005
40	5005
41	5005
42	5005
43	5005
44	5005
45	5005
46	5005
47	5005
48	5005
49	5005
50	5005
51	5005
52	5005
53	5005
54	5005
55	5005
56	5005
LOT A (06)	11646
LOT B (06)	10700
LOT C (06)	10966
LOT D (06)	10209

LOT #	AREA (SF)
1	5807
2	5508
3	5987
4	5508
5	5508
6	5508
7	5508
8	5508
9	5508
10	5508
11	5508
12	5508
13	5508
14	5508
15	5508
16	4879
17	3981
18	5005
19	5005
20	5005
21	5005
22	5005
23	5005
24	5005
25	5005
26	5005
27	5005
28	5005
29	5005
30	5005
31	5005
32	5005
33	5005
34	5005
35	5005
36	5005
37	5005
38	5005
39	5005
40	5005
41	5005
42	5005
43	5005
44	5005
45	5005
46	5005
47	5005
48	5005
49	5005
50	5005
51	5005
52	5005
53	5005
54	5005
55	5005
56	5005
LOT A (06)	11646
LOT B (06)	10700
LOT C (06)	10966
LOT D (06)	10209

LOT #	AREA (SF)
1	5807
2	5508
3	5987
4	5508
5	5508
6	5508
7	5508
8	5508
9	5508
10	5508
11	5508
12	5508
13	5508
14	5508
15	5508
16	4879
17	3981
18	5005
19	5005
20	5005
21	5005
22	5005
23	5005
24	5005
25	5005
26	5005
27	5005
28	5005
29	5005
30	5005
31	5005
32	5005
33	5005
34	5005
35	5005
36	5005
37	5005
38	5005
39	5005
40	5005
41	5005
42	5005
43	5005
44	5005
45	5005
46	5005
47	5005
48	5005
49	5005
50	5005
51	5005
52	5005
53	5005
54	5005
55	5005
56	5005
LOT A (06)	11646
LOT B (06)	10700
LOT C (06)	10966
LOT D (06)	10209



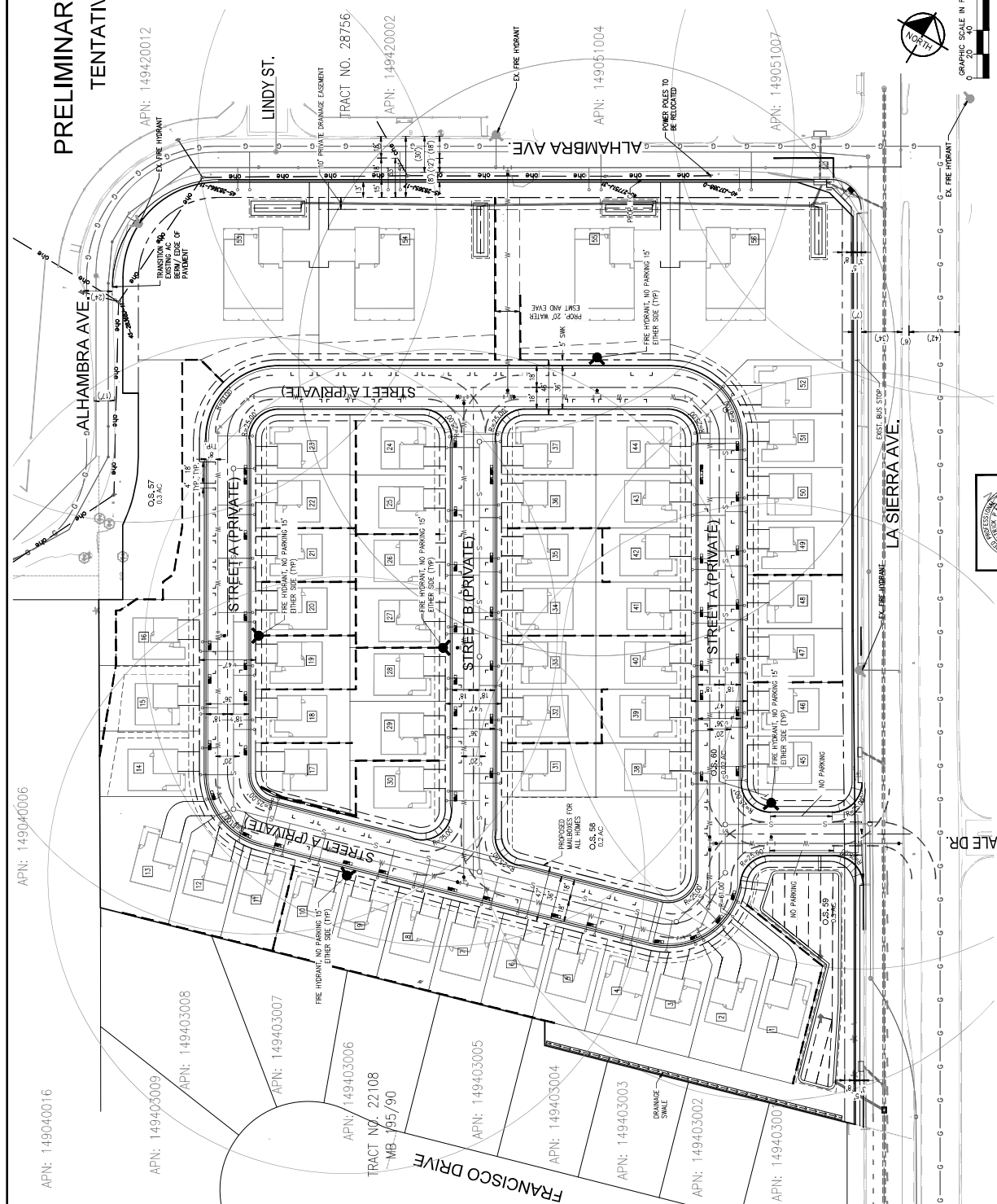
Kimley-Horn
INCORPORATED
1000 W. 10TH ST., SUITE 200
RIVERSIDE, CA 92507
TEL: (951) 543-2668
WWW.KIMLEY-HORN.COM

SCALE	AS SHOWN
DESIGNED	MM
CHECKED	MM
DATE	BY
REVISIONS	

TENTATIVE TRACT MAP 39008
TENTATIVE TRACT MAP
LA SIERRA AVE. & ALHAMBRA AVE.

PROJ. # 19252.018
SHEET 4
OF 6
SHEETS
DWG. 19252.018

CITY OF RIVERSIDE PRELIMINARY PARKING CIRCULATION PLAN TENTATIVE TRACT MAP 39008 - LA SIERRA



LEGEND

- PROJECT BOUNDARY
- PROPOSED RIGHT OF WAY
- PROPOSED LOT LINES
- PROPOSED FIRE HYDRANT
- EXIST. CENTERLINE
- EXIST. RIGHT OF WAY
- EXIST. LOT LINE
- PROPOSED FIRE TRUCK TURN RADIUS
- LOT NUMBER LABEL
- ASSIGNED TRASH CAN

ABBREVIATIONS

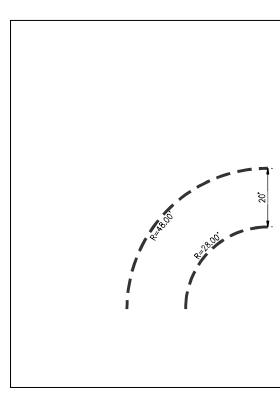
- FC FACE OF CURB
- PROP. PROPOSED
- PROPOSED
- TYP TYPICAL
- WELDING STRUCTURE
- CEILING
- UP LOW POINT
- RET. RETAINING WALL
- DR. DRAINAGE
- GR. GROUND BREAK

ASSESSOR'S PARCEL NO
 APNS: 149020011, 149020012, 149020013, 149020004,
 149020008, & 149020014

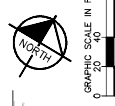
PARKING SUMMARY

GARAGE PARKING (2 PER LOT)	112
DRIVEWAY PARKING (2 PER LOT)	112
ONSITE STREET PARKING	69
TOTAL	293

NOTES: THE PARKING SUMMARY SHOWN ON THIS PLAN IS FOR REFERENCE ONLY. THE PROJECT DOES NOT PROPOSE TO STRIKE PARALLEL PARKING.



FIRE TRUCK TURNING CLEARANCE DETAIL
N.T.S.



Kimley-Horn
 ENGINEERS, ARCHITECTS & SCIENTISTS
 1500 W. 15th Street, Suite 300
 San Jose, CA 95128
 (408) 281-5454
 WWW.KIMLEY-HORN.COM

REVISIONS

NO.	DATE	BY	REVISIONS

SCALE: AS SHOWN
DESIGNED: JMS
CHECKED: KJM
IN CHARGE: JMS

DATE: 05/20/2024
 SHEET NO. 6 OF 6
 PROJECT: TENTATIVE TRACT MAP 39008 - LA SIERRA AVE. & ALHAMBRA AVE.