

Measure Z Purchase – KME Type 1 Fire Engines

Fire Department

City Council
AUGUST 19, 2025



RiversideCA.gov

1

BACKGROUND

Measure Z – Fire Department vehicle replacement adopted in 2017.

- Five (5) year spending plan to replace aging Fire Department Fleet.
- 2022 – Vehicle Replacement plan was updated.

Vehicle Replacement Guidelines

- National Fire Protection Agency (NFPA) provides replacement standards.
- Type 1 Fire Engines frontline service 10-15 years.
- Additional 10 years in reserve service depending on maintenance cost.



2

RiversideCA.gov

2

DISCUSSION

Type 1 Fire Engines being replaced:

| | | | |
|-----------------|----------------|----------------|----------------|
| Model | KME S60 (E343) | KME S60 (E349) | KME S60 (E360) |
| In-Service Date | 8/29/2006 | 6/15/2007 | 10/2/2007 |
| Mileage | 162,312 | 139,716 | 175,089 |



3

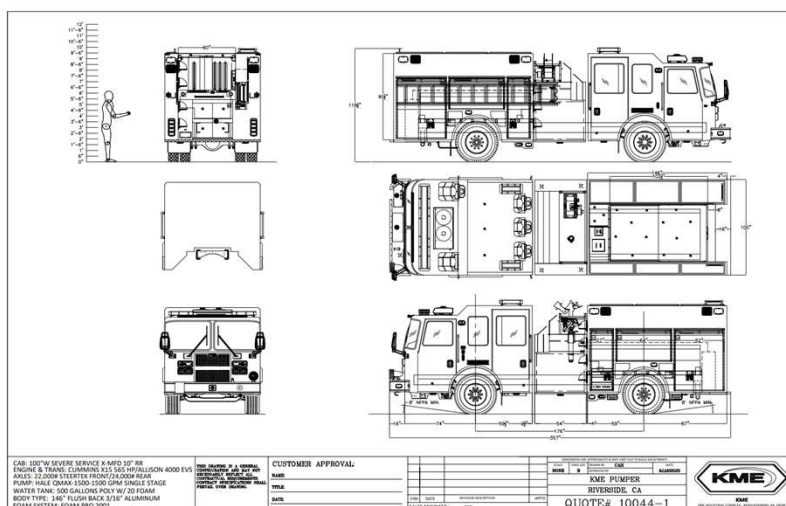
RiversideCA.gov

3

DISCUSSION

New Type 1 Fire Engines

- Three (3) KME Severe Service Pumps
- Fire Apparatus Solutions – Rialto, CA
- Estimated build completion – 27 months



4



RiversideCA.gov

4

RECOMMENDATIONS

That the City Council:

1. Approve the purchase of three (3) Type 1 KME Severe Service Pumpers from Fire Apparatus Solutions of Rialto, CA through Sourcewell Contract 113021-RVG in the total amount of \$4,082,248.80;
2. Authorize the City Manager, or designee, to execute all documents necessary to complete this purchase, including making minor and non-substantive changes.



5

RiversideCA.gov