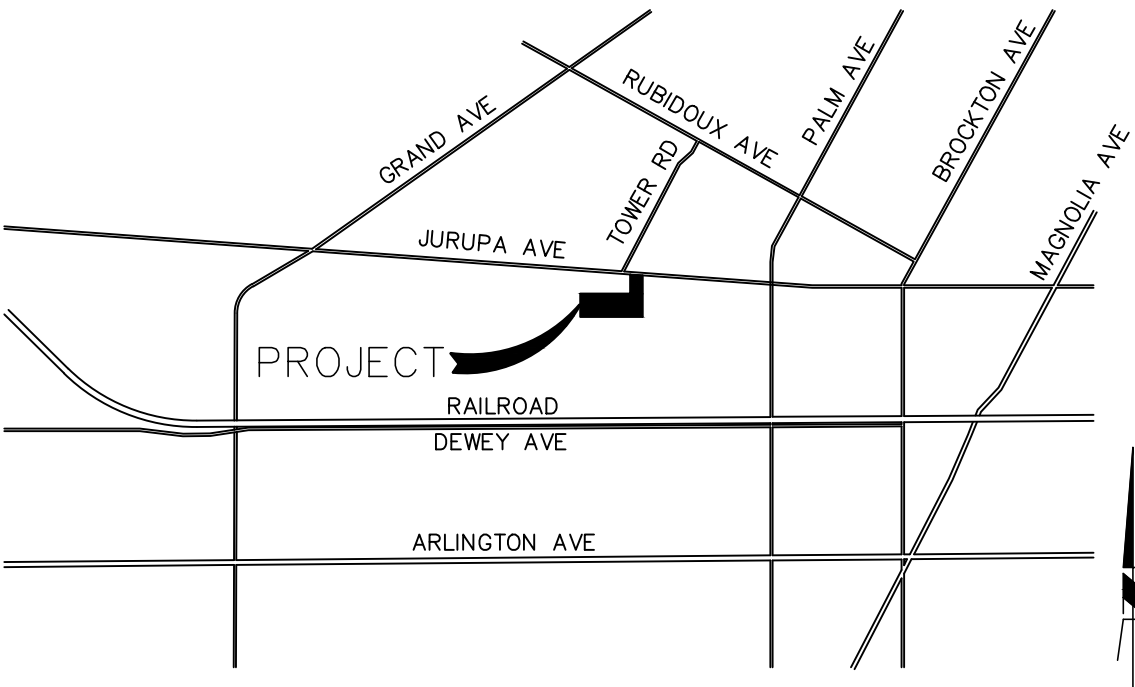


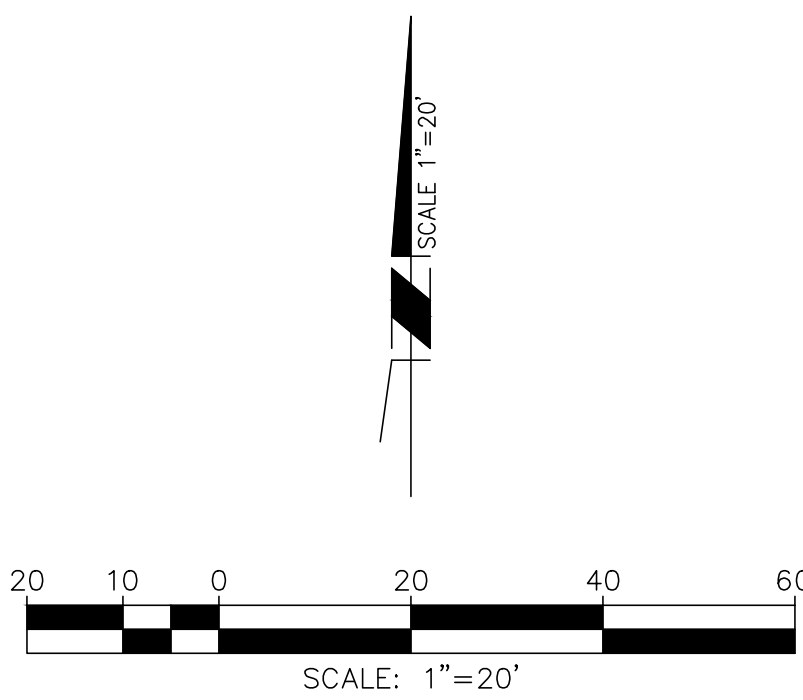
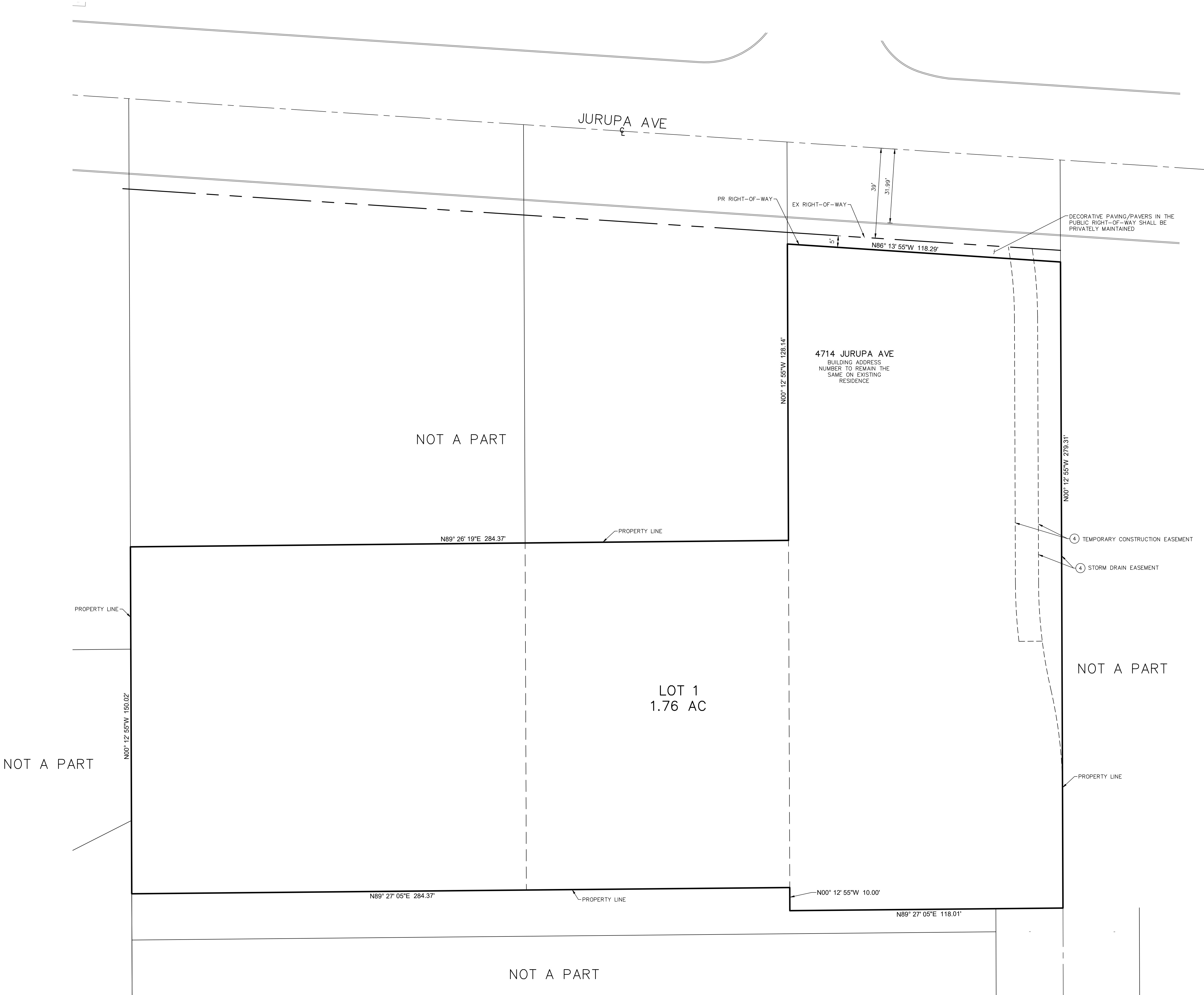
TENTATIVE TRACT MAP NO. 39277

FOR CONDOMINIUM PURPOSES


IN THE CITY OF RIVERSIDE  
COUNTY OF RIVERSIDE, STATE OF CALIFORNIA



VICINITY MAP  
SCALE: NTS



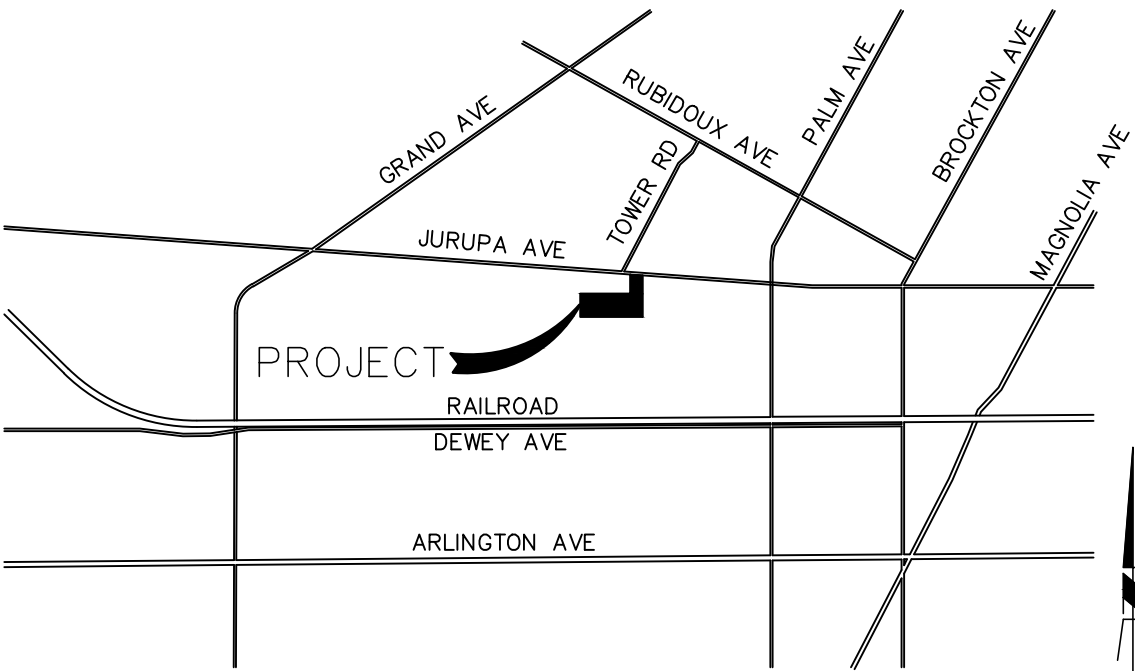
PC-2025-00085 (TTM)  
Exhibit 6 - Tentative Tract Map No. 39277

						BENCHMARK				BASIS OF BEARINGS		<div><div>SEAL</div><div>PROFESSIONAL SURVEYOR No. 68795 CIVIL STATE OF CALIFORNIA</div></div> <div><div>DRAWN BY:</div><div>DESIGNED BY:</div><div>CHECKED BY:</div><div>APPROVED BY:</div></div> <div><div>CPK</div><div>CPK</div><div>RSA</div><div></div></div>		TTM NO. 39277		SHEET NO. <b>TTM</b> SHEET 1 of 1
												TENTATIVE TRACT MAP NO. 39277				
												prepared for MONTE VISTA HOMES				

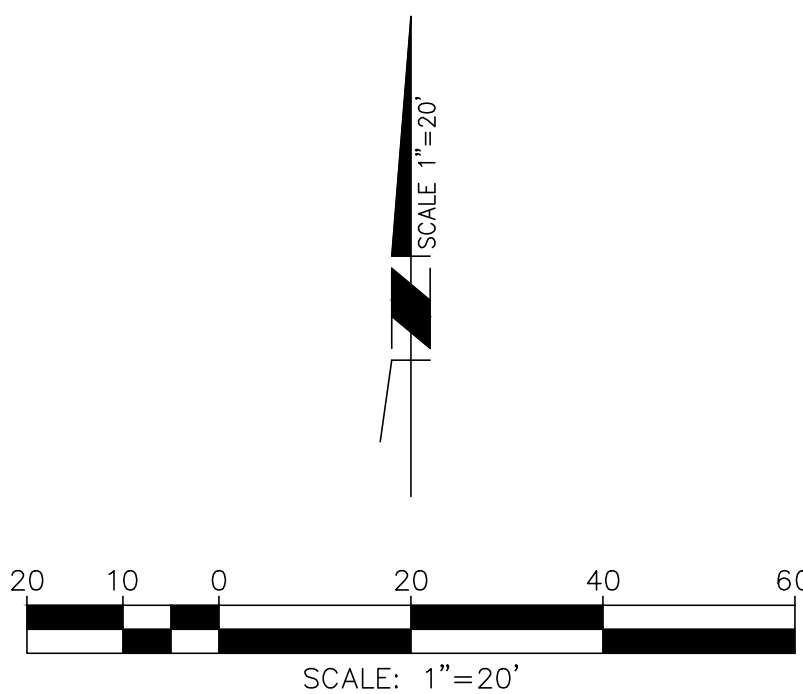
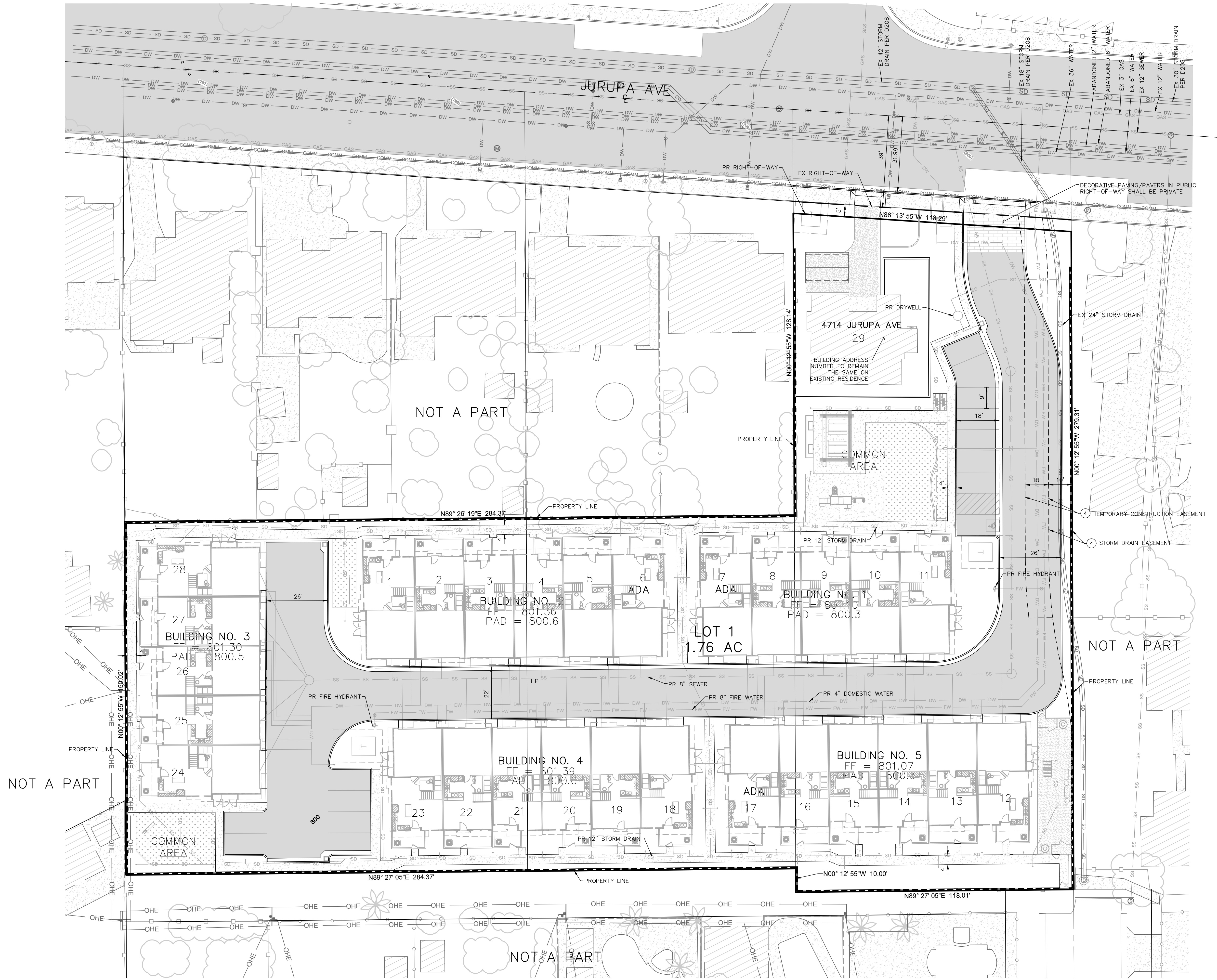
SCALE: 1" = 20'  
GROSS AREA: +/- 1.76 AC  
CONTOURS: 1 FOOT  
TOTAL LOTS: 1 NUMBERED  
TOTAL UNITS: 25 CONDOMINIUMS

TENTATIVE TRACT MAP NO. 39277  
FOR CONDOMINIUM PURPOSES


IN THE CITY OF RIVERSIDE  
COUNTY OF RIVERSIDE, STATE OF CALIFORNIA



VICINITY MAP  
SCALE: NTS



PC-2025-00085 (TTM)  
Exhibit 6 - Tentative Tract Map No. 39277

			BENCHMARK		BASIS OF BEARINGS				DRAWN BY: CPK		TTM NO. 39277		SHEET NO.	
			DESCRIPTION: P.K. NAIL AND CITY ENGINEER TAG IN THE SOUTHEASTLY CORNER OF A CATCH BASIN IN THE NORTHERLY CURB OF JURUPA AVENUE, 37 FEET WESTERLY OF STEARNS STREET.		THE CENTERLINE OF COVER STREET N89°28'00"E PER THE HARTSOUGH SUBDIVISION M8023-042.				DESIGNED BY: CPK		description TENTATIVE TRACT MAP NO. 39277		TTM	
			ELEV: 787.128'						CHECKED BY: RSA		prepared for MONTE VISTA HOMES		SHEET 1 of 1	
									APPROVED BY: RSA		7/8/2025			