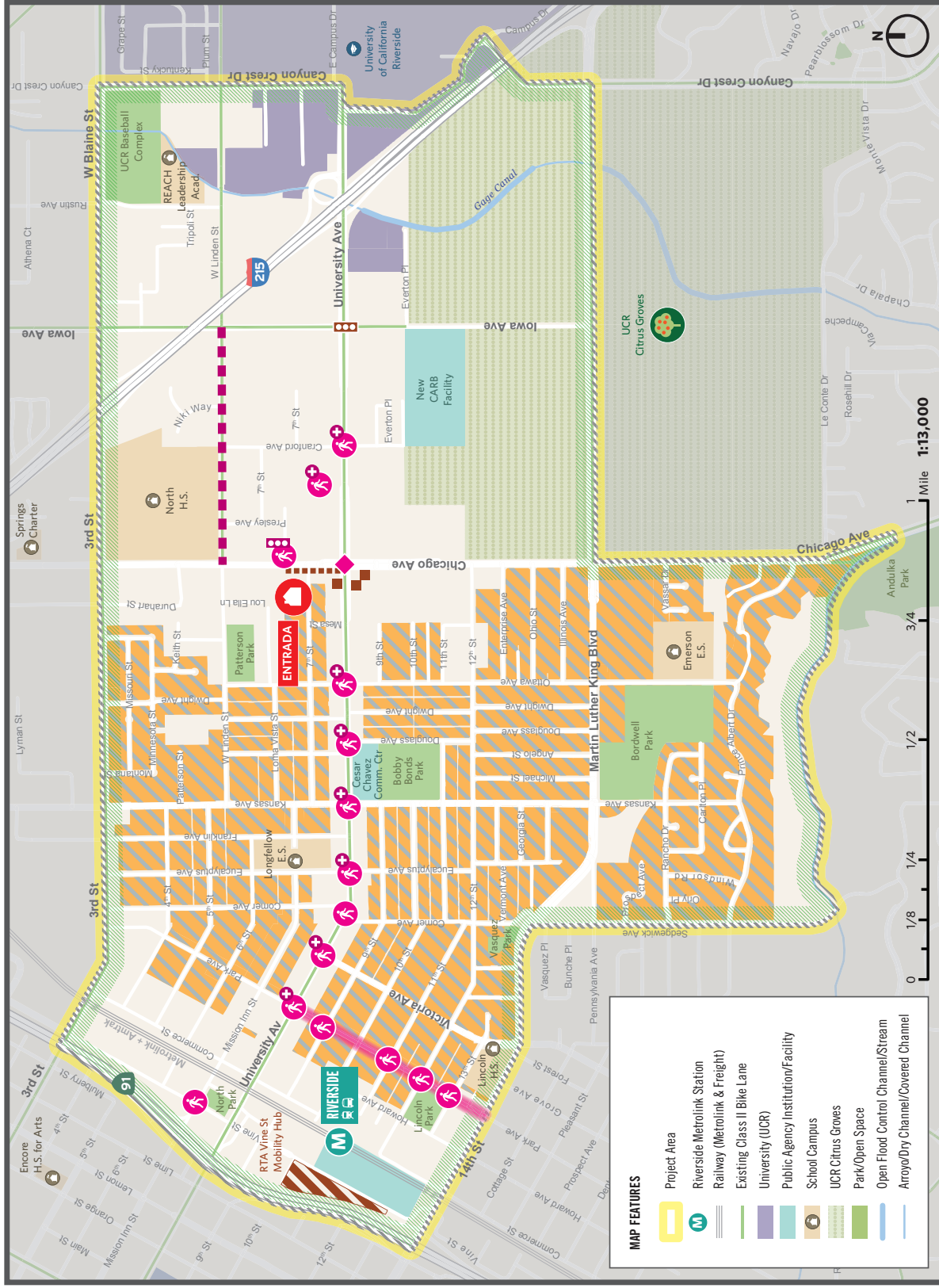


EASTSIDE CLIMATE COLLABORATIVE



TCC FUNDED PROJECTS (PROJECT WIDE)

- Solar Installation & Energy Efficiency**
 - Project 1 – Energy for All (GRID)
 - All Single-Family Parcels Eligible
 - ~100 installations
- Water Efficiency**
 - Project 2 – Water-Energy Comm. Action Network (wean) (SAWPA)
 - All Single-Family Parcels Eligible
 - ~100,000 sq ft of installations
- Urban Greening and Green Infrastructure**
 - Project 3 – Eastside Greening (Tree People)
 - (Project Area-wide) ~1,000 street trees, 500 shade trees, 500 fruit trees
- Transformative Plans (Project-Area Wide)**
 - Community Engagement Plan (CEP)
 - Displacement Avoidance Plan (DAP)
 - Workforce Development Plan (WDP)

AHSC LEVERAGE FUNDED PROJECTS

- Affordable Housing/Sustainable Communities**
 - Leverage Project 1 – Entrada Housing Project (WHDC)
 - 65 units
- Active Transportation & Mobility Enhancements**
 - Leverage Project 2 – Ped & Bike Mobility Enhancements (Riverside PW)
 - Improvements to Chicago/University Intersection (inc. ped. timing improvements, scramble walk)
 - Park Ave People Street
 - Lighting, murals, parklets, curb ramps, sw repairs
 - Linden St Class IV Cool Pavement Protected Bike Lane
 - Upgrade to High-Vis Continental Crosswalk
 - Upgrade to High-Vis Continental Crosswalk and add Accessible Pedestrian Signal Buttons
 - New Pedestrian Signal at Chicago & 7th St

- Transit and Rail Access**
 - Leverage Project 3 – Vine St Mobility Hub Expansion (RTA)
 - ~paired with transit passes
 - Entrada Solar Arcade
 - Improved Bus Bays
 - Advanced Signal Detection @ University/Iowa

MAP FEATURES

- Project Area
- Riverside Metrolink Station
- Railway (Metrolink & Freight)
- Existing Class II Bike Lane
- University (UCR)
- Public Agency Institution/Facility
- School Campus
- UCR Citrus Groves
- Park/Open Space
- Open Flood Control Channel/Stream
- Arroyo/Dry Channel/Covered Channel

Prepared By