

1. SBMF / 16/20 INTEGRAL CEMENT PLASTER; COLOR: MATCH **DUNN EDWARDS - DROPLETS DEW381**
2. SBMF / 20/30 INTEGRAL COLOR CEMENT PLASTER W/ TOOLED LINES; COLOR: MATCH **DUNN EDWARDS - LIMESTONE DE6233**
3. PLASTER FINIAL  
**A: DUNN EDWARDS-DEW381**  
**B: DUNN EDWARDS-DE6233**
4. PLASTER CORBEL; **DUNN EDWARDS-DEW381**
5. PLASTER EAIVE; **DUNN EDWARDS-DEC756**
6. SLOPED CEMENT PLASTER SILL AT INSET WINDOW; PAINTED **DUNN EDWARDS-DEW381**
7. FOAM PLASTER MOULDING;  
**A: PAINTED DUNN EDWARDS- DEW381**  
**B: PAINTED DUNN EDWARDS- DE6233**
8. PRE-CAST CONCRETE BASE; **EMPIRE PRECAST-CREAM C011**
9. FAUX ROOF BEAM, FORMED FOAM PLANT-ON W/ CEMENT PLASTER COATING; **DUNN EDWARDS-DEC756**

10. 2-PIECE CLAY TILE ROOF; REDLAND; **TERRA COTTA BLEND-2211**
11. BRONZE ANODIZED ALUMINUM STOREFRONT; **ARCADIA AB-7**
12. PAINTED STEEL IRON RAILING; **DUNN EDWARDS-DE6314**
13. VINYL WINDOW W/ BRONZE CAP-STOCK DEEP SET IN THICKEN WALL; **MILGARD-BRONZE**
14. CEMENTITIOUS PANEL, PAINTED TO MATCH RAILING; **DUNN EDWARDS-DE6314**
15. SUNBRELLA CANVAS AWNING ON STEEL FRAME; **SUNBRELLA - FERN**
16. METAL DOOR W/ METAL FRAME; PAINTED **DUNN EDWARDS-DEW381**
17. PAINT ON CONCRETE; **DUNN EDWARDS-DE6233**
18. GLAZED CERAMIC TILES; DAL TILE 6x6 COLOR MATCH™ - MATTE **ARTICHOKE 12**
19. AWNING SUPPORT IN STEEL; **BLACK**
20. WOOD PERGOLA, PAINTED; **DUNN EDWARDS-DEC766**

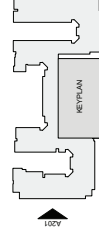
APN # 290-170-036  
 1575 UNIVERSITY AVENUE,  
 RIVERSIDE, CALIFORNIA

**CGI+** REAL ESTATE INVESTMENT STRATEGIES

\* SBMF - LA Habra Stucco Santa Barbara Mission Finish

SOUTH ELEVATION  
**A201**

**DESIGNARC**  
 ARCHITECTURE





- 1. SBMF / 16/20 INTEGRAL CEMENT PLASTER;  
COLOR: MATCH **DUNN EDWARDS - DROPLETS DEW381**
- 2. SBMF / 20/30 INTEGRAL COLOR CEMENT PLASTER W/ TOOLED LINES;  
COLOR: MATCH **DUNN EDWARDS - LIMESTONE DE6233**
- 3. PLASTER FINIAL  
**A: DUNN EDWARDS-DEW381**  
**B: DUNN EDWARDS-DE6233**
- 4. PLASTER CORBEL; **DUNN EDWARDS-DEW381**
- 5. PLASTER EAWE; **DUNN EDWARDS-DEC756**
- 6. SLOPED CEMENT PLASTER SILL AT INSET WINDOW;  
PAINTED **DUNN EDWARDS-DEW381**
- 7. FOAM PLASTER MOULDING;  
**A: PAINTED DUNN EDWARDS- DEW381**  
**B: PAINTED DUNN EDWARDS- DE6233**
- 8. PRE-CAST CONCRETE BASE; **EMPIRE PRECAST-CREAM C011**
- 9. FAUX ROOF BEAM, FORMED FOAM PLANT-ON W/ CEMENT PLASTER COATING; **DUNN EDWARDS-DEC756**

- 10. 2-PIECE CLAY TILE ROOF; REDLAND; **TERRA COTTA BLEND-2211**
- 11. BRONZE ANODIZED ALUMINUM STOREFRONT; **ARCADIA AB-7**
- 12. PAINTED STEEL IRON RAILING; **DUNN EDWARDS-DE6314**
- 13. VINYL WINDOW W/ BRONZE CAP-STOCK DEEP SET IN THICKEN WALL;  
**MILGARD-BRONZE**
- 14. CEMENTITIOUS PANEL, PAINTED TO MATCH RAILING;  
**DUNN EDWARDS-DE6314**
- 15. SUNBRELLA CANVAS AWNING ON STEEL FRAME; **SUNBRELLA - FERN**
- 16. METAL DOOR W/ METAL FRAME; PAINTED **DUNN EDWARDS-DEW381**
- 17. PAINT ON CONCRETE; **DUNN EDWARDS-DE6233**
- 18. GLAZED CERAMIC TILES; DAL TILE 6x6 COLOR MATCH™ - MATTE  
**ARTICHOKE 12**
- 19. AWNING SUPPORT IN STEEL; **BLACK**
- 20. WOOD PERGOLA, PAINTED; **DUNN EDWARDS-DEC766**

APN #290-170-036  
1575 UNIVERSITY AVENUE,  
RIVERSIDE, CALIFORNIA

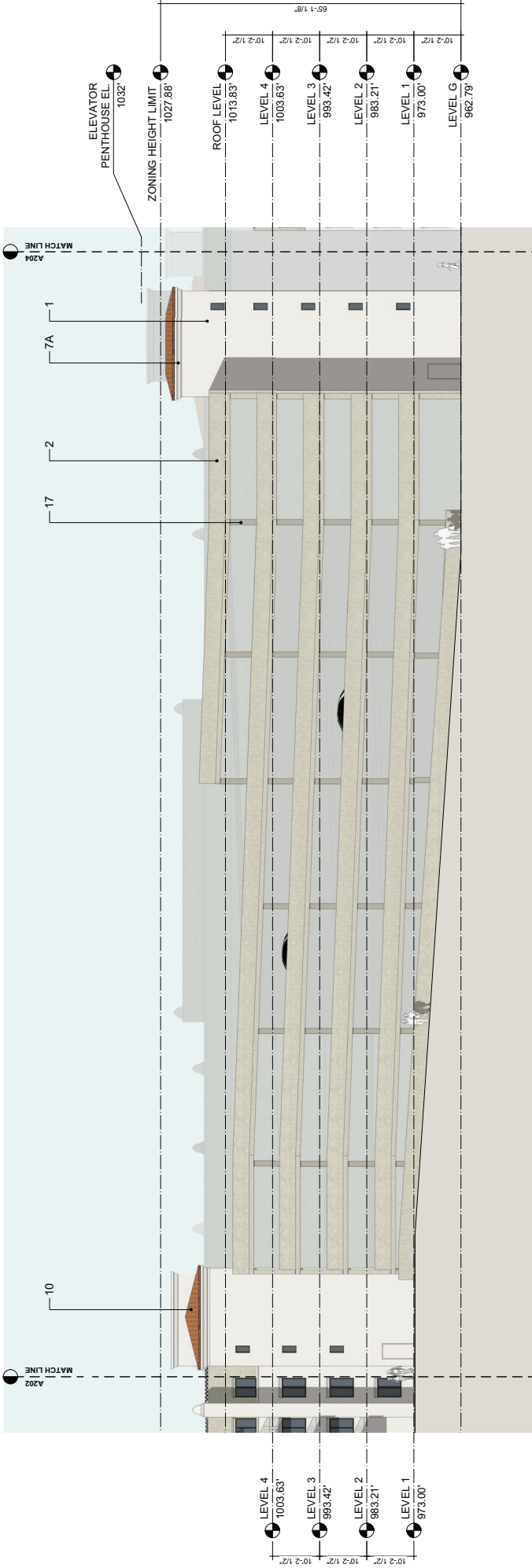
**CGI+** REAL ESTATE INVESTMENT STRATEGIES

\* SBMF - LA Habra Stucco Santa Barbara Mission Finish

EAST ELEVATION - SOUTH  
**AZ02**

**DESIGNARC**





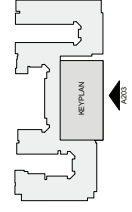
- 1. 16/20 INTEGRAL COLOR CEMENT PLASTER;  
DUNN EDWARDS - DROPLETS DEW381
- 2. 20/30 INTEGRAL COLOR CEMENT PLASTER W/ TOOLED LINES;  
DUNN EDWARDS - LIMESTONE DE6233
- 3. PLASTER FINIAL  
A: DUNN EDWARDS-DEW381  
B: DUNN EDWARDS-DE6233
- 4. PLASTER CORBEL; DUNN EDWARDS-DEW381
- 5. PLASTER EAWE; DUNN EDWARDS-DEC756
- 6. SLOPED CEMENT PLASTER SILL AT INSET WINDOW;  
PAINTED DUNN EDWARDS-DEW381
- 7. FOAM PLASTER MOULDING;  
A: PAINTED DUNN EDWARDS- DEW381  
B: PAINTED DUNN EDWARDS- DE6233
- 8. PRE-CAST CONCRETE BASE; EMPIRE PRECAST-CREAM C011
- 9. FAUX ROOF BEAM, FORMED FOAM PLANT-ON W/ CEMENT PLASTER COATING; DUNN EDWARDS-DEC756

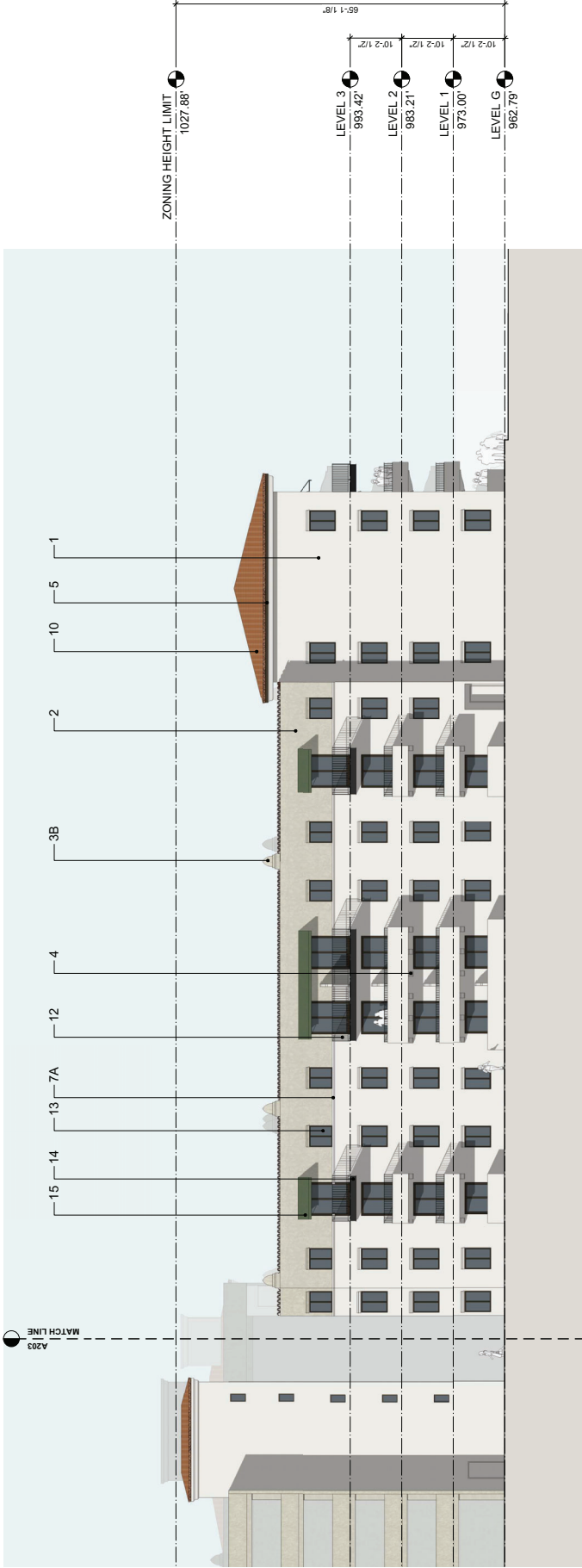
- 10. 2-PIECE CLAY TILE ROOF; REDLAND; TERRA COTTA BLEND-2211
- 11. BRONZE ANODIZED ALUMINUM STOREFRONT; ARCADIA AB-7
- 12. PAINTED STEEL IRON RAILING; DUNN EDWARDS-DE6314
- 13. VINYL WINDOW W/ BRONZE CAP-STOCK DEEP SET IN THICKEN WALL;  
MILGARD-BRONZE
- 14. CEMENTITIOUS PANEL, PAINTED TO MATCH RAILING;  
DUNN EDWARDS-DE6314
- 15. SUNBRELLA CANVAS AWNING ON STEEL FRAME; SUNBRELLA - FERN
- 16. METAL DOOR W/ METAL FRAME; PAINTED DUNN EDWARDS-DEW381
- 17. PAINT ON CONCRETE; DUNN EDWARDS-DE6233
- 18. GLAZED CERAMIC TILES; DAL TILE 6x6 COLOR MATCH™ - MATTE ARTICHOKE 12
- 19. AWNING SUPPORT IN STEEL; BLACK
- 20. WOOD PERGOLA, PAINTED; DUNN EDWARDS-DEC756

APN #290-170-036  
1575 UNIVERSITY AVENUE,  
RIVERSIDE, CALIFORNIA

CGI+ REAL ESTATE INVESTMENT STRATEGIES

EAST ELEVATION - GARAGE  
AZ03





- 1. 16/20 INTEGRAL COLOR CEMENT PLASTER;  
DUNN EDWARDS - DROPLETS DEW381
- 2. 20/30 INTEGRAL COLOR CEMENT PLASTER W/ TOOLED LINES;  
DUNN EDWARDS - LIMESTONE DE6233
- 3. PLASTER FINIAL  
A: DUNN EDWARDS-DEW381  
B: DUNN EDWARDS-DE6233
- 4. PLASTER CORBEL; DUNN EDWARDS-DEW381
- 5. PLASTER EAWE; DUNN EDWARDS-DEC756
- 6. SLOPED CEMENT PLASTER SILL AT INSET WINDOW;  
PAINTED DUNN EDWARDS-DEW381
- 7. FOAM PLASTER MOULDING;  
A: PAINTED DUNN EDWARDS- DEW381  
B: PAINTED DUNN EDWARDS- DE6233
- 8. PRE-CAST CONCRETE BASE; EMPIRE PRECAST-CREAM C011
- 9. FAUX ROOF BEAM, FORMED FOAM PLANT-ON W/ CEMENT PLASTER COATING; DUNN EDWARDS-DEC756

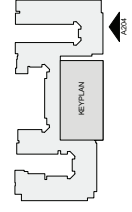
- 10. 2-PIECE CLAY TILE ROOF; REDLAND; TERRA COTTA BLEND-2211
- 11. BRONZE ANODIZED ALUMINUM STOREFRONT; ARCADIA AB-7
- 12. PAINTED STEEL IRON RAILING; DUNN EDWARDS-DE6314
- 13. VINYL WINDOW W/ BRONZE CAP-STOCK DEEP SET IN THICKEN WALL;  
MILGARD-BRONZE
- 14. CEMENTITIOUS PANEL, PAINTED TO MATCH RAILING;  
DUNN EDWARDS-DE6314
- 15. SUNBRELLA CANVAS AWNING ON STEEL FRAME; SUNBRELLA - FERN
- 16. METAL DOOR W/ METAL FRAME; PAINTED DUNN EDWARDS-DEW381
- 17. PAINT ON CONCRETE; DUNN EDWARDS-DE6233
- 18. GLAZED CERAMIC TILES; DAL TILE 6x6 COLOR MATCH™ - MATTE ARTICHOKE 12
- 19. AWNING SUPPORT IN STEEL; BLACK
- 20. WOOD PERGOLA, PAINTED; DUNN EDWARDS-DEC756

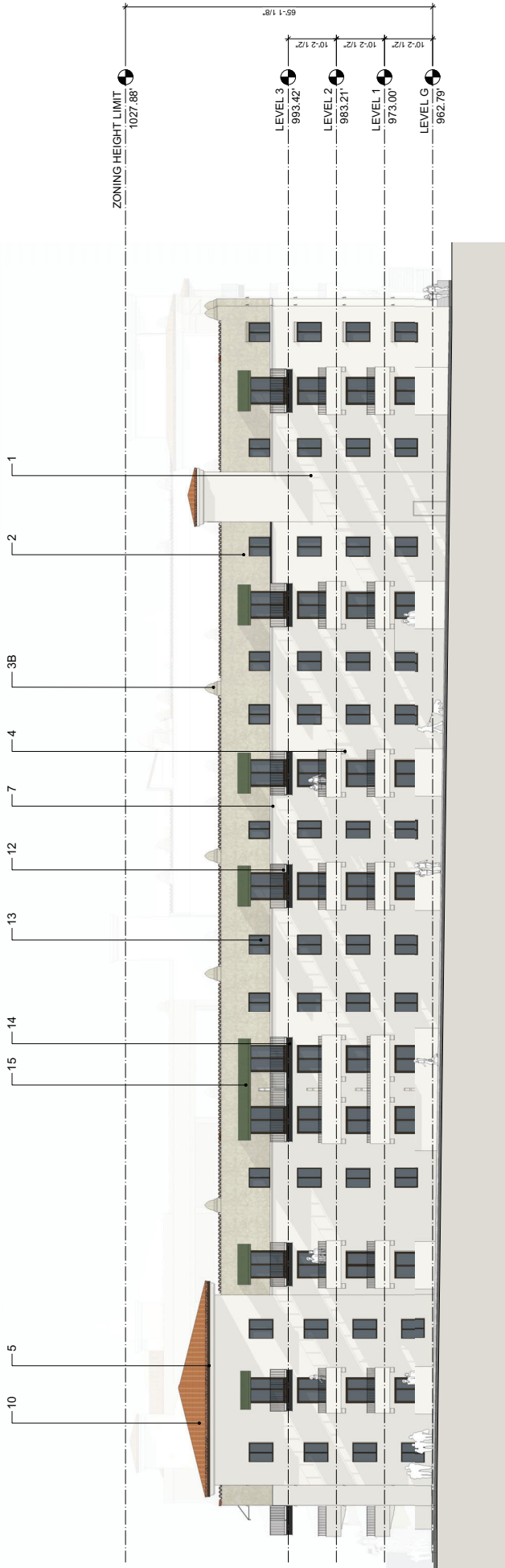
APN #290-170-036  
1575 UNIVERSITY AVENUE,  
RIVERSIDE, CALIFORNIA

CGI+ REAL ESTATE INVESTMENT STRATEGIES

EAST ELEVATION - NORTH  
AZ04

DESIGNARC





- 1. 16/20 INTEGRAL COLOR CEMENT PLASTER; **DUNN EDWARDS - DROPLETS DEW381**
- 2. 20/30 INTEGRAL COLOR CEMENT PLASTER W/ TOOLED LINES; **DUNN EDWARDS - LIMESTONE DE6233**
- 3. PLASTER FINIAL  
  - A: **DUNN EDWARDS-DEW381**
  - B: **DUNN EDWARDS-DE6233**
- 4. PLASTER CORBEL; **DUNN EDWARDS-DEW381**
- 5. PLASTER EAWE; **DUNN EDWARDS-DEC756**
- 6. SLOPED CEMENT PLASTER SILL AT INSET WINDOW; **PAINTED DUNN EDWARDS-DEW381**
- 7. FOAM PLASTER MOULDING;  
  - A: **PAINTED DUNN EDWARDS- DEW381**
  - B: **PAINTED DUNN EDWARDS- DE6233**
- 8. PRE-CAST CONCRETE BASE; **EMPIRE PRECAST-CREAM C011**
- 9. FAUX ROOF BEAM, FORMED FOAM PLANT-ON W/ CEMENT PLASTER COATING; **DUNN EDWARDS-DEC756**

- 10. 2-PIECE CLAY TILE ROOF; **REDLAND; TERRA COTTA BLEND-2211**
- 11. BRONZE ANODIZED ALUMINUM STOREFRONT; **ARCADIA AB-7**
- 12. PAINTED STEEL IRON RAILING; **DUNN EDWARDS-DE6314**
- 13. VINYL WINDOW W/ BRONZE CAP-STOCK DEEP SET IN THICKEN WALL; **MILGARD-BRONZE**
- 14. CEMENTITIOUS PANEL, PAINTED TO MATCH RAILING; **DUNN EDWARDS-DE6314**
- 15. SUNBRELLA CANVAS AWNING ON STEEL FRAME; **SUNBRELLA - FERN**
- 16. METAL DOOR W/ METAL FRAME; **PAINTED DUNN EDWARDS-DEW381**
- 17. PAINT ON CONCRETE; **DUNN EDWARDS-DE6233**
- 18. GLAZED CERAMIC TILES; **DALTILE 6x6 COLOR MATCH™ - MATTE ARTICHOKE 12**
- 19. AWNING SUPPORT IN STEEL; **BLACK**
- 20. WOOD PERGOLA, PAINTED; **DUNN EDWARDS-DEC756**

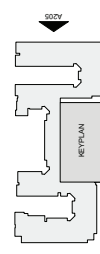
APN #290-170-036  
 1575 UNIVERSITY AVENUE,  
 RIVERSIDE, CALIFORNIA

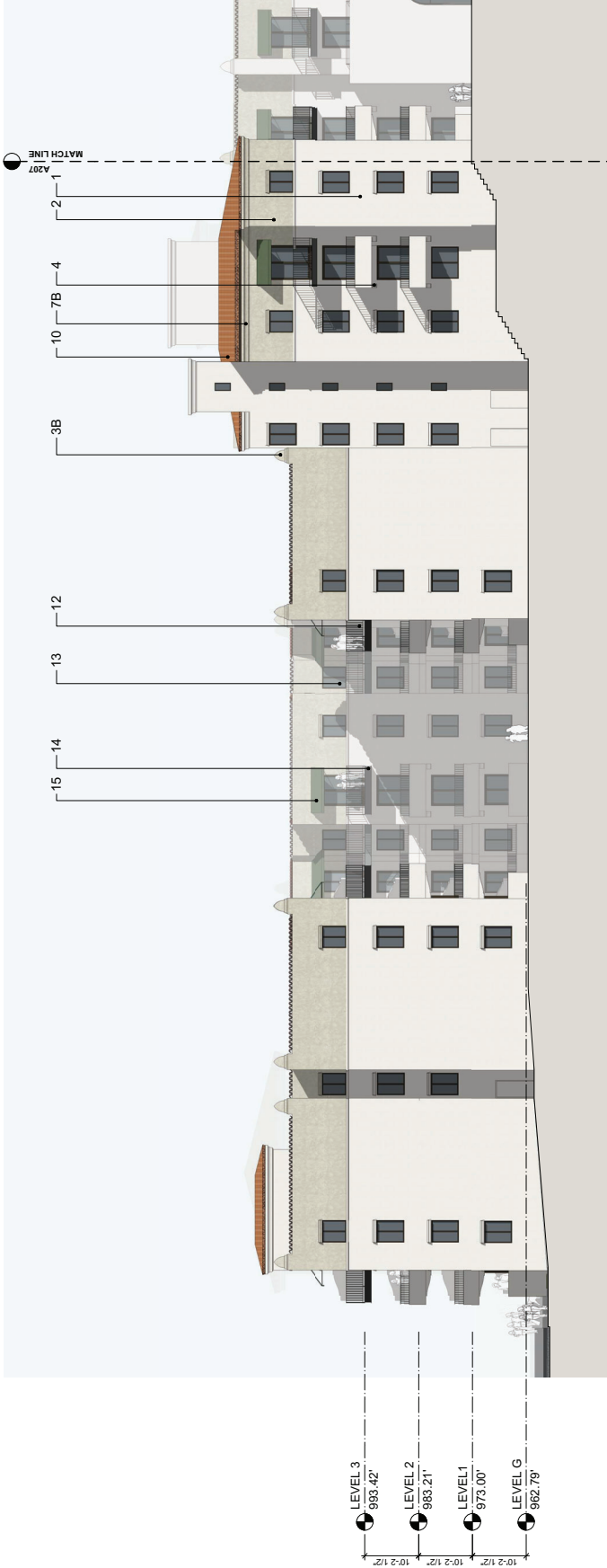
**CGI+** REAL ESTATE INVESTMENT STRATEGIES

NORTH ELEVATION

**AZ05**  
 DESIGNARC

DATE: 07/20/2022  
 TIME: 10:00 AM  
 PROJECT: 2022-001429 (PPE) Exhibit 9 - Project Plans

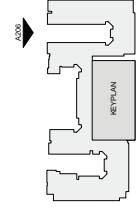




LEVEL 3  
993.42'  
LEVEL 2  
983.21'  
LEVEL 1  
973.00'  
LEVEL G  
962.79'

- 1. 16/20 INTEGRAL COLOR CEMENT PLASTER;  
DUNN EDWARDS - DROPLETS DEW381
- 2. 20/30 INTEGRAL COLOR CEMENT PLASTER W/ TOOLED LINES;  
DUNN EDWARDS - LIMESTONE DE6233
- 3. PLASTER FINIAL  
A: DUNN EDWARDS-DEW381  
B: DUNN EDWARDS-DE6233
- 4. PLASTER CORBEL; DUNN EDWARDS-DEW381
- 5. PLASTER EAWE; DUNN EDWARDS-DEC756
- 6. SLOPED CEMENT PLASTER SILL AT INSET WINDOW;  
PAINTED DUNN EDWARDS-DEW381
- 7. FOAM PLASTER MOULDING;  
A: PAINTED DUNN EDWARDS- DEW381  
B: PAINTED DUNN EDWARDS- DE6233
- 8. PRE-CAST CONCRETE BASE; EMPIRE PRECAST-CREAM C011
- 9. FAUX ROOF BEAM, FORMED FOAM PLANT-ON W/ CEMENT PLASTER COATING; DUNN EDWARDS-DEC756

- 10. 2-PIECE CLAY TILE ROOF; REDLAND; TERRA COTTA BLEND-2211
- 11. BRONZE ANODIZED ALUMINUM STOREFRONT; ARCADIA AB-7
- 12. PAINTED STEEL IRON RAILING; DUNN EDWARDS-DE6314
- 13. VINYL WINDOW W/ BRONZE CAP-STOCK DEEP SET IN THICKEN WALL; MILGARD-BRONZE
- 14. CEMENTITIOUS PANEL, PAINTED TO MATCH RAILING;  
DUNN EDWARDS-DE6314
- 15. SUNBRELLA CANVAS AWNING ON STEEL FRAME; SUNBRELLA - FERN
- 16. METAL DOOR W/ METAL FRAME; PAINTED DUNN EDWARDS-DEW381
- 17. PAINT ON CONCRETE; DUNN EDWARDS-DE6233
- 18. GLAZED CERAMIC TILES; DAL TILE 6x6 COLOR MATCH™ - MATTE ARTICHOKE 12
- 19. AWNING SUPPORT IN STEEL; BLACK
- 20. WOOD PERGOLA, PAINTED; DUNN EDWARDS-DEC756



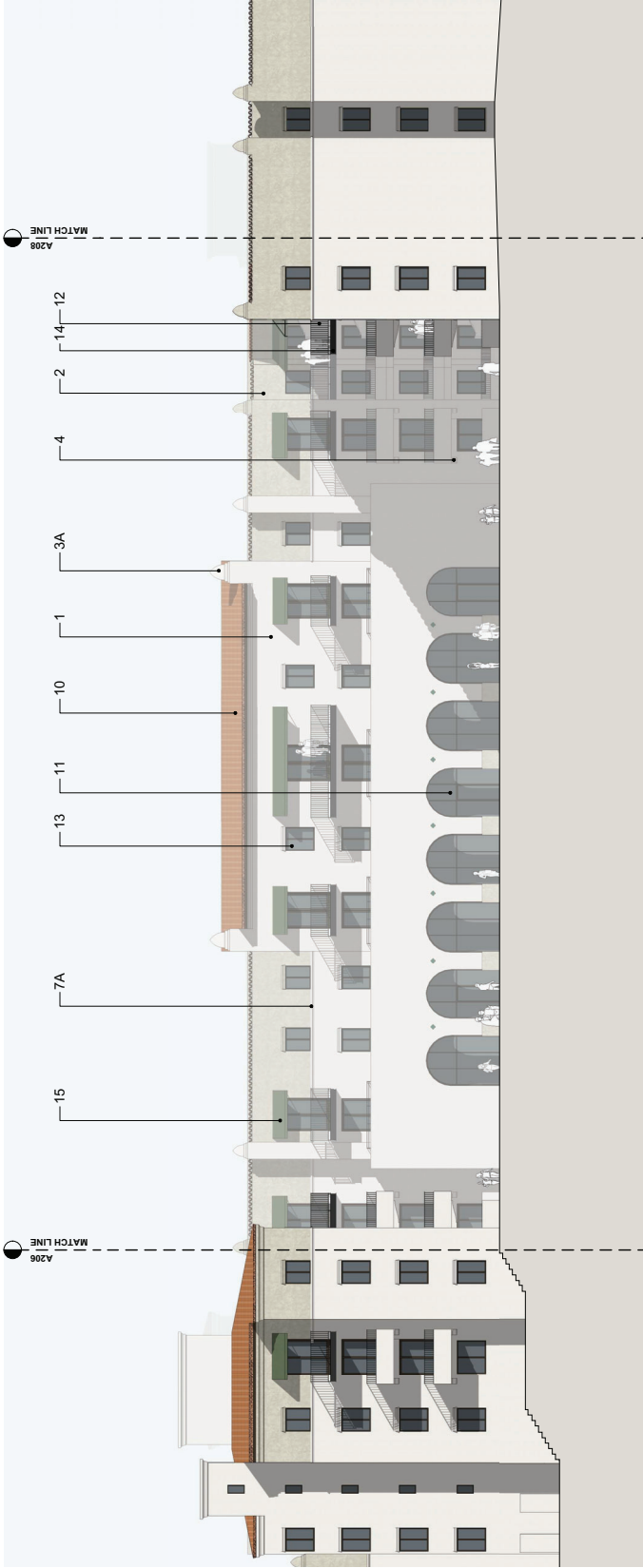
APN #290-170-036  
1575 UNIVERSITY AVENUE,  
RIVERSIDE, CALIFORNIA

CGI+ REAL ESTATE INVESTMENT STRATEGIES

WEST ELEVATION - NORTH  
AZ06  
DATE PLOTTED: 11/15/2022 10:58:00 AM

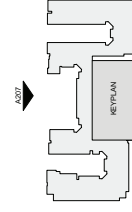


DESIGNARC  
ARCHITECTURE



- 1. 16/20 INTEGRAL COLOR CEMENT PLASTER; **DUNN EDWARDS - DROPLETS DEW381**
- 2. 20/30 INTEGRAL COLOR CEMENT PLASTER W/ TOOLED LINES; **DUNN EDWARDS - LIMESTONE DE6233**
- 3. PLASTER FINIAL  
**A: DUNN EDWARDS-DEW381**  
**B: DUNN EDWARDS-DE6233**
- 4. PLASTER CORBEL; **DUNN EDWARDS-DEW381**
- 5. PLASTER EAWE; **DUNN EDWARDS-DEC756**
- 6. SLOPED CEMENT PLASTER SILL AT INSET WINDOW; **PAINTED DUNN EDWARDS-DEW381**
- 7. FOAM PLASTER MOULDING;  
**A: PAINTED DUNN EDWARDS- DEW381**  
**B: PAINTED DUNN EDWARDS- DE6233**
- 8. PRE-CAST CONCRETE BASE; **EMPIRE PRECAST-CREAM C011**
- 9. FAUX ROOF BEAM, FORMED FOAM PLANT-ON W/ CEMENT PLASTER COATING; **DUNN EDWARDS-DEC756**

- 10. 2-PIECE CLAY TILE ROOF; **REDLAND; TERRA COTTA BLEND-2211**
- 11. BRONZE ANODIZED ALUMINUM STOREFRONT; **ARCADIA AB-7**
- 12. PAINTED STEEL IRON RAILING; **DUNN EDWARDS-DE6314**
- 13. VINYL WINDOW W/ BRONZE CAP-STOCK DEEP SET IN THICKEN WALL; **MILGARD-BRONZE**
- 14. CEMENTITIOUS PANEL, PAINTED TO MATCH RAILING; **DUNN EDWARDS-DE6314**
- 15. SUNBRELLA CANVAS AWNING ON STEEL FRAME; **SUNBRELLA - FERN**
- 16. METAL DOOR W/ METAL FRAME; **PAINTED DUNN EDWARDS-DEW381**
- 17. PAINT ON CONCRETE; **DUNN EDWARDS-DE6233**
- 18. GLAZED CERAMIC TILES; **DALTILE 6x6 COLOR MATCH™ - MATTE ARTICHOKE 12**
- 19. AWNING SUPPORT IN STEEL; **BLACK**
- 20. WOOD PERGOLA, PAINTED; **DUNN EDWARDS-DEC756**



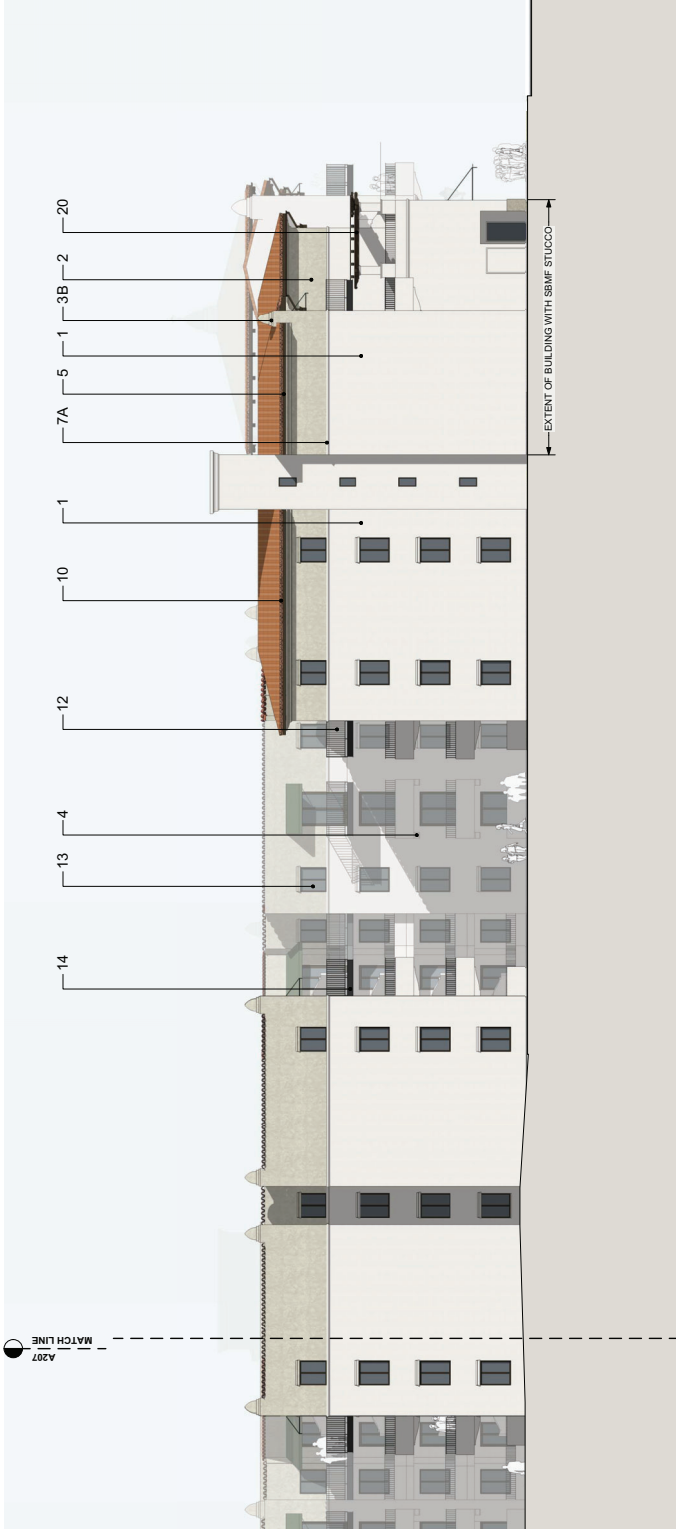
APN #200-170-036  
 1575 UNIVERSITY AVENUE,  
 RIVERSIDE, CALIFORNIA

**CGI+** REAL ESTATE INVESTMENT STRATEGIES

WEST ELEVATION - POOL COURTYARD  
**AZ07**

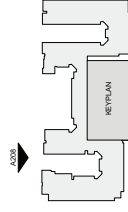
**DESIGNARC**

0 5 10 20 40 FEET



- 1. SBMF / 16/20 INTEGRAL CEMENT PLASTER;  
COLOR: MATCH **DUNN EDWARDS - DROPLETS DEW381**
- 2. SBMF / 20/30 INTEGRAL COLOR CEMENT PLASTER W/ TOOLED LINES;  
COLOR: MATCH **DUNN EDWARDS - LIMESTONE DE6233**
- 3. PLASTER FINIAL  
**A: DUNN EDWARDS-DEW381**  
**B: DUNN EDWARDS-DE6233**
- 4. PLASTER CORBEL; **DUNN EDWARDS-DEW381**
- 5. PLASTER EAWE; **DUNN EDWARDS-DEC756**
- 6. SLOPED CEMENT PLASTER SILL AT INSET WINDOW;  
PAINTED **DUNN EDWARDS-DEW381**
- 7. FOAM PLASTER MOULDING;  
**A: PAINTED DUNN EDWARDS- DEW381**  
**B: PAINTED DUNN EDWARDS- DE6233**
- 8. PRE-CAST CONCRETE BASE; **EMPIRE PRECAST-CREAM C011**
- 9. FAUX ROOF BEAM, FORMED FOAM PLANT-ON W/ CEMENT PLASTER  
COATING; **DUNN EDWARDS-DEC756**

- 10. 2-PIECE CLAY TILE ROOF; REDLAND; **TERRA COTTA BLEND-2211**
- 11. BRONZE ANODIZED ALUMINUM STOREFRONT; **ARCADIA AB-7**
- 12. PAINTED STEEL IRON RAILING; **DUNN EDWARDS-DE6314**
- 13. VINYL WINDOW W/ BRONZE CAP-STOCK DEEP SET IN THICKEN WALL;  
**MILGARD-BRONZE**
- 14. CEMENTITIOUS PANEL, PAINTED TO MATCH RAILING;  
**DUNN EDWARDS-DE6314**
- 15. SUNBRELLA CANVAS AWNING ON STEEL FRAME; **SUNBRELLA - FERN**
- 16. METAL DOOR W/ METAL FRAME; PAINTED **DUNN EDWARDS-DEW381**
- 17. PAINT ON CONCRETE; **DUNN EDWARDS-DE6233**
- 18. GLAZED CERAMIC TILES; DAL TILE 6x6 COLOR MATCH™ - MATTE  
**ARTICHOKE 12**
- 19. AWNING SUPPORT IN STEEL; **BLACK**
- 20. WOOD PERGOLA, PAINTED; **DUNN EDWARDS-DEC756**



APN #290-170-036  
1575 - UNIVERSITY AVENUE,  
RIVERSIDE, CALIFORNIA

**CGI+** REAL ESTATE  
INVESTMENT STRATEGIES

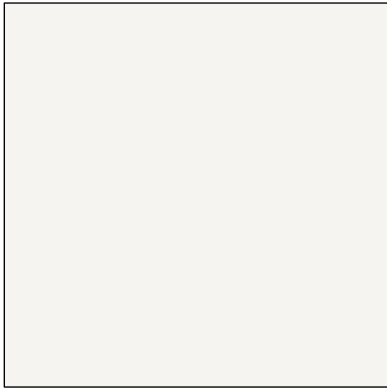
\* SBMF - LA Habra Stucco Santa Barbara Mission Finish

WEST ELEVATION - SOUTH  
**A208**  
DATE: 07/27/2022

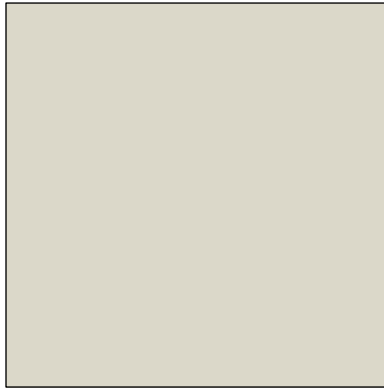
**DESIGNARC**



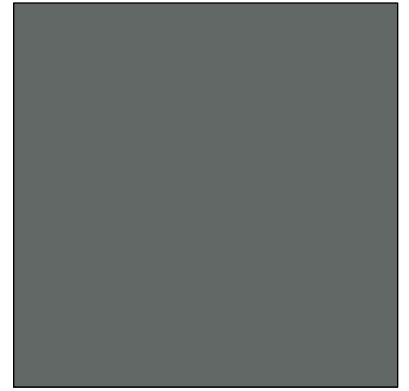




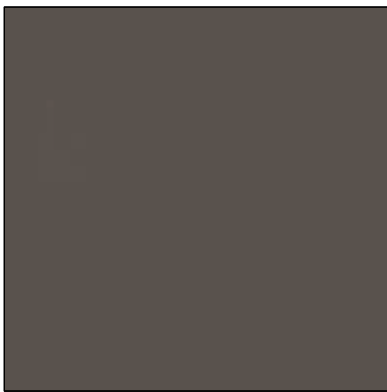
**SBMF\*, 16/20 INTEGRAL  
COLOR, CEMENT PLASTER**  
DUNN EDWARDS  
DROPLETS\_DEW381



**SBMF\*, 20/30 INTEGRAL  
COLOR, CEMENT PLASTER**  
DUNN EDWARDS  
LIMESTONE\_DE6233



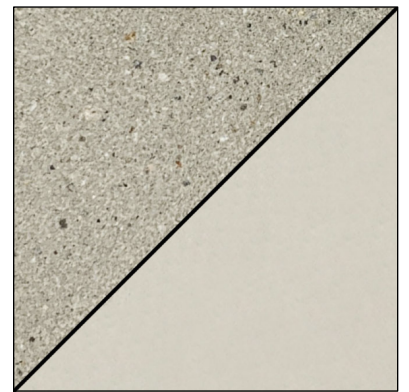
**PAINTED STEEL IRON  
RAILING**  
DUNN EDWARDS  
DARK PEWTER\_DE6314



**PAINTED CORBELS / FASCIA  
/ PERGOLA**  
DUNN EDWARDS  
WEATHERED BROWN\_DEC756



**VINYL DOOR - WINDOW**  
MILGARD\_BRONZE



**PRECAST CONCRETE  
EMPIRE PRECAST**  
CREAM\_C-011



**ROOF TILE**  
REDLAND\_TERRA COTTA  
BLEND\_2211



**AWNING FABRIC**  
SUNBRELLA\_FERN



**GLAZED CERAMIC TILE**  
DAL TILE\_COLOR MATCH™  
\_MATTE ARTICHOKE 12

\* SBMF - LA Habra Stucco Santa Barbara Mission Finish

APN # 250-170-036

1575 UNIVERSITY AVENUE,  
RIVERSIDE, CALIFORNIA

**MATERIAL BOARD**  
FEBRUARY 22, 2022



PR-2022-001429 (PPE) Exhibit 9 - Project Plans

2508 Overland Ave, CA 90064 T. 310.204.8950 www.designarc.net  
All design ideas and plans indicated or represented by these drawings are owned by and are the property of DesignARC and were created and developed for use in connection with the specified project. None of such ideas, designs, or plans shall be used for any purpose whatsoever without the written permission of DesignARC. © DesignARC Inc.