



## ESTABLISHMENT OF 5-TON WEIGHT LIMIT RESTRICTION -SEGMENT OF FILLMORE STREET

### Public Works Department

Transportation Board Meeting  
February 7, 2024

RiversideCA.gov

## BACKGROUND

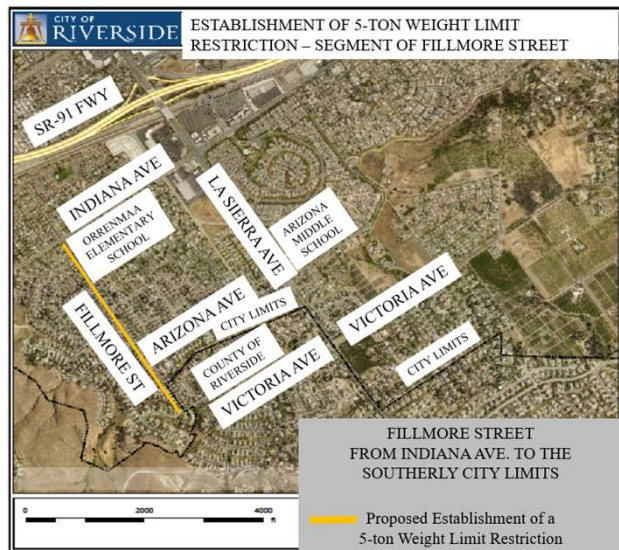
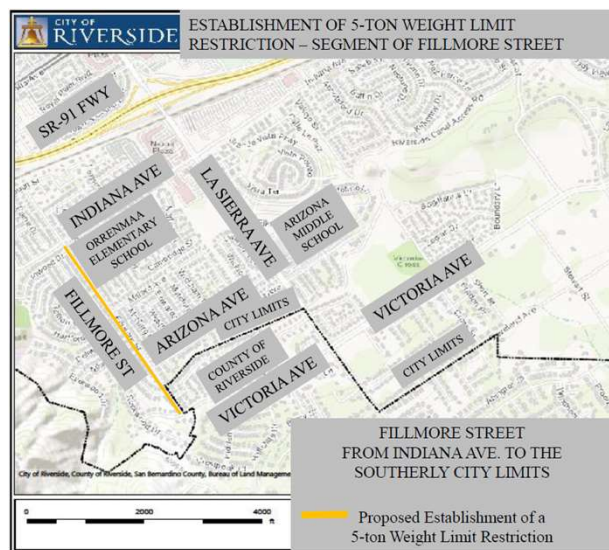
- Residents have reported cut-through truck traffic on Fillmore St. from the southerly City limits to Indiana Ave. believed to be bypassing the existing axle restriction on the parallel segment of La Sierra Ave.
- The Public Works Department may establish weight limit or axle restrictions to prohibit use of select streets by larger commercial vehicles.
- Proposed weight limit restrictions assist in preserving the pavement and may improve safety and reduce noise.



2

RiversideCA.gov

# SITE MAP / AERIAL MAP



RiversideCA.gov

## DISCUSSION

- Public Works is proposing establishment of a 5-ton weight limit restriction on the segment of Fillmore St. from the southerly City limits to Indiana Ave.
- The weight limit restriction is recommended based on the residential nature of this two-lane collector roadway which has single family residential homes situated along the street and encompasses Orrenmaa Elementary School.



4



RiversideCA.gov

# INTENT OF PROPOSED WEIGHT LIMIT RESTRICTION

1. To restrict commercial truck traffic use of Fillmore St. that bypass the existing La Sierra Ave. axle restriction;
2. Improve safety and operations within the neighborhood and adjacent to Orrenmaa Elementary School;
3. Preserve the residential nature of the street and condition of the pavement; and
4. Reduce resulting noise along the street segment.



5



RiversideCA.gov

# COLLABORATION WITH COUNTY OF RIVERSIDE

- The City coordinated with the County of Riverside who has agreed to install advance signage should the proposed weight limit restriction on the designated segment of Fillmore St. be approved.
- The City will fabricate the advance signage which would be installed and subsequently maintained by the County.

## COLLABORATION



Creativity



Teamwork



Partnership



Development



Solution



Communication








6



RiversideCA.gov

## VEHICLE CLASSIFICATIONS

<b>CLASS 1</b>  6,000 LBS & LESS	<b>CLASS 2</b>  6,001 - 10,000 LBS	<b>CLASS 3</b>  10,001 - 14,000 LBS	<b>CLASS 4</b>  14,001 - 16,000 LBS
<b>CLASS 5</b>  16,001 - 19,500 LBS	<b>CLASS 6</b>  19,501 - 26,000 LBS	<b>CLASS 7</b>  26,001 - 33,000 LBS	<b>CLASS 8</b>  33,001 LBS & OVER


7
RiversideCA.gov

## STRATEGIC PLAN ALIGNMENT



**Community Well-Being**  
 Ensure safe and inclusive neighborhoods where everyone can thrive.



**Infrastructure, Mobility & Connectivity**  
 Ensure safe, reliable infrastructure that benefits the community and facilitates connection between people, place and information.

**2.4.** Support programs and innovations that enhance community safety, encourage neighborhood engagement, and build public trust.

**6.2.** Maintain, protect and improve assets and infrastructure within the City's built environment to ensure and enhance reliability, resiliency, sustainability, and facilitate connectivity.

### Cross-Cutting Threads

---

This item aligns with each thread.



Community Trust



Fiscal Responsibility



Sustainability & Resiliency



Equity



Innovation


8
RiversideCA.gov

## RECOMMENDATION

- That the Transportation Board review and recommend that the City Council approve establishment of the proposed 5-ton weight limit restriction on the segment of Fillmore St. from the southerly City limits to Indiana Ave.

