

HOMELESS PROGRAMS AND SERVICES EXPENDITURES FOR FISCAL YEAR 2022/2023

Budget Engagement Commission
November 9, 2023

RiversideCA.gov

1

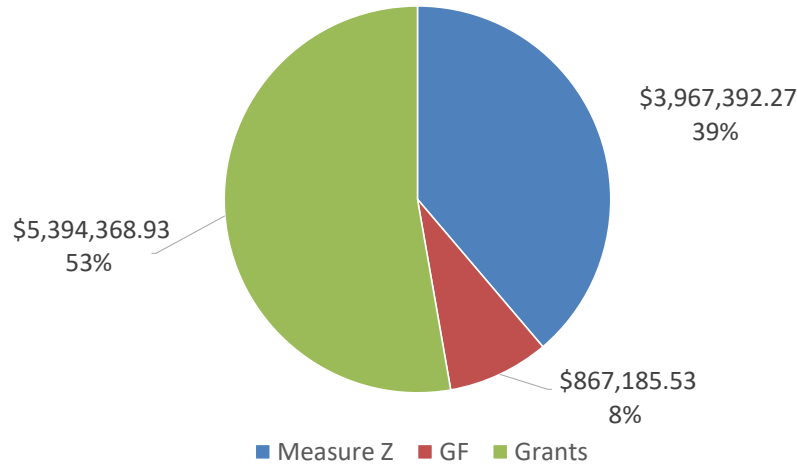
MEASURE Z FUNDED ACTIVITIES

- April 2, 2019: Funded the Public Safety and Engagement Team (PSET)
- May 3, 2022: Expanded PSET to enhance Urban PSET Tam and establish the Wildlands PSET
- June 16, 2022: Redirected PSET RPD funding to Street Medicine
- In 2018, \$500,000 was allocated annually for case management of rental assistance program participants and move-in related costs
- In 2022, \$164,291 was allocated to fund an Office of Homeless Solutions Senior Office Specialist and Project Assistance

2

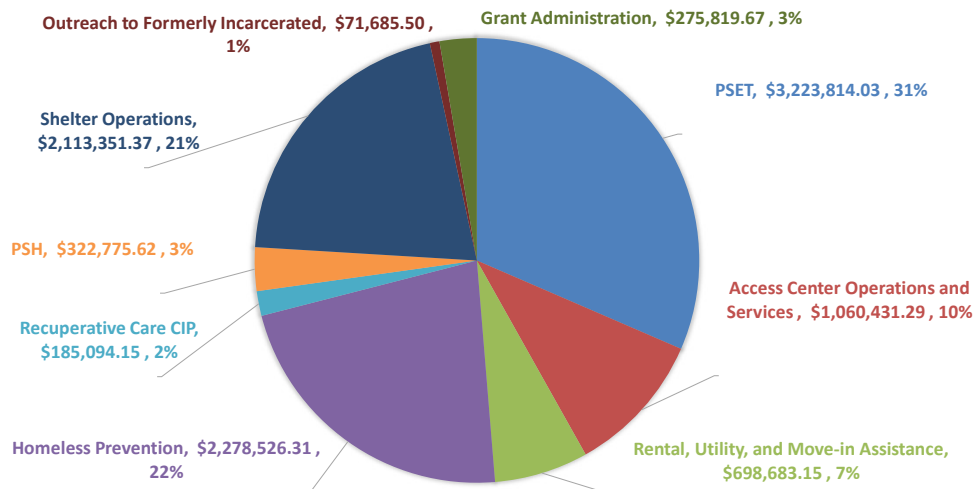
HOMELESS PROGRAMS AND SERVICES EXPENDITURES

Fiscal Year 2022/2023 Funding Sources



3

HOMELESS PROGRAMS AND SERVICES EXPENDITURES FOR FY 2022/2023



4

PUBLIC SAFETY & ENGAGEMENT TEAM

- Measure Z total expenditures: \$3,223,814.03
- 31% of expenditures
- October 2022, Wildlands PSET began operations

PSET	# OF CONTACTS	# ACCEPTED SERVICES	# CODE NOTICES	# CITATIONS	# ARRESTS	# VEHICLES TOWED	TONS REMOVED
Wildlands	583	83	260	5	10	11	192.23
Urban	5,183	691	1,769	192	482	44	491.66
Total	5,766	699	2,029	200	492	85	683.99

5

ACCESS CENTER OPERATIONS AND CLIENT SERVICES

Budget

- Total expenditures: \$1,060,431.29
- ✓ General Funds: \$867,185.53
- ✓ Grant funds: \$123,555.76

Performance Outcomes

- Total duplicated engagements: 2,310
- Total street exits by referrals: 237
- Total consumers accepted services: 1,660
- Total trip homes: 13



6

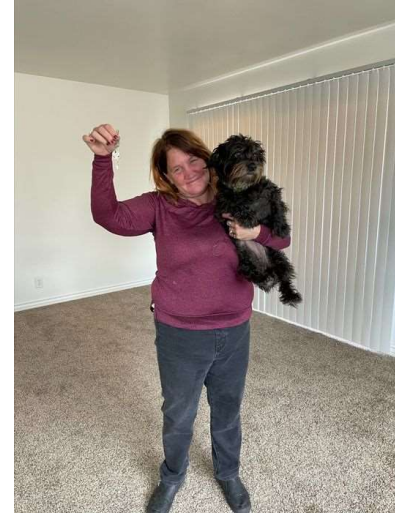
RENTAL, UTILITIES, AND MOVE-IN ASSISTANCE

Budget

- Total expenditures: \$698,683.15
- ✓ Measure Z funds: \$366,754.09
- ✓ Grant funds: \$123,555.76

Performance Outcomes

- Case managed 61 housed clients
- Paid for 9 rental application fees
- Provided 42 households with rental assistance
- Provided 19 households with utility assistance
- Purchased refrigerators, stoves, and beds for 42 households
- Provided 13 property owners with landlord incentive payments



7

HOMELESS PREVENTION

- Total grant expenditures: \$2,278,526.31
- Assisted 367 low-income renters with past due rent, forward rent and/or past due utilities



8

OFFICE OF HOMELESS SOLUTIONS EXPANSION

- Measure Z total expenditures: \$12,890.40
- Funded a Senior Office Specialist and Project Assistant positions
- Positions have been moved to the Department of Housing and Human Services, Administrative Division

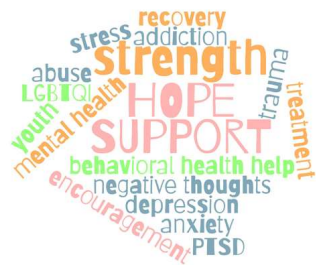


9

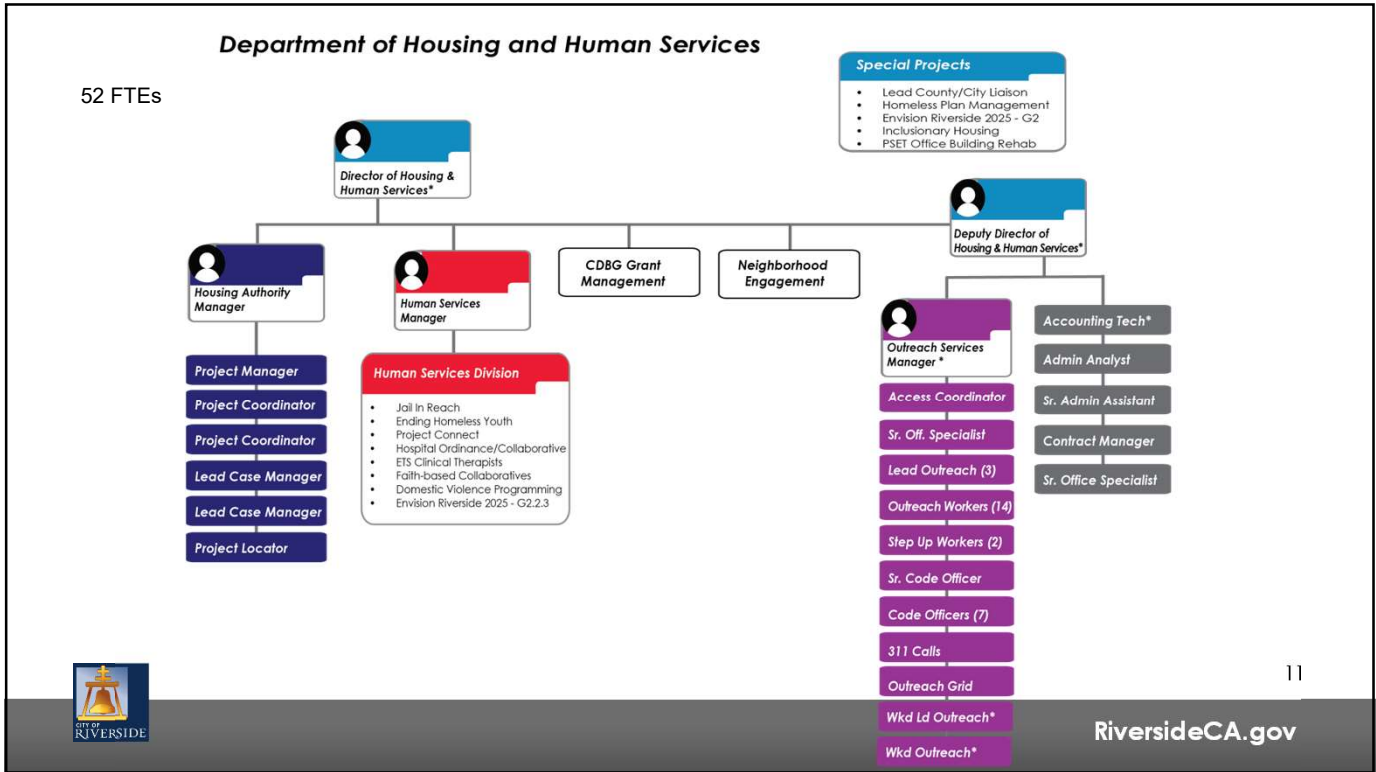
STREET MEDICINE

9/25/23, Housing and Homelessness Committee conceptually approved the reallocation of funding to:

- (1) Two (2) Substance Abuse Counselors
- (2) Two (2) Behavioral Health Specialists



10



11

FOCUS ON AFFORDABLE HOUSING AND HOMELESS RESOURCES

Housing First Strategy

A Road Map to Create, Implement, and Operate a Housing First Approach in the City of Riverside

City Council Meeting: Tuesday, March 13, 2018

HOMELESSNESS ACTION PLAN

RiversideCA.gov/HomelessSolutions
Adopted on Tuesday, October 11, 2022

12

RiversideCA.gov

12

HOMELESSNESS ACTION PLAN GOALS



Increase Housing Production With a Focus on Affordability

01



Emergency Shelter

04



Increase Availability of Services

02



Expand Public Awareness

05



Prevent Homelessness

03



Coordinated Regional Infrastructure

06

ADOPTED ON OCTOBER 11, 2022

HOUSING POLICIES AND PROGRAMS



City of Riverside
HOUSING ELEMENT
SIXTH CYCLE 2021-2029

Housing & Human Services Department



Affordable Housing



Housing Rehabilitation Program




Riverside Access Center



Rental Assistance



Homeless Prevention



Outreach



EASTSIDE CLIMATE COLLABORATIVE
CITY OF RIVERSIDE



Bridge Housing



Entitlement Grants

15

HULEN HOMELESS SERVICE CAMPUS



The Place
PSH units



28 recuperative care beds



Bridge Housing
23 non-congregate shelter beds




Emergency Shelter
90 congregate shelter beds



Medical Services

16

RECOMMENDATION

That the Budget Engagement Commission receive a presentation on homeless programs and services expenditures report for fiscal year 2022/2023.



17

RiversideCA.gov