



ELEVENTH STREET – REMOVAL OF PREFERENTIAL PARKING ZONES

Public Works Department

Meeting

Transportation Board: July 3, 2024

BACKGROUND

1. The Preferential Parking Zone (PPZ) Program is neighborhood-driven and enables eligible residential neighborhoods continually impacted by outside parking sources to pursue establishment of PPZs
2. PPZs increase availability of on-street parking for residents and their guests by requiring parked vehicles to display a PPZ permit during restricted days / times
3. PPZ permit applications cost \$42 per household for a three-year period, covering all currently registered vehicles at the home along with two guest permits

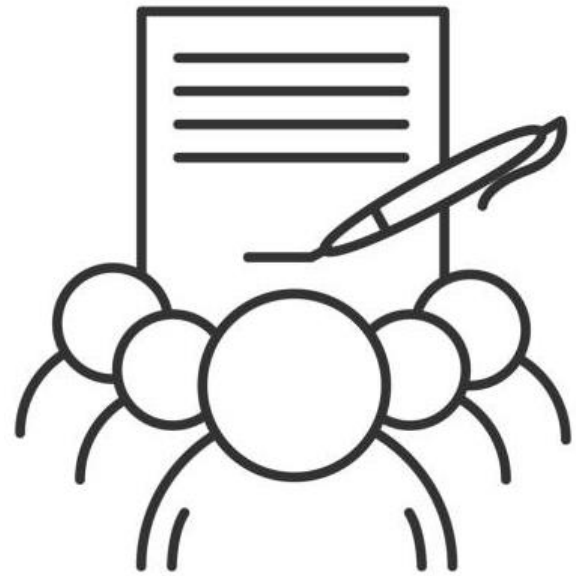


DISCUSSION

1. Two existing adopted PPZs are in place on Eleventh Street including:

- a. “No Parking Any Time” PPZ on the south side of Eleventh St. from Redwood Drive to Pine Street; and
- b. “No Parking between the hours of 9:00 p.m. to 5:00 a.m.” PPZ on the north side of Eleventh Street from Pine Street to Redwood Drive; and

2. Public Works received a petition from 88% (15 of 17) of residents within the established PPZ’s on Eleventh Street from Redwood Drive to Pine Street requesting removal of both PPZ’s.



DISCUSSION (CONTINUED)

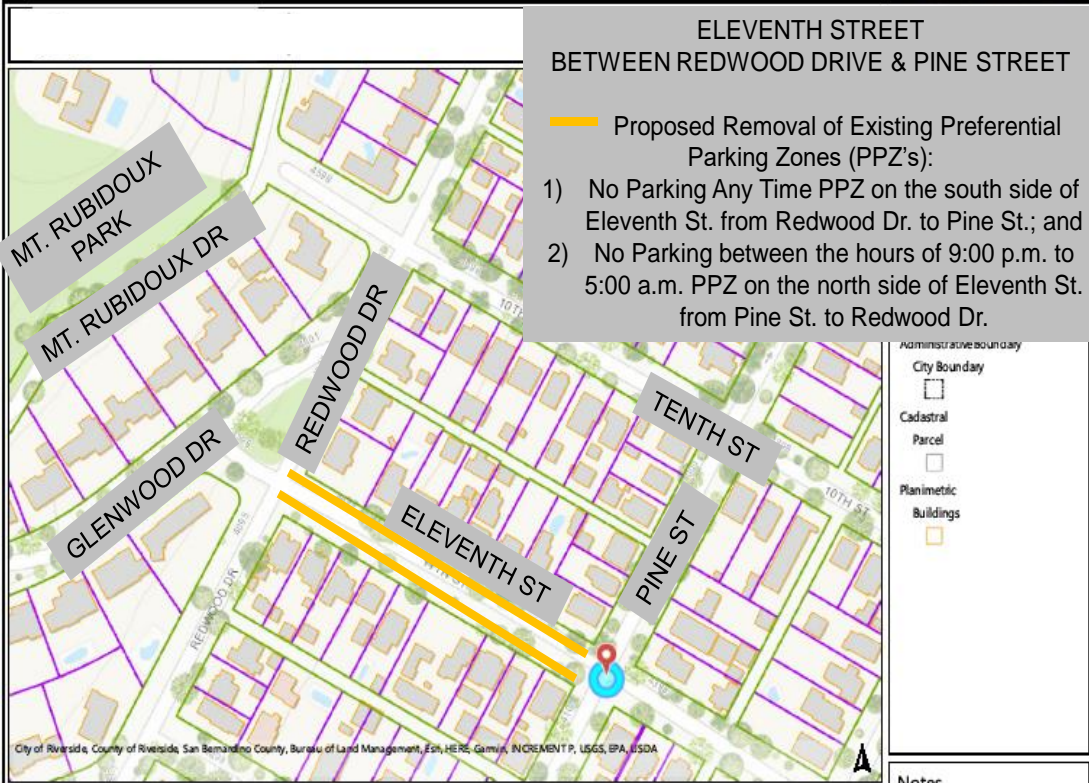
1. Residents indicate that the existing PPZ is:
 - a) No longer needed since Ryan Bonaminio Park was constructed and serves Mt. Rubidoux hikers;
 - b) Restrictive to freedom and flexibility;
 - c) Inconvenient limiting ability to host guests and move resident vehicles; and
 - d) Financially burdensome.



SITE & AERIAL MAPS

ELEVENTH STREET BETWEEN REDWOOD DRIVE & PINE STREET

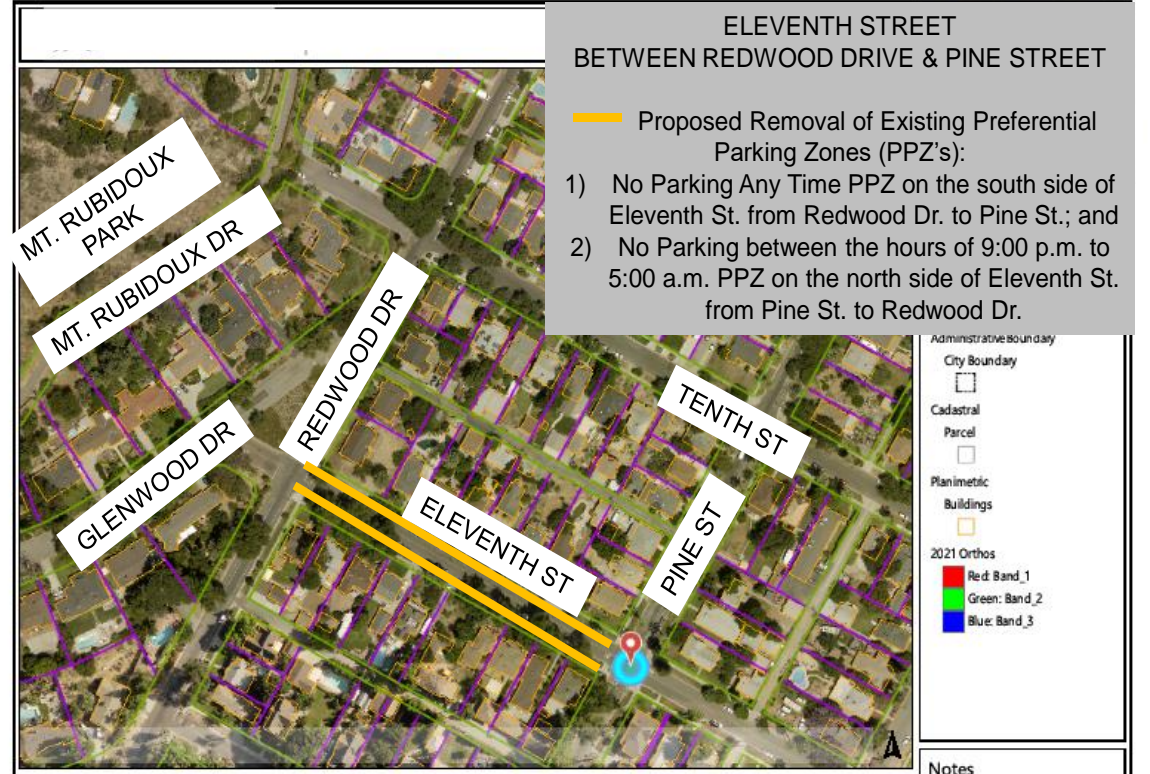
- Proposed Removal of Existing Preferential Parking Zones (PPZ's):
- 1) No Parking Any Time PPZ on the south side of Eleventh St. from Redwood Dr. to Pine St.; and
 - 2) No Parking between the hours of 9:00 p.m. to 5:00 a.m. PPZ on the north side of Eleventh St. from Pine St. to Redwood Dr.



Notes
This map is a user generated static output from an internet mapping site and is for reference only. Data layers that appear on this map may or may not be accurate, current, or otherwise reliable.
THIS MAP IS NOT TO BE USED FOR NAVIGATION

ELEVENTH STREET BETWEEN REDWOOD DRIVE & PINE STREET

- Proposed Removal of Existing Preferential Parking Zones (PPZ's):
- 1) No Parking Any Time PPZ on the south side of Eleventh St. from Redwood Dr. to Pine St.; and
 - 2) No Parking between the hours of 9:00 p.m. to 5:00 a.m. PPZ on the north side of Eleventh St. from Pine St. to Redwood Dr.



Notes
This map is a user generated static output from an internet mapping site and is for reference only. Data layers that appear on this map may or may not be accurate, current, or otherwise reliable.
THIS MAP IS NOT TO BE USED FOR NAVIGATION

STRATEGIC PLAN ALIGNMENT



Infrastructure, Mobility & Connectivity

Ensure safe, reliable infrastructure that benefits the community and facilitates connection between people, place and information.

- 2.4 “Support programs and innovations that enhance community safety, encourage neighborhood engagement, and build public trust.”

Cross-Cutting Threads

This item aligns with these threads.



Community Trust



Fiscal Responsibility



Equity

RECOMMENDATION

That the Transportation Board recommend that the City Council approve:

1. Removal of the existing “No Parking Any Time, except for residents with permits” Preferential Parking Zone (PPZ) on the south side of Eleventh Street from Redwood Drive to Pine Street; and
2. Removal of the existing “No Parking between the hours of 9:00 p.m. to 5:00 a.m., except for residents with permits” PPZ on the north side of Eleventh Street from Pine Street to Redwood Drive.