



First Street (1st St) Proposed Speed Humps

Public Works Department

City Council
January 27, 2026

RiversideCA.gov

BACKGROUND

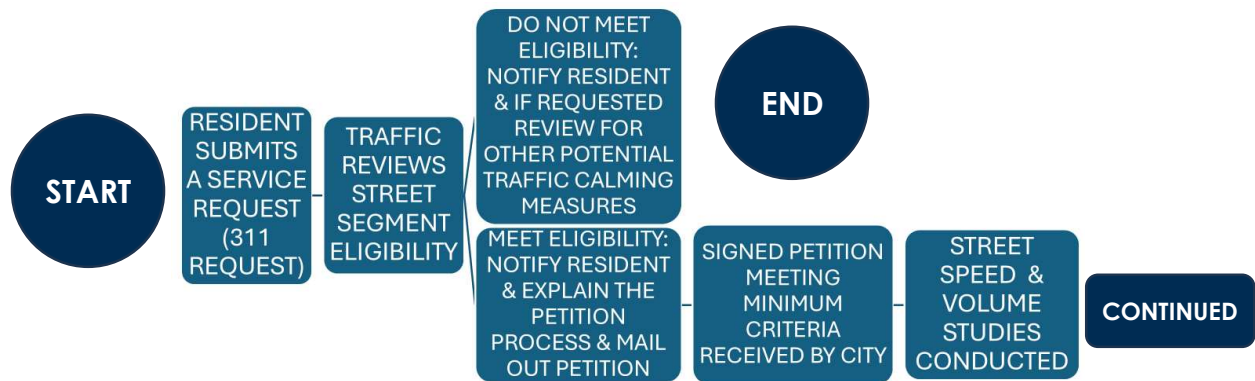
1. Neighborhood Traffic Management Program(NTMP) includes the traffic calming tools for various road types.
2. In 2014, use of speed humps were discontinued.
3. In May of 2024, the City Council reinstated the use of speed humps as one of the alternatives in the secondary options of the NTMP.



2

RiversideCA.gov

SPEED HUMP PROCESS



3

RiversideCA.gov

SPEED HUMP PROCESS



*Note: If an appeal is denied, alternative measures and/or enforcement may be considered



4

RiversideCA.gov

LOCATION MAP

Request for speed humps along First Street between Mulberry Street and Main Street.



5



RiversideCA.gov

STREET VIEW PHOTOS / EXISTING CONDITIONS



Westbound First St at its intersection with Mulberry St

Eastbound First St at its intersection with Main St



RiversideCA.gov

SPEED HUMP CRITERIA CHECKLIST

PETITION REQUIREMENTS	DATA	CONFORMANCE		
		YES	NO	COMMENTS
Petition contains: ► Signatures from a minimum of 70% of adjacent residents indicating support for speed hump installation (each parcel represents one vote)	17 of 22	X		77%

Other Conditions (Fire Department, Ward location):	Ward 1 Location	RFD request – Speed Hump Type II (Plan 251)
Collision History Review:	2020 - 2025	12 collisions – 1 unsafe speed collision
Special Circumstances:		

QUALIFYING & TRAFFIC DATA CRITERIA ALL 8 MUST BE MET				
1. The street segment must be a local residential street with no more than one lane in each direction and a minimum of ¼ mile in length.	1540' (0.29 mi)	X		1360' residential (0.25 mi)
- 13 or more buildings fronting one side of the street or 16 or more buildings fronting both sides of the street				
2. The legal speed limit is 25 MPH	25 MPH posted	X		
3. Street width may not exceed 40 feet	36'	X		
4. Street does not have a vertical grade of 8% or greater		X		Max grade 1.6%
5. Street is not a cul-de-sac under 800 feet in length		X		
6. Minimum average daily traffic volume of 750 vehicles	1106 ADT	X		8/21/2025
7. Maximum average daily traffic volume of 1,999 vehicles	1137 ADT	X		8/20/2025
8. Minimum combined 85 th speed of 37 MPH	35 MPH		X	Range 34-35
SUMMARY – ARE ALL 8 ABOVE CONDITIONS SATISFIED?			X	7 out of 8

Traffic Count Data:

*1106-1137 Average Daily Traffic (ADT)

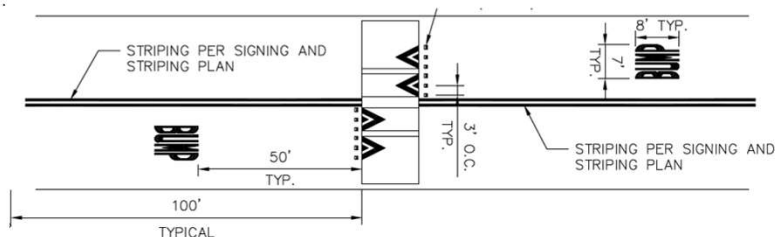
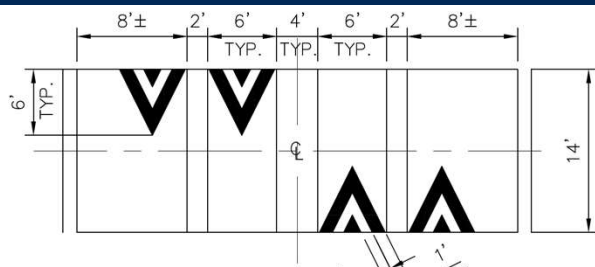
*34-35 Miles Per Hour (MPH) speed survey

7



RiversideCA.gov

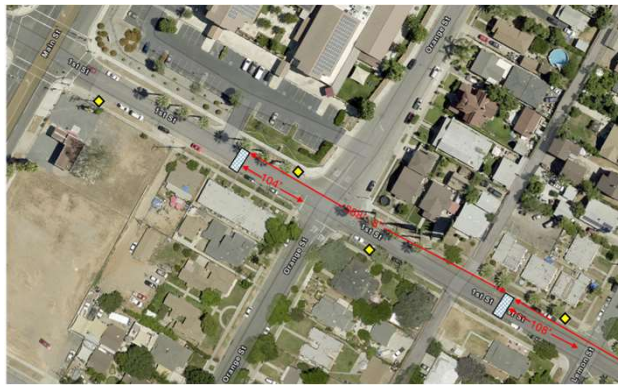
SPEED HUMP (TYPE II) PROPOSED





*Based on Fire Dept request, utilize Speed Hump (Type II) 8

RiversideCA.gov

PROPOSED SPEED HUMP LOCATIONS



-  Potential Speed Hump Locations (x4)
-  Potential Sign Locations (x8)



RiversideCA.gov

DISADVANTAGES OF SPEED HUMPS

Disadvantages of speed humps include:

- Capital cost (minimum 2 to 4 speed humps per street);
- Tendency to speed in between humps;
- Noise from braking
- Potential delays to emergency vehicle response times (use Type II)
- Diversion of traffic



10



RiversideCA.gov

ADVANTAGES OF SPEED HUMP INSTALLATIONS

Vehicle Speed Reductions in the range of 5mph-13mph

Countermeasure	Safety Focus	Area	Roadway	Reference	Sites	Speed Limit (mph)	Volume (vpd)		Mean Speed (mph)			85 th %tile Speed (mph)			Change	Period	Location	Notes
							Before	After	Before	After	Change	Before	After	Change				
Vertical Deflections Within the Roadway																		
Speed Hump—rounded, raised area placed across the roadway, typically 12 to 14 feet long	pedestrian	urban	local	1 (1999)	178	—	48 to 11544	46 to 110443	—	—	—	35	27	-8	—	various		
	pedestrian	urban	local	2 (2005)	7	—	400 to 4362	401 to 3384	—	—	—	32	26	-6	—	VA		
	pedestrian	urban	local	3 (2000)	4	—	475 to 1506	433 to 1343	—	—	—	36	31	-5	—	WA		
	pedestrian	urban	local	4 (2005)	1	25	1300	—	22	23	1	37	29	-8	1-mon	FL		
	pedestrian	rural/urban	local	5 (2002)	3	25	218 to 746	—	24	18	-6	28	22	-6	1-mon	IA		
	pedestrian	urban	—	1 (1999)	4	—	—	—	—	—	—	36	29	-7	—	—	with speed table	
	pedestrian	urban	—	1 (1999)	2	—	2456 to 3685	2593 to 2931	—	—	—	38	25	-13	—	—	with choker	

Source: Federal Highway Administration (FHWA) Engineering Speed Management Countermeasures, 2014.



11

RiversideCA.gov

NEIGHBORHOOD TRAFFIC MANAGEMENT PROGRAM

LOCAL STREET (40' width residential, 2 lane, <2,000 volume, 25 mph max. speed limit)

Initial Options:

Informational Brochure Mailed
 Radar Trailer Deployment
 Changeable Message Board Display
 Speed Limit Signs
 Timed Parking Restrictions
 Preferential Parking Zones
 Red Curb
 Targeted Police Department Enforcement
 Parking Enforcement

Secondary Options: (if Initial unsuccessful)

Center line Striping/Raised Reflective Markers
 Curve Warning Signs
 Stops Signs
 Truck Prohibition Signs
 Turn Prohibition Signs
 Street Narrowing by Striping
 Speed Feedback Signs
 Speed Humps
 Street Closures



12

RiversideCA.gov

TRANSPORTATION BOARD RECOMMENDATIONS

On December 3, 2025, the Transportation Board (Board) reviewed this matter; eight members were present. Staff recommended denial of the speed humps based on established criteria; however, the denial was appealed by residents on First Street. After a thorough discussion, the Board ultimately voted unanimously to recommend approval of the proposed speed humps along First Street between Mulberry Street and Main Street.



13

RiversideCA.gov

RECOMMENDATIONS

That the City Council approve the request for speed humps on First Street between Mulberry Street and Main Street in support of the Transportation Board's recommendations.



14

RiversideCA.gov