

REAL TIME CRIME CENTER

Riverside Police Department

Budget Engagement Commission
May 9, 2024

RiversideCA.gov

1

BACKGROUND



A Real Time Crime Center (RTCC) is where an agency combines public safety best practices with state-of-the-art artificial intelligence technology to protect and increase the security of its community.

2



RiversideCA.gov

2

BACKGROUND

Initially designed as centralized and integrated video surveillance units where public safety staff would physically sit and comb through massive amounts of video footage.

Today RTCC software can use AI to pull video footage from multiple platforms for real time video surveillance and analysis with a single access point for users.



3

RiversideCA.gov

3

BACKGROUND

INCREASING COSTS

1200 city-owned cameras costing an average of \$5,000 each

+

State law requiring 12 months of surveillance video storage

+

Maintenance, vandalism, and expanding needs



4

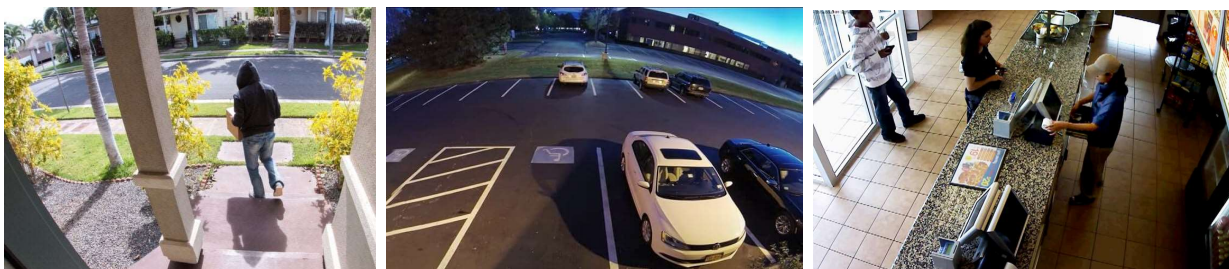
RiversideCA.gov

4

BACKGROUND

RCCT technology minimizes cost by accepting footage from:

- City owned cameras
- Proprietary non-City owned cameras
- Privately owned cameras when "**opted-in**" to the program



5

RiversideCA.gov

5

DISCUSSION

RTCCs can be found across the nation and are able to centralize various technologies, coordinate personnel and direct resources to active crimes in progress and large-scale or high-profile public events that might require a police presence.



6

RiversideCA.gov

6

DISCUSSION

RTCCs are fully customizable to the needs of the City but at their core are comprised of 2 key components:

1. Equipment

- Use existing RPD configurations
- Little equipment outlay required upfront
- Vendor expected to provide some equipment



7

RiversideCA.gov

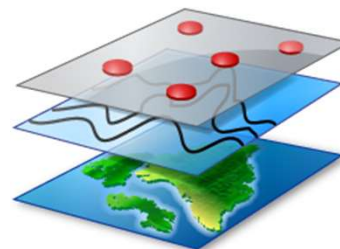
7

DISCUSSION

2. RTCC Software System

The software system will bring together the following existing City technologies into a single access point:

- **Mapping:** Visualizing events, alerts, and video footage geospatially on maps and dashboards accelerates response coordination. Operators can clearly see relationships and clusters of activity.



8



RiversideCA.gov

8

DISCUSSION

- **9-1-1 or Computer-Aided Dispatch (CAD):** system integrate with City owned and privately shared video surveillance systems to map calls in real-time and view live video feeds in the area as incidents unfold.



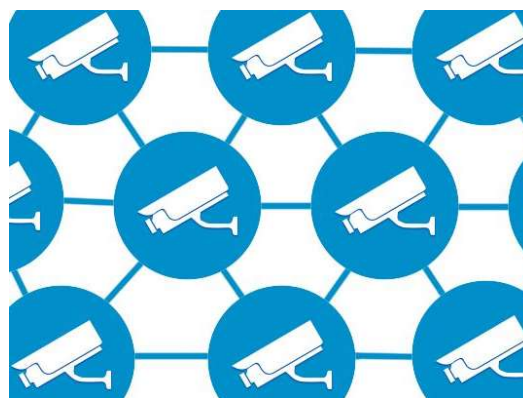
9

RiversideCA.gov

9

DISCUSSION

- **City owned IP Cameras:** A network of cameras provides 24/7 live monitoring and recording capabilities. Camera networks can give situational awareness across all city areas including transit hubs, event venues, shopping districts, and other hot spots.



10

RiversideCA.gov

10

DISCUSSION

- **Private Cameras:** Residents and businesses opt-in to participate in the City's real time crime center.



11



RiversideCA.gov

11

DISCUSSION

RTCCs have numerous proven benefits including:

1. Quicker response times
2. Enhanced situational awareness and safety of police officers in the field
3. Better operational command
4. Improved emergency response capabilities
5. Allowing officers to stop crimes in progress
6. Helping to lower crime rates
7. Allowing for swift apprehension of suspects, and
8. Improving the overall sense of safety in the community.

12



RiversideCA.gov

12

STRATEGIC PLAN ALIGNMENT

Strategic Priority 2 – Community Well-Being

- Goal 2.4 – Support programs and innovations that enhance community safety, encourage neighborhood engagement, and build public trust.

Cross-Cutting Threads



Community Trust



Fiscal Responsibility



Sustainability &
Resiliency



Equity



Innovation



13

RiversideCA.gov

13

RECOMMENDATIONS

That the Budget Engagement Commission:

1. Discuss the allocation of Measure Z Funds in an amount estimated up to \$200,000 in fiscal year 2024/25 and \$175,000 annually thereafter for the implementation of a Real Time Crime Center; and
2. Recommend the City Council approve the allocation of Measure Z Funds in an amount up to \$200,000 in fiscal year 2024/25 and \$175,000 annually thereafter for the implementation of a Real Time Crime Center.



14

RiversideCA.gov

14