



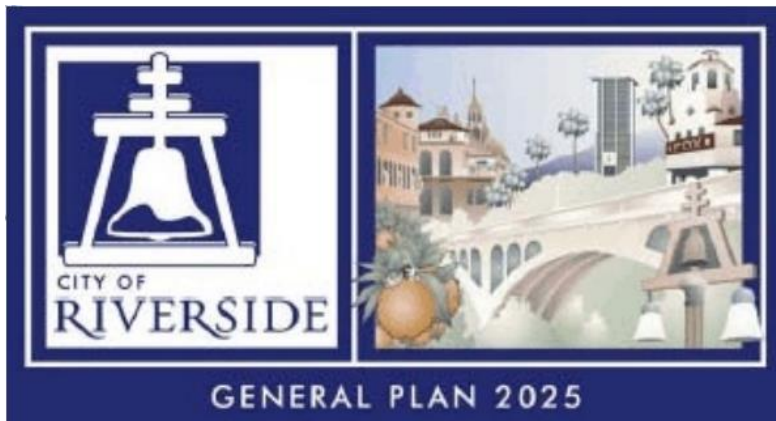
Traffic Engineering Division

Public Works Department

Presentation for Commission of the Deaf
9/13/2023

TRANSPORTATION MASTER PLAN DOCUMENTS

General Plan



Riverside P.A.C.T.

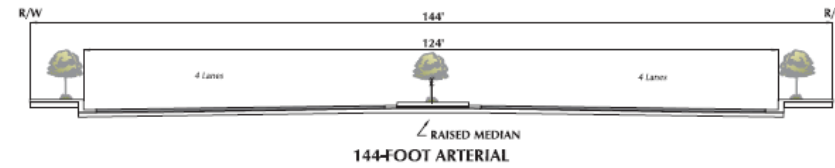
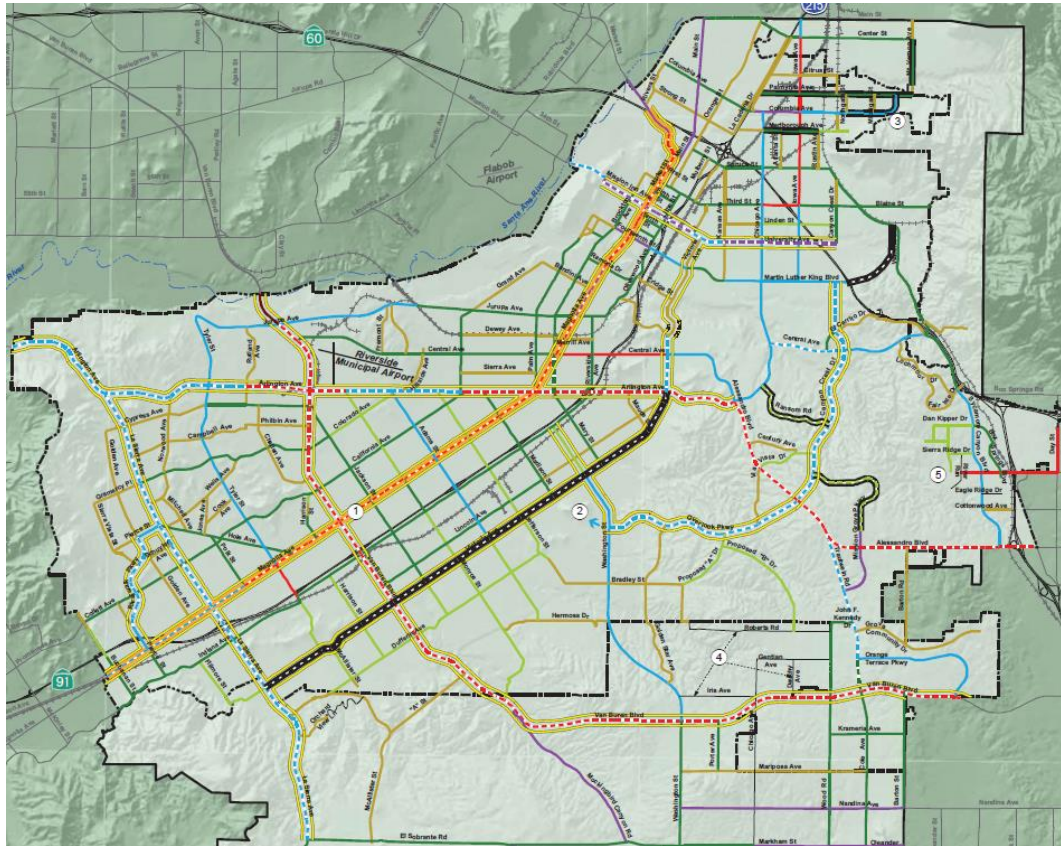


Local Roadway Safety Plan (LRSP)

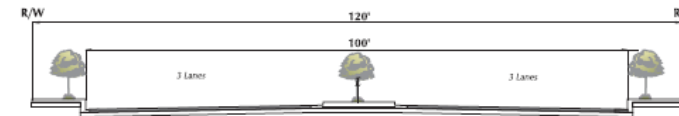


RIVERSIDE GENERAL PLAN (2007)

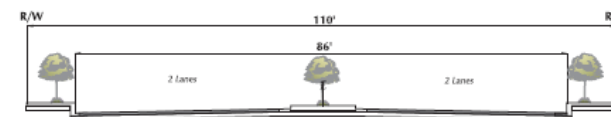
Master Plan of Roadways & Typical Cross Sections Circulation & Community Mobility Element



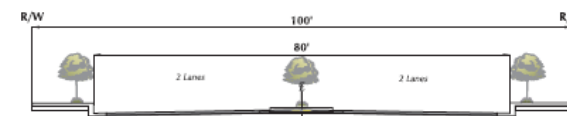
RAISED MEDIAN
144-FOOT ARTERIAL



RAISED MEDIAN
120-FOOT ARTERIAL



RAISED MEDIAN
110-FOOT ARTERIAL

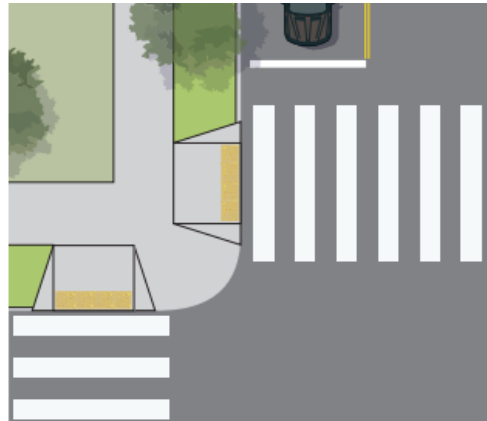


100-FOOT ARTERIAL



RIVERSIDE P.A.C.T. (2021)

Pedestrian Target Safeguarding Plan
Active Transportation Plan
Complete Streets Ordinance
Trails Master Plan



CLASS I - SHARED USE PATH



CLASS II - BIKE LANE



CLASS III - BIKE ROUTE



CLASS IV - CYCLE TRACK



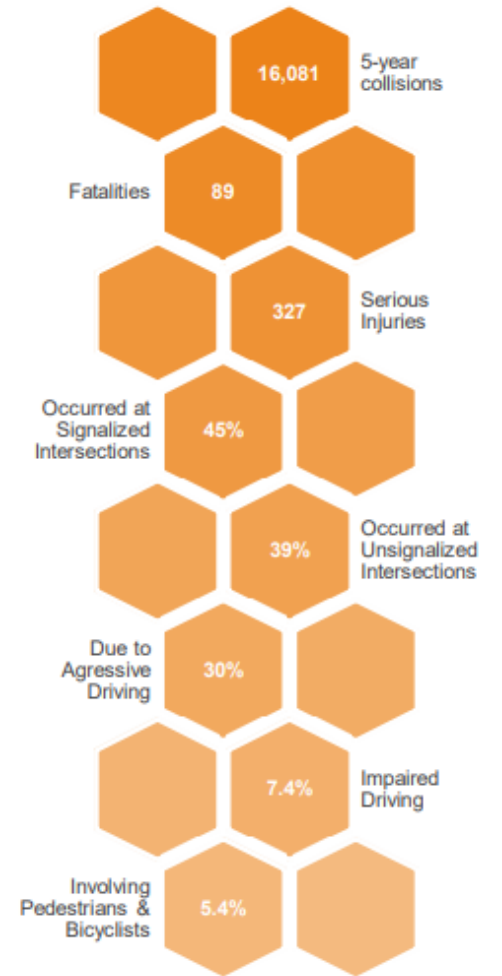
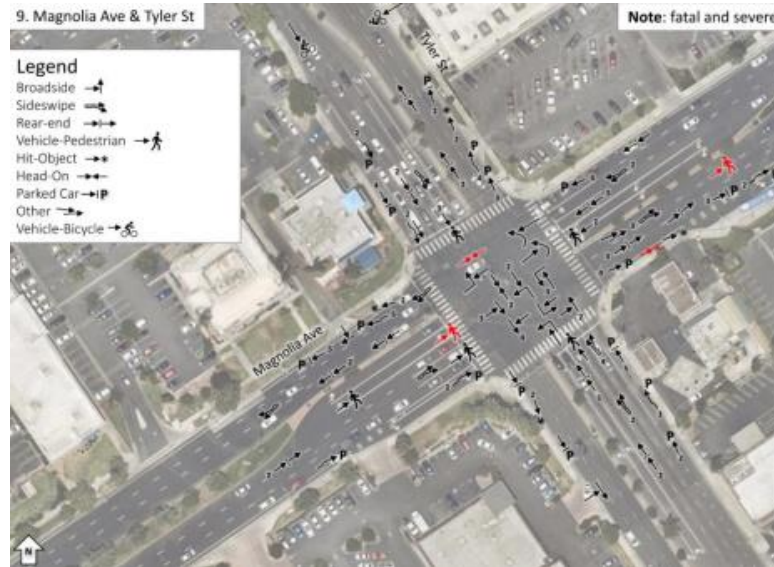
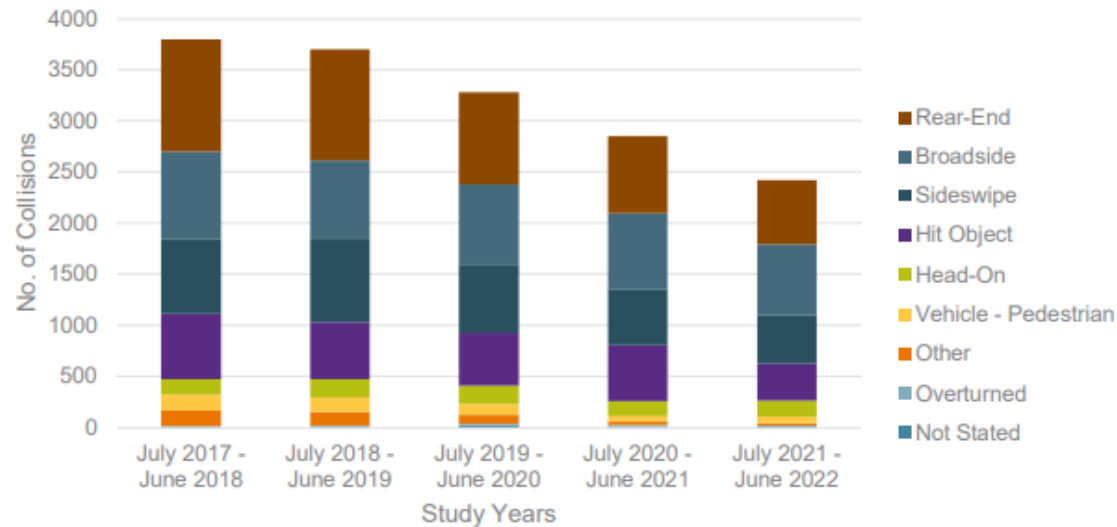
LOCAL ROADWAY SAFETY PLAN (2022)

2022 Local Roadway Safety Plan (LRSP):

- Citywide collision analysis 2017-2022
- Emphasis Areas / Case Studies / Toolbox

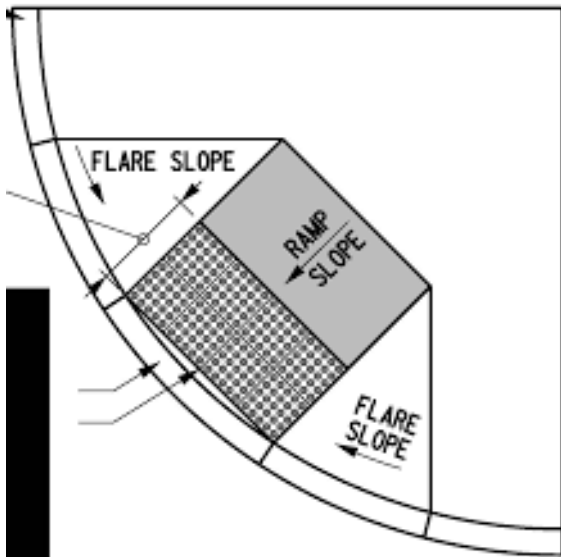
VISION: To enhance the transportation network for all users to move towards zero traffic fatalities and serious injuries

Figure 7 – Collision Type by Year (2017-2022)



AWARDED TRANSPORTATION GRANTS

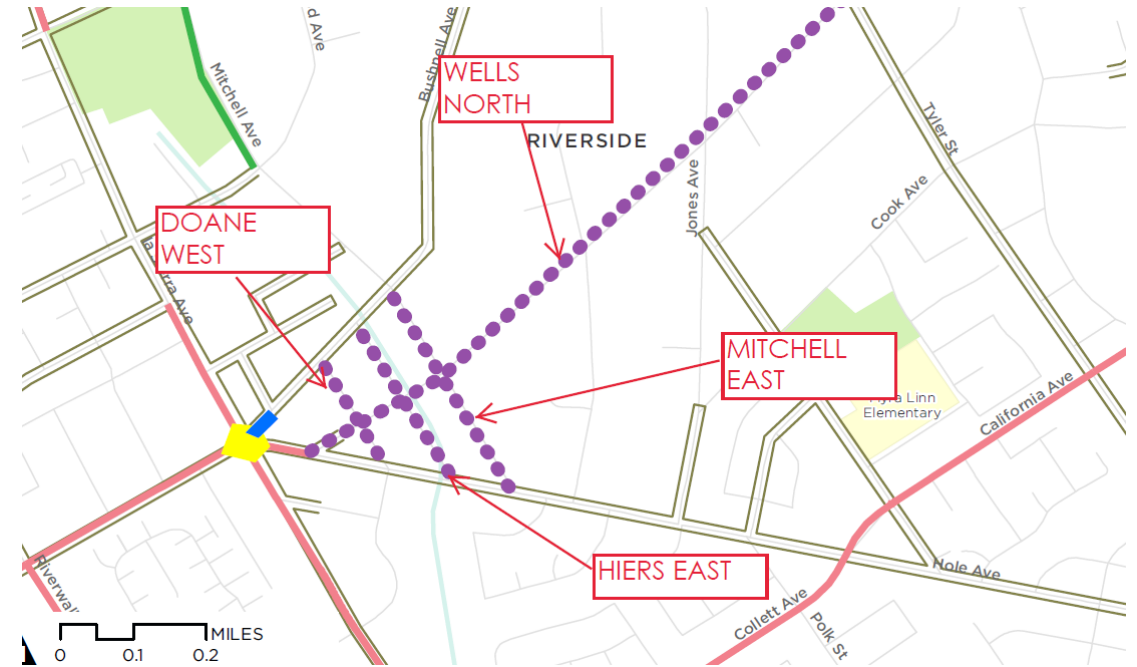
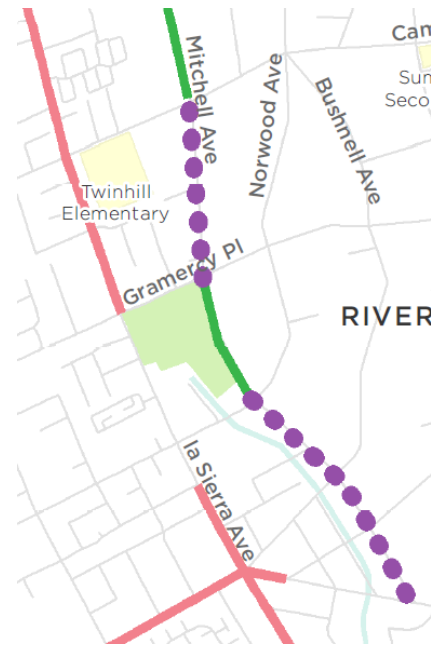
- **2017 (HSIP CYCLE 8)** - Citywide Traffic Controller Replacement
- **2021 SB 821** - LED Flashing Stop Signs, curb ramps, Xwalks



AWARDED TRANSPORTATION GRANTS

2022 Active Transportation Program (ATP) Cycle 6 :

- Five Points Neighborhood Pedestrian Safety Improvements
- Mitchell Avenue Sidepath Sidewalk



AWARDED TRANSPORTATION GRANTS

Highway Safety Improvement Program **2022 (HSIP) Cycle 11** - Citywide Improvements at Traffic Signalized Locations:

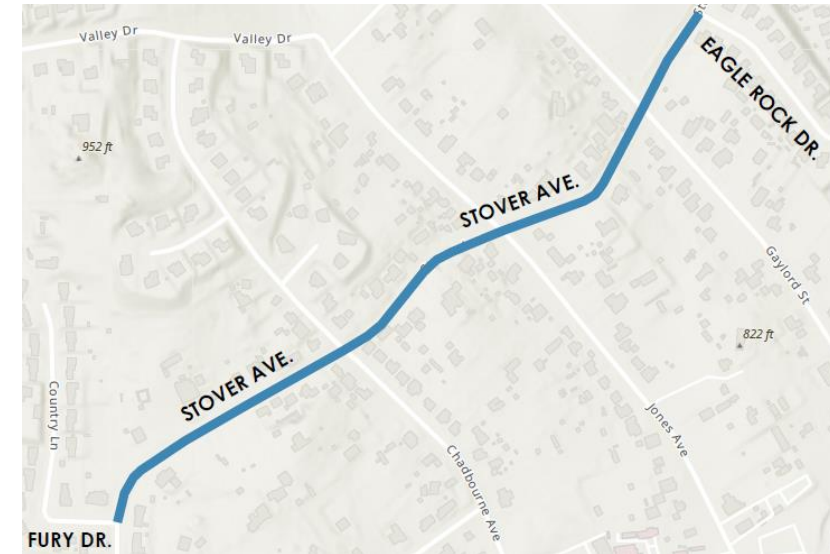
- Mission Inn Ave Median
- Retro-reflective Signal Backplates
- Leading Pedestrian Interval (LPI)



WARD 7 AWARDED GRANTS (UPCOMING PROJECTS)

2023 Senate Bill (SB) 821 Pedestrian & Bicycle Infrastructure Improvement Grant (Stover sidewalk/ramp):

- 24 intersection locations



NEIGHBORHOOD TRAFFIC MANAGEMENT PROGRAM

LOCAL STREET (40' width residential, 2 lane, <2,000 volume, 25 mph max. speed limit)

Initial Options:

Informational Brochure Mailed
Radar Trailer Deployment
Changeable Message Board Display
Speed Limit Signs
Timed Parking Restrictions
Preferential Parking Zones
Red Curb
Targeted Police Department Enforcement
Parking Enforcement

Secondary Options: (if Initial unsuccessful)

Center line Striping/Raised Reflective Markers
Curve Warning Signs
Stops Signs
Truck Prohibition Signs
Turn Prohibition Signs
Street Narrowing by Striping
Speed Feedback Signs
Speed Humps
Street Closures

COLLECTOR STREET (44-64' width, 2-4 lanes, >2,000 volume, 25-40 mph speed limit)

Initial Options:

Radar Trailer Deployment
Changeable Message Board Display
Timed Parking Restrictions
Red Curb
Targeted Police Department Enforcement
Parking Enforcement

Secondary Options: (if Initial unsuccessful)

Center line Striping/Raised Reflective Markers
Curve Warning Signs
Truck Prohibition Signs
Two-Way Left Turn Lane to Narrow Road
Medians, Angle Parking to Narrow Road
Speed Feedback Signs

ARTERIAL STREET (64-120' width, 4-6 lanes, >5,000 volume, 40+ mph speed limit)

Initial Options:

Radar Trailer Deployment
Changeable Message Board Display
Timed Parking Restrictions
Red Curb
Targeted Police Department Enforcement
Parking Enforcement

Secondary Options: (if Initial unsuccessful)

Center line Striping/Raised Reflective Markers
Curve Warning Signs
Truck Prohibition Signs
Two-Way Left Turn Lane to Narrow Road
Medians, Angle Parking to Narrow Road
Speed Feedback Signs



INTERSECTION LEVEL IMPROVEMENTS



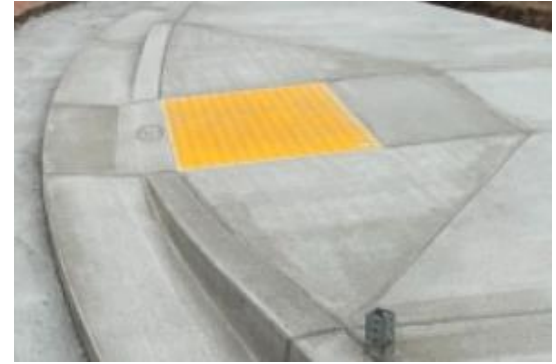
LED Stop Sign



R.R.F.B.



High Visibility Xwalk



ADA Curb Ramp



L.P.I.



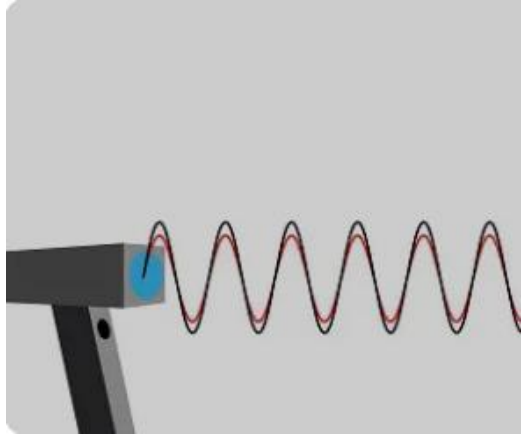
Neighborhood Traffic Circle



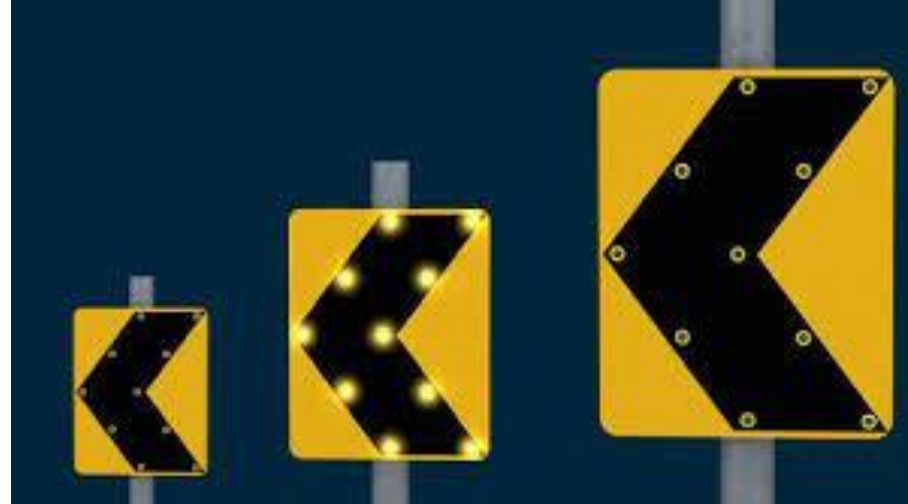
A.P.S.



ROADWAY IMPROVEMENTS



Spot Police Enforcement



LED Chevron Signs



In-Pavement Lighting



Speed Radar Trailers



Speed Feedback Signs

Thank you!

Any questions?

