

CHANGES TO MUNICIPAL STORMWATER PERMIT

PUBLIC WORKS DEPARTMENT

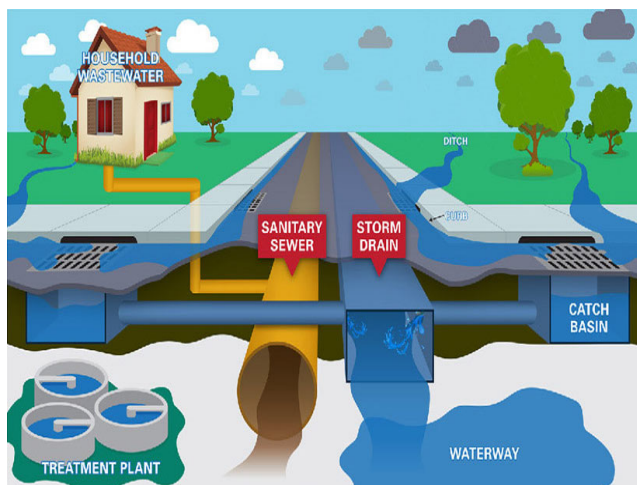
MOBILITY AND INFRASTRUCTURE COMMITTEE
MARCH 14, 2024

RiversideCA.gov

1

MUNICIPAL STORMWATER (MS4) PERMIT

1. 1972-Clean Water Act established NPDES Permit Program
2. 1987-Amendments requiring Municipal Permits
3. Riverside County Permits in 1990, 1996, 2002, 2010



2



RiversideCA.gov

2

MS4 PERMIT (CONT)

1. Illicit Connections/Illegal Discharge Elimination Program
2. Development – Minimize Water Quality Impacts
3. Construction Inspection Program
4. Industrial/Commercial Inspection Program
5. Residential Program
6. Municipal Facilities and Storm Drain Infrastructure
7. Public Education
8. TMDL Compliance



3

RiversideCA.gov

3

PRINCIPAL PERMITTEE - RCFCWCD

Special thanks to Riverside County Flood Control and Water Conservation District for their partnership:

1. Richard Boon - Watershed Division Chief
2. Rohini Mustafa – Engineering Project Manager
3. Aldo Licitra – Permit Manager

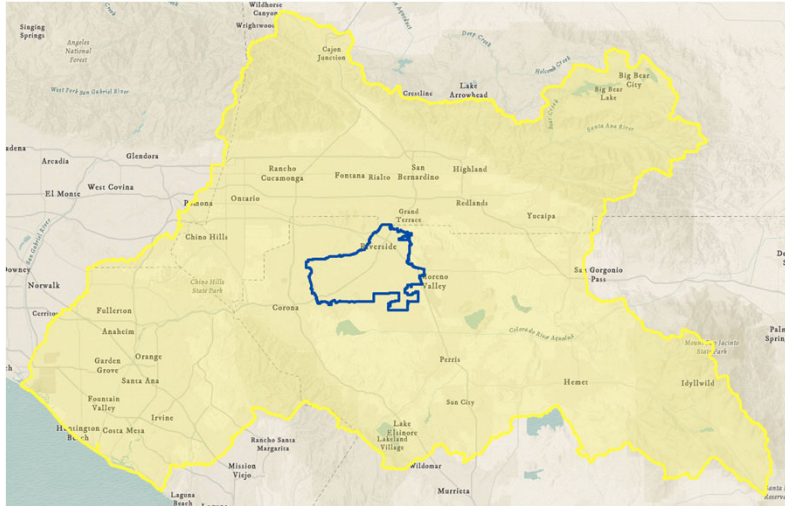


4

RiversideCA.gov

4

SANTA ANA WATERSHED

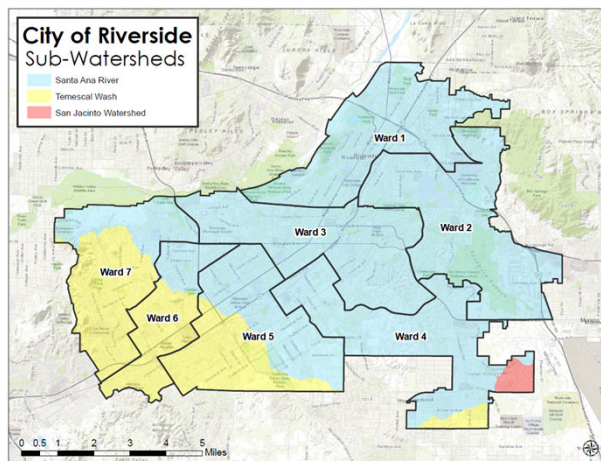


5

RiversideCA.gov

5

SANTA ANA RIVER



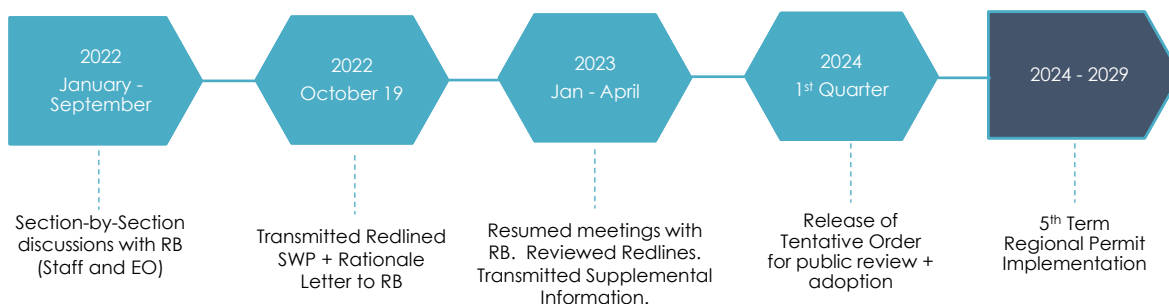
6

RiversideCA.gov

6

STAFF WORKING PROPOSAL

1. Regional Permit-Riverside, San Bernardino, & Orange Counties
2. Draft released December 24, 2021



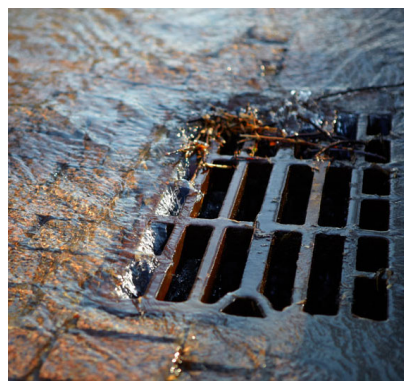
7

RiversideCA.gov

7

REGIONAL PERMIT CHANGES

1. Incremental Changes
2. State Trash Amendments
3. New Development
4. Total Maximum Daily Load (TMDL)
5. Watershed Management Plans (WMP)



8

RiversideCA.gov

8

INCREMENTAL CHANGES

1. Increased inspections for industrial and commercial businesses and construction sites
2. Increased training of City staff of multiple departments
3. Improved tracking of various stormwater metrics through database development
4. Increased reporting frequency to RWQCB



9

RiversideCA.gov

9

INCREMENTAL CHANGES (CONT)

5. Increased monitoring of local waterways
6. Standardized cost reporting and tracking
7. Implement Integrated Pest Management (IPM) in maintenance practices
8. Increased storm drain infrastructure maintenance



10

RiversideCA.gov

10

STATE TRASH AMENDMENTS

1. The State Trash Amendments require the City to fully capture trash from certain priority land use areas by 2030
2. October 23, 2018, the City Council approved an Implementation Plan detailing plan of action
3. Regional Permit creates regulatory requirement to fulfill the Implementation Plan



RiversideCA.gov

11

11

NEW DEVELOPMENT

1. Water Quality Management Plan (WQMP)
2. Increased sizing criteria for infiltration and biotreatment infrastructure in WQMPs
3. Low Impact Development requirements for ministerial projects



RiversideCA.gov

12

12

ROADWAY PROJECT REQUIREMENTS

- Existing permit encourages green infrastructure on a “do what you can, where you can” basis, but without having to generate a WQMP.
- Regional permit now removes the above exemption. Projects are required to generate WQMPs and include a site design that is conducive to LID, incorporate source controls and structural treatment BMPs, and record a commitment to maintain these BMPs in perpetuity.
- Would impact: new roadway areas (widening), grade separations, new sidewalks, and new bicycle paths.



13



RiversideCA.gov

13

TMDLs

1. Middle Santa Ana River Bacterial Indicator TMDL
2. Lake Elsinore/Canyon Lake Nutrient TMDL
3. Regional Permit reinforces TMDL deadlines to comply with water quality objectives



14



RiversideCA.gov

14

WATERSHED MANAGEMENT PLANS

1. Alternative compliance option to comply with water quality objectives
2. Plans include:
 1. Assessment of watershed conditions
 2. Prioritize Watershed Issues
 3. List of Projects and Programs
3. Roadmap for compliance with some requirements but does not represent compliance with TMDL deadlines

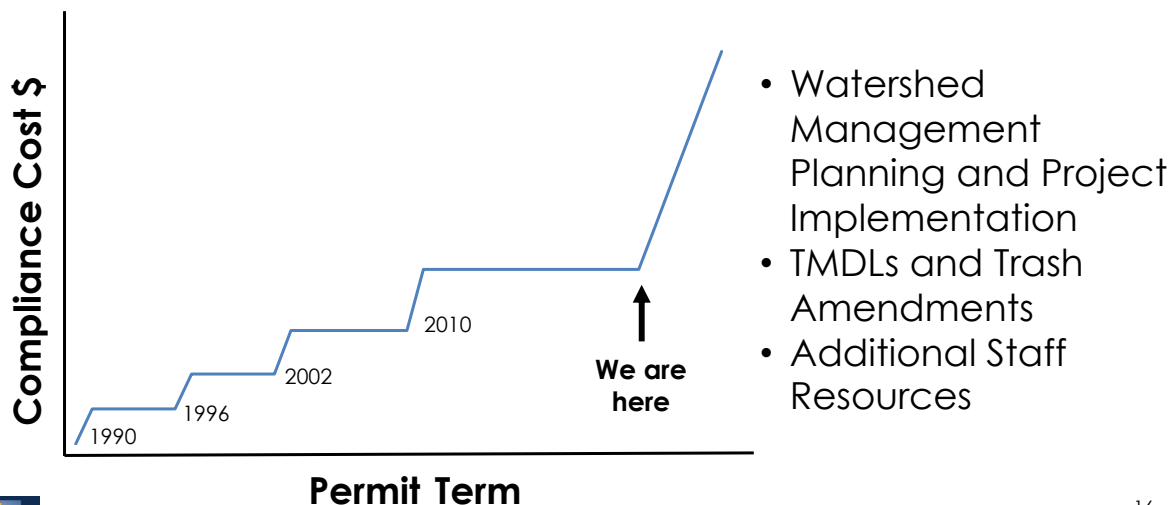


15

RiversideCA.gov

15

CONCLUSION



16

RiversideCA.gov

16

STRATEGIC PLAN ALIGNMENT



Strategic Priority 4 – Environmental Stewardship

Goal 4.2 - Sustainably manage local water resources to maximize reliability and advance water reuse to ensure safe, reliable and affordable water to our community.



Strategic Priority 6 – Infrastructure, Mobility, & Connectivity

Goal 6.2 - Maintain, protect and improve assets and infrastructure within the City's built environment to ensure and enhance reliability, resiliency, sustainability, and facilitate connectivity.



Community Trust



Fiscal Responsibility



Sustainability & Resiliency



Equity



Innovation



17

RiversideCA.gov

17

RECOMMENDATION

That the Mobility & Infrastructure Committee:

1. Receive an update on the National Pollutant Discharge Elimination System (NPDES) Municipal Separate Storm Sewer System (MS4) Permit changes that will impact the City of Riverside.



18

RiversideCA.gov

18