

ELECTRICAL SWITCHGEAR AUTOMATION MODULES AT RIVERSIDE ENERGY RESOURCE CENTER

Riverside Public Utilities

Board of Public Utilities
June 8, 2026

RiversideCA.gov

1

BACKGROUND

Riverside Energy Resource Center (RERC)

1. 196 MW - Four General Electric (GE) LM6000 gas turbine engines
2. Units 1 & 2 Commissioned in 2006
3. Units 3 & 4 Commissioned in 2011
4. Provide up to 30% of Riverside's daily electric power demands during summer months
5. Availability is critical to ensuring RPU can meet minimum electricity demand and reliability needs



2

RiversideCA.gov

2

BACKGROUND

1. RERC Switchgear System Overview

- Eight (8) sets of electrical switchgear
- Switchgear systems rely on 75 automation modules within a computerized network that monitor and control operations
- Essential for safely distributing power and protecting critical plant equipment

2. Existing Automation Modules

- Installed during commissioning
- Operating software is outdated and no longer supported
- Spare parts are no longer available (obsolete components)
- Maintenance and repairs is becoming unsustainable

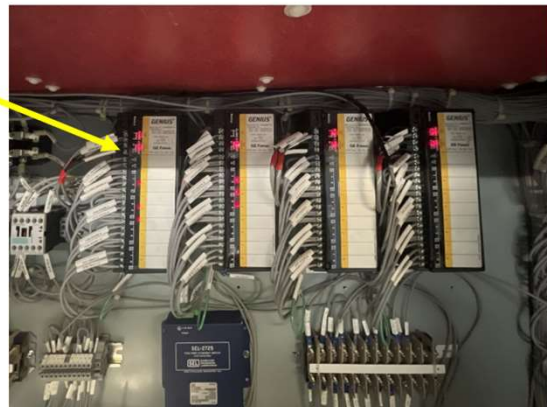


3

RiversideCA.gov

3

BACKGROUND – OBSOLETE MODULES



4



RiversideCA.gov

4

DISCUSSION

- 1. Replace 35 obsolete modules with current fully supported versions
 - a. Retain removed modules as spare parts for remaining 40 in service
 - b. In-house labor leveraging RPU staff expertise
- 2. CB Pacific Inc. is the authorized distributor
 - a. Replacement modules will be fully compatible with existing switchgear systems significantly reducing the risk of incompatibility issues
 - b. Will provide necessary support to ensure proper integration

| Item | Cost |
|-----------------------|--------------------|
| 35 Automation Modules | \$53,833.50 |
| 6 Controllers | \$10,243.80 |
| Sales Tax (8.75%) | \$5,606.80 |
| Total | \$69,684.10 |



5

5

DISCUSSION – SOLE SOURCE JUSTIFICATION

This action is pursuant to Purchasing Resolution No. 24101, Section 602 which states “Competitive procurement through the Informal Procurement or Formal procurement process shall not be required in any of the following circumstances:...(c) - When the procurement can only be obtained timely from a sole source and the Manager is satisfied that the best price, terms and conditions for the Procurement thereof have been negotiated.”

The Purchasing Manager concurs that the recommended action is compliant with Purchasing Resolution No. 24101, Section 602(c).



6

6

RECOMMENDATIONS

That the Board of Public Utilities approve the purchase of thirty-five (35) automation modules for the electrical switchgear at the Riverside Energy Resource Center from CB Pacific Inc. of Kirkland, Washington in the amount of \$69,684.10.

