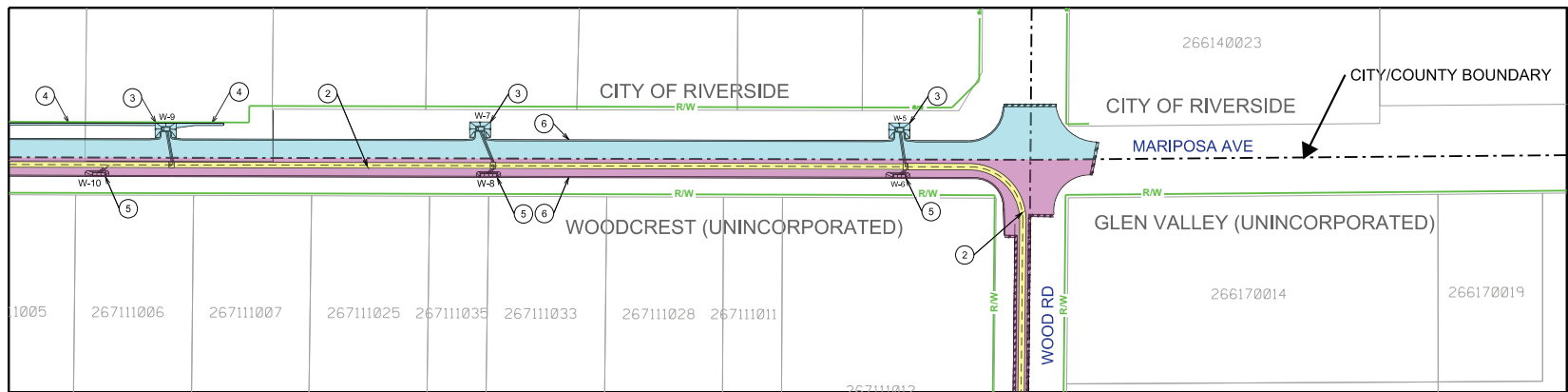

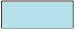



MATCH LINE SEE BELOW LEFT



MATCH LINE SEE ABOVE RIGHT

LEGEND	
	DRAINAGE IMPROVEMENTS MAINTAINED BY R.C.F.D & W.C.D.
	STREET/DRAINAGE IMPROVEMENTS MAINTAINED BY CITY OF RIVERSIDE
	STREET/DRAINAGE IMPROVEMENTS MAINTAINED BY RIVERSIDE COUNTY TRANSPORTATION DEPT.

- ① PROP. CONCRETE INLET STRUCTURE & CONCRETE APRON MAINTAINED BY R.C.F.C & W.C.D.
- ② PROP. STORM DRAIN MAINLINE MAINTAINED BY R.C.F.C & W.C.D.
- ③ PROP. CATCH BASIN MAINTAINED BY CITY OF RIVERSIDE
- ④ PROP. CONCRETE V-DITCH MAINTAINED BY CITY OF RIVERSIDE
- ⑤ PROP. CATCH BASIN MAINTAINED BY RIVERSIDE COUNTY TRANSPORTATION DEPT.
- ⑥ PROP. 4" ASPHALT CONCRETE DIKE.

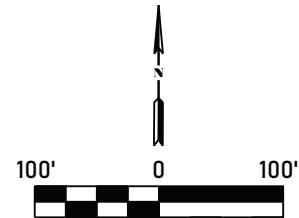


EXHIBIT C- CITY MAINTENANCE EXHIBIT

**COOPERATIVE AGREEMENT
WOODCREST-RINEHART ACRES
DRAINAGE PLAN IMPROVEMENTS
PROJECT NO. 2-0-00406**