



2024 RPU'S GROUNDWATER ATLAS

Public Utilities

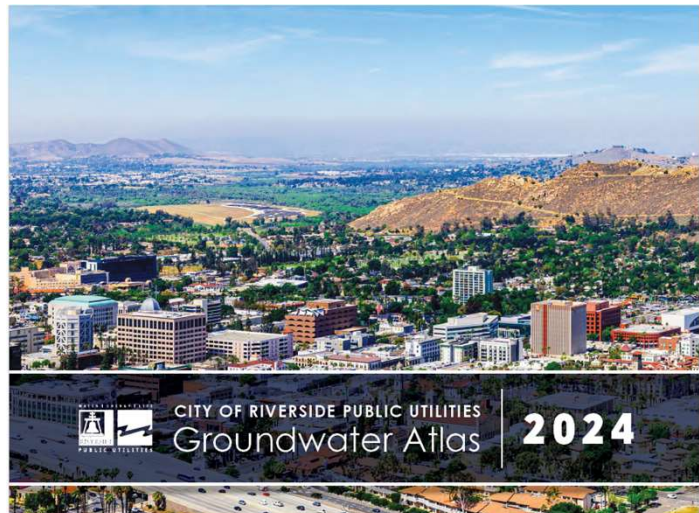
Board of Public Utilities
August 11, 2025

RiversideCA.gov

1

Purpose of the 2024 Groundwater Atlas

1. Describes Current condition of the groundwater basins
2. Tracks changes over time
3. Provide readable data to Customers, Elected officials, Executive Management and RPU staff.
4. Support water supply planning and management.



2

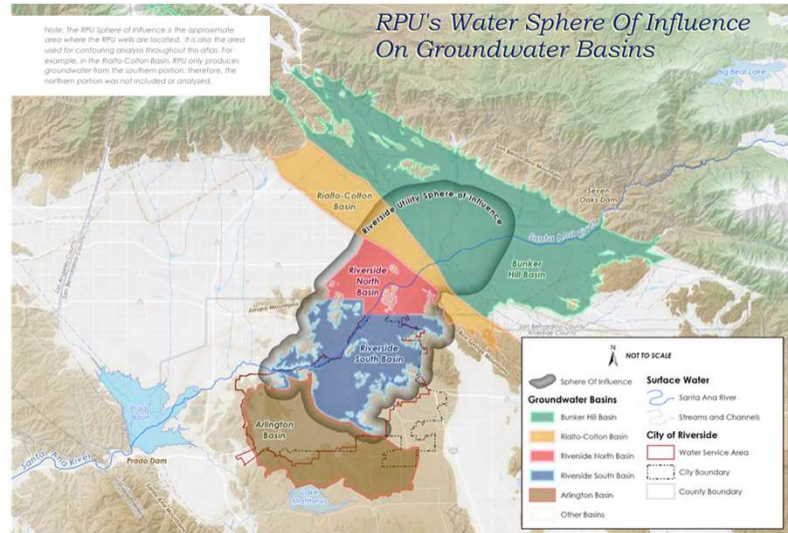


RiversideCA.gov

2

What's New in 2024

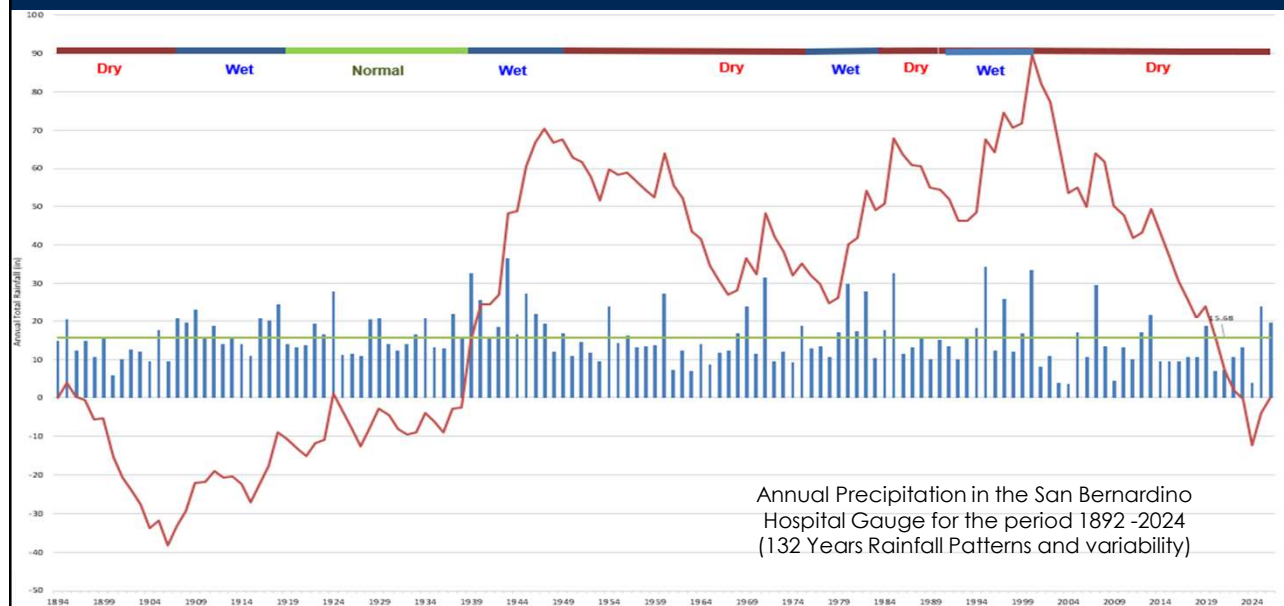
1. Updates the 2021 GW Atlas
2. Last presented to Board:
November 14, 2022
3. Includes exhibits covering:
 - a. Basin hydrology
 - b. RPU Groundwater rights
 - c. RPU 2024 production
 - d. Groundwater levels, storage, and quality



RiversideCA.gov

3

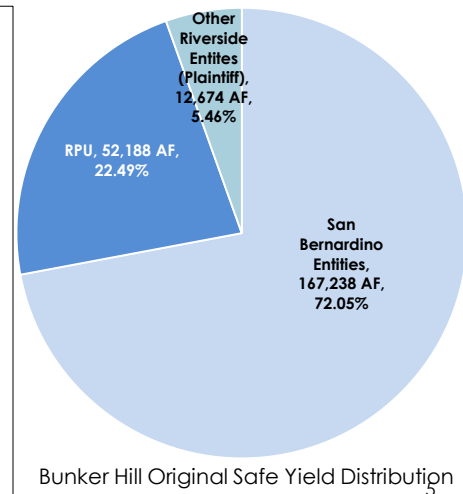
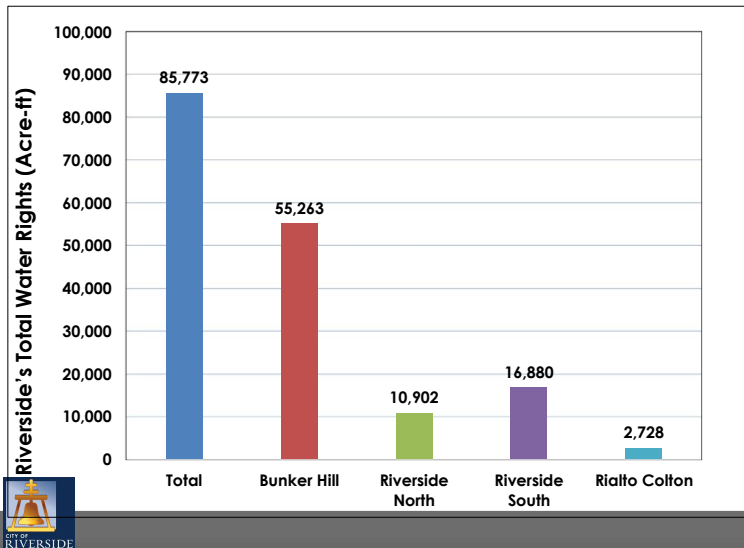
HYDROLOGIC CONDITIONS



4

GROUNDWATER RESOURCES MANAGEMENT

The City of Riverside Total Water Right and Base Period Production (in acre-feet) by Basin



RiversideCA.gov

5

RPU GROUNDWATER SYSTEM

RPU Water System Overview:

1. 52 groundwater wells
2. 44 miles of potable transmission mains
3. 30 miles of non-potable conveyance system
4. Serves ~300,000 people
5. 69,340 service connections
6. 75 square-mile service area
7. Surplus water also provided to the City of Norco and Western Municipal Water District

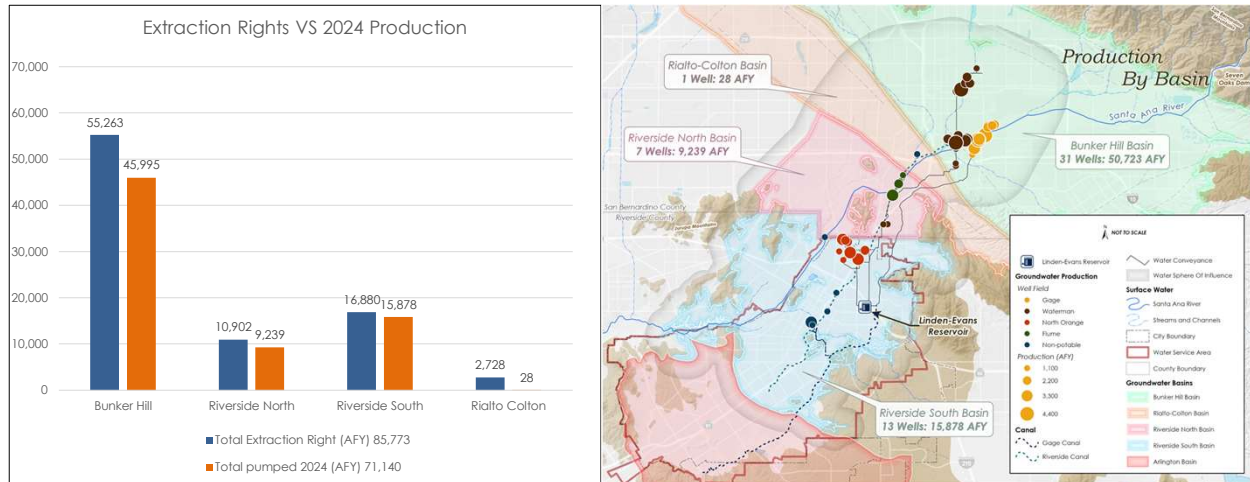


6

RiversideCA.gov

6

GROUNDWATER PRODUCTION



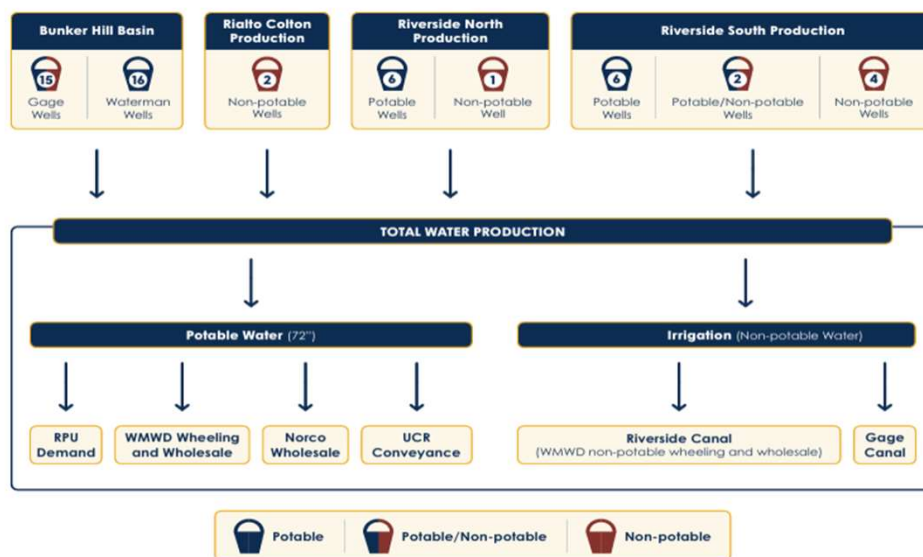
7

RiversideCA.gov

7

GROUNDWATER FACILITIES

RPU Water Production



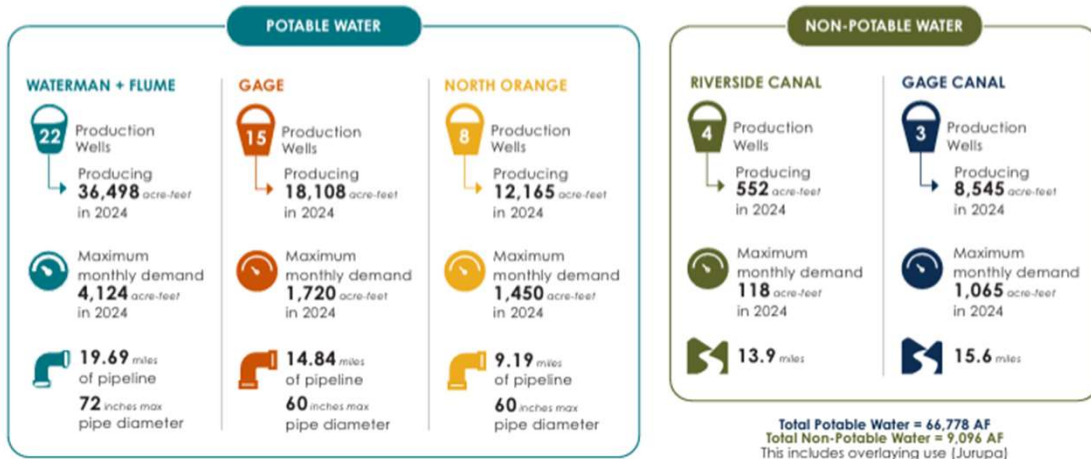
8

CA.gov

8

GROUNDWATER FACILITIES

Groundwater Well Production and Pipes



9

RiversideCA.gov

9

GROUNDWATER LEVELS

Basin Monitoring Activities:

1. RPU monitors 4 groundwater basins:
 - Bunker Hill, Rialto Colton, Riverside North and Riverside South Basins
2. Data collected from RPU, USGS and other water agencies:
 - Water levels
 - Water quality
 - Production
3. Groundwater levels show a **long-term decline** over the past 25 years → **Impact:** Higher production costs and reduced capacity

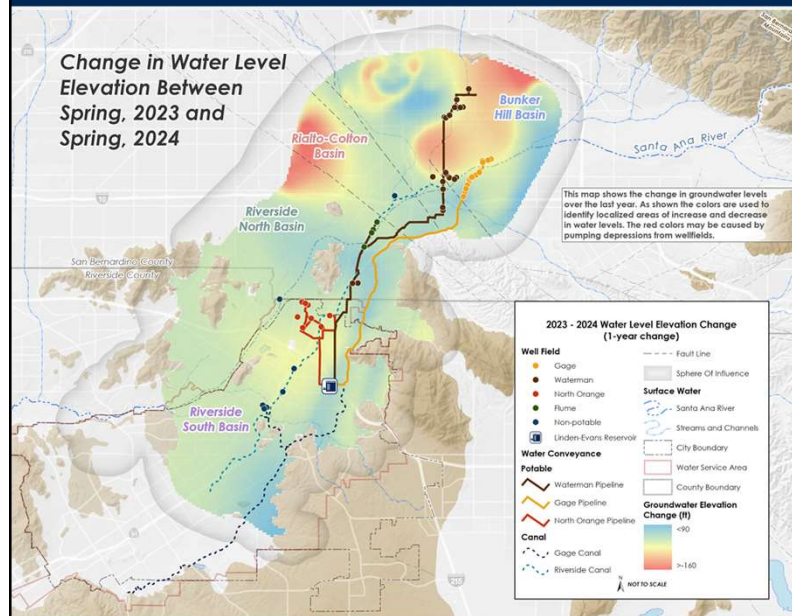


10

RiversideCA.gov

10

GROUNDWATER LEVELS



Groundwater Level Decline from 1999 to 2024 within RPU's Sphere of Influence:

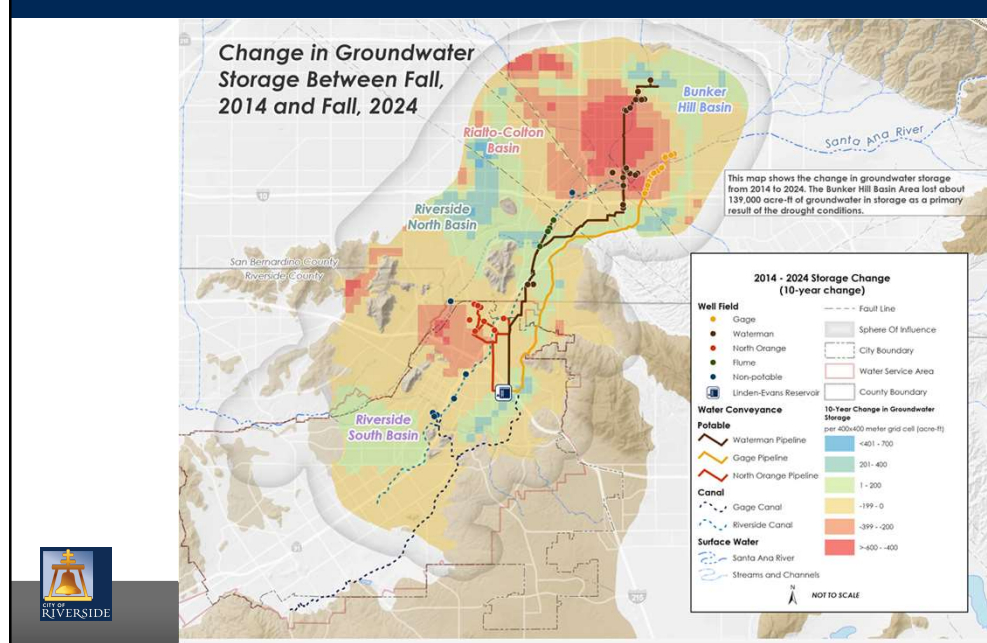
- BUNKER HILL
Decline of about 4.7 ft/yr
- RIALTO-COLTON
Decline of about 1 ft/yr
- RIVERSIDE NORTH
Decline 2.1 ft/yr
- RIVERSIDE SOUTH
Decline 0.3 ft/yr

11

RiversideCA.gov

11

GROUNDWATER IN STORAGE

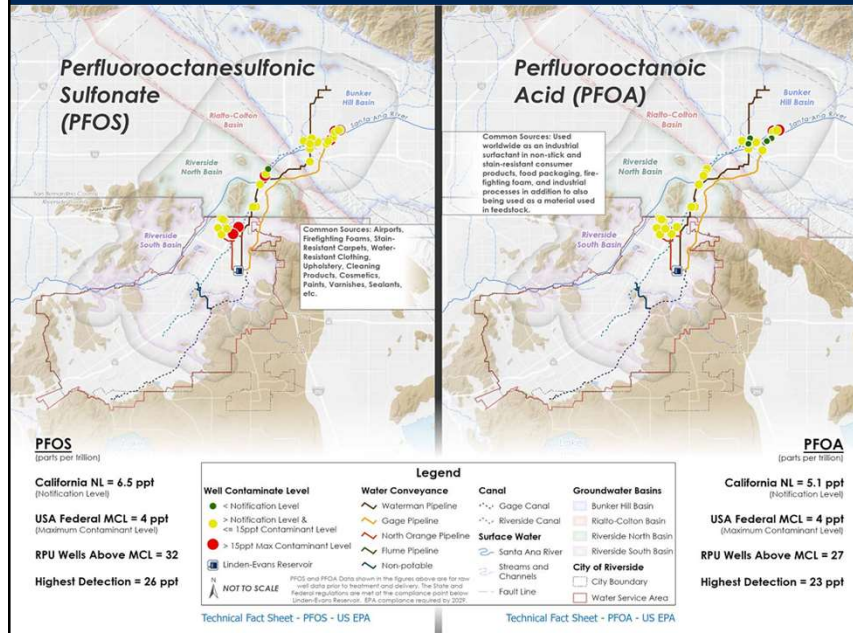


12

RiversideCA.gov

12

GROUNDWATER QUALITY



2024 Groundwater Quality

Sources

- 49 wells sampled
- 45 potable water
- 4 non-potable water

A summary of the water quality data is geographically displayed. PFOS and PFOA is shown as an example to the left.

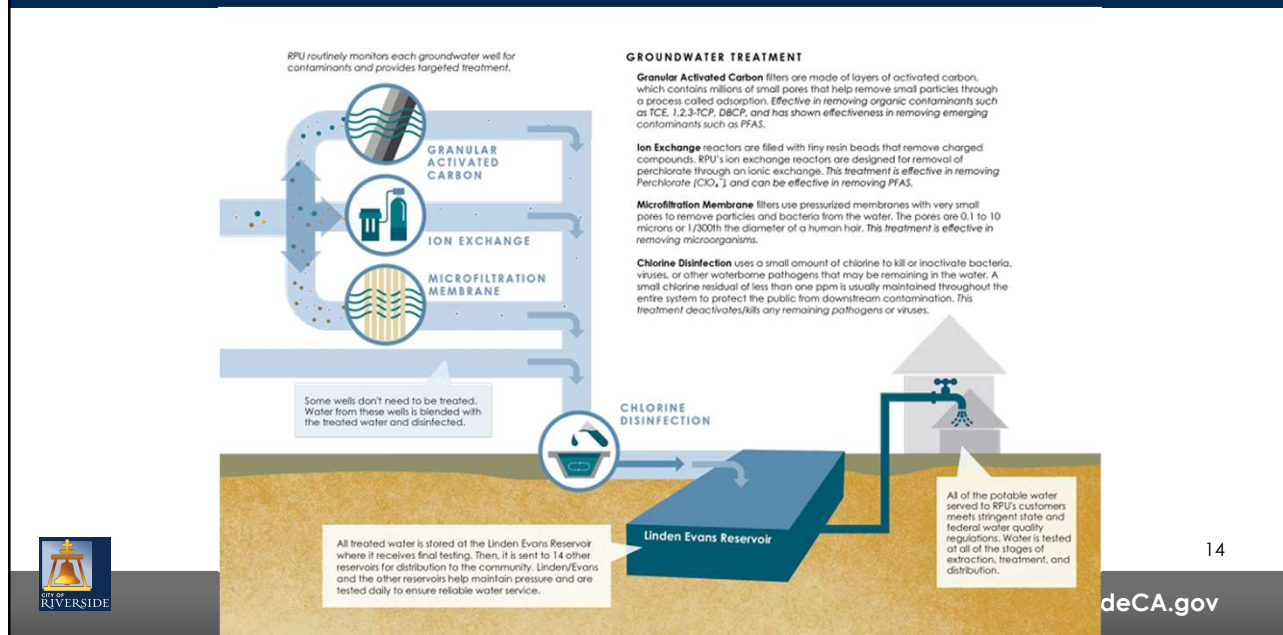
Compliance with EPA PFAS regulations is required by 2031.

13

RiversideCA.gov

13

GROUNDWATER TREATMENT



14

14

RECOMMENDATIONS

That the Riverside Public Utilities Board receive this update on RPU's 2024 Groundwater Atlas.



15

RiversideCA.gov