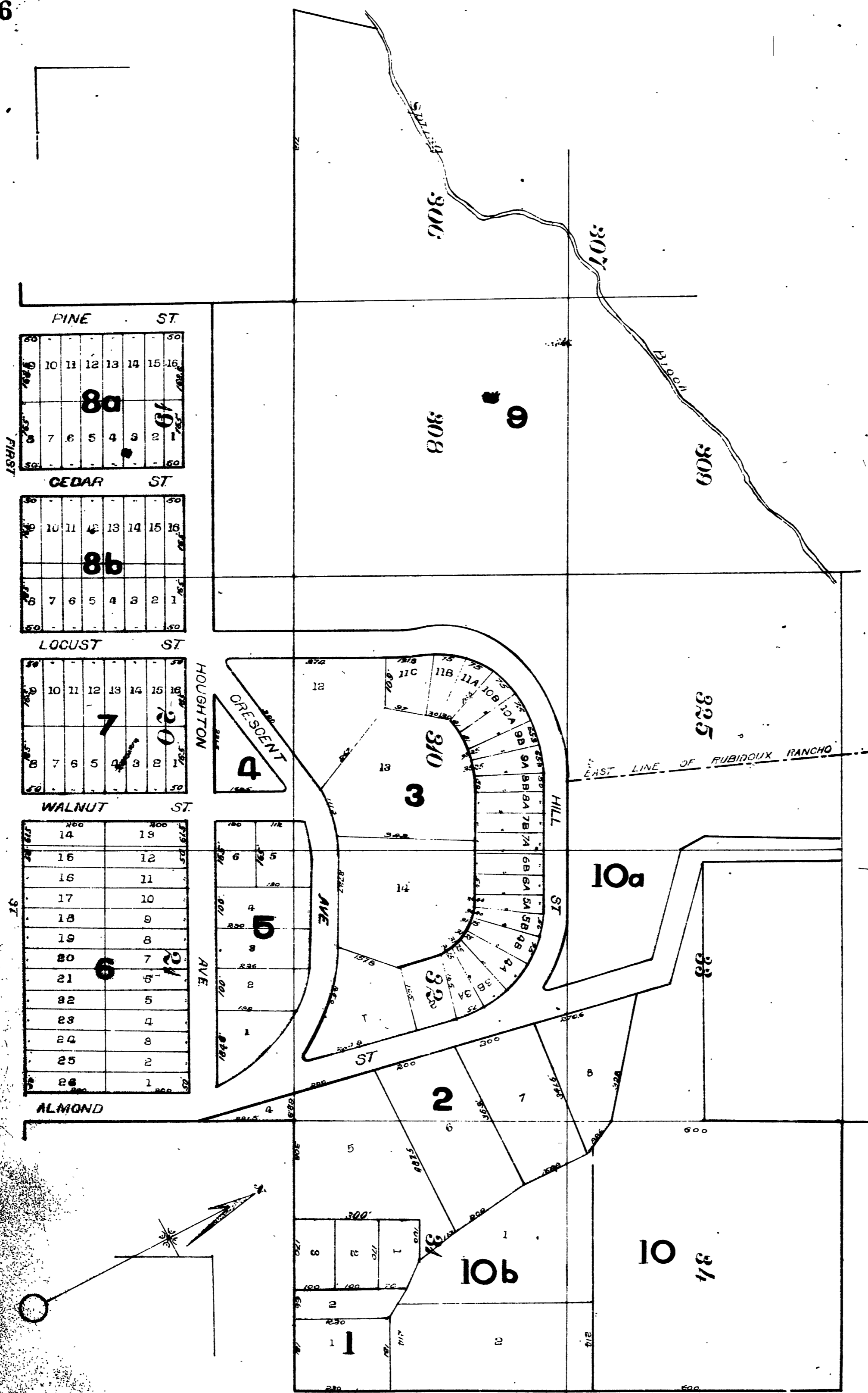


500K 1

M.B. 1/46

46



FAIRMOU

State of
County of
On this
I have
made
my hand
and seal
this 1st
day of

MB 1/46

M.B. 1/46

MAP N° 4

FAIRMOUNT HEIGHTS TRACT

Being a Subdivision of Lots 19 20 21 31 32 the South 1/2 of Lot 33
Lots 34 308 310 and fractional Lots 306 307 309 and all of 325
lying west of east line of the Rubidoux Rancho all according to
a plat of the Lands of the Riverside Land and Irrigating Com-
pany Recorded in the Office of the Recorder of San Bernar-
dino County in Book 7 of Maps on page 9

RECEIVED FOR RECORD SEP 17 1895 AT 30MIN
PAST 4 O'CLOCK P.M. AT REQUEST OF JOHN G
NORTH RECORDED IN BOOK N° 1 OF MAPS
PAGE 46 ET SEQ RECORDS OF RIVERSIDE
COUNTY CALIFORNIA ON NOV. 1 1895
AT 30MIN PAST 9 O'CLOCK P.M. H. GRUWELL
RECORDER BY I. S. LOGAN DEPUTY
RECORDER
Fees \$17.00 Pd

John G. North hereby execute and adopt this
Map to designate the different parts of land which
it represents as divided into lots and blocks and stre-
ets
John G. North

State of California } ss.
County of Riverside

On this 17th day of September 1895 before me I. S.
Logan a notary public in and for said County
and State residing therein duly commissioned and
sworn personally appeared John G. North persona-
lly known to me to be the person described in and
whose name is subscribed to and who executed
the above instrument and acknowledged to me
that he executed the same freely and voluntarily.

NOTARIAL
SEAL

I. S. Logan Notary Public
IN AND FOR
Riverside Co. Cal.

I hereby certify the above to be a full true
and correct copy of the original
E. H. GRUWELL
Co RECORDER BY
Geo M Pearson Co Sur and
EX-OFFICIO DEPUTY Co RECORDER

300
305
310
315
320
325
330
335
340
345
350
355
360
365
370
375
380
385
390
395
400
405
410
415
420
425
430
435
440
445
450
455
460
465
470
475
480
485
490
495
500
505
510
515
520
525
530
535
540
545
550
555
560
565
570
575
580
585
590
595
600
605
610
615
620
625
630
635
640
645
650
655
660
665
670
675
680
685
690
695
700
705
710
715
720
725
730
735
740
745
750
755
760
765
770
775
780
785
790
795
800
805
810
815
820
825
830
835
840
845
850
855
860
865
870
875
880
885
890
895
900
905
910
915
920
925
930
935
940
945
950
955
960
965
970
975
980
985
990
995

10a

10

MAP OF FAIRMOUNT PARK LAKE

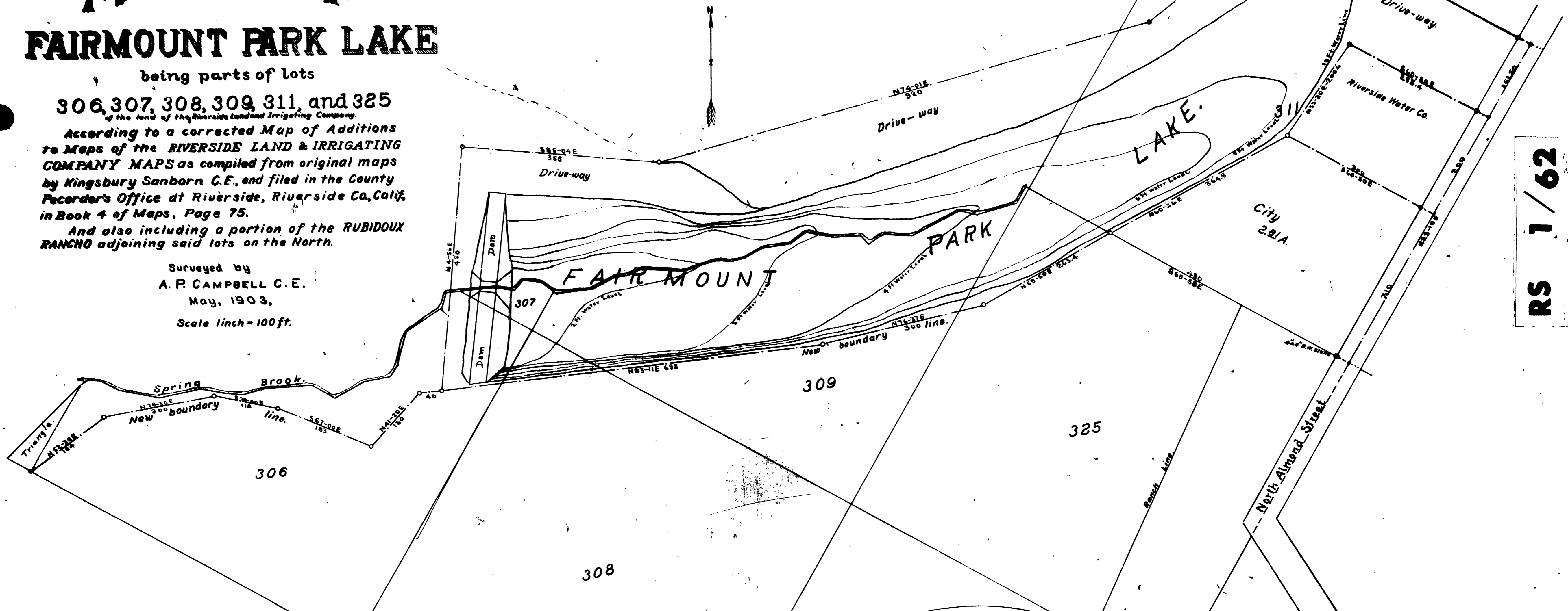
being parts of lots

306, 307, 308, 309, 311, and 325

of the land of the Riverside Land and Irrigating Company.
According to a corrected Map of Additions to Maps of the RIVERSIDE LAND & IRRIGATING COMPANY MAPS as compiled from original maps by Kingsbury Sanborn C.E., and filed in the County Recorder's Office at Riverside, Riverside Co., Calif. in Book 4 of Maps, Page 75.

And also including a portion of the RUBIDOUX RANCHO adjoining said lots on the North.

Surveyed by
A. P. CAMPBELL C. E.
May, 1903,
Scale 1 inch = 100 ft.



RS 1/62

The Riverside Land and Irrigating Company,
and the City of Riverside, of Riverside County,
California, corporations organized under the laws of the
State of California, by their proper officers, duly authorized,
herely execute and adopt this Map as compiled from a survey by
A. P. Campbell, City Engineer, of the City of Riverside, Riverside County,
California in May 1903, as correctly showing the proposed "Fairmount Park Lake",
Dam and Driveway, and other lines and boundaries adjoining.

The RIVERSIDE LAND AND IRRIGATING COMPANY.
By [Signature] President.
By [Signature] Secretary.

CITY OF RIVERSIDE.
By [Signature] President
of the Board of Trustees of said City of Riverside.
By [Signature] Clerk
of the Board of Trustees of said City of Riverside.

I hereby certify that this Map of the proposed "FAIRMOUNT PARK LAKE" is a correct representation of the survey made by me in May 1903.

[Signature]



EXPLANATORY.

3" iron pipes are set at places delineated on the map by small circles.

State of California
County of Riverside. ss.

On this 8th day of June in the year of Our Lord One
Thousand Nine Hundred and three, before me, W. A. Correll, a
Notary Public in and for said County of Riverside, residing therein,
duly commissioned and sworn, personally appeared S. C. Evans Jr., Pres.,
and P. T. Evans Secy. of the RIVERSIDE LAND and IRRIGATING COMPANY, a corpora-
tion, and C. L. McFarland President of the Board of Trustees of the CITY
OF RIVERSIDE, a Municipal corporation, and C. R. Stebbins, Clerk thereof, person-
ally known to me to be the President and Secretary of the said Riverside Land and
Irrigating Company and President and Clerk of the said Board of Trustees of said City
of Riverside, and who executed the within and annexed instruments, and acknowledged
to me, that said corporations executed the same.

IN WITNESS WHEREOF, I have hereunto set my hand and affixed my official
seal, the day and year in this Certificate first above written.

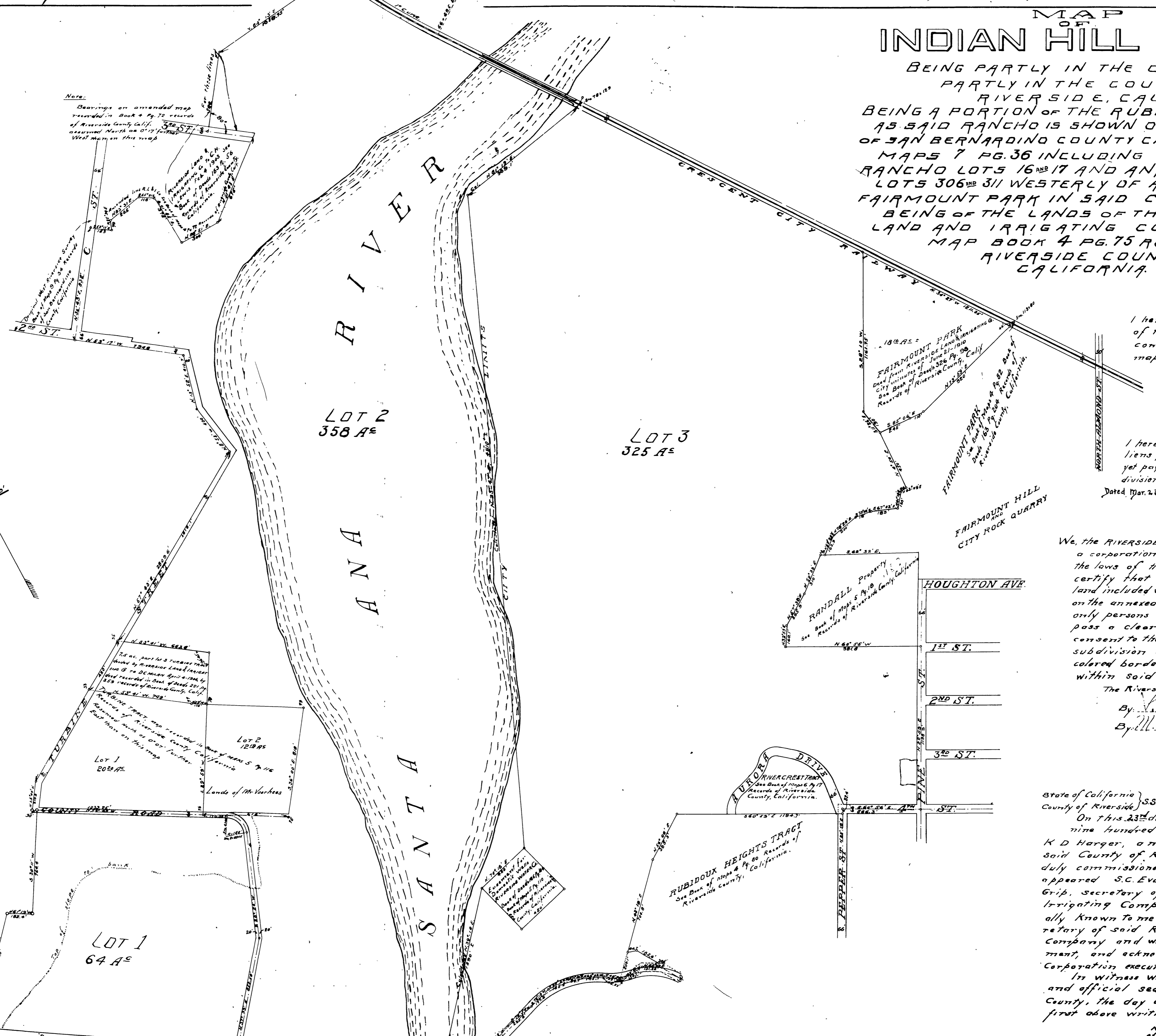
[Signature]
Notary Public in and for Riverside County, State of California.

CBI

RS 1/62

MAP OF INDIAN HILL TRACT

BEING PARTLY IN THE CITY AND PARTLY IN THE COUNTY OF RIVERSIDE, CALIF. BEING A PORTION OF THE RUBIDOUX RANCHO AS SAID RANCHO IS SHOWN ON THE RECORDS OF SAN BERNARDINO COUNTY CALIF. IN BOOK OF MAPS 7 PG. 36 INCLUDING WITHIN SAID RANCHO LOTS 16 AND 17 AND ANY PORTION OF LOTS 306 AND 311 WESTERLY OF AND ADJOINING FAIRMOUNT PARK IN SAID CITY, SAID LOTS BEING OF THE LANDS OF THE RIVERSIDE LAND AND IRRIGATING COMPANY PER MAP BOOK 4 PG. 75 RECORDS OF RIVERSIDE COUNTY, CALIFORNIA.



Note: Bearings on amended map recorded in Book 4 Pg. 72 records of Riverside County Calif. assumed North as 0° 17' further West than on this map.

Note: This tract was recorded in Book of Maps 5 Pg. 119 Records of Riverside County Calif. assumed North as 0° 27' further East than on this map.

Note: West Riverside Bridge Map Book 5 Pg. 119 Records of Riverside County Calif. assumed North as 0° 27' further East than on this map.

I hereby certify that this map of the INDIAN HILL TRACT was compiled by me from original maps and deeds in March, 1911.
A. P. Campbell
Civil Engineer.

I hereby certify that there are no liens for unpaid taxes, except taxes not yet payable, against any portion of the subdivision covered by this map.
Dated Mar. 23, 1911.
C. H. Subbeus
Auditor of the City of Riverside.

We, the RIVERSIDE LAND AND IRRIGATING COMPANY, a corporation organized and existing under the laws of the State of CALIFORNIA, hereby certify that we are the owners of the land included within the subdivision shown on the annexed map, and that we are the only persons whose consent is necessary to pass a clear title to said land, and we consent to the making of said map and subdivision as shown within the green colored border line shown on said map within said subdivision.
The Riverside Land and Irrigating Company
By *[Signature]* President.
By *[Signature]* Secretary.

State of California } S.S.
County of Riverside }
On this 23rd day of March, one thousand nine hundred and eleven, before me, K D Harger, a notary public in and for the said County of Riverside, residing therein, duly commissioned and sworn, personally appeared S. C. Evans, President, and M. M. Grip, Secretary of the Riverside Land and Irrigating Company, a corporation, personally known to me to be the president and secretary of said Riverside Land and Irrigating Company and who executed the within instrument, and acknowledged to me that said Corporation executed the same.
In Witness Whereof I hereby set my hand and official seal in Riverside in the said County, the day and year in this certificate first above written.
K. D. Harger
Notary Public in and for the County of Riverside, State of California.



- 1. Paved Drive
- 2. Paved Tee
- 3. Concrete Tee
- 4. Brick Walk
- 5. Concrete
- 6. Paved
- 7. Concrete
- 8. Paved
- 9. Concrete
- 10. Concrete
- 11. Paved
- 12. Paved
- 13. Paved
- 14. Paved
- 15. Paved
- 16. Paved
- 17. Paved
- 18. Paved
- 19. Paved
- 20. Paved
- 21. Paved
- 22. Paved
- 23. Paved
- 24. Paved
- 25. Paved
- 26. Paved
- 27. Paved
- 28. Paved
- 29. Paved
- 30. Paved
- 31. Paved
- 32. Paved
- 33. Paved
- 34. Paved
- 35. Paved

FAIRMOUNT PARK
RIVERSIDE CALIFORNIA
TOPOGRAPHICAL MAP

Scale 60' = 1"

H.R. Campbell,
City Engineer

Traced from Original
Feb. May 25, 1910



EVANSFIELD For Baseball, ETC

- 1 Sunset Glens
- 2 Pepper Tree
- 3 Calloway Tree
- 4 Sida Plum
- 5 Elm
- 6 Fan Palm
- 7 Cornus
- 8 Alcade
- 9 Eucalyptus
- 10 Oak
- 11 Locust
- 12 Maple
- 13 Alder
- 14 Redwood
- 15 Gum
- 16 Redwood
- 17 Redwood
- 18 Shady
- 19 Ginkgo
- 20 Umbrella
- 21 Cecile
- 22 Willow
- 23 Pine
- 24 Spenser
- 25 Mulberry
- 26 Starling Dwarfs
- 27 Alder
- 28 Ash
- 29 House Palm
- 30 Fig
- 31 Walnut
- 32 Cypress
- 33 Magnolia
- 34 Cedar
- 35 Pomegranate

SUGGES PFD. BOUNDARY

OUTLET WATER ELEVATION 780

Note: Drives 24 ft wide
Walks 8 " " "
Planting Strips 6 " " "

FAIRMOUNT PARK
RIVERSIDE, CALIFORNIA
PRELIMINARY PLAN
FOR
ADDITIONS AND FURTHER IMPROVEMENTS

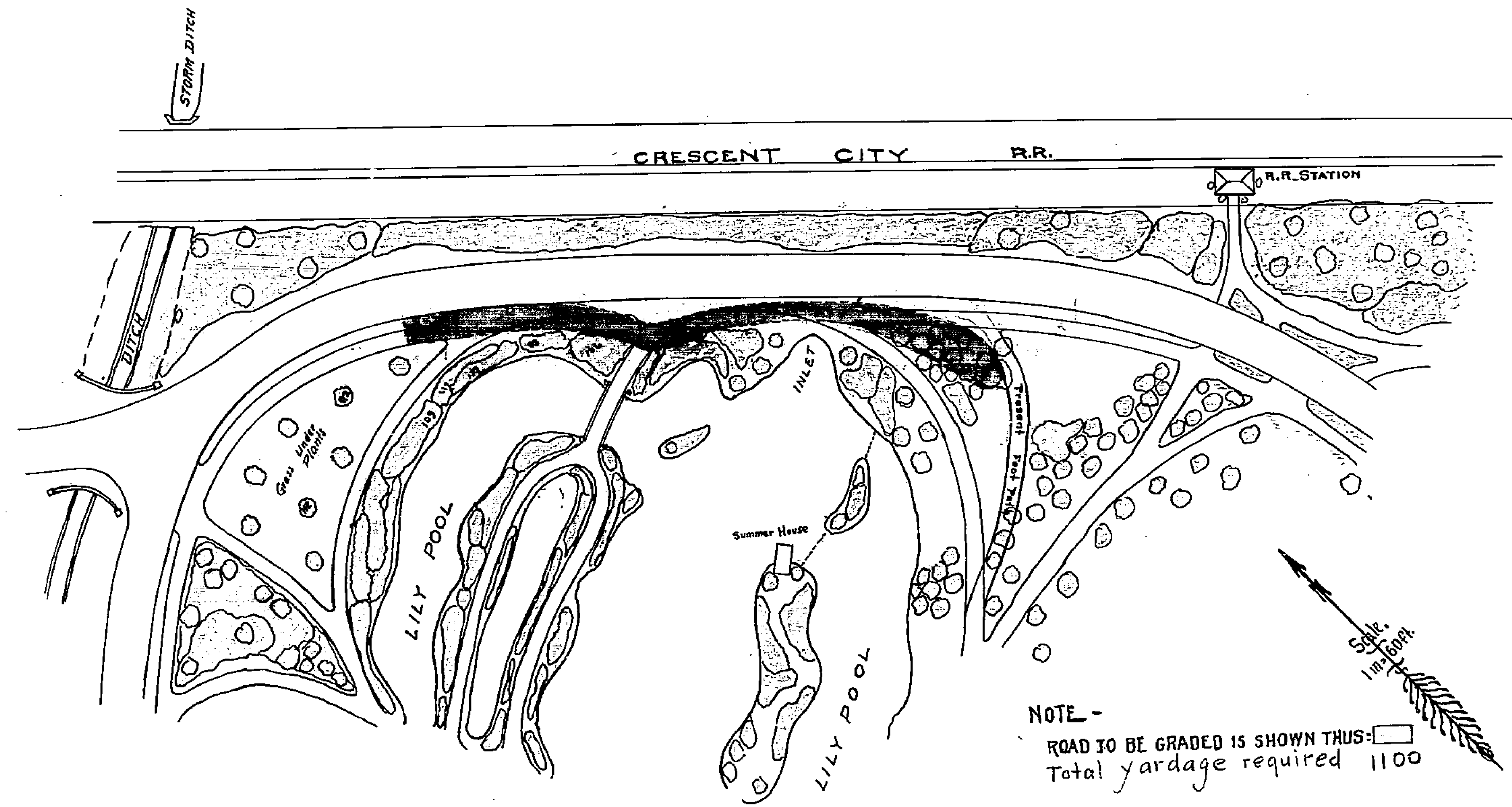
Scale 1" = 60'

Olmsted Brothers, Landscape Architects
Brookline, Mass. and San Diego, Cal.
May 19, 1906

3

John C. Olmsted

1415





FAIRMOUNT PARK
RIVERSIDE, CALIFORNIA
PLANTING PLAN
Scale 60'-1"

Olmsted Brothers, Landscape Architects
Brookline, Mass., and San Diego, Cal.
June 6, 1911.

Planting List

No.	Planting List	Height	Sp. Plant
1	Pumpkin	20"	13
2	Poplar Tree	25"	30
3	Collard Tree	18"	19
4	White Pine	8"	43
5	Elm	3"	30
6	Palm	20"	7
7	Camphor	15"	23
8	Acacia	6"	48
9	Eucalyptus	3"	25
10	Redwood	6"	60
11	Locust	6"	45
12	Maple	8"	132
13	Alum	10"	27
14	Boxwood	15"	103
15	Gladiolus	15"	11
16	Shrubbery	12"	12
17	Colony	4"	24
18	Umbrella	10"	27
19	Greenleaf	15"	103
20	Willow	15"	11
21	Pine	8"	43
22	Flower	3"	30
23	Shrubbery	20"	7
24	Shrubbery	15"	23
25	Ash	6"	48
26	Red Palm	3"	25
27	Fig	6"	60
28	Walnut	6"	45
29	Opuntia	8"	132
30	Agave	10"	27
31	Yucca	15"	103
32	Yucca	15"	11
33	Yucca	12"	12
34	Yucca	4"	24
35	Yucca	10"	27
36	Yucca	15"	103
37	Yucca	15"	11
38	Yucca	12"	12
39	Yucca	4"	24
40	Yucca	10"	27
41	Yucca	15"	103
42	Yucca	15"	11
43	Yucca	12"	12
44	Yucca	4"	24
45	Yucca	10"	27
46	Yucca	15"	103
47	Yucca	15"	11
48	Yucca	12"	12
49	Yucca	4"	24
50	Yucca	10"	27

Planting List (continued)

No.	Planting List	Height	Sp. Plant
51	Yucca	15"	103
52	Yucca	15"	11
53	Yucca	12"	12
54	Yucca	4"	24
55	Yucca	10"	27
56	Yucca	15"	103
57	Yucca	15"	11
58	Yucca	12"	12
59	Yucca	4"	24
60	Yucca	10"	27
61	Yucca	15"	103
62	Yucca	15"	11
63	Yucca	12"	12
64	Yucca	4"	24
65	Yucca	10"	27
66	Yucca	15"	103
67	Yucca	15"	11
68	Yucca	12"	12
69	Yucca	4"	24
70	Yucca	10"	27
71	Yucca	15"	103
72	Yucca	15"	11
73	Yucca	12"	12
74	Yucca	4"	24
75	Yucca	10"	27
76	Yucca	15"	103
77	Yucca	15"	11
78	Yucca	12"	12
79	Yucca	4"	24
80	Yucca	10"	27
81	Yucca	15"	103
82	Yucca	15"	11
83	Yucca	12"	12
84	Yucca	4"	24
85	Yucca	10"	27
86	Yucca	15"	103
87	Yucca	15"	11
88	Yucca	12"	12
89	Yucca	4"	24
90	Yucca	10"	27

Planting List (continued)

No.	Planting List	Height	Sp. Plant
91	Yucca	15"	103
92	Yucca	15"	11
93	Yucca	12"	12
94	Yucca	4"	24
95	Yucca	10"	27
96	Yucca	15"	103
97	Yucca	15"	11
98	Yucca	12"	12
99	Yucca	4"	24
100	Yucca	10"	27
101	Yucca	15"	103
102	Yucca	15"	11
103	Yucca	12"	12
104	Yucca	4"	24
105	Yucca	10"	27
106	Yucca	15"	103
107	Yucca	15"	11
108	Yucca	12"	12
109	Yucca	4"	24
110	Yucca	10"	27
111	Yucca	15"	103
112	Yucca	15"	11
113	Yucca	12"	12
114	Yucca	4"	24
115	Yucca	10"	27
116	Yucca	15"	103
117	Yucca	15"	11
118	Yucca	12"	12
119	Yucca	4"	24
120	Yucca	10"	27

Planting List (continued)

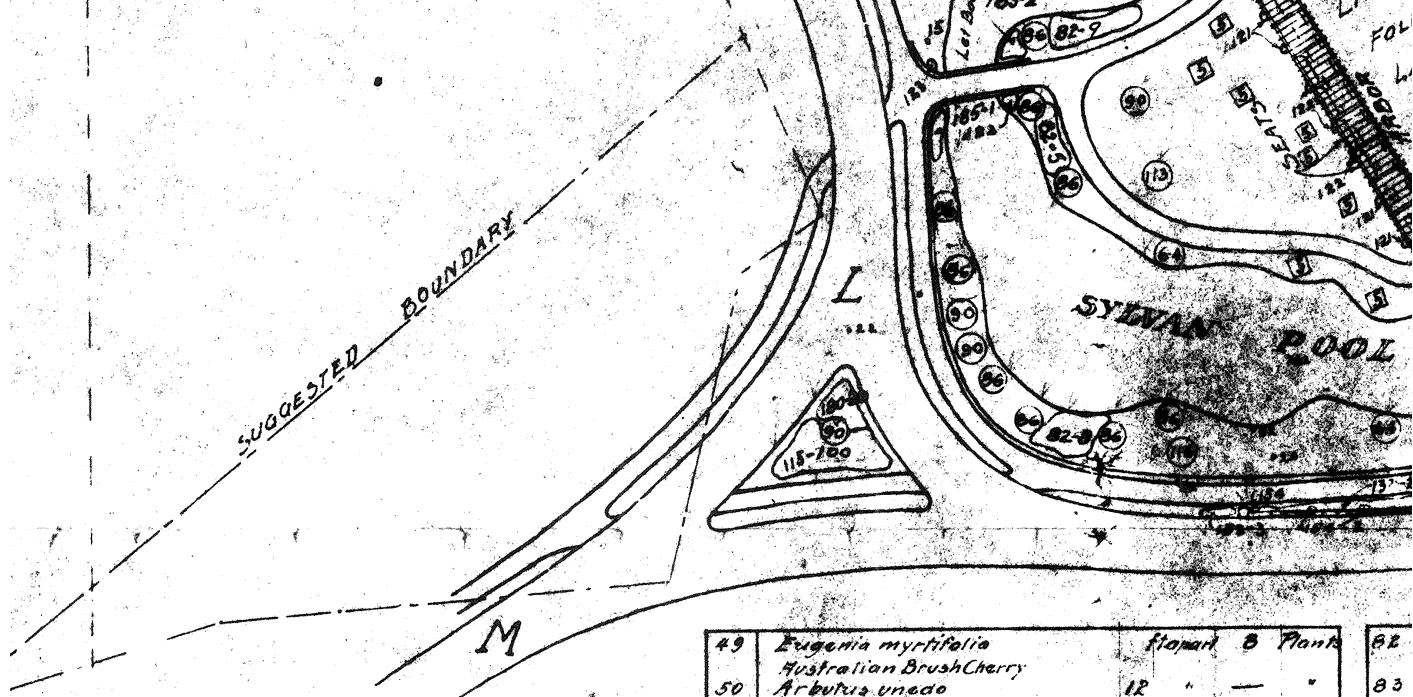
No.	Planting List	Height	Sp. Plant
121	Yucca	15"	103
122	Yucca	15"	11
123	Yucca	12"	12
124	Yucca	4"	24
125	Yucca	10"	27
126	Yucca	15"	103
127	Yucca	15"	11
128	Yucca	12"	12
129	Yucca	4"	24
130	Yucca	10"	27
131	Yucca	15"	103
132	Yucca	15"	11
133	Yucca	12"	12
134	Yucca	4"	24
135	Yucca	10"	27
136	Yucca	15"	103
137	Yucca	15"	11
138	Yucca	12"	12
139	Yucca	4"	24
140	Yucca	10"	27
141	Yucca	15"	103
142	Yucca	15"	11
143	Yucca	12"	12
144	Yucca	4"	24
145	Yucca	10"	27
146	Yucca	15"	103
147	Yucca	15"	11
148	Yucca	12"	12
149	Yucca	4"	24
150	Yucca	10"	27

Planting List (continued)

No.	Planting List	Height	Sp. Plant
151	Yucca	15"	103
152	Yucca	15"	11
153	Yucca	12"	12
154	Yucca	4"	24
155	Yucca	10"	27
156	Yucca	15"	103
157	Yucca	15"	11
158	Yucca	12"	12
159	Yucca	4"	24
160	Yucca	10"	27
161	Yucca	15"	103
162	Yucca	15"	11
163	Yucca	12"	12
164	Yucca	4"	24
165	Yucca	10"	27
166	Yucca	15"	103
167	Yucca	15"	11
168	Yucca	12"	12
169	Yucca	4"	24
170	Yucca	10"	27

Planting List (continued)

No.	Planting List	Height	Sp. Plant
171	Yucca	15"	103
172	Yucca	15"	11
173	Yucca	12"	12
174	Yucca	4"	24
175	Yucca	10"	27
176	Yucca	15"	103
177	Yucca	15"	11
178	Yucca	12"	12
179	Yucca	4"	24
180	Yucca	10"	27
181	Yucca	15"	103
182	Yucca	15"	11
183	Yucca	12"	12
184	Yucca	4"	24
185	Yucca	10"	27
186	Yucca	15"	103
187	Yucca	15"	11
188	Yucca	12"	12
189	Yucca	4"	24
190	Yucca	10"	27

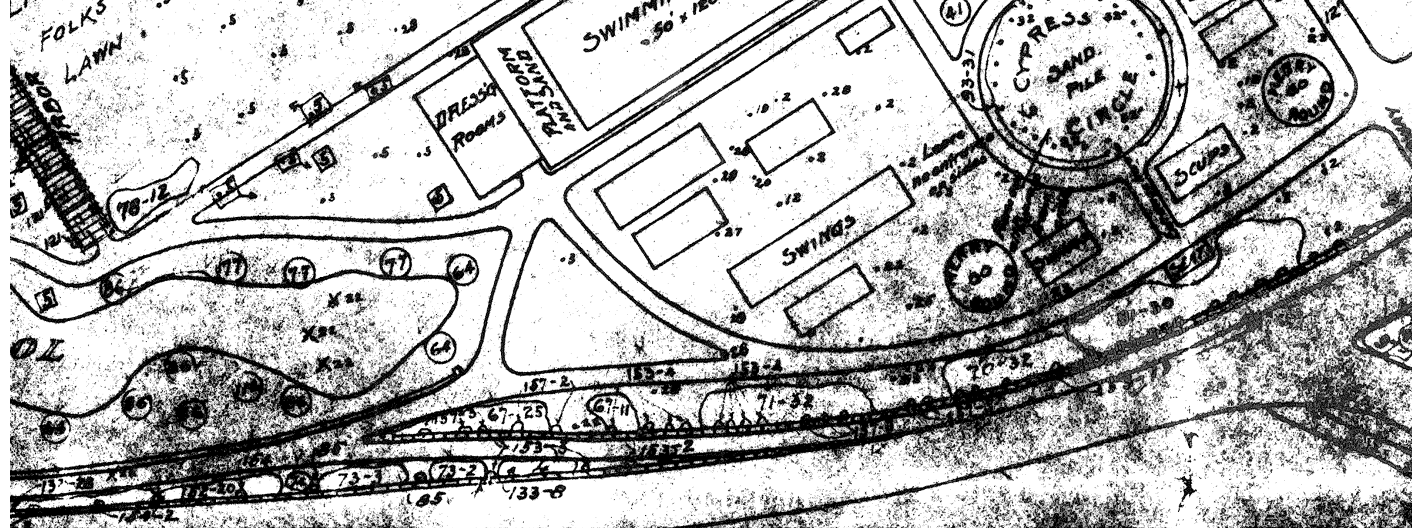


No.	Planting List	ft. apart	No. of Plants
1	Pampas Grass		
2	Pepper Tree		
3	Cottonwood Tree		
4	Date Palm		
5	Elm		
6	Fan Palm		
7	Camphor		
8	Acacia		
9	Eucalyptus		
10	Oak		
11	Locust		
12	Maple		
13	Alder		
14	Pecan		
15	Ailanthus		
16	Guava		
17	Redwood		
18	Shrubbery		
19	Catalpa		
20	Umbrella		
21	Grevillea		
22	Willow		
23	Pine		
24	Sycamore		
25	Mulberry		
26	Sterculia Diversifolia		
27	Alder		
28	Ash		
29	Yucca Palm		
30	Fig		
31	Walnut		
32	Cypress		
33	Magnolia		
34	Cedar		
35	Pomegranate		
36	Eucalyptus viminalis	20 "	13 "
	Manna Gum		
37	Quercus agrifolia	25 "	30 "
	Live Oak		
38	Acacia pycnantha	16 "	19 "
	Golden Wattle		
39	Lepidospermum laevigatum	8' "	49 "
	Australian Tea		
40	Ceanothus thyrsiflorus		4 "
	Mountain Lilac		
41	Schinus molle	25 "	32 "
	Pepper Tree		
42	Berberis aquifolium	3 "	30 "
	Mahonia		
43	Acacia saligna	20 "	- "
44	Acacia decurrens		2 "
	Green Wattle		
45	Acacia cyanophylla		- "
	Blue-leaved Wattle		
46	Acacia riceana		- "
47	Acacia baileyana	15 "	35 "
48	Ceratonia siliqua	10' "	31 "
	Co. ob Tree	also 15'	

NOTE:
Nos. 1 to 35
are existing planting

⊙ INDICATES TREE TO BE SAVED
 ⊠ " " " " MOVED
 X " " " " CUT
 ⊡ " PLACE FOR TREE THAT IS MOVED

No.	Planting List	ft. apart	No. of Plants	No.
49	Eugenia myrsifolia	12 "	- "	82
	Australian Brush Cherry			
50	Arbutus unedo	20 "	40 "	83
	Strawberry Tree			
51	Cumphora officinalis	35 "	- "	84
	Camphor Tree			
52	Magnolia grandiflora	40 "	21 "	85
	Southern Magnolia			
53	Platanus orientalis	20 "	16 "	86
	Sycamore			
54	Pittosporum undulatum	- "	- "	87
	Victorian Box			
55	Pittosporum eugenioides	15 "	25 "	88
	Tarata			
56	Eucalyptus robusta	10 "	25 "	89
	Swamp Yabogany Gum			
57	Pittosporum phillyraeoides	20 "	10 "	90
	Narrow-leaved Pittosporum			
58	Prunus lusitanica	20 "	- "	91
	Portugal Laurel			
59	Acacia melanoxylon	20 "	26 "	92
	Black Acacia			
60	Eucalyptus rudis	20 "	7 "	93
61	Eucalyptus polyanthema	20 "	8 "	94
	Red Box			
62	Eucalyptus globulus	15 "	- "	95
	Blue Gum			
63	Pittosporum rhombifolium	6 "	60 "	96
	Queensland Pittosporum			
64	Salix babylonica	6 "	45 "	97
	Weeping Willow			
65	Eucalyptus corymbosa	20 "	10 "	98
	Sugar Gum			
66	Prunus laurocerasus	6 "	48 "	99
	English Laurel			
67	Euonymus japonicus	3' "	25 "	100
	Evergreen Euonymus			
68	Cistus ladaniferus	4 "	30 "	101
	Crataegus pyracontha	6 "	60 "	102
	Evergreen Thorn			
70	Ligustrum japonicum	6 "	45 "	103
	Japanese Privet			
71	Ligustrum sinense	6 "	10 "	104
	Chinese Privet			
72	Umbellularia californica	8 "	132 "	105
	California Laurel			
73	Prunus ilicifolia	10 "	27 "	106
	Islay			
74	Prunus integrifolia	15 "	103 "	107
	Catalina Cherry			
75	Acacia latifolia	15 "	11 "	108
	Nuytenus bearia			
76	Nuytenus bearia	12 "	- "	109
	Maxter			
77	Salix babylonica decolorata	4 "	54 "	110
	Wisconsin Weeping Willow			
78	Cheisyala ternata	15 "	2 "	111
	Mexican Crane's			
79	Noelreuteria paniculata	- "	- "	112
	Varnish Tree			
80	Berberis darwinii	8 "	140 "	113
	Barberry			
81	Heteromeles arbutifolia			114
	Christmas Berry			



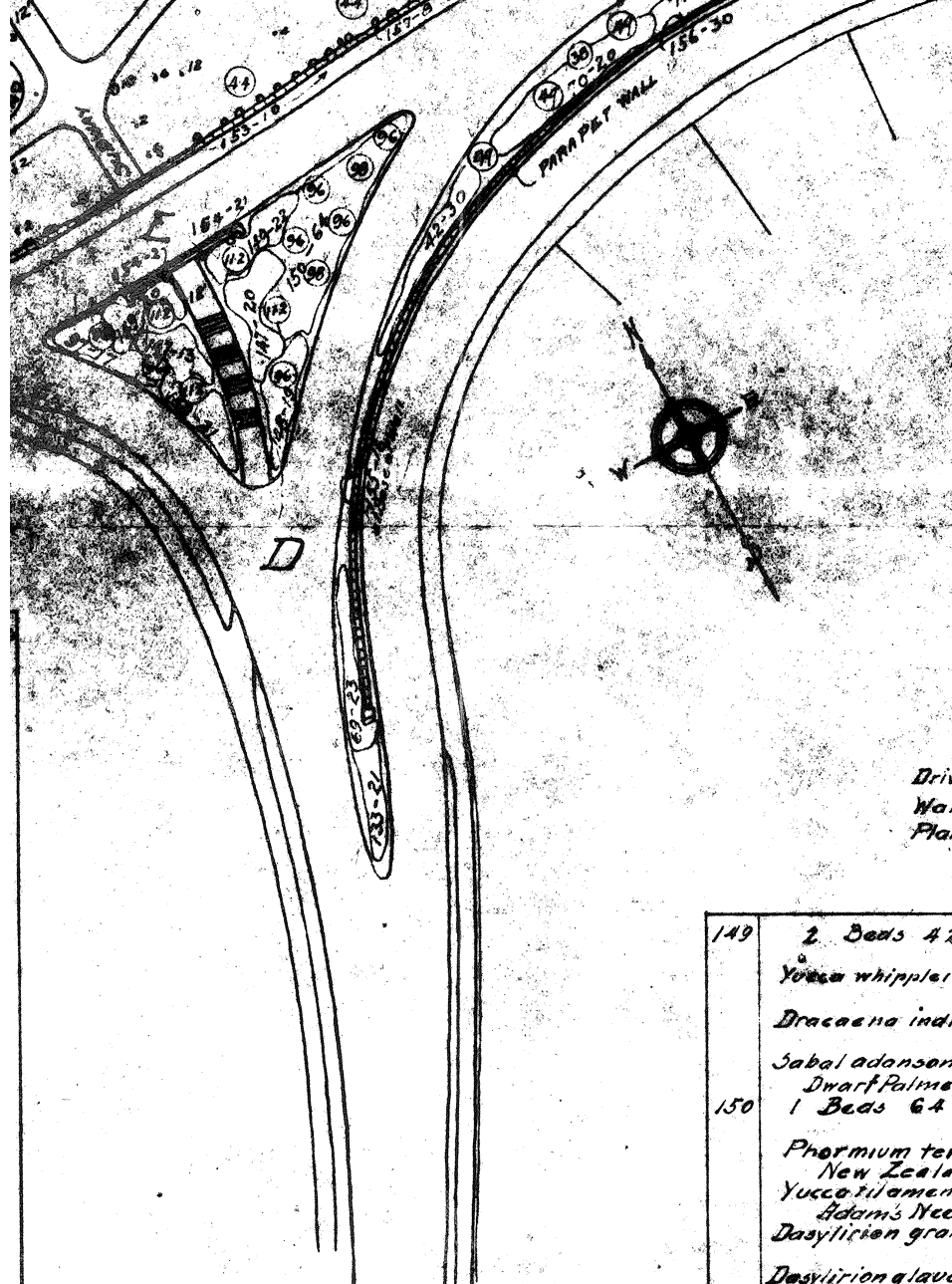
62	<i>Duranta plumieri</i> Ovalen Jar Drop	6 ft apart	58	Plants	115	<i>Hypericum moseirianum</i> Gold Flower	6 ft apart	100	Plants
63	<i>Abelia grandiflora</i> Hybrid Abelia	3 "	210	"	116	<i>Eucalyptus sideroxylen</i> resca		2	"
64	<i>Cistus laurifolius</i> and others Rock Rose	3 "	168	"	117	<i>Fuchsia riccartii</i>	5 "	7	"
65	<i>Tecoma grandiflora</i> Chinese Trumpet creeper		8	"	118	<i>Rosa laurigata</i> White Cherokee Rose	5 "	72	"
66	<i>Taxodium mucronatum</i> Montezuma Cypress		18	"	119	<i>Vinca minor</i> Periwinkle	12 "	50	"
67				"	120				"
68				"	121	<i>Wistaria chinensis</i> Chinese Wistaria		4	"
69				"	122	<i>Wistaria chinensis alba</i> White Chinese Wistaria		3	"
90	<i>Cedrus deodard</i> Deodar		5	"	123	<i>Wistaria magnifica</i> American Wistaria		6	"
91	<i>Cupressus lawsoniana</i> Lawson's Cypress			"	124	<i>Wistaria multijuga</i> Japanese Wistaria		5	"
92	<i>Quercus lobata</i> Valley Oak			"	125	<i>Wistaria multijuga alba</i> White Japanese Wistaria		9	"
93	<i>Taxus baccata fastigiata</i> Irish Yew	3 "	62	"	126	<i>Lonicera halliana</i> Japanese Honeysuckle	10 "	32	"
94	<i>Chamaerops exelsa</i> Windmill Palm	6 "	40	"	127	<i>Calycanthus floridus</i> Strawberry Shrub	3 "	2	"
95	<i>Bambusa</i> Dwarf Bamboo	4 "	50	"	128	<i>Genista andreaea</i>	4 "	72	"
96	<i>Corypha australis</i> Fanpalm		13	"	129	<i>Akebia quinata</i> Five-leaved Akebia	8 "		"
97	<i>Phormium tenax</i> New Zealand Flax	4 "	144	"	130	4 Beds 400 Plants	18 "		"
98	<i>Phoenix reclinata</i> Dwarf Date Palm		25	"		<i>Iris kaempferi</i> Japanese Iris, blue		200	"
99	<i>Phoenix canariensis</i> Cand. Y. Island Palm		7	"		<i>Iris kaempferi</i> Japanese Iris, white		200	"
100	<i>Washingtonia robusta</i> Slender Fan Palm		22	"	131	<i>Miscanthus japonica</i> Japanese Eulalia	6 "	18	"
101	<i>Jubaea spectabilis</i> Honey Palm		3	"	132	<i>Hemerocallis aurantiaca</i> Japanese Day Lily	18 "	30	"
102	<i>Washingtonia filifera</i> California Fan Palm		9	"	133	<i>Cotoneaster microphylla</i>	3 "	90	"
103	<i>Cocos australis</i> Pindo Palm		3	"	134	<i>Platycodon grandiflorum</i> Chinese Bellflower	12 "	70	"
104	<i>Arundinaria japonica</i> (Nata) 6 Erica Bamboo	6 "	20	"	135	<i>Dracaena australis</i>	5 "	40	"
105	<i>Phyllostachys aurea</i> Golden Bamboo	4 "	55	"	136	<i>Dracaena indivisa</i>	4 "	65	"
106	<i>Dendrocalamus latifolius</i> Giant Bamboo	7 "	46	"	137	<i>Yucca whipplei</i>	3 "	94	"
107	<i>Phyllostachys mitis</i> Noble Bamboo			"	138	<i>Yucca baccata</i> Spanish bayonet	3 "	108	"
108	<i>Bambusa vulgaris</i> Arching Giant Bamboo	6 "	7	"	139	<i>Tritoma uvaria</i> Red-hot Poker Plant	2 1/2 "	35	"
109	<i>Phyllostachys quilliei</i> Giant Bamboo	10 "	11	"	140	<i>Nelumbium luteum</i> American Lotus		10	"
110	<i>Nandina domestica</i>	4 "	24	"	141	<i>Nelumbium speciosum</i> Indian Lotus		10	"
111	<i>Yucca filamentosa</i> Adam's Needle	3 "	215	"	142	<i>Iris germanica</i> , blue & white German Iris	15 "	100	"
112	<i>Phoenix stricta</i>		14	"	143	<i>Corceopsis lanceolata</i> Tidseed	15 "	100	"
113	<i>Sophora japonica</i> Pagoda Tree		4	"	144	<i>Populus deltoides</i> Cottonwood			"
114	<i>Ginkgo biloba</i> Magen-hai Tree		7	"					"

145

146

147

148



FAIRMOUNT RIVERSIDE, PLANTING

Scale

Olmsted Brothers,
Brookline, Mass., at
Jun

Drives 24 ft wide
Walks 8 "
Planty Strips 6" minimum

No.	Bed	Plants	Sp. Apart	No. of Plants
145	1 Bed	68 Plants	4'	
		<i>Yucca baccata</i>	30	"
		Spanish Bayonet		
		<i>Dracaena australis</i>	13	"
		<i>Dracaena indivisa</i>	10	"
		<i>Yucca whipplei</i>	5	"
146	<i>Rosa setigera</i>	5	"	8
	Prairie Rose			
147	2 Beds	33 plants	5'	
		<i>Agave americana</i>	10	
		Century Plant		
		<i>Dasyliiron glaucophyllum</i>	10	
		<i>Dasyliiron graminifolium</i>	13	
148	2 Beds	40 Plants	4'	
		<i>Dasyliiron graminifolium</i>	20	
		<i>Yucca filamentosa</i>	20	
		Adam's Needle		

No.	Bed	Plants	Sp. Apart	No. of Plants
149	2 Beds	42 Plants	4'	Not Used
		<i>Yucca whipplei</i>	10	162
		<i>Dracaena indivisa</i>	17	163
		<i>Sabal adansonii</i>	15	164
		Dwarf Palmetto		165
150	1 Bed	64 Plants	4'	166
		<i>Phormium tenax</i>	20	167
		New Zealand Flax		
		<i>Yucca filamentosa</i>	19	168
		Adam's Needle		
		<i>Dasyliiron graminifolium</i>	15	169
		<i>Dasyliiron glaucophyllum</i>	10	170
151	2 Beds	Plants	12"	Not Used
		<i>Cyrtomium falcatum</i>		171
		Holly Fern		
		<i>Pteris aquilina</i>		172
		<i>Nephrolepis tuberosa</i>		173
		<i>Woodwardia radicans</i>		174
		<i>Asplenium filix-femina</i>		175
152	<i>Cotoneaster rotundifolia</i>	3'	23	176
153	<i>Hedera helix</i>		50	177
	English Ivy			
154	<i>Ampelopsis quinquefolia</i>		12	178
	Woodbine			
155	<i>Ampelopsis verticilli</i>	10'	26	179
	Boston Ivy			
156	<i>Ampelopsis heterophylla</i>	10'	46	180
	Asiatic Creeper			
157	<i>Hedera colchica</i>	10'	21	181
	Caucasian Ivy			
158	<i>Acacia floribunda</i>	16'	42	182
159	<i>Quercus suber</i>		26	183
	Cork Oak			
160	<i>Erythraea edulis</i>		12	184
161	<i>Cocos datil</i>		9	185

FAIRMOUNT PARK

RIVERSIDE, CALIFORNIA

PLANTING PLAN

Scale 60'-1"



Olmsted Brothers, Landscape Architects
Brookline, Mass., and San Diego, Cal.

June 6, 1911.

2.4 ft wide
8"
10s 6" minimum

6

Study H.A.A.
Traced H.A.B., A.B.
Checked H.A.B. June 21, 11

Revised Aug. 17, 1911. at San Diego, Cal.
Revised Sept. 17, 1911. Riverside, Cal.

10	4 ft apart Not Plant	162 <i>Bocconia frutescens</i>	8' apart, 5 plants
	10	163 <i>Melianthus major</i>	5 "
	17	164 <i>Erythra brandegei</i>	3 "
	15	165 <i>Russelia juncea</i>	50 "
15	4' "	166 <i>Senecio potasitis</i>	5 "
7ax	20	167 <i>Caesalpinia echinata</i>	15' " - "
	19	168 <i>Myoporum laetum</i>	15' " 39 "
ilium	15	169 <i>Melaleuca alba</i>	6' " 284 "
ium	10	170 <i>M. hypericifolia</i>	6' " 40 "
3	12" Not used	171 <i>M. decussata</i>	6' " 135 "
m	"	172 <i>Escallonia rubra</i>	5' " 100 "
	"	173 <i>E. organensis</i>	5' " 100 "
osa	"	174 <i>E. virgata</i>	8' " 100 "
is	"	175 <i>Persea indica</i>	15' " 30 "
mina	"	176 <i>Metrosideros robusta</i>	10' " 30 "
	"	Bottle Brush	
'folia 3'	23 "	177 <i>Acacia pravissima</i>	12' " 16 "
	50 "	178 <i>Agave, Foucroya, Aloe, etc</i>	2' " 100 "
quefolia	12 "	179 <i>Achania malvaescum</i>	10' " 20 "
	"	Turks Cap	
i 10'	26 "	180 <i>Hypericum floribundum</i>	5' " 20 "
phylla 10'	46 "	181 <i>Acacia verticillata</i>	12' " 20 "
	10'	182 <i>Ceanothus spinosus</i>	8' " 4 "
	"	Mountain Lilac	
16'	42 "	183 <i>Solanum rantonetti</i>	6' " 5 "
	26 "	184 <i>Myoporum acuminatum</i>	12' " 5 "
	18 "	185 <i>Duranta alba</i>	6' " 8 "
	9	186 <i>Teucrium fruticans</i>	8' " 5 "
		187	

1-116-80A