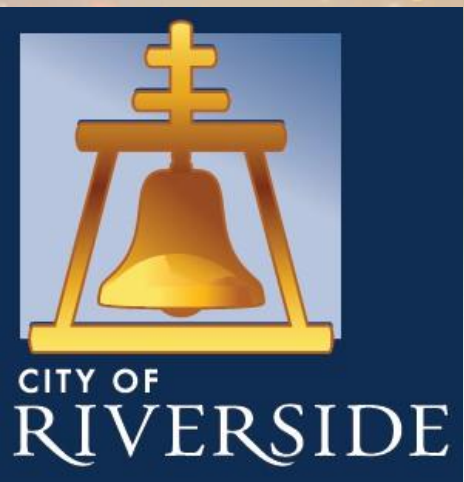


AIRPORT MANAGER'S REPORT

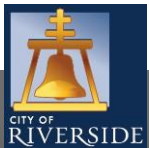
Airport Commission
December 12, 2024



BACKGROUND

This Report is provided to inform the Airport Commission about operations, City Council actions, events, meetings and other issues concerning the Riverside Airport.

This update includes information about Airport operations, financials, activities, events, and investment in infrastructure.



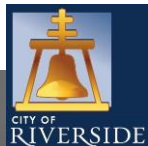
OPERATIONAL ACTIVITY



OPERATIONAL ACTIVITY

Aircraft Operations			
Prior Year Quarter Versus Current Year Quarter	Jan-Oct 2023	Jan-Oct 2024	Year to Date
	110,305	123,419	+11.8%
Prior Year Month Versus Current Year Month	Oct 2023	Oct 2024	
	12,434	12,445	0%

Note: Excessive heat and wildfire smoke in September.
 FAA aircraft operations statistics are reported on a calendar year basis.
 Average 329 operations daily.



FINANCIAL ACTIVITY



FINANCIAL ACTIVITY

July 1, 2024-October 31, 2024

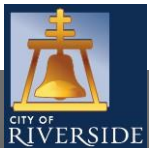
	Operating Budget	Actual	% to Budget
Expenditures ⁽¹⁾	\$2,030,540.58	\$646,739.28	31.9% ³
Revenue ⁽²⁾	\$1,971,935.00	\$646,456.60	32.8%

Notes

¹ Including adjustments and encumbrances

² Preliminary figures as of 11/4/24

³ 33.3% complete with FY. If on budget, actual amounts should be 33.3% to budget.



HIGHLIGHTS



BIKE RACKS



CREDIT CARD MACHINE



EMERGENCY GENERATOR



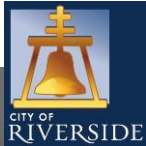
FAA FSDO SUPPLEMENTAL

- Now that the FAA has moved back into their building, monthly rent has increased from \$1,512.19 to \$12,382.08.

DOOLITTLE CAMERA

The screenshot displays a security monitoring interface with the following components:

- Search Panel (Left):** A list of camera locations including CAVU NW, CAVU West, CBU Tie-Down North, CBU Tie-Down NW, CBU Tie-Down South, CBU Tie-Down West, Doolittle - Camera - 02, Doolittle - Camera - 03, Doolittle - Camera - 04, **Doolittle - Camera - 05 Stit** (highlighted), Doolittle - Camera - 01, Flight Rd - 5 Stitched, Flight Rd North - 2, Flight Rd South - 3, Flight Rd SW - 4, Flight Rd West - 1, Flight Road, Gate 1 Camera Combo, Gate 1 East, Gate 1 North, Gate 1 South, Gate 1 Gate, Gemende Tie-Down Camera, Gemende Tie-Down East, Gemende Tie-Down North, Gemende Tie-Down NW, Gemende Tie-Down West, Lower PAP - West, Lower PAP Combo, Lower PAP East, Lower PAP East End - East, Lower PAP East End - North, Lower PAP East End - Northea, Lower PAP East End - West, Lower PAP NE, Lower PAP NW, Lower PAP West, PAP Washrack, and PAP Washrack Combo.
- Camera Feeds:** Four live video feeds are shown:
 - 1 Doolittle - Camera - 02:** A wide-angle view of a road with a white car in the distance.
 - 2 Doolittle - Camera - 03:** A view from an elevated position looking down at a road and a grassy embankment.
 - 3 Doolittle - Camera - 04:** A view of a road with a utility pole in the foreground.
 - 4 Doolittle - Camera - 05 Stitched:** A 2x2 grid of smaller camera feeds showing different perspectives of the road area.
- Control Panel (Right):** A vertical toolbar with a 'Live' indicator, playback controls (rewind, play, fast forward), 'REC' button, and various camera control icons. Below it is a 'Tile' section with icons for window management.
- Bottom Bar:** A navigation bar with buttons for 'Hide area view', 'Monitoring (0)', 'Synchronize video', 'Change tile pattern', 'Clear all', 'Open the Vault', 'Switch to map mode', and 'Hide controls'.



AIRPORT PERIMETER FENCE ON CENTRAL



AIRPORT PERIMETER FENCE ON CENTRAL



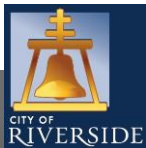
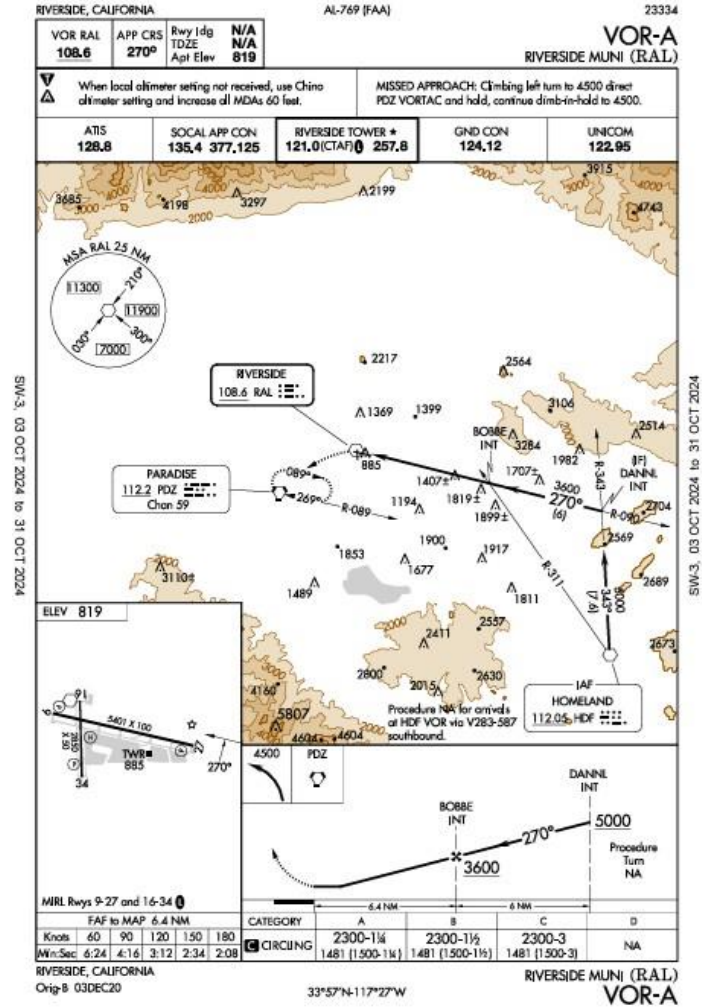
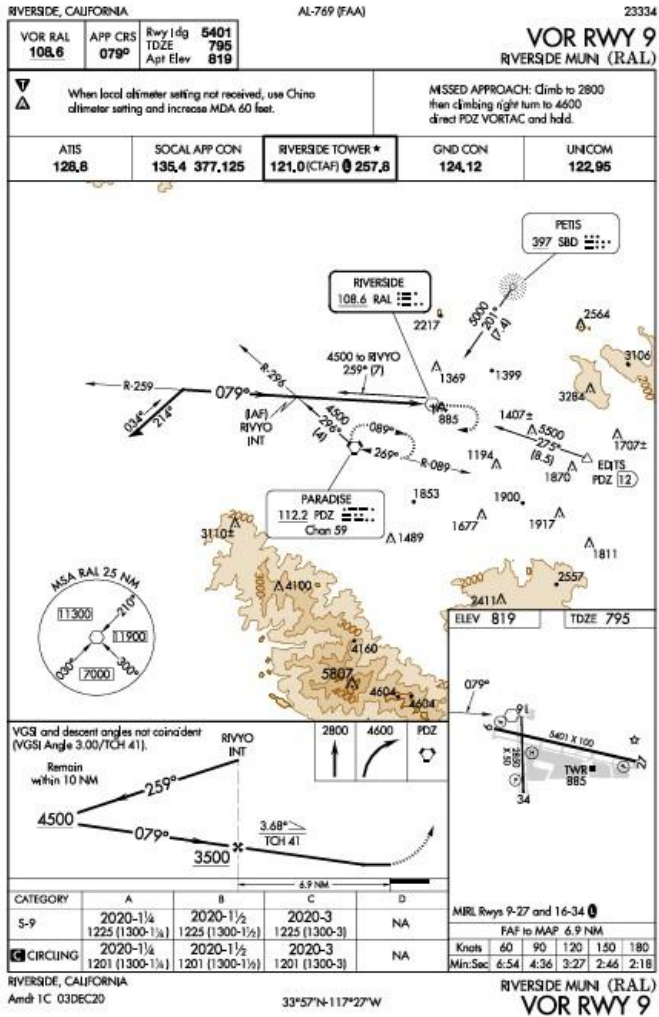
TERMINAL RESTROOM RENOVATIONS



DIGITAL SIGNAGE



VOR APPROACHES



3RD ANNUAL PLANES & TREATS



3RD ANNUAL PLANES & TREATS



3RD ANNUAL PLANES & TREATS



3RD ANNUAL PLANES & TREATS



3RD ANNUAL PLANES & TREATS



3RD ANNUAL PLANES & TREATS



3RD ANNUAL PLANES & TREATS



3RD ANNUAL PLANES & TREATS



3RD ANNUAL PLANES & TREATS



3RD ANNUAL PLANES & TREATS



3RD ANNUAL PLANES & TREATS



3RD ANNUAL PLANES & TREATS



3RD ANNUAL PLANES & TREATS



3RD ANNUAL PLANES & TREATS

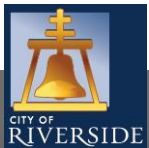


3RD ANNUAL PLANES & TREATS



CITY COUNCIL

- **Recent City Council Actions:**
 - \$5M EV Charging Grant Application
 - FAA FSDO Supplemental Agreement
- **Upcoming Council and Committee Action:**
 - Taxiway A Rehab Construction Agreement



RECOMMENDATION

- That the Airport Commission receive this December 2024 Report.

STRATEGIC PLAN ALIGNMENT

Strategic Priority No. 5 – High Performing Government

Goal No. 5.3 – Enhance communication and collaboration with community members to improve transparency, build public trust, and encourage shared decision-making.



Community Trust



Fiscal Responsibility



Sustainability &
Resiliency



Equity



Innovation