



RIVER DISTRICT FEASIBILITY STUDY

**Parks, Recreation and Community Services
Department**

Park and Recreation Commission

July 21, 2025



PARKWAY & OPEN SPACE PLAN

Expanding the River's Reach



March 14, 2018





RECONNECTING RIVERSIDE with its **RIVER:**
Integrating Historical and Urban Ecology
for a Healthier Future

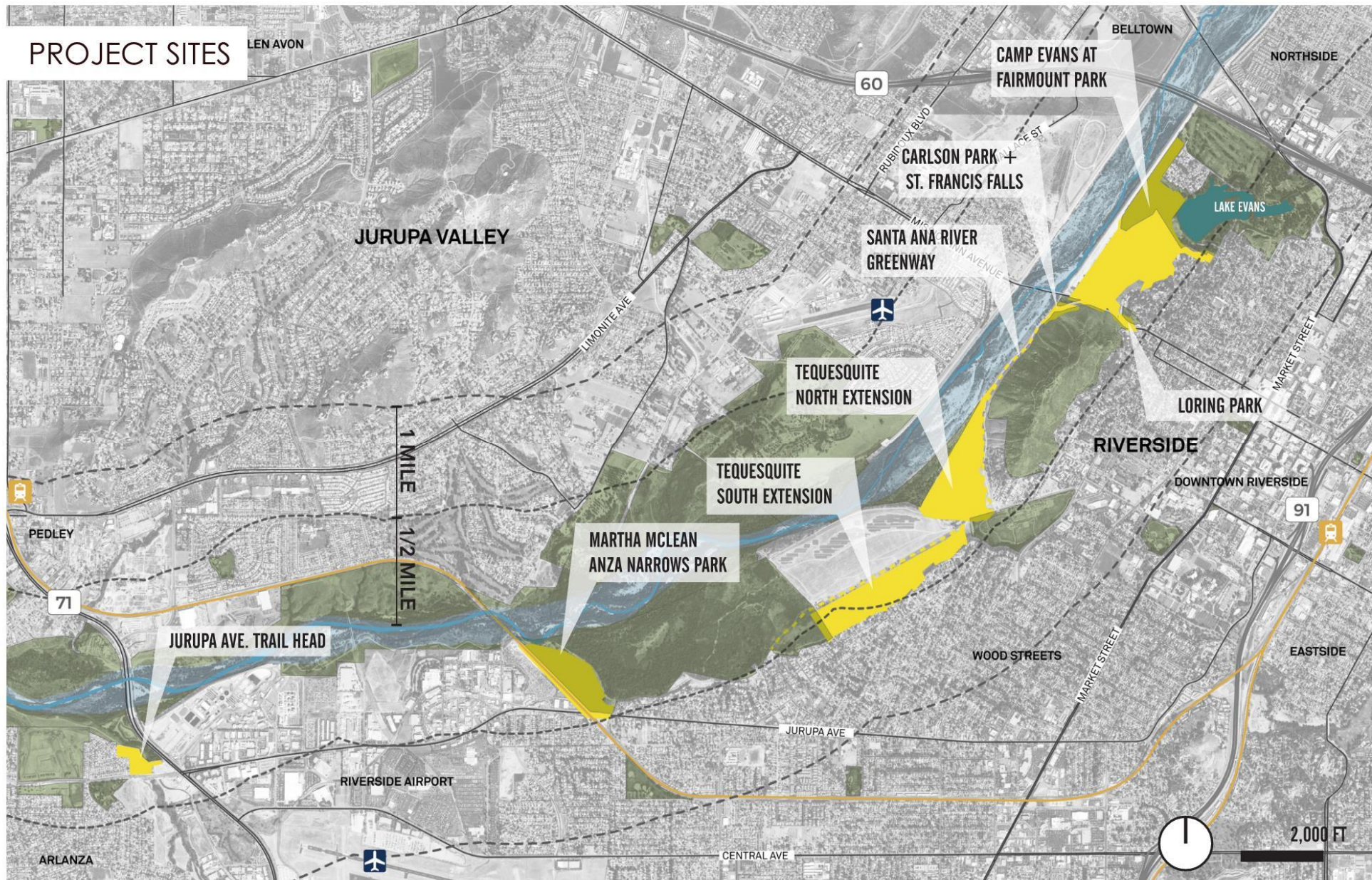


SFEI
San Francisco Estuary Institute



RiversideCA.gov

PROJECT SITES





View north from Jurupa Ave site towards Jurupa Valley and Mount Jurupa in the distance

JURUPA VALLEY



View across the North Tequesquite site highlighting the gradual and gentle topography as the site meets the river edge



View from Mount Rubidoux looking across the Santa Ana River into Jurupa Valley



View from Saint Francis Fall looking at Mount Rubidoux



North-east view along the eastern river's levee. Camp Evans with abundant vegetation is on the right hand side



Expansive View of the Santa Ana River as it goes along Matha McLean Park and De Anza Narrows



View of the Santa Ana River Greenway going under the Union Pacific Railroad Bridge



Views of North Tequesquite on the foreground and Mount Rubidoux in the background



Great views towards Downtown Riverside from Loring Park



The Problem Statement

Most Riversiders don't even know that there is a river, they don't know how to access the river, and they don't feel safe near the river.



SHADED OVERLOOK



PLAY SPACE



EDUCATIONAL WATER PLAY ARROYO



The Goal

‘Put the river back in Riverside’ by creating a public realm that will be environmentally and fiscally sustainable and will connect the community to the river.



RIVER DISTRICT COMMUNITY MEETING

THURSDAY, MARCH 14, 2024 • 4:30 P.M.
FAIRMOUNT PARK • 2601 FAIRMOUNT BLVD.
Meet at Armory Behind Train



**Walk Around
Fairmount Park**
(Meet at the Armory)
4:30 p.m.



**Meet &
Greet**
5:30 p.m.



**Visioning and Breakout Sessions
for the River District,
Fairmount Park & Armory**
6 - 8 p.m.

RSVP at Parks@RiversideCA.gov



FOR MORE INFORMATION, CONTACT
Parks@RiversideCA.gov | (951) 826-2000

    **@RivParks**
#ILoveRiversideParks





JOIN US IN-PERSON OR ON TEAMS
ÚNASE A NOSOTROS EN PERSONA O EN TEAMS



INDIGENOUS PEOPLES CONVENING ON THE
REUNIÓN DE PUEBLOS INDÍGENAS SOBRE EL DISTRITO DEL RÍO

RIVER DISTRICT

TUESDAY, SEPTEMBER 10, 2024
MARTES, 10 DE SEPTIEMBRE DE 2024

MAYOR'S CEREMONIAL ROOM | 3900 MAIN ST.
SALA CEREMONIAL DEL ALCALDE

MEETING TIME : 2 - 4 P.M.
HORA DE LA REUNIÓN :

Email SCampbell@riversideca.gov to RSVP

Envíe un correo electrónico a SCampbell@riversideca.gov para confirmar su asistencia

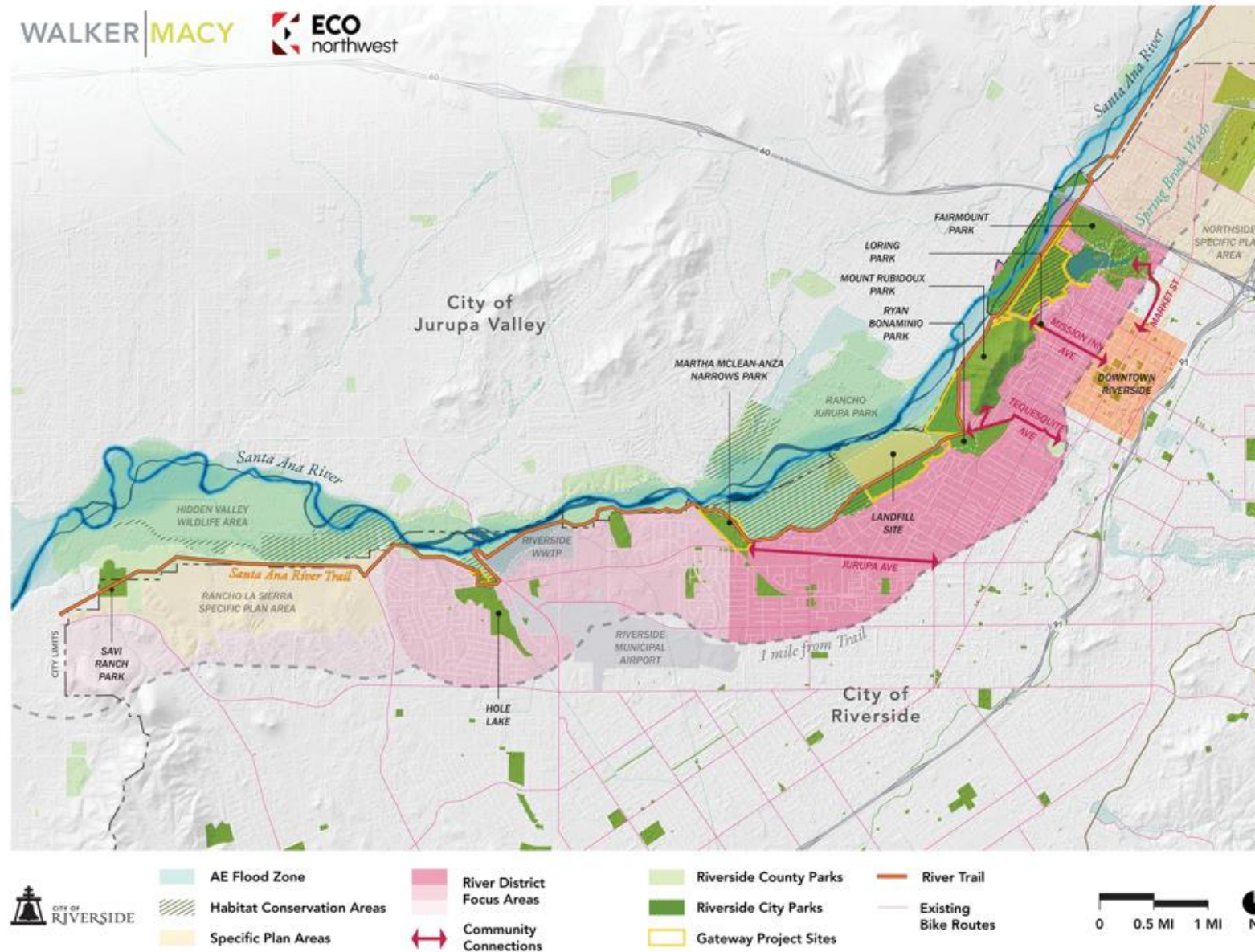
TEAMS LINK TO BE SENT AFTER RSVP
ENLACE DE TEAMS SE ENVIARÁ DESPUÉS DE CONFIRMAR ASISTENCIA

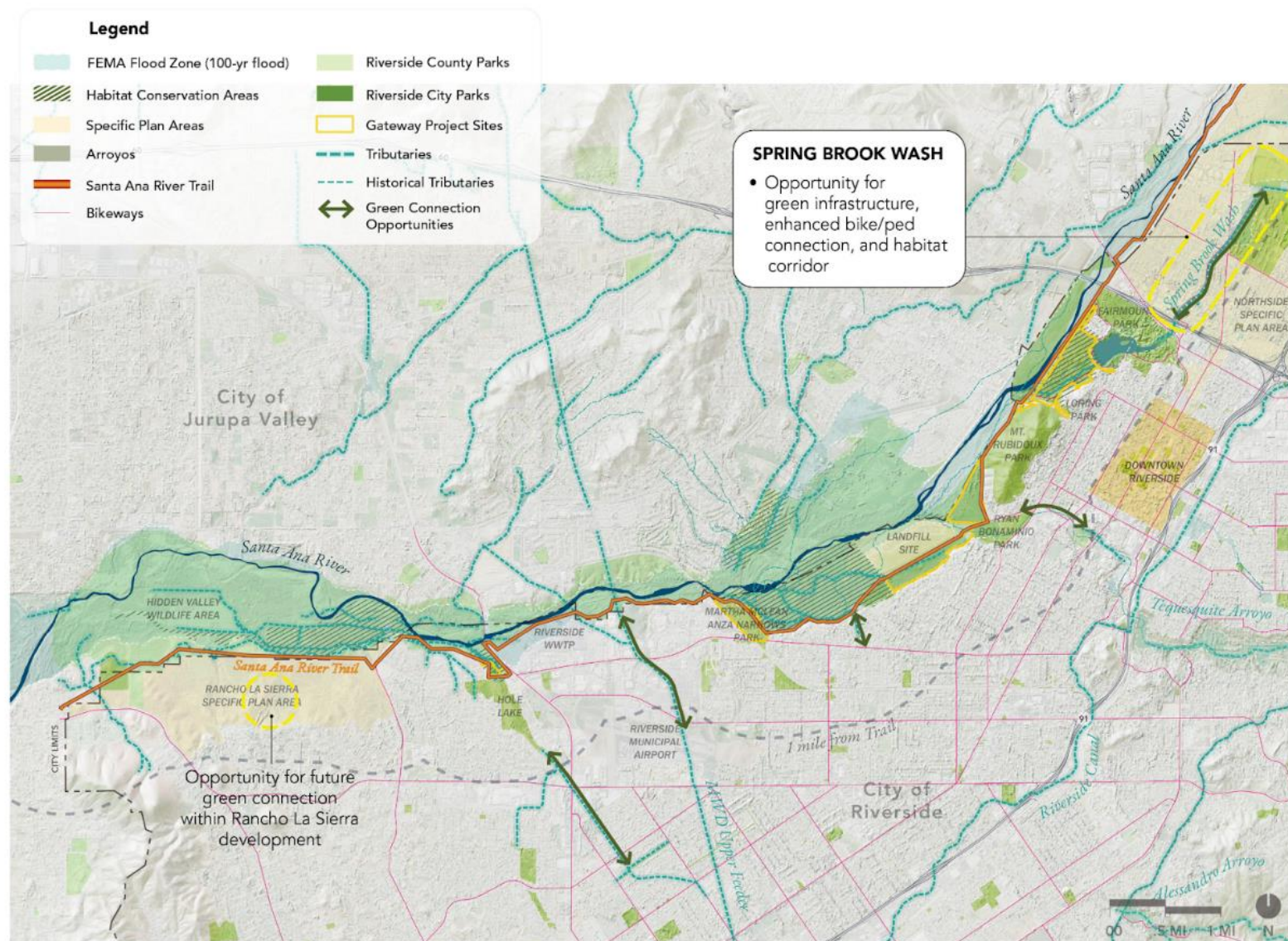


FOR MORE INFORMATION, VISIT OR CALL
PARA MÁS INFORMACIÓN, VISITE O LLAME
RivReg.org | 951.826.2000

    @RivParks
#ILoveRiversideParks

RiversideCA.gov





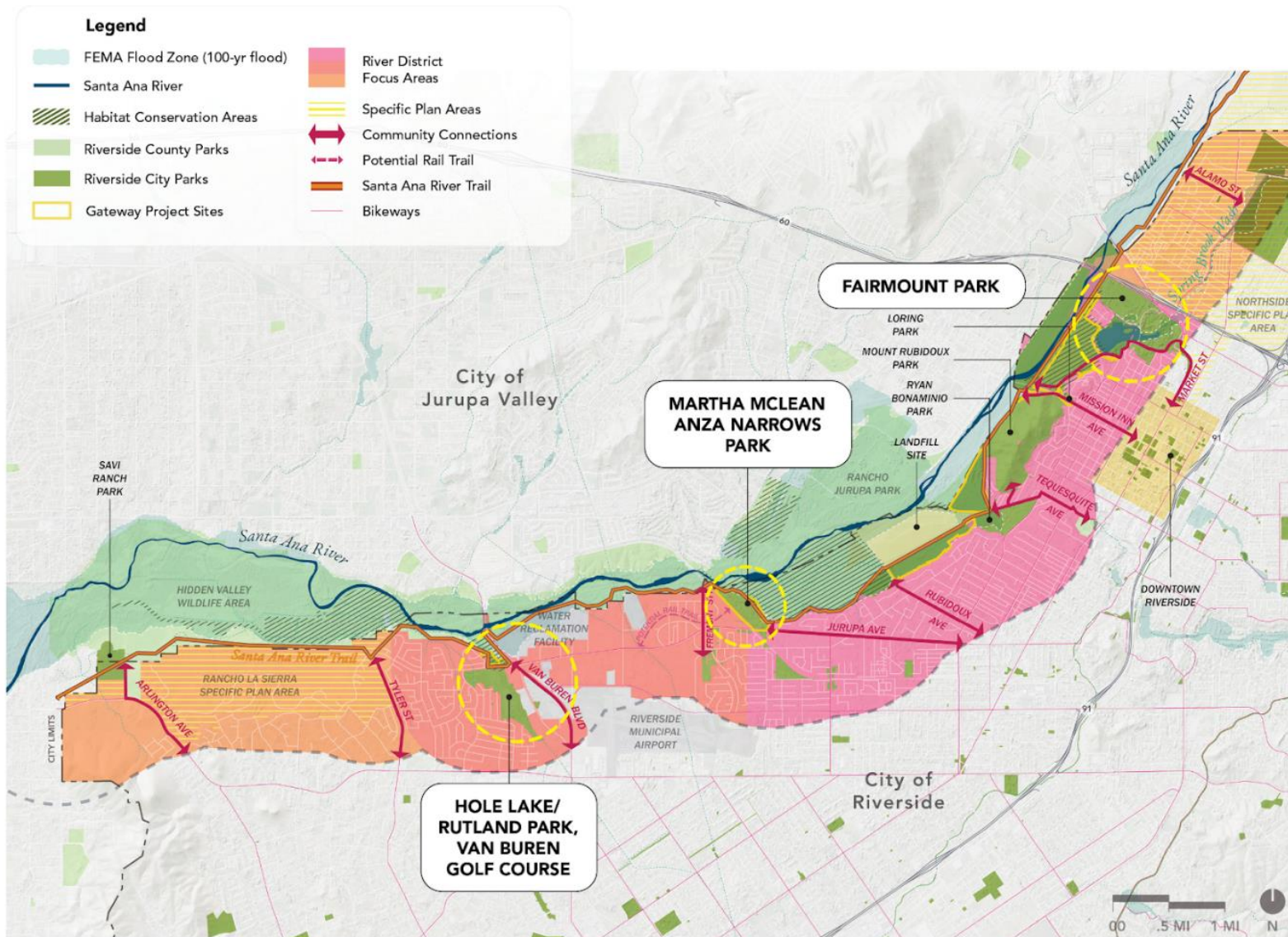
River Tributary Opportunities

Riverside River District

WALKER | MACY

ECO northwest





Potential Catalyst Sites

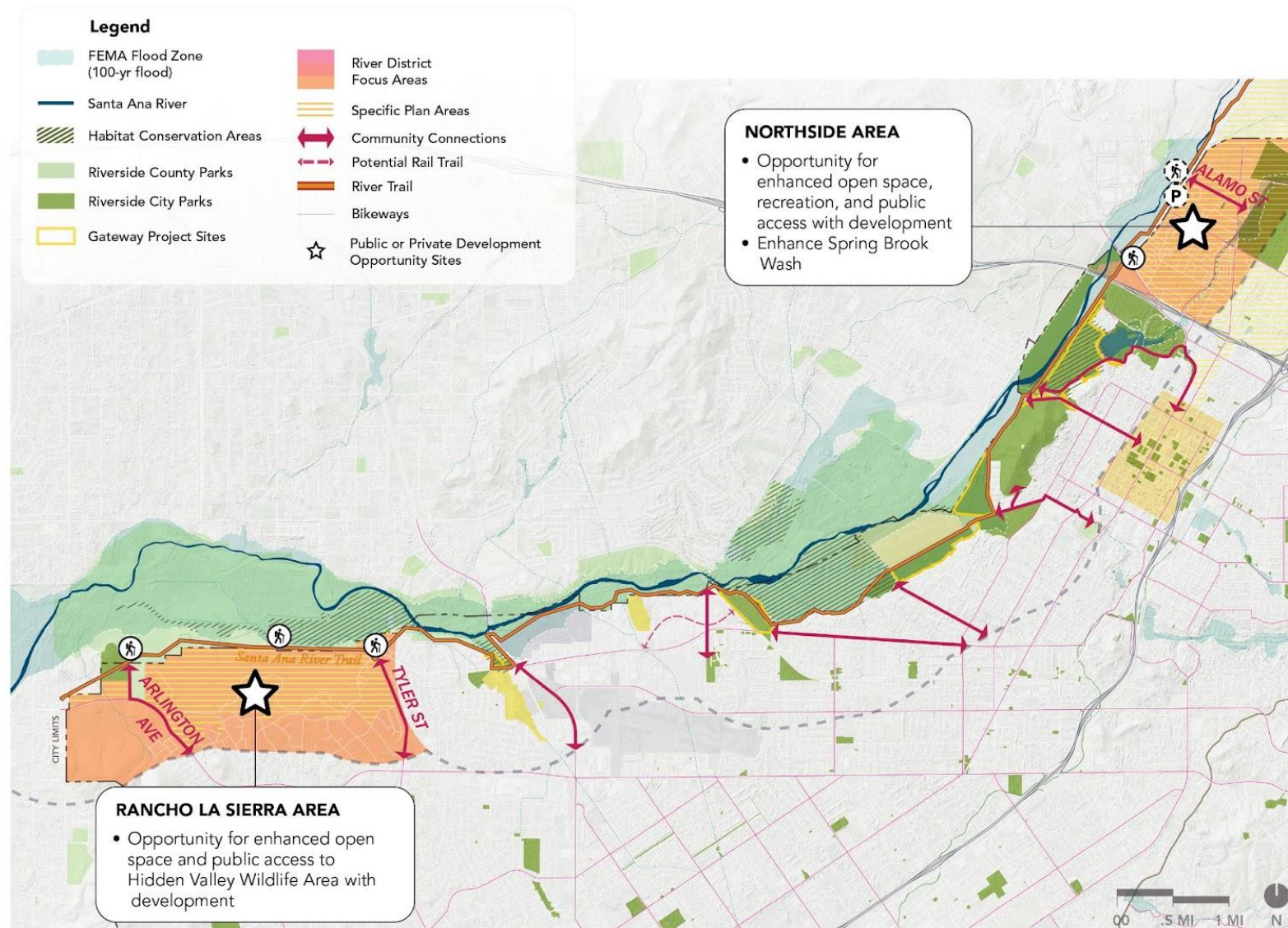
Riverside River District



WALKER | MACY

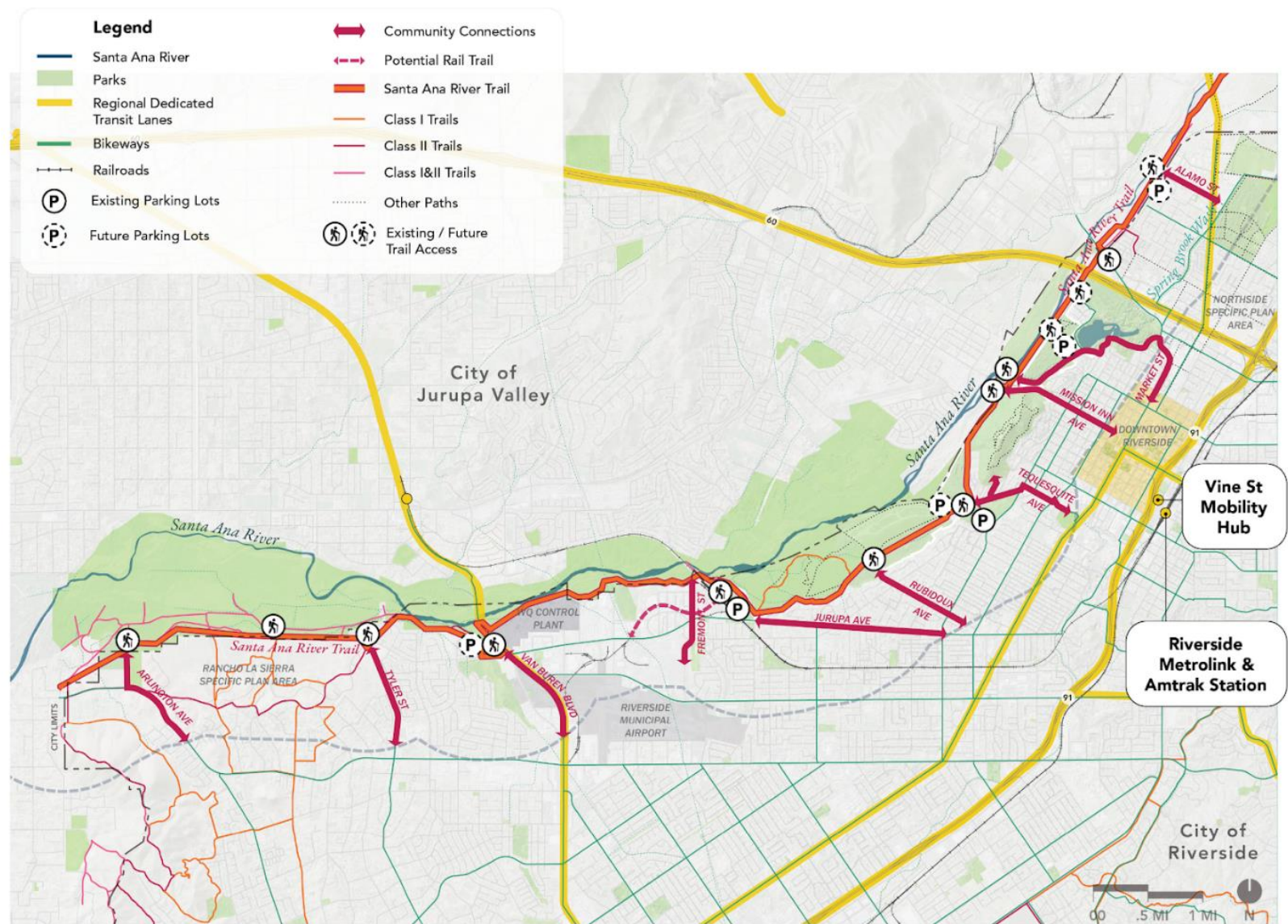
ECO northwest





Focus Area Opportunities

Riverside River District



Circulation & Access

Riverside River District

WALKER | MACY

ECO northwest



Plan for Success!



Build It



Maintain It



Program It



Secure It



Replace It



Habitat and native landscape restoration

Consistent fencing designed to protect sensitive habitat areas

Branded wayfinding & environmental education signage

Accessible connections from public open spaces to the Santa Ana River Trail, including vehicular restrictions

Native restored landscapes and pollinator gardens

Trailhead amenities including branded wayfinding signage, art, seating, drinking fountains, waste receptacles, etc.

Public overlooks, seating, and activity areas along the trail

Clearly defined areas for public access to the water, including light watercraft









Fiscally Sustainable

Financial Toolbox

- revenue funds
- endowment
- private investment to help fund public amenities

Partnerships

- private sector
- non-profit organizations and conservancies
- public agencies



Environmental Challenges

- Trash
- Water quality
- Flood
- Erosion
- Invasive plants and animals
- Heat
- Fire



Environmentally Sustainable

Environmental opportunities include:

- Resilience through climate adapted plants and shade
- Thoughtful restoration with native plants
- Reduce fire fuel by removing flammable invasive plants such as mustard and tumbleweed
- Increase awareness through education, volunteers, and community events

24



Art Opportunities



**FAIRMOUNT
FORWARD** COMMUNITY MEETING

THURS,
JUNE 26 | 5 - 8 P.M.

THE **ARMORY**
AT FAIRMOUNT PARK

2501 FAIRMOUNT BLVD.

Interactive Site Map,
Development Updates,
Community Voice Input
Opportunities

PRESERVING WHAT MATTERS, PLANNING WHAT'S NEXT

CITY OF RIVERSIDE
PARKS RECREATION AND
COMMUNITY SERVICES

FAIRMOUNT PARK
MASTER PLAN

RECOMMENDATION

That the Park and Recreation Commission receive an update on the River District Feasibility Study; provide feedback and accept the report for file.