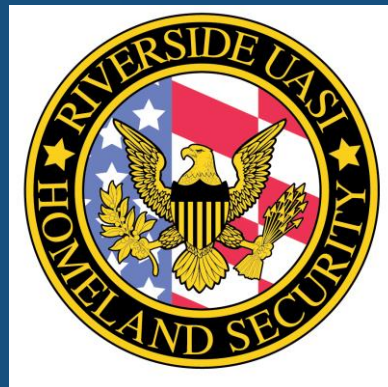


# City of Riverside Fire Department Office of Emergency Management

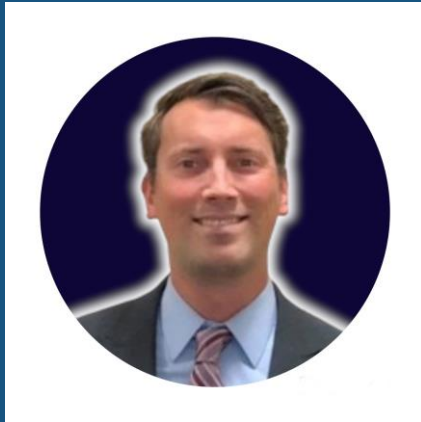
**STAY SAFE. STAY READY.**  
— READY RIVERSIDE —

[READYRIVERSIDE.ORG](http://READYRIVERSIDE.ORG)

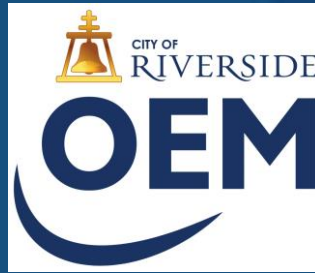


# Office of Emergency Management

## Who are we?



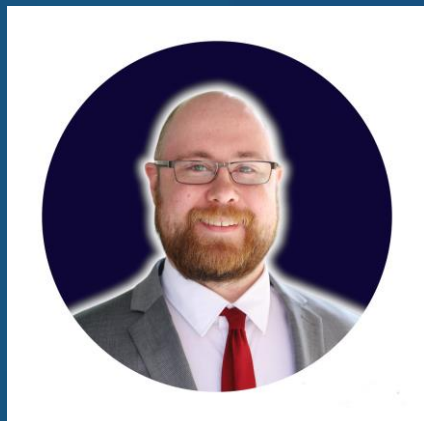
Emergency Services Administrator  
Mark D. Annas



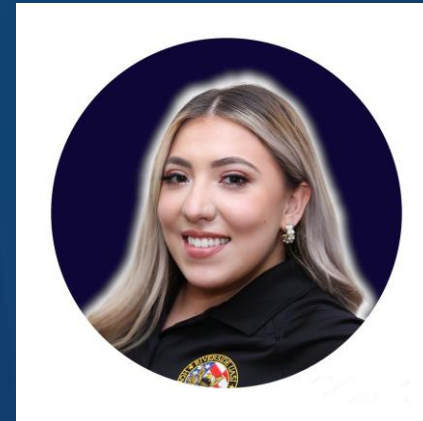
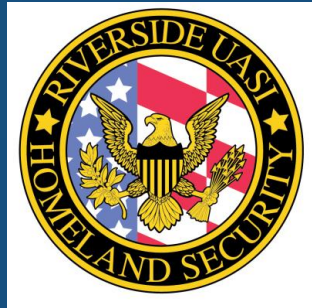
Sr. Management Analyst  
Marilene (Lenny) Cabanlit



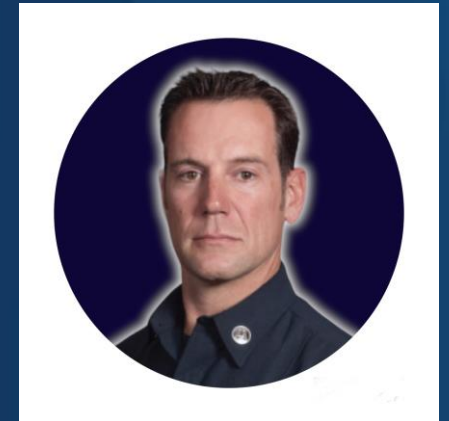
Emergency Services Coordinator  
Peter Sellas



Community Preparedness Coordinator  
Phillip Stachelski



Account Clerk II  
Reyna Bustos



UASI Training Coordinator  
Capt. Shannon Smith



# Office of Emergency Management

## Phases of Emergency Management

### Mitigation

- Prevent Impact
- Examples:
  - Engineered Structures (Base Isolation)
  - Levees & Dams
  - Anchoring Furniture/Water Heaters

### Preparedness

- Prepare for Impact
- Examples:
  - Training
  - Equipment & Facilities
  - Insurance

### Response

- Deal with Impact
- Examples:
  - Search & Rescue
  - Shelter/Shelter-in-Place
  - Evacuation
  - Family Communication Plan

### Recovery

- Restore from Impact
- Examples:
  - Debris Clearing
  - Building Inspections
  - Insurance Claims



# Office of Emergency Management

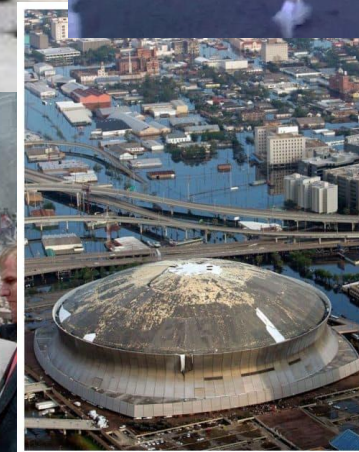
## Why Prepare?

Following a major disaster, Emergency Response won't be available immediately.

You should start your plan assuming the need for 72 hours of self-reliance, then extended it from there.

After Hurricane Katrina, the Superdome and Convention Center were not fully evacuated for 6 days (Aug. 29 – Sept. 4).

Other areas took even longer to receive help.





# Office of Emergency Management

## How to Prepare – 4 Steps

### Make A Plan



### Build A Kit



### Be Informed



### Get Involved





# Office of Emergency Management

## How to Prepare – 4 Steps

### Make A Plan



- 4 Questions
  - How will I receive emergency alerts & warnings?
  - What is my STAY plan?
  - What is my GO plan?
  - How will I communicate with my family/friends/support structure?
- Consider Specific Needs (Medical, Language, Dietary, Pets & Animals, etc.)
- Written Down/Able to reference?
- What's the backup plan?
- Practice! Make it reflexive!



# Office of Emergency Management

## How to Prepare – 4 Steps

### Build A Kit



- What might you need considering the above plan?
- What do you already have?
- Where will you store them?
- What is your maintenance plan?
- What about in your car, at work, or while travelling?



# Office of Emergency Management

## How to Prepare – 4 Steps

### Be Informed



- Alerts & Warnings
  - RiversideAlert (or Alert RivCo)
  - Wireless Emergency Alerts (WEA) & Emergency Alert System (EAS)
  - ShakeAlert & Siren Systems
- Know your hazards!
  - Natural, Technological, & Sociological/Human-Caused Hazards
    - Consider the effect of cascading or combining hazards.
  - Consider specific things to know for common hazards.
    - Earthquakes: Drop, Cover, and Hold On
    - Wildfires: Evacuation Warning vs Order
    - Flooding: 6 in of fast-moving water can knock a person over. Only 1 ft can carry a small car.
    - Cybersecurity: 2-factor Authentication; No more “fun” quizzes; Update & Backup files

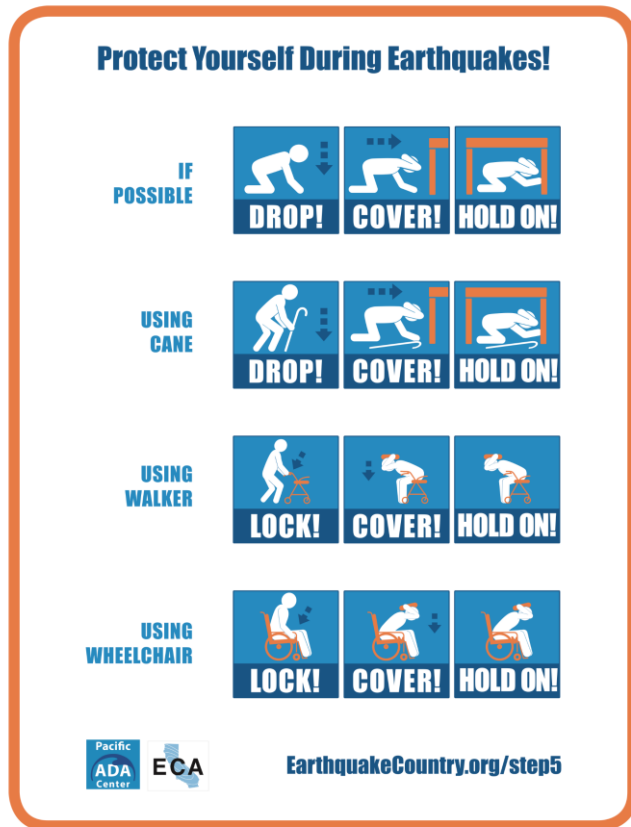




# Office of Emergency Management

## How to Prepare – 4 Steps

### Be Informed - Earthquakes



- Pre-quake actions:
  - Anchor Furniture.
  - Secure objects on walls and shelves.
  - Strap in Water heater and install flexible gas lines.
  - Know where shut-offs are, how to operate, and have needed tools.
- Protective Actions
  - Drop/Lock: Hands & Knees/Lock Wheels
  - Cover: Sturdy furniture, if possible, head if not.
  - Hold On: Stay under cover.
- ShakeAlert
  - Not prediction! Can give a few seconds warning.
  - MyShake app, Android OS, and WEA



# Office of Emergency Management

## How to Prepare – 4 Steps

- Involve your neighbors/co-workers/friends!



- Get trained!
  - Until Help Arrives, Listos, & CERT



- CPR/AED/First Aid & Stop the Bleed





# Office of Emergency Management

We are all in this together!

## Questions?



## Contact information

Phillip Stachelski  
Community Preparedness Coordinator  
Riverside Fire Department  
Office of Emergency Management  
(951) 320-8112

[pstachelski@riversideca.gov](mailto:pstachelski@riversideca.gov)  
[www.readyriverside.org](http://www.readyriverside.org)

Facebook: @CityofRiversideOEM  
Twitter/X: @RiversideOEM