

ANNUAL GAS TURBINE PACKAGE INSTRUMENT CALIBRATIONS AT RIVERSIDE ENERGY RESOURCE CENTER AND CLEARWATER POWER PLANT

Power Resources

Board of Public Utilities
September 22, 2025

RiversideCA.gov

1

BACKGROUND

Riverside Energy Resource Center (RERC)



- 198 MW
- Four GE LM6000 Gas Turbines
- Units 1 & 2 Commissioned in 2006
- Units 3 & 4 Commissioned in 2011



Clearwater Power Plant (Clearwater)



- 28 MW
- One GE LM2500 Gas Turbine
- Commissioned in 2005
- Combined Cycle – Both a gas and Steam Turbine

2

RiversideCA.gov

2

BACKGROUND - INSTRUMENTATION

1. Each gas turbine is housed in a fully integrated, self-contained package that is equipped with specialized instrumentation.
2. Sensors, transmitters, analyzers, and control devices:
 - a. Over 300 at RERC and over 50 at Clearwater.
 - b. Monitors and measures pressures, temperatures, and speeds of the various turbine subsystems.
 - c. Critical role in ensuring safe and reliable operation.
3. Instrumentation on each turbine package is calibrated annually:
 - a. Best industry practice.
 - b. Accuracy is vital for safe, reliable, and environmentally compliant operations.
 - c. Performed during scheduled two-week outages.



3

RiversideCA.gov

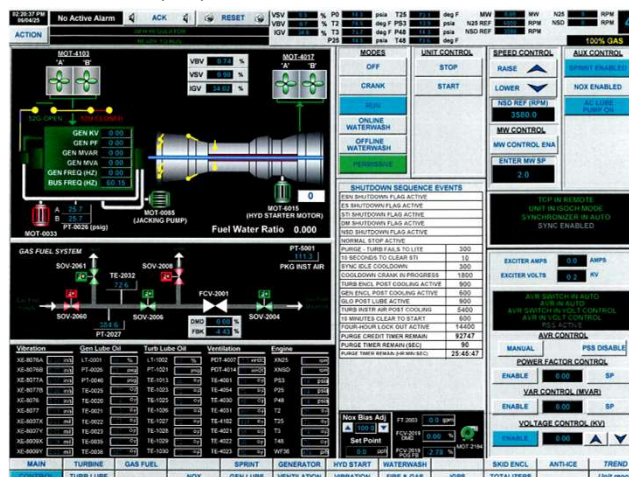
3

BACKGROUND - INSTRUMENTATION

Instruments on a Turbine Package at RERC



Real-Time Display of the Data from the Instrumentation



4



RiversideCA.gov

4

DISCUSSION – RFP 2469

1. Request for Proposal (RFP) No. 2469 posted April 24, 2025:

- a. Vendors notified - 106 external and 15 City of Riverside.
- b. 9 prospective bidders downloaded RFP.

2. On May 22, 2025, one proposal was received:

Vendor	Location	Amount	Rank
GE Vernova Operations, LLC.	Houston, TX	\$499,647.88 ⁽¹⁾	1

3. GE Vernova Operations, LLC. (GE Vernova):

- a. Original Equipment Manufacturer.
- b. Highly qualified technicians to perform this specialized work.
- c. Capable of meeting Riverside's outage schedules and repair times.
- d. 5-year Services Agreement ensures cost stability and operational efficiency.



(1) Amount includes maximum additional possible costs for instrument repairs or replacements.

5

RiversideCA.gov

5

DISCUSSION

1. Annual calibration of over 350 instruments – Significant potential for an instrument to fail calibration.

2. As-needed Repairs:

- a. Included in RFP – Hourly labor rates had to be specified for the 5-year term.
- b. Ability to promptly address any unanticipated maintenance items during the two-week outage that are vital to overall performance and reliability.
- c. Annual limit of \$50,000 - Not a guaranteed payment to vendor (used only if needed). Allocated below proportionally across facilities.
- d. Must have prior RPU approval before expensing any repairs.

Fiscal Year	RERC	Clearwater	Total
FY 25/26	\$76,260.00	\$20,762.32	\$97,022.32
FY 26/27	\$77,347.80	\$21,085.19	\$98,432.99
FY 27/28	\$78,468.24	\$21,417.74	\$99,885.98
FY 28/29	\$79,622.28	\$21,760.28	\$101,382.56
FY 29/30	\$80,810.95	\$22,113.08	\$102,924.03
5-Year Total:			\$499,647.88



6

RiversideCA.gov

6

RECOMMENDATIONS

That the Board of Public Utilities:

1. Approve the Services Agreement with GE Vernova Operations, LLC. of Houston, Texas to perform gas turbine package instrument calibrations at the Riverside Energy Resource Center and Clearwater Power Plant for a five-year term commencing on November 1, 2025, through December 31, 2030, in the amount of \$499,648; and
2. Authorize the City Manager, or his designee, to execute the Services Agreement with GE Vernova Operations, LLC., including making non-substantive changes.



7

RiversideCA.gov