



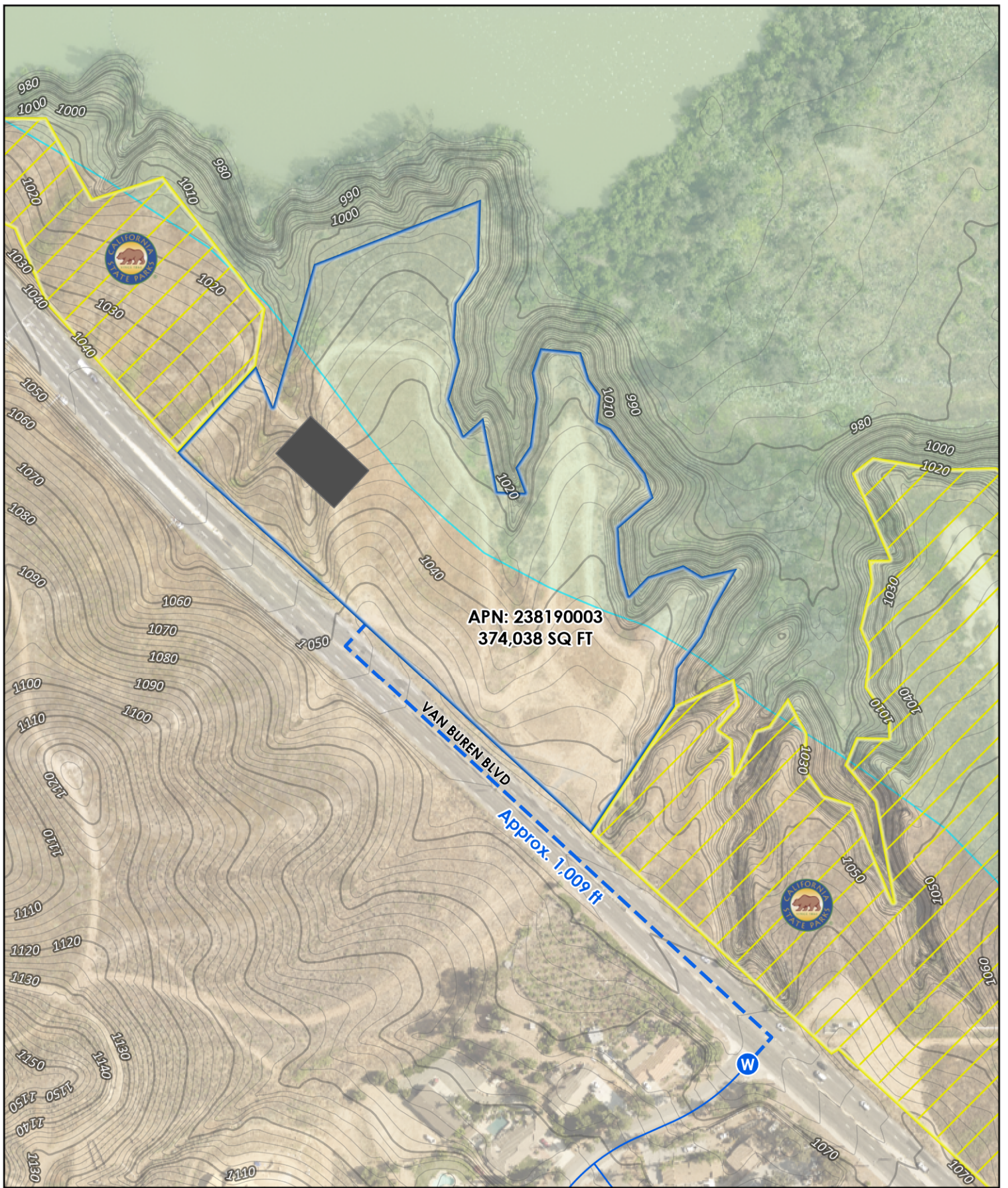
Dosan Center MOU Map Exhibit A

- | | | |
|-------------------------------|----------------------------------|-----------------------------------|
| Closest Utility Tie-In | Non-Existent Utility Line | Possible Building Location |
| Electric Φ1 | Electric | Citrus State Park |
| Electric Φ3 | Wastewater | City of Riverside |
| Wastewater | Water | FEMA Zone A |
| Water | 50' Contour | |

Disclaimer: The GIS data represented on this map provides a visual display of data for your convenience. Every reasonable effort has been made to assure the accuracy of the maps and associated data. The City of Riverside does not assume no liability for any decisions made or actions taken or not taken by the user of the applications in reliance upon any information or data furnished hereunder.

Last Updated: 3/3/2023

1 inch = 1,200 feet



APN: 238190003
374,038 SQ FT

VAN BUREN BLVD
Approx. 1,009 ft



Dosan Center MOU Map Exhibit B - Water

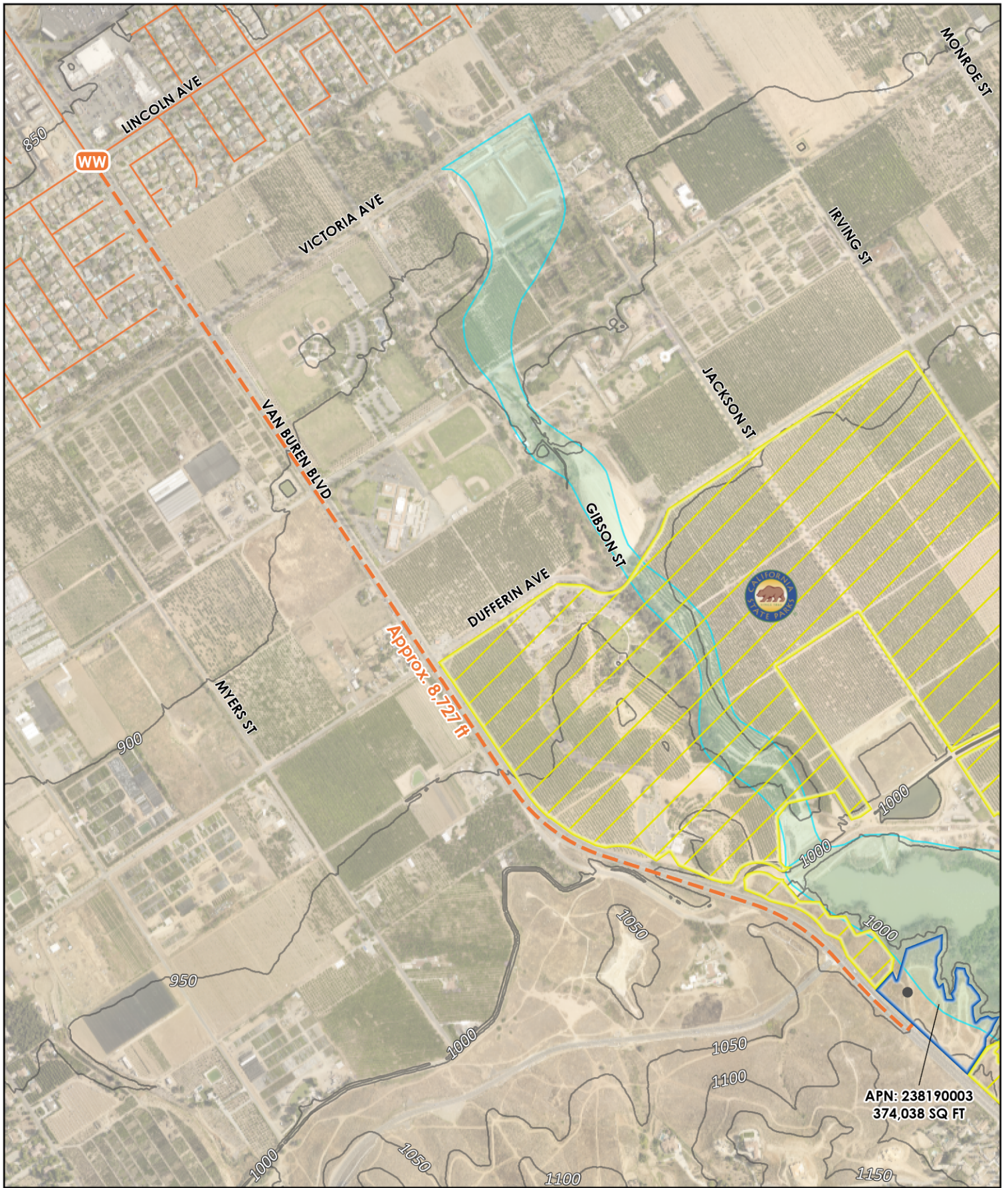
- Closest Utility Tie-In**
- Water
- Non-Existent Utility Line**
- Water (~ 1,009 ft)
- Existing Utility Line**
- Water Main
- Contour**
- 10' Contour
- 2' Contour
- Possible Building Location**
- (approx. 10,000 sq ft)
- Citrus State Park
- City of Riverside
- FEMA Zone A

Disclaimer: The GIS data represented on this map provides a visual display of data for your convenience. Every reasonable effort has been made to assure the accuracy of the maps and associated data. The City of Riverside shall assume no liability for any decisions made or actions taken or not taken by the user of the applications in reliance upon any information or data furnished hereunder.

Last Updated: 3/3/2023

1 inch = 200 feet

0 100 200 Feet



APN: 238190003
374,038 SQ FT



Dosan Center MOU Map Exhibit C - Wastewater

Closest Utility Tie-In

- Wastewater
- Non-Existent Utility Line (Wastewater ~ 8,727 ft)
- Existing Utility Line
- Wastewater Main

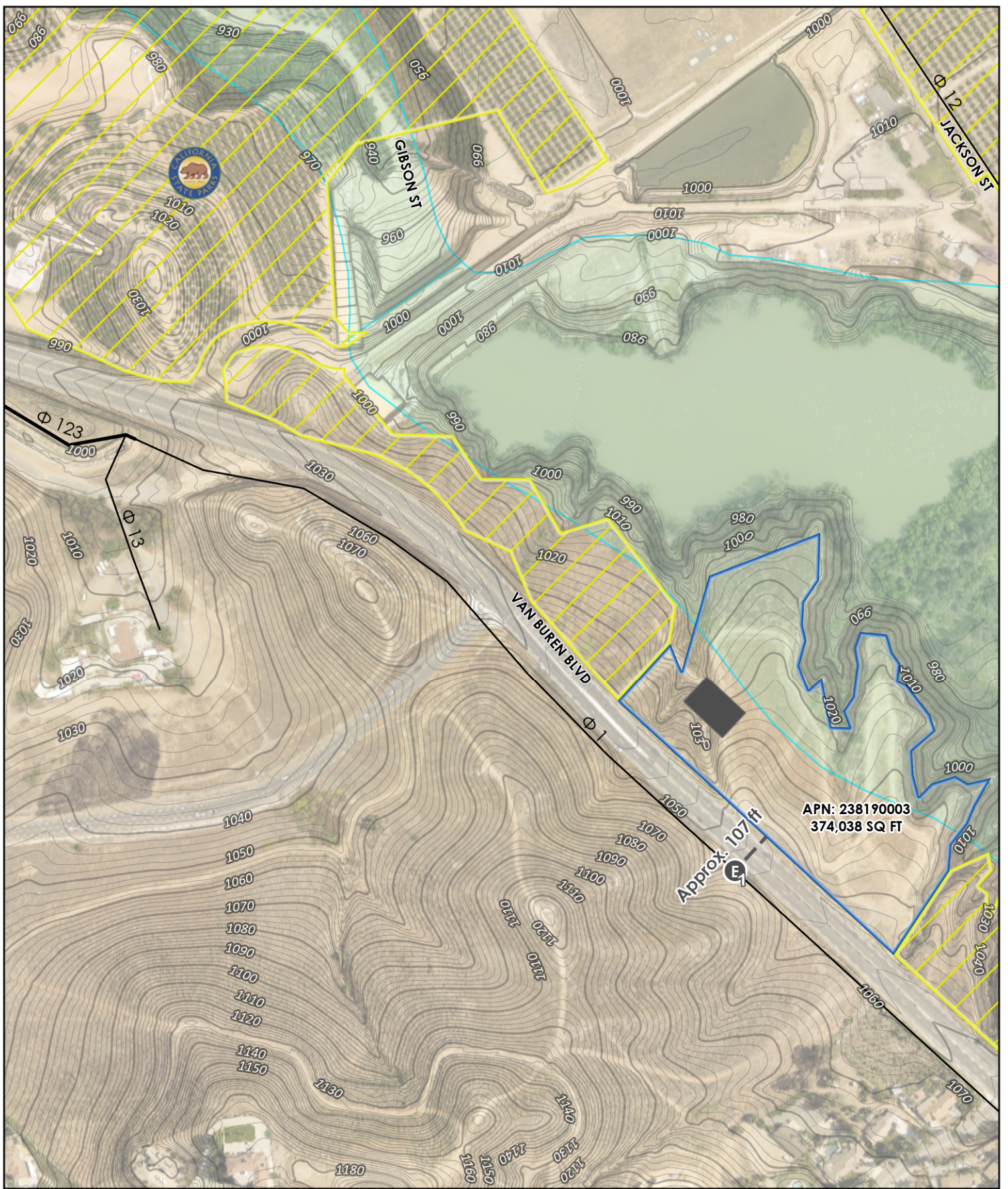
Contour

- 50 ft Contour
- Possible Building Location
- Citrus State Park
- City of Riverside
- FEMA Zone A



Disclaimer: The GIS data represented on this map provides a visual display of data for your convenience. Every reasonable effort has been made to assure the accuracy of the maps and associated data. The City of Riverside shall assume no liability for any decisions made or actions taken or not taken by the user of the applications in reliance upon any information or data furnished hereunder.

1 inch = 900 feet
Last Updated: 3/3/2023
 0 300 600 900 Feet



APN: 238190003
374,038 SQ FT

Approx. 107 ft
E₁



Dosan Center MOU Map

Exhibit D:1 - Electric Single Phase

- Closest Utility Tie-In**
- Electric Φ1
- Non-Existent Utility Line**
- Electric (Single-Phase ~ 107 ft)
- Existing Utility Line**
- Single Phase Overhead
 - 3-Phase Overhead
 - 10' Contour
 - 2' Contour

- Possible Building Location**
- (approx. 10,000 sq ft)
 - Citrus State Park
 - City of Riverside
 - FEMA Zone A

Disclaimer: The GIS data represented on this map provides a visual display of data for your convenience. Every reasonable effort has been made to assure the accuracy of the maps and associated data. The City of Riverside shall assume no liability for any decisions made or actions taken or not taken by the user of the applications in reliance upon any information or data furnished hereunder.

Last Updated: 3/3/2023

1 inch = 300 feet



Dosan Center MOU Map

Exhibit D:2 - Electric Three Phase

- Closest Utility Tie-In**
- Electric Ø3
- Non-Existent Utility Line**
- Electric (Three Phase ~ 2,795 ft)

- Existing Utility Line**
- Single Phase Overhead
 - 3-Phase Overhead
 - 10' Contour
 - 2' Contour

- Possible Building Location**
- (approx. 10,000 sq ft)
 - Citrus State Park
 - City of Riverside
 - FEMA Zone A

Disclaimer: The GIS data represented on this map provides a visual display of data for your convenience. Every reasonable effort has been made to assure the accuracy of the maps and associated data. The City of Riverside shall assume no liability for any decisions made or actions taken or not taken by the user of the applications in reliance upon any information or data furnished hereunder.

Last Updated: 3/3/2023

1 inch = 300 feet

0 100 200 300 Feet