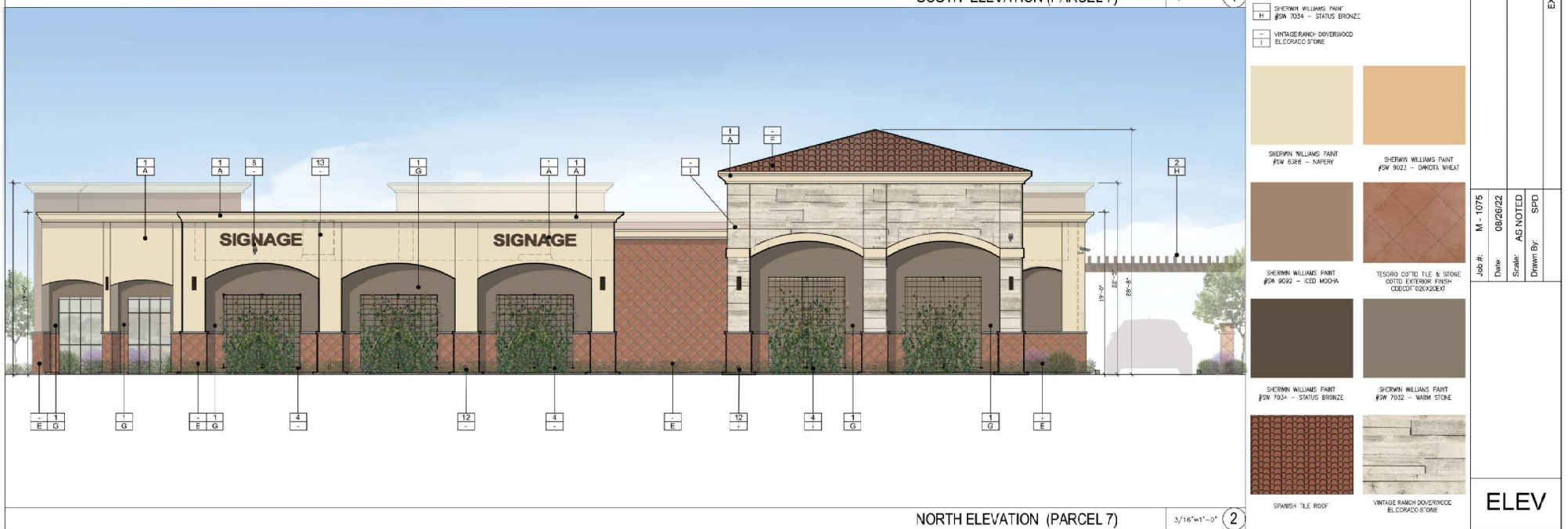




SOUTH ELEVATION (PARCEL 7)

3/16"=1'-0" (1)



NORTH ELEVATION (PARCEL 7)

3/16"=1'-0" (2)

KEYED NOTES

- 1 - EXTERIOR STUCCO TO BE PAINTED
- 2 - TRELLIS
- 3 - PREFINISHED METAL CANOPY
- 4 - CITY SCAPES INLINE WALL MOUNTED TRELLIS - CITY BROWN
- 5 - DRIVE THRU PICK UP WINDOW
- 6 - EXTERIOR WALL CYLINDER - NICKER - 92X46A - BRONZE
- 7 - SERVICE & SECONDARY EGRESS DOOR
- 8 - SURVEILLANCE CAMERA
- 9 - EMERGENCY EGRESS LIGHT
- 10 - EGRESS DOOR
- 11 - SPANREL STICHERFRONT (RAJX WINDOWS)
- 12 - INTERNAL DOWNSPOUT FOR PRIMARY DRAIN
- 13 - HVAC EQUIPMENT

EXTERIOR COLORS & FINISHES

- SHERWIN WILLIAMS PAINT #SW 6385 - NAPERY
- SHERWIN WILLIAMS PAINT #SW 5223 - DAKOTA WHEAT
- SHERWIN WILLIAMS PAINT #SW 5032 - CED MOCHA
- ANODIZED ALUMINUM STOREFRONT SYSTEM #40 DARK BRONZE AA-M10C2144
- TESORO COTTO TILE & STONE COTTO EXTERIOR FINISH SPACE C00C07C20020C2
- SPANISH TILE ROOF
- SHERWIN WILLIAMS PAINT #SW 7032 - WARM STONE
- SHERWIN WILLIAMS PAINT #SW 7034 - STATUS BRONZE
- VINTAGE RANCH DOVERWOOD EL CORAZO STONE

SHERWIN WILLIAMS PAINT #SW 6385 - NAPERY	SHERWIN WILLIAMS PAINT #SW 7032 - WARM STONE
SHERWIN WILLIAMS PAINT #SW 5223 - DAKOTA WHEAT	SHERWIN WILLIAMS PAINT #SW 7034 - STATUS BRONZE
SHERWIN WILLIAMS PAINT #SW 9032 - CED MOCHA	TESORO COTTO TILE & STONE COTTO EXTERIOR FINISH SPACE C00C07C20020C2
SHERWIN WILLIAMS PAINT #SW 7034 - STATUS BRONZE	SHERWIN WILLIAMS PAINT #SW 7032 - WARM STONE
SPANISH TILE ROOF	VINTAGE RANCH DOVERWOOD EL CORAZO STONE

Rev. #	Date	Description

Job #:	M - 1075
Date:	08/26/22
Scale:	AS NOTED
Drawn By:	SPD

8006-6300 VAN DUREN BLVD. RIVERSIDE, CA 92503	EXTERIOR ELEVATION (PARCEL 7)
--	-------------------------------



WEST ELEVATION (PARCEL 7)

1/4"=1'-0" 1



EAST ELEVATION (PARCEL 7)

1/4"=1'-0" 2

KEYED NOTES

- 1 - EXTERIOR STUCCO TO BE PAINTED
- 2 - TRELLIS
- 3 - PREFINISHED METAL CANOPY
- 4 - CITY SCAPES INLINE WALL MOUNTED TRELLIS - CITY BROWN
- 5 - DRIVE THRU PICK UP WINDOW
- 6 - EXTERIOR WALL CYLINDER - KICKER - 92X48A - BRONZE
- 7 - SERVICE & SECONDARY EGRESS DOOR
- 8 - SURVEILLANCE CAMERA
- 9 - EMERGENCY EGRESS LIGHT
- 10 - EGRESS DOOR
- 11 - SPANGREL SICHFRONT (RAJUK WINDOWS)
- 12 - INTERNAL DOWNPOUT FOR PRIMARY DRAIN
- 13 - HVAC EQUIPMENT

EXTERIOR COLORS & FINISHES

- SHERWIN WILLIAMS PAINT
- A - #SW 6385 - NAFERY
- SHERWIN WILLIAMS PAINT
- B - #SW 5223 - DAKOTA WHEAT
- SHERWIN WILLIAMS PAINT
- C - #SW 9032 - CED MOCHA
- ANODIZED ALUMINUM STOREFRONT SYSTEM
- D - #40 DARK BRONZE AA-M1CE2144
- TESORO COTTO TILE & STONE
- E - COTTO EXTERIOR FINISH SPACE C0000T2C0000021
- SPANISH TILE ROOF
- F -
- SHERWIN WILLIAMS PAINT
- G - #SW 7032 - WARM STONE
- SHERWIN WILLIAMS PAINT
- H - #SW 7034 - STATUS BRONZE
- VINTAGE RANCH DOVERWOOD
- I - EL CORAZO STONE



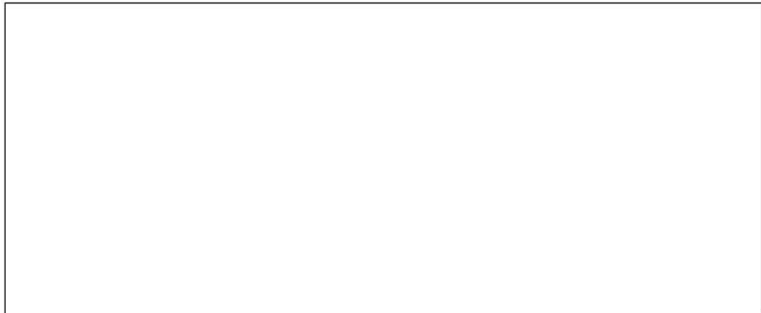
Rev. #	Description	Date

Job #:	M - 1075
Date:	08/26/22
Scale:	AS NOTED
Drawn By:	SPD

8006-0300 VAN DUREN BLVD.
RIVERSIDE, CA 92503

EXTERIOR ELEVATION (PARCEL 7)

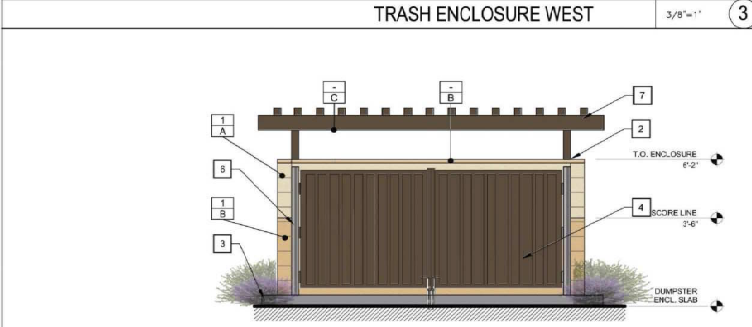
ELEV



TRASH ENCLOSURE WEST

3/8"=1'

3



TRASH ENCLOSURE NORTH

3/8"=1'

2



TRASH ENCLOSURE EAST

3/8"=1'

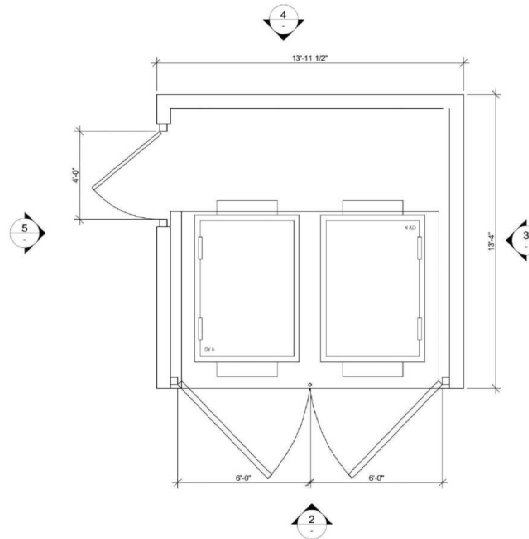
5



TRASH ENCLOSURE SOUTH

3/8"=1'

4



TRASH ENCLOSURE PLAN VIEW

3/8"=1'

1

KEYED NOTES

- 1 8"X8"X16 - MASONRY WALL
- 2 2" CONCRETE CAP
- 3 6" FPD FOUNDATION, EXTENDING 6" BEYOND ENCLOSURE WALLS, OVER SOIL COMPACTED BASE, WITH A MIN. SLOPE OF 2" TO DRAIN ENCLOSURE.
- 4 18 GA. METAL GATES AND STEEL MINI V-BEAM PANEL, HUNG ON 3" STEEL PIPES.
- 5 4' ACCESS OPENING
- 6 4"X4" STEEL PIPE
- 7 4"X4" STEEL TRELLIS

EXTERIOR COLORS & FINISHES

- SHERWIN WILLIAMS PAINT
- A #SW 6385 - IMPERY
- B SHERWIN WILLIAMS PAINT
- #SW 9023 - DAKOTA WHEAT
- SHERWIN WILLIAMS PAINT
- #SW 7034 - STATUS BRONZE



SHERWIN WILLIAMS PAINT
#SW 6386 - IMPERY



SHERWIN WILLIAMS PAINT
#SW 9023 - DAKOTA WHEAT



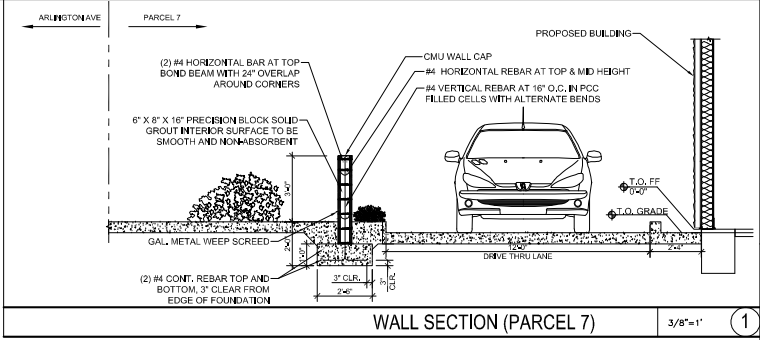
SHERWIN WILLIAMS PAINT
#SW 7034 - STATUS BRONZE

Rev. #	Date	Description

Job #: M - 1075	Date: AS NOTED
Scale: 08/16/22	Drawn By: SPD

6006-690 VAN BUREN BLVD. RIVERSIDE, CA 92503	TRASH ENCLOSURE (PARCEL 7)
---	----------------------------

TE

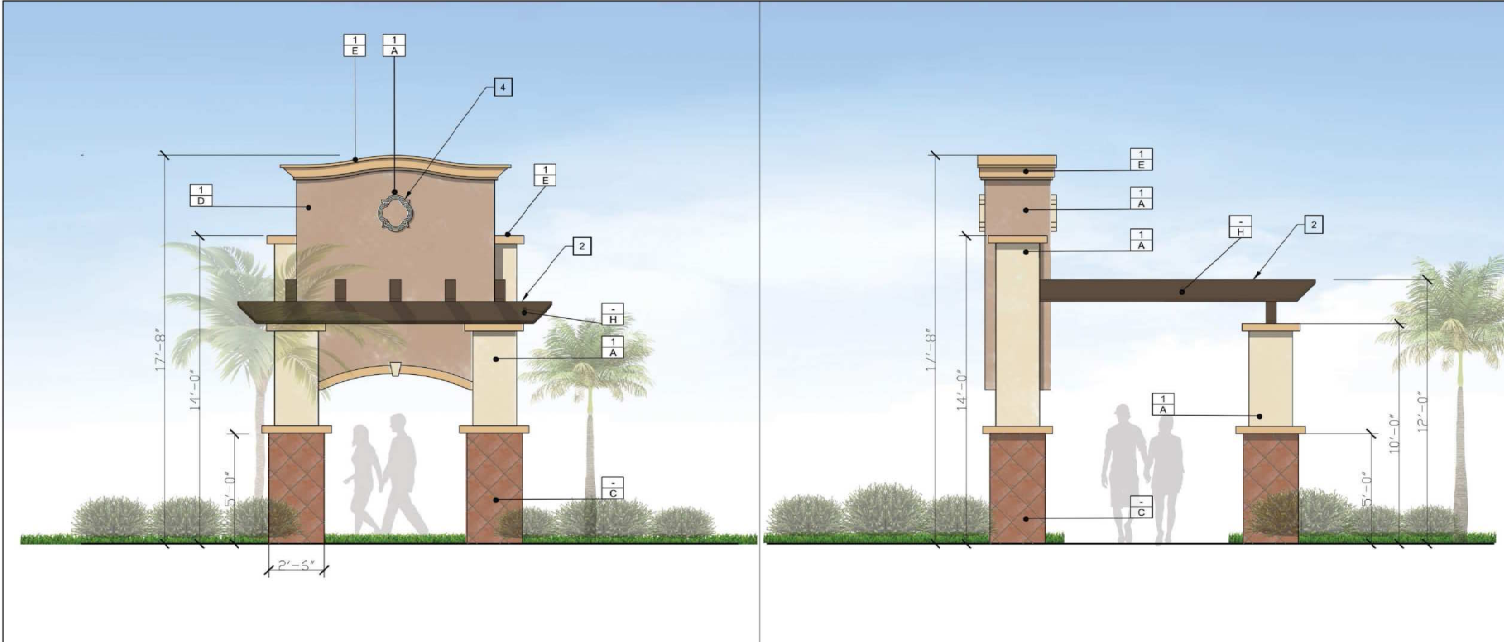


Rev. #	Date	Description

Job #:	M - 1075
Date:	05/10/22
Scale:	AS NOTED
Drawn By:	SPD

6008-4300 VAN BUREN BLVD. REVERSIDE, CA 92503	
WALL SECTION (PARCEL 7)	

WS7



WEST ELEVATION

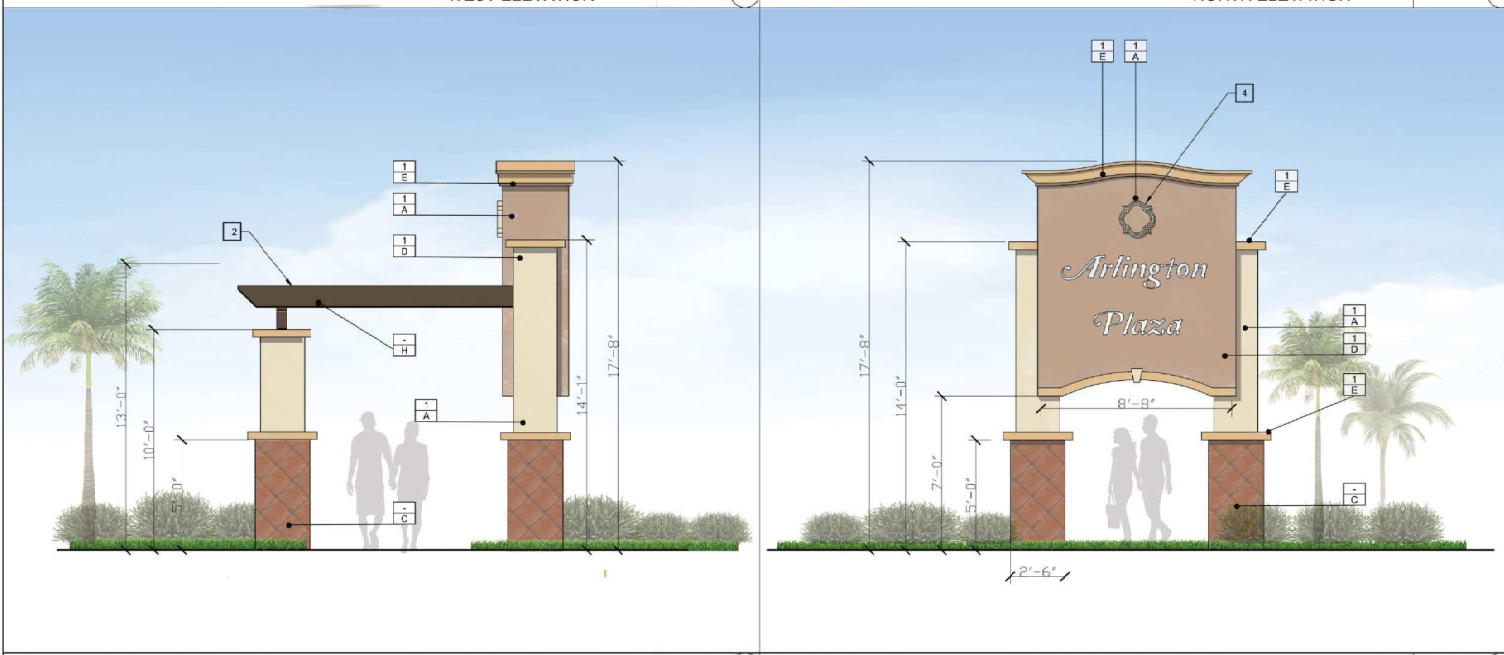
3/8"=1"

3

NORTH ELEVATION

3/8"=1"

2



SOUTH ELEVATION

3/8"=1"

3

EAST ELEVATION

3/8"=1"

1

KEYED NOTES

- 1 EXTERIOR STUCCO TO BE PAINTED
- 2 TRELLIS
- 3 PLAZA LOGO (REPLICATE THE SAME FONT AS THE EXISTING MONUMENT SIGN)
- 4 MEDALLION

EXTERIOR COLORS & FINISHES

- 1 A SHERWIN WILLIAMS PAINT #SW 4369 - WARELY
- 1 B SHERWIN WILLIAMS PAINT #SW 7332 - IRM STONE
- 1 C TESCORO COTTO TILE & STONE COTTO EXTERIOR FINISH SPACE CCCCCT02WQ29K1
- 1 D SHERWIN WILLIAMS PAINT #SW 9092 - ICED MOCHA
- 1 E SHERWIN WILLIAMS PAINT #SW 9023 - DAKOTA WHEAT
- 1 H SHERWIN WILLIAMS PAINT #SW 7334 - STATUS BRONZE



Rev. #	Date	Description

Job #: M - 1075	Date: 08/24/22	Scale: AS NOTED
Drawn By: SPD		

6006-6360 VAN BUREN BLVD
RIVERSIDE, CA 92503
MONUMENT SIGN (PARCEL 7)

MS1



Rev. #	Date	Description

Job #: M - 1075	Scale: 08/29/22	Date: AS NOTED	Drawn By: SPD
6905-6910 VAN BUREN BLVD. RYERSIDE, CA 92503 MONUMENT RENDERING (PARCEL 7)			