

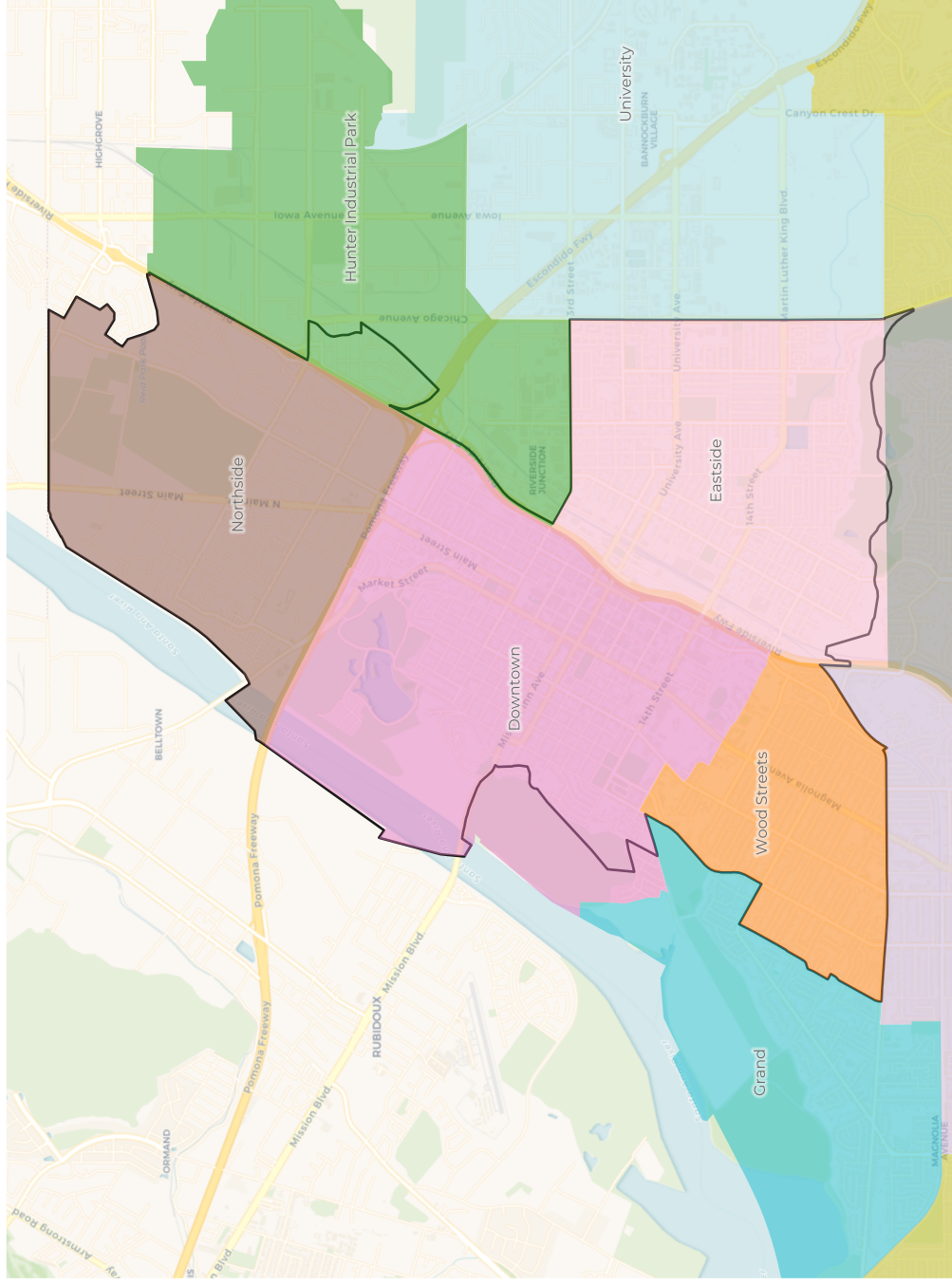
2020 Census

	1	2	3	4	5	6	7
Population	46,532	44,392	45,251	43,943	46,168	44,846	45,313
Deviation	1,326	-814	45	-1,263	962	-360	107
Deviation %	2.9%	-1.8%	0.1%	-2.8%	2.1%	-0.8%	0.2%
Other	12,229	18,719	17,597	21,512	12,579	8,706	10,347
Other %	26.3%	42.2%	38.9%	49.0%	27.2%	19.4%	22.8%
Latino	29,276	15,458	23,895	13,954	28,963	31,999	29,612
Latino %	62.9%	34.8%	52.8%	31.8%	62.7%	71.4%	65.3%
Asian	1,718	6,217	1,432	5,333	2,345	2,188	3,224
Asian %	3.7%	14.0%	3.2%	12.1%	5.1%	4.9%	7.1%
Black	3,309	3,998	2,327	3,144	2,281	1,953	2,130
Black %	7.1%	9.0%	5.1%	7.2%	4.9%	4.4%	4.7%

Citizen Voting Age Population (CVAP)

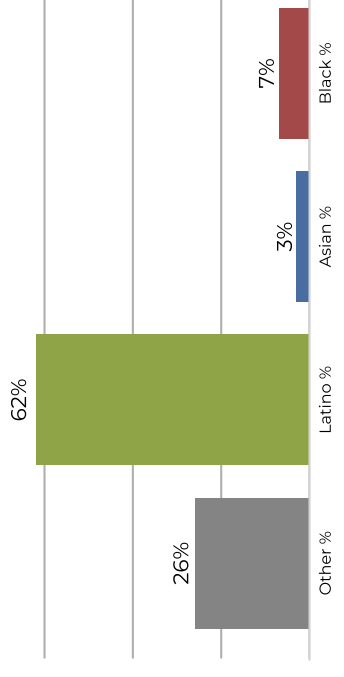
	1	2	3	4	5	6	7
Total CVAP	28,745	33,120	31,668	33,227	32,626	26,521	30,817
Other CVAP	9,389	14,687	15,236	17,457	12,400	7,202	9,590
Other CVAP %	32.7%	44.3%	48.1%	52.5%	38.0%	27.2%	31.1%
Latino CVAP	15,755	11,678	13,749	8,669	16,408	16,102	16,804
Latino CVAP %	54.8%	35.3%	43.4%	26.1%	50.3%	60.7%	54.5%
Asian CVAP	1,267	4,385	928	4,370	1,529	1,569	2,822
Asian CVAP %	4.4%	13.2%	2.9%	13.2%	4.7%	5.9%	9.2%
Black CVAP	2,334	2,370	1,755	2,731	2,289	1,648	1,601
Black CVAP %	8.1%	7.2%	5.5%	8.2%	7.0%	6.2%	5.2%

District 1

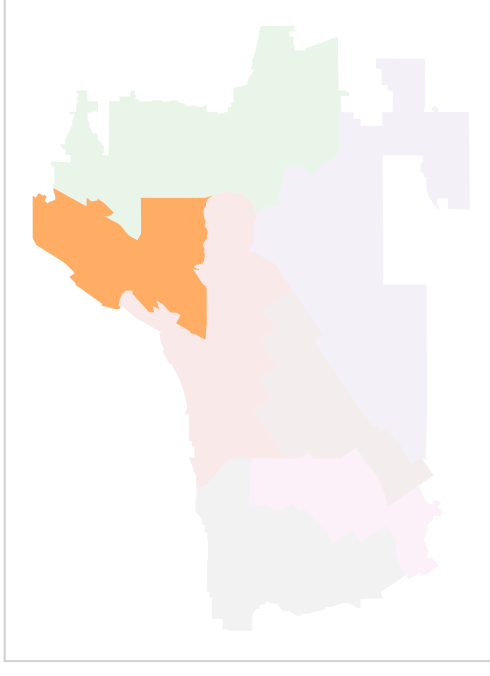
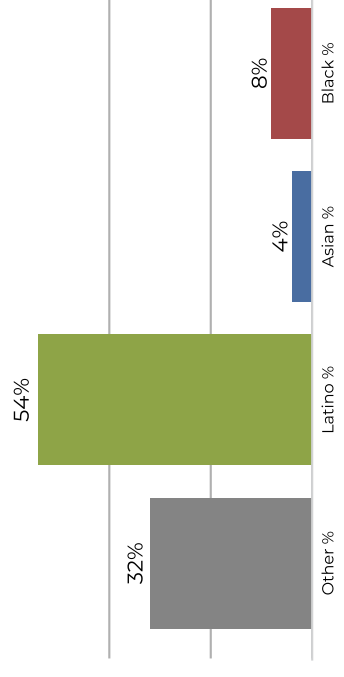


Population	Deviation	Deviation %	Other	Other %	Latino	Latino %	Asian	Asian %	Black	Black %
46,532	1,326	2.9%	12,229	26.3%	29,276	62.9%	1,718	3.7%	3,309	7.1%
Total CVAP	Other CVAP	Other CVAP %	Latino CVAP	Latino CVAP %	Asian CVAP	Asian CVAP %	Black CVAP	Black CVAP %	Black CVAP	Black CVAP %
28,745	9,389	32.7%	15,755	54.8%	1,267	4.4%	2,334	8.1%		

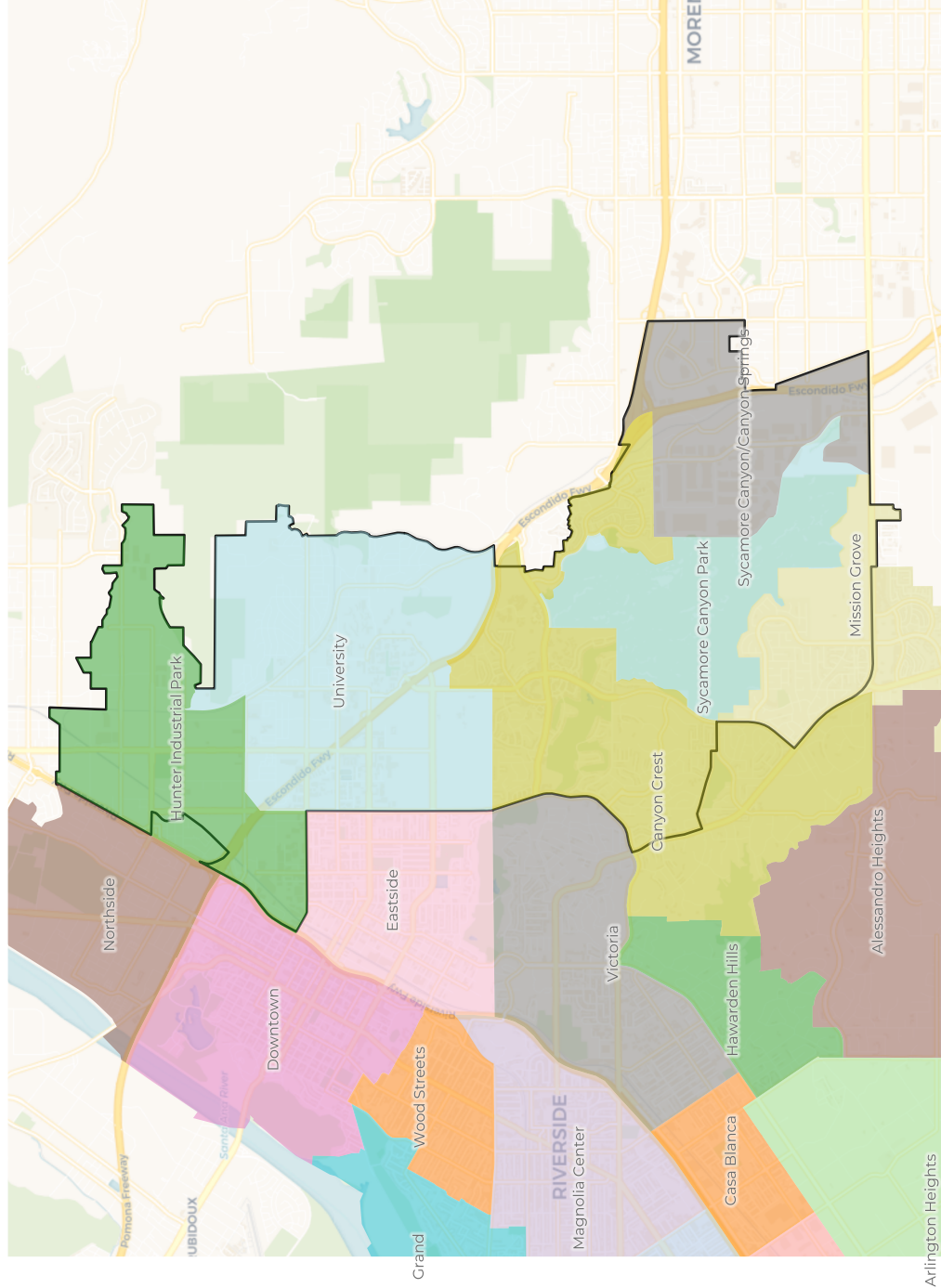
2020 Census



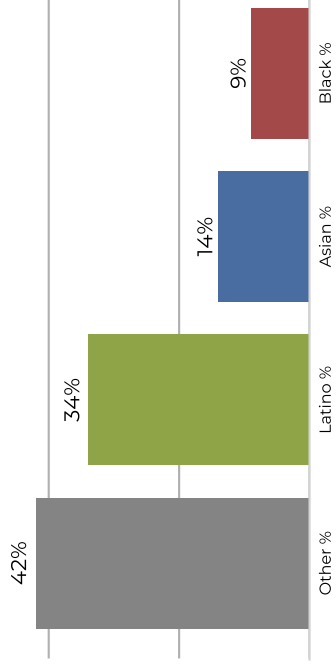
Citizen Voting Age Population



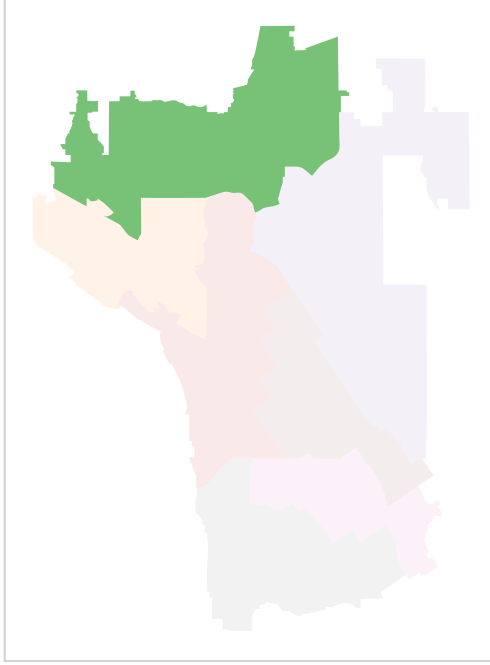
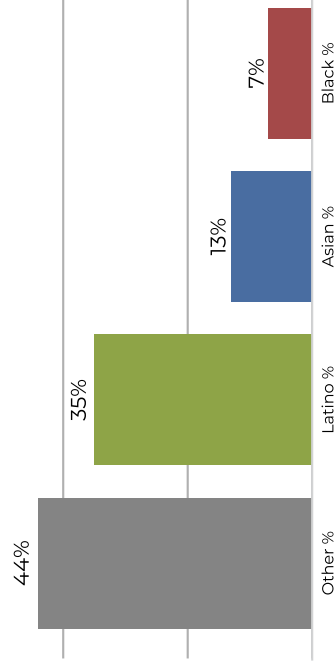
District 2



2020 Census

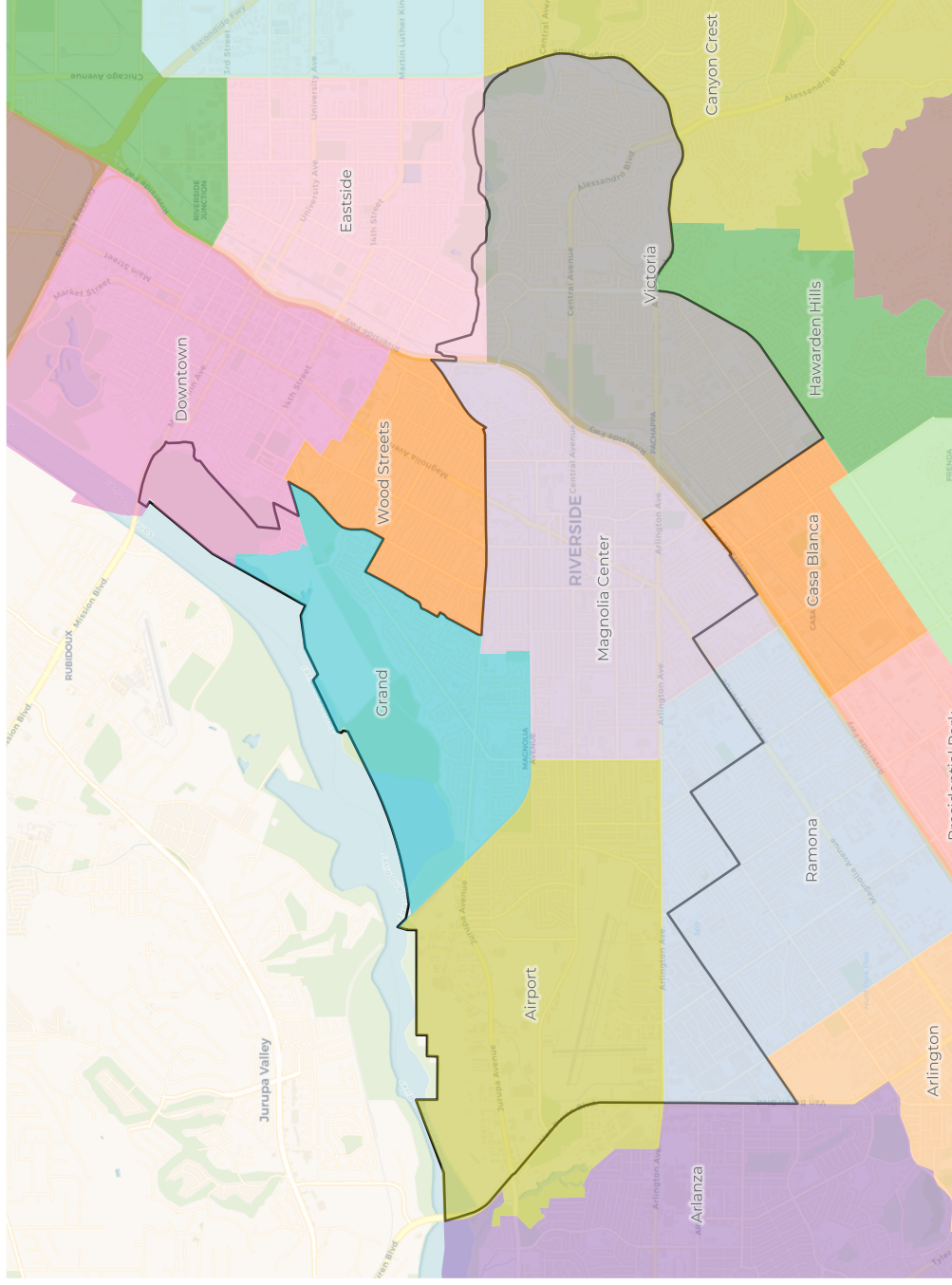


Citizen Voting Age Population

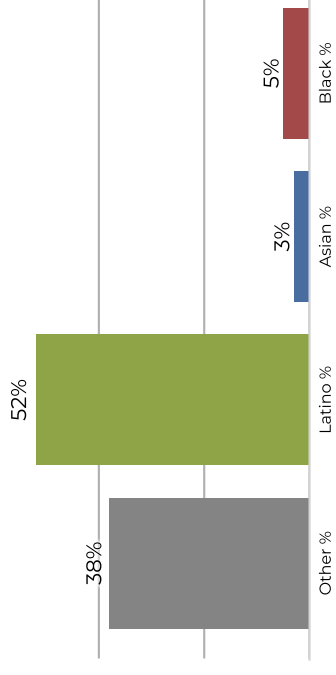


Population	Deviation	Deviation %	Other	Other %	Latino	Latino %	Asian	Asian %	Black	Black %
44,392	-814	-1.8%	18,719	42.2%	15,458	34.8%	6,217	14.0%	3,998	9.0%
Total CVAP	Other CVAP	Other CVAP %	Latino CVAP	Latino CVAP %	Asian CVAP	Asian CVAP %	Black CVAP	Black CVAP %		
33,120	14,687	44.3%	11,678	35.3%	4,365	13.2%	2,370	7.2%		

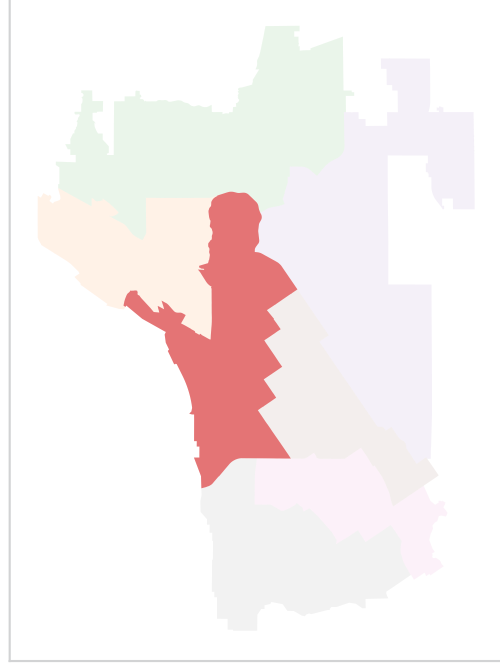
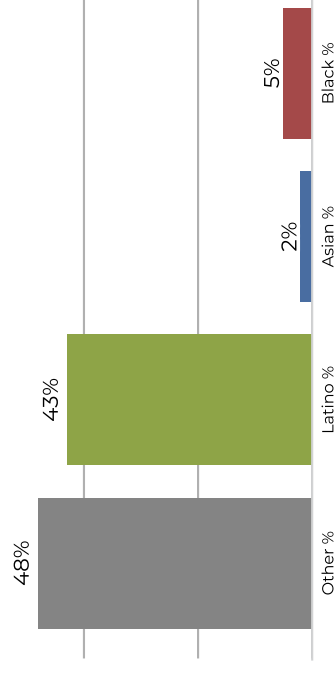
District 3



2020 Census

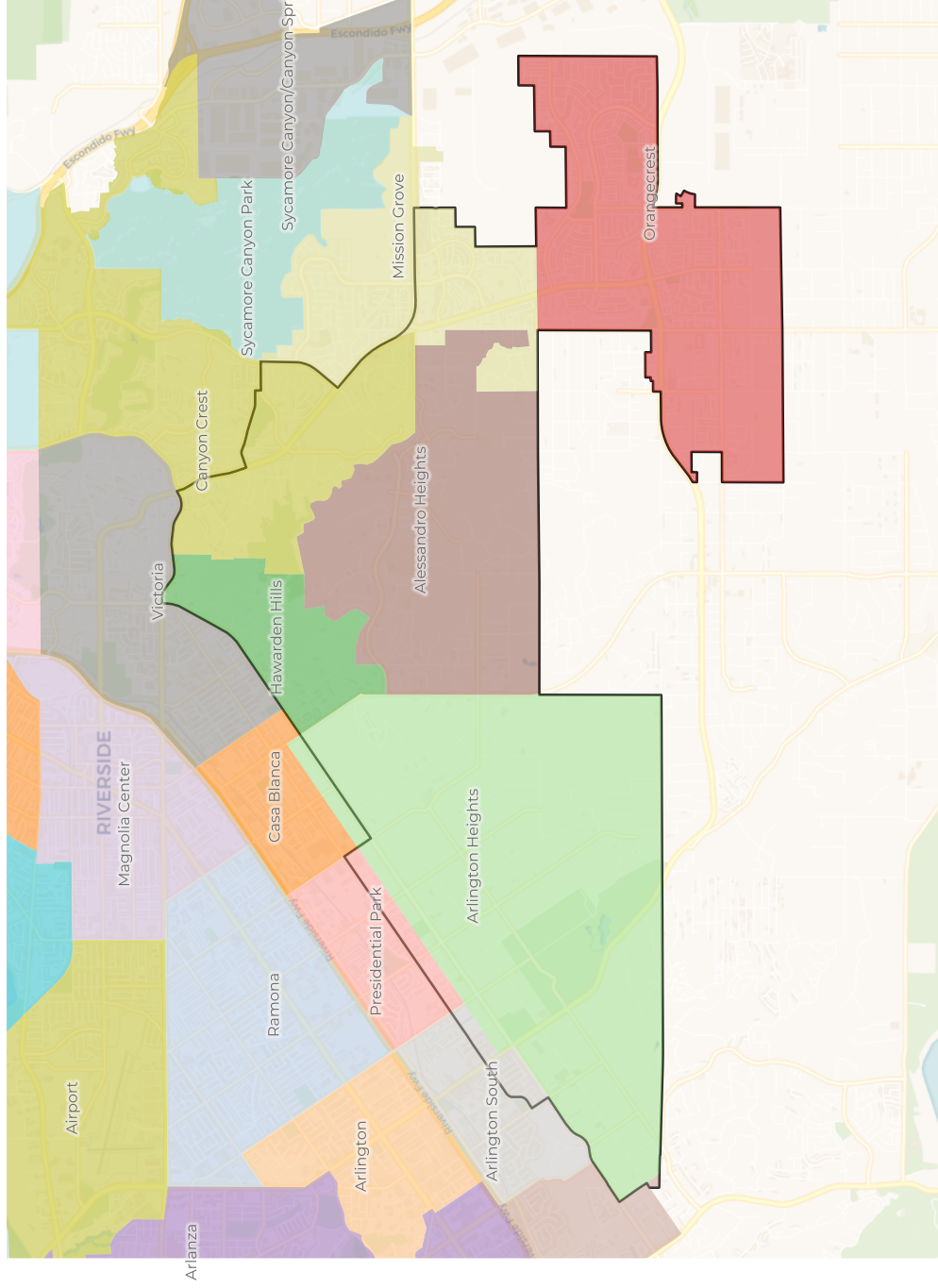


Citizen Voting Age Population

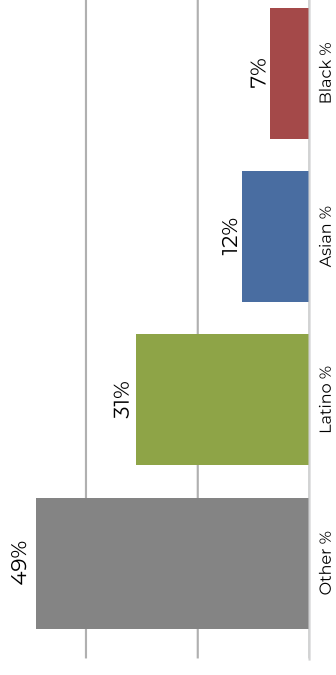


Population	Deviation	Deviation %	Other	Latino	Latino %	Asian	Asian %	Black	Black %
45,251	45	0.1%	17,597	23,895	52.8%	1,432	3.2%	2,327	5.1%
Total CVAP	Other CVAP	Other CVAP %	Latino CVAP	Latino CVAP %	Asian CVAP	Asian CVAP %	Black CVAP	Black CVAP	Black CVAP %
31,668	15,236	48.1%	13,749	43.4%	928	2.9%	1,755	5.5%	

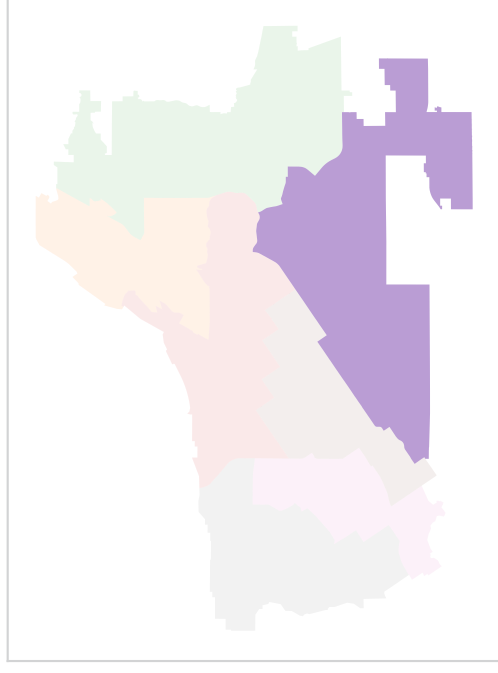
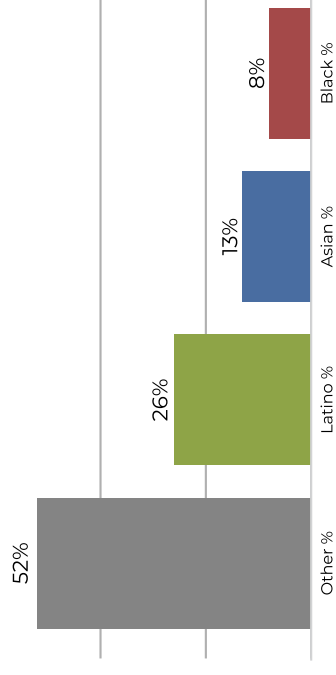
District 4



2020 Census

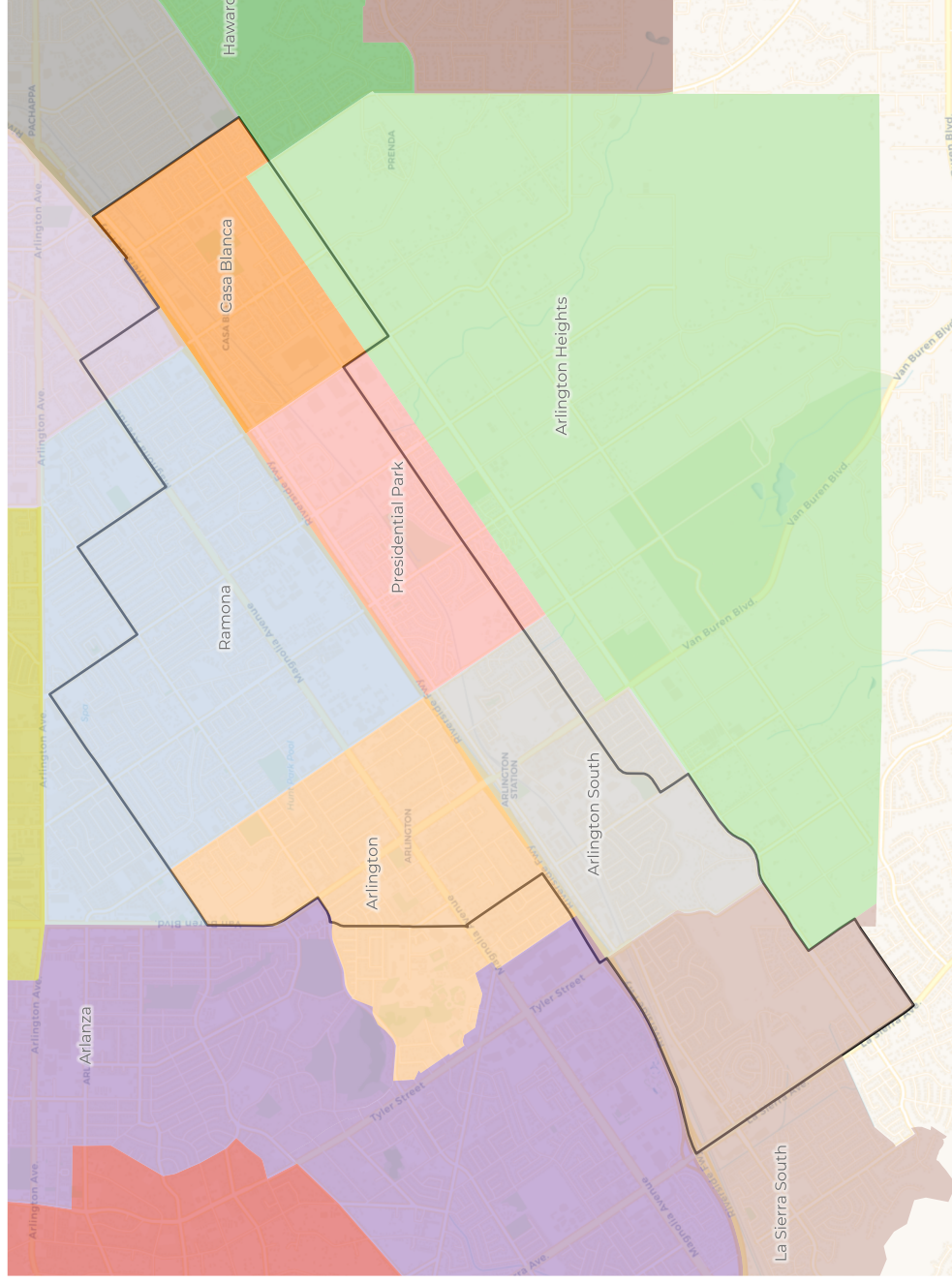


Citizen Voting Age Population

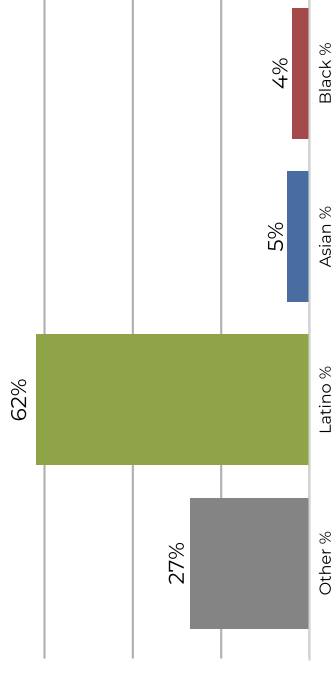


Population	Deviation	Deviation %	Other	Other %	Latino	Latino %	Asian	Asian %	Black	Black %
43,943	-1,263	-2.8%	21,512	49.0%	13,954	31.8%	5,333	12.1%	3,144	7.2%
Total CVAP	Other CVAP	Other CVAP %	Latino CVAP	Latino CVAP %	Asian CVAP	Asian CVAP %	Black CVAP	Black CVAP %		
33,227	17,457	52.5%	8,669	26.1%	4,370	13.2%	2,731	8.2%		

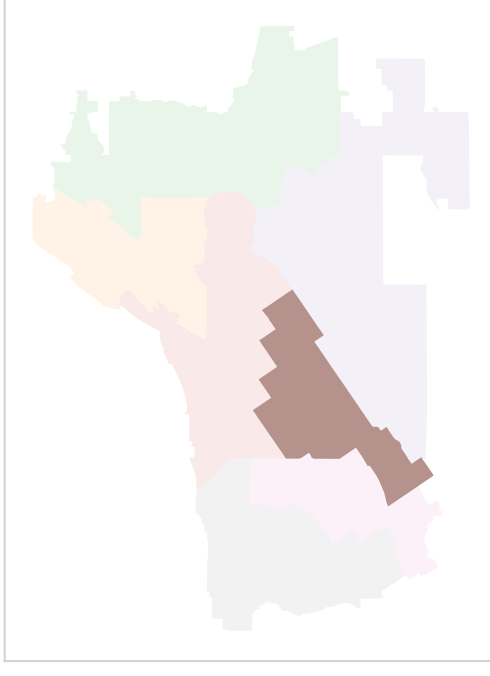
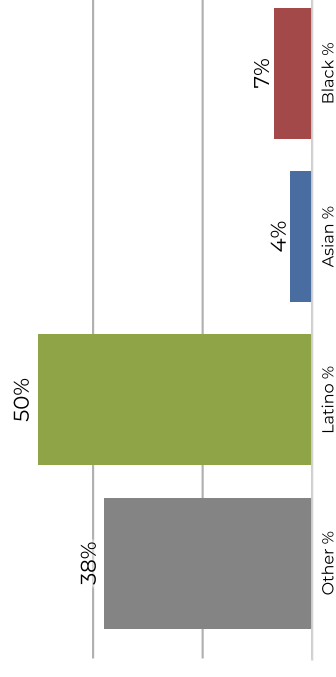
District 5



2020 Census

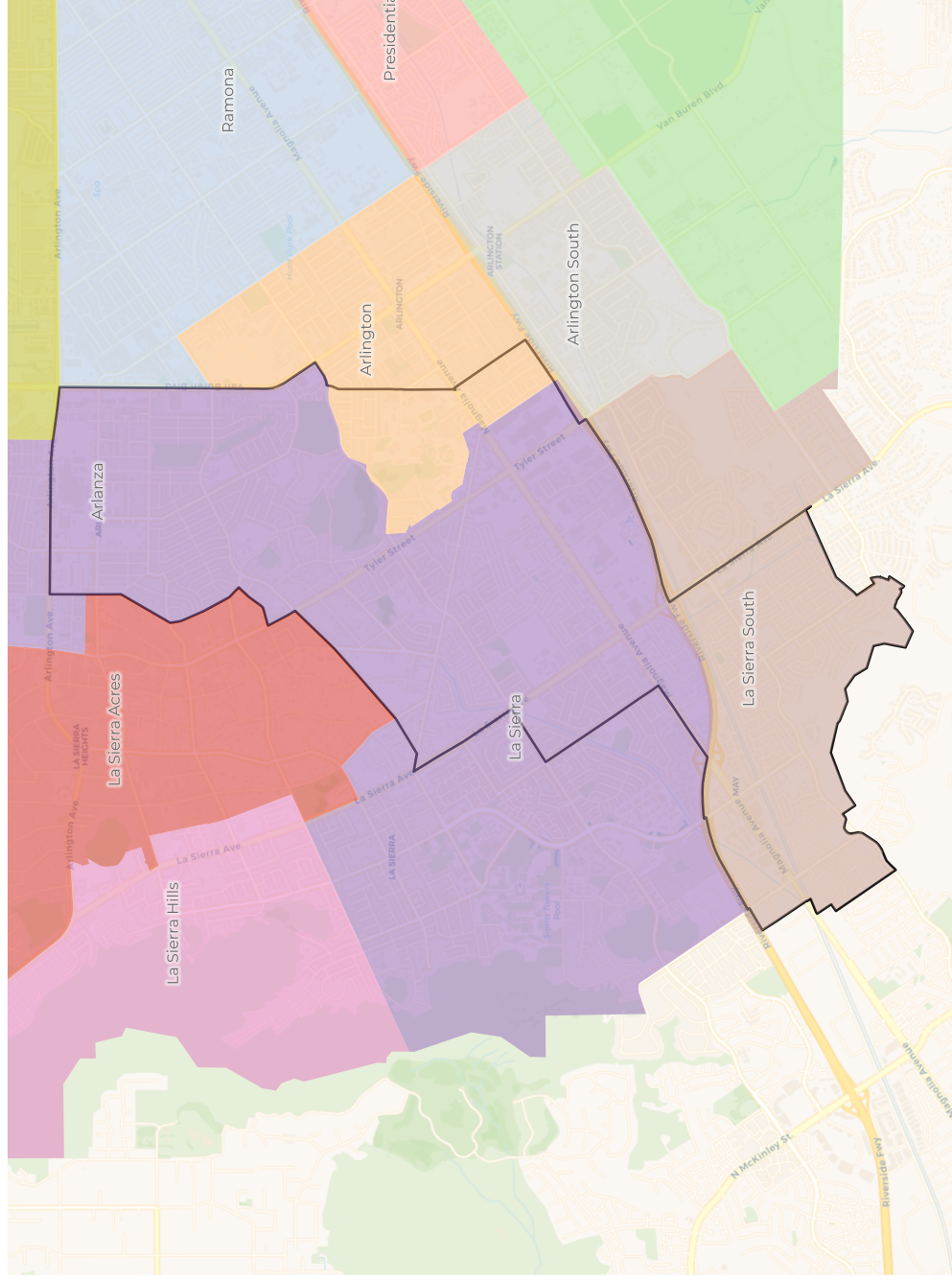


Citizen Voting Age Population

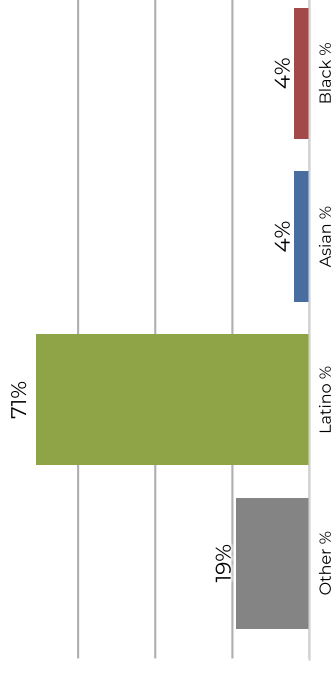


Population	Deviation	Deviation %	Other	Other %	Latino	Latino %	Asian	Asian %	Black	Black %
46,168	962	2.1%	12,579	27.2%	28,963	62.7%	2,345	5.1%	2,281	4.9%
Total CVAP	12,400	38.0%	16,408	27.2%	50,333	62.7%	2,345	4.7%	2,289	7.0%

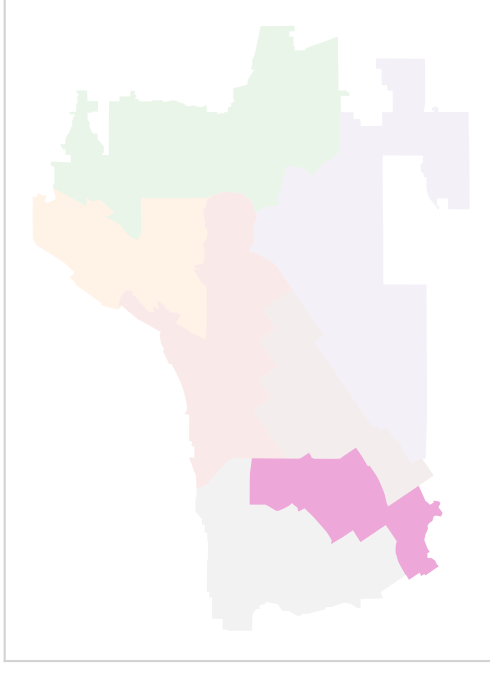
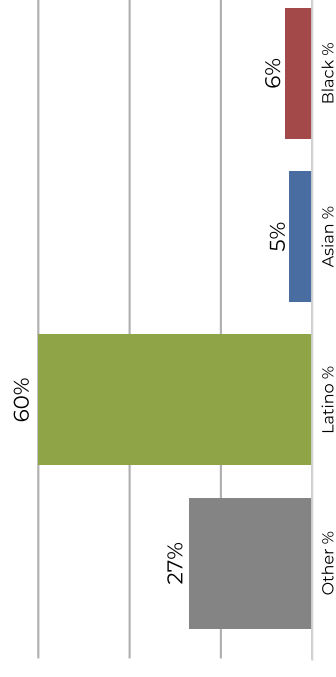
District 6



2020 Census

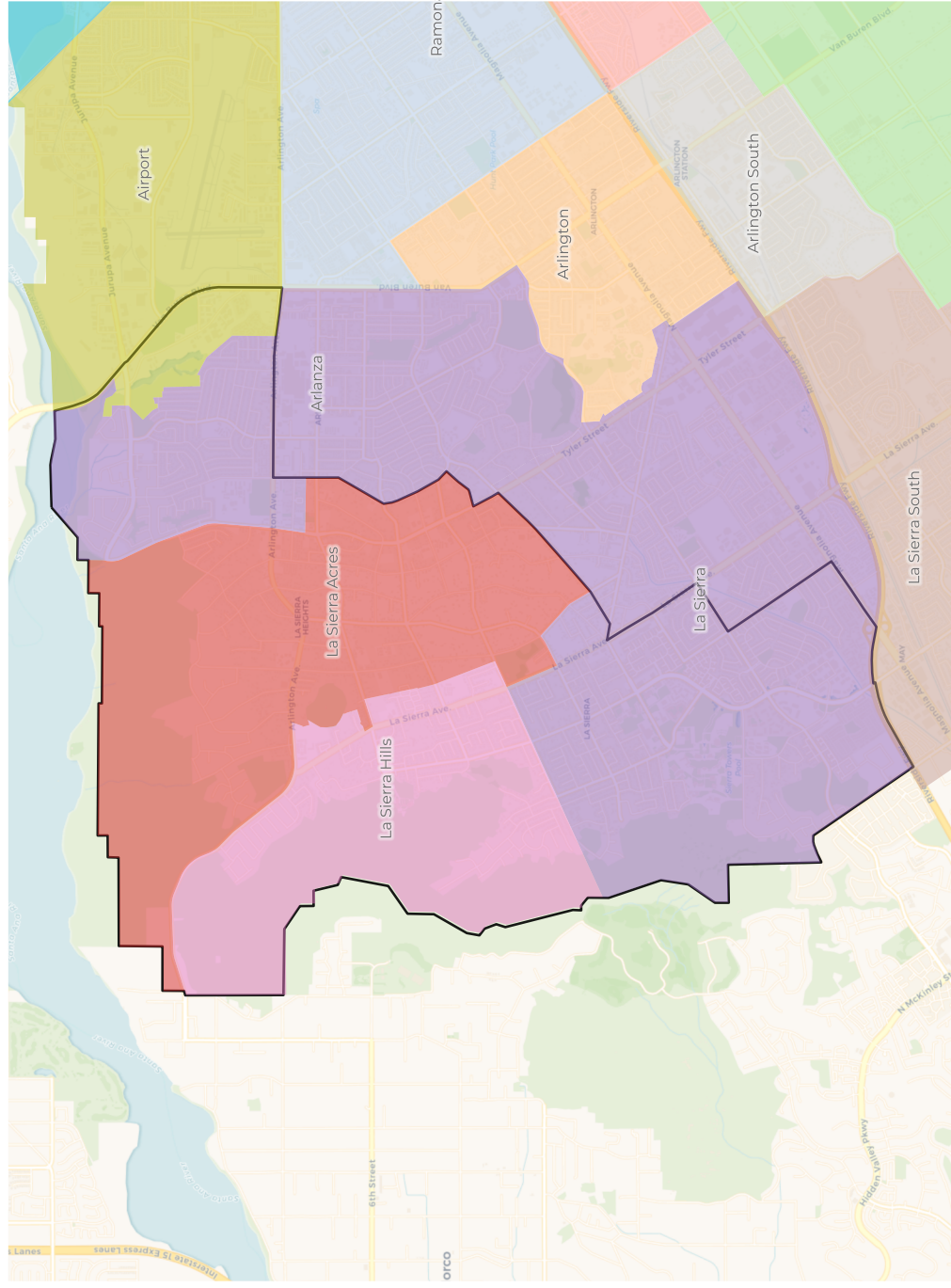


Citizen Voting Age Population

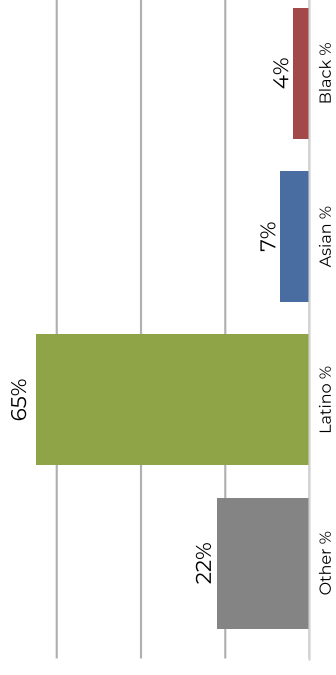


Population	Deviation	Deviation %	Other	Other %	Latino	Latino %	Asian	Asian %	Black	Black %
44,846	-360	-0.8%	8,706	19.4%	31,999	71.4%	2,188	4.9%	1,953	4.4%
Total CVAP	Other CVAP	Other CVAP %	Latino CVAP	Latino CVAP %	Asian CVAP	Asian CVAP %	Black CVAP	Black CVAP %		
26,521	7,202	27.2%	16,102	60.7%	1,569	5.9%	1,648	6.2%		

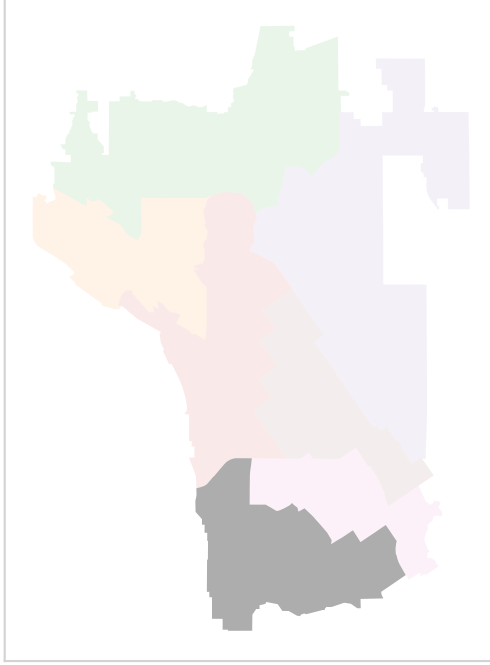
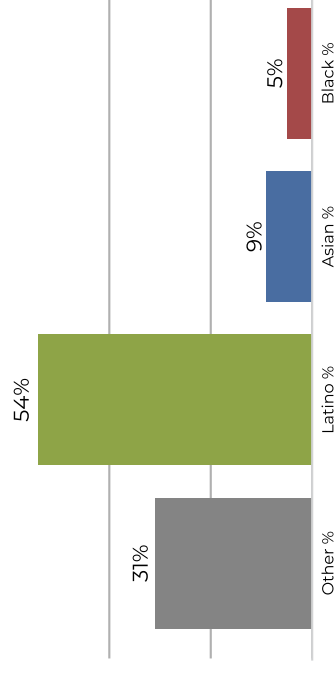
District 7



2020 Census



Citizen Voting Age Population



Population	Deviation	Deviation %	Other	Other %	Latino	Latino %	Asian	Asian %	Black	Black %
45,313	107	0.2%	10,347	22.8%	29,612	65.3%	3,224	7.1%	2,130	4.7%
Total CVAP	Other CVAP	Other CVAP %	Latino CVAP	Latino CVAP %	Asian CVAP	Asian CVAP %	Black CVAP	Black CVAP %		
30,817	9,590	31.1%	16,804	54.5%	2,822	9.2%	1,601	5.2%		