

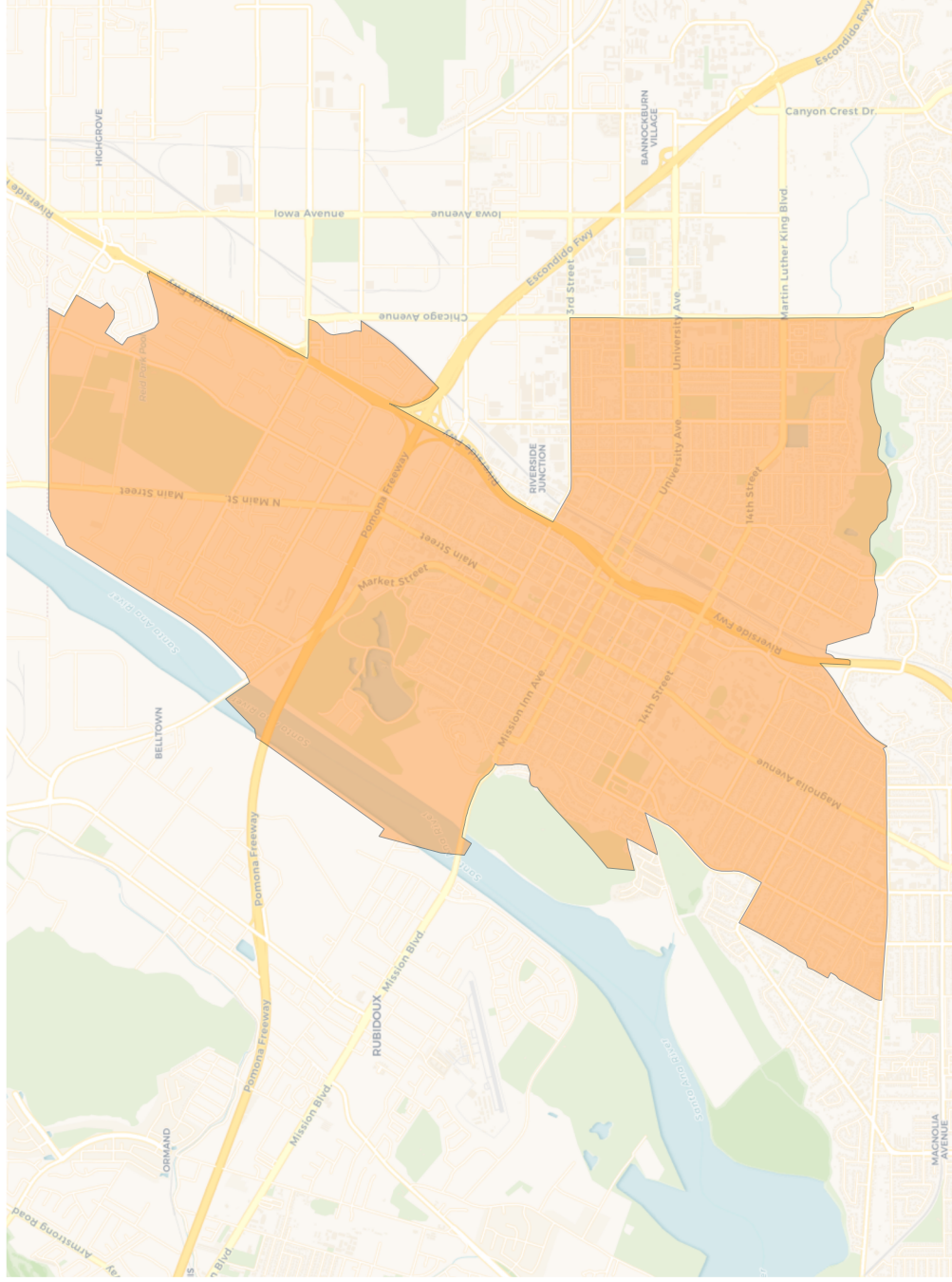
2020 Census

	1	2	3	4	5	6	7
Population	46,532	43,471	42,867	45,567	46,456	46,239	45,313
Deviation	1,326	-1,735	-2,339	361	1,250	1,033	107
Deviation %	2.9%	-3.8%	-5.2%	0.8%	2.8%	2.3%	0.2%
Other	12,229	18,525	16,679	22,232	11,899	9,778	10,347
Other %	26.3%	42.6%	38.9%	48.8%	25.6%	21.1%	22.8%
Latino	29,276	15,189	22,555	14,423	30,281	31,821	29,612
Latino %	62.9%	34.9%	52.6%	31.7%	65.2%	68.8%	65.3%
Asian	1,718	5,938	1,353	5,583	2,041	2,600	3,224
Asian %	3.7%	13.7%	3.2%	12.3%	4.4%	5.6%	7.1%
Black	3,309	3,819	2,280	3,329	2,235	2,040	2,130
Black %	7.1%	8.8%	5.3%	7.3%	4.8%	4.4%	4.7%

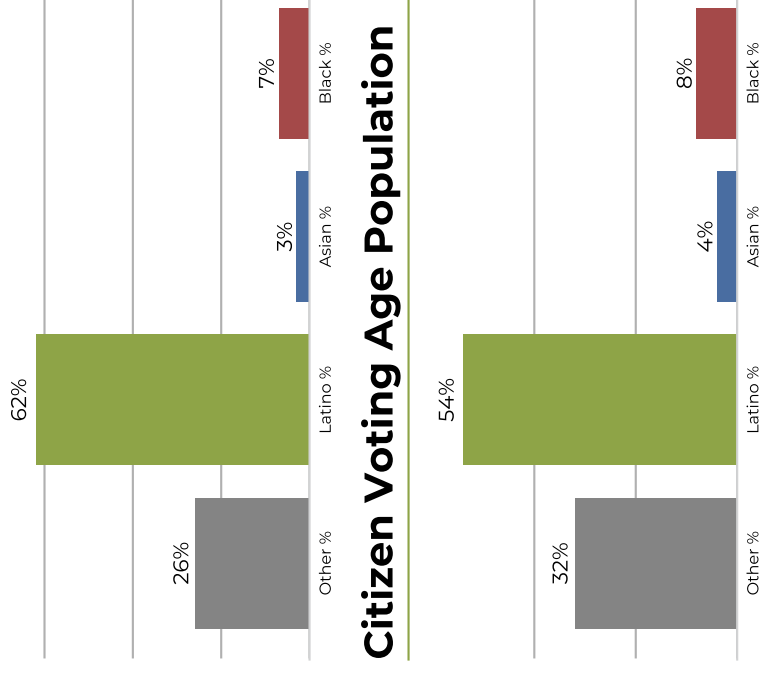
Citizen Voting Age Population (CVAP)

	1	2	3	4	5	6	7
Total CVAP	28,745	32,884	29,692	34,181	32,179	28,226	30,817
Other CVAP	9,389	14,659	14,444	17,905	11,932	8,042	9,590
Other CVAP %	32.7%	44.6%	48.6%	52.4%	37.1%	28.5%	31.1%
Latino CVAP	15,755	11,471	12,720	9,111	16,850	16,454	16,804
Latino CVAP %	54.8%	34.9%	42.8%	26.7%	52.4%	58.3%	54.5%
Asian CVAP	1,267	4,392	921	4,307	1,234	1,927	2,822
Asian CVAP %	4.4%	13.4%	3.1%	12.6%	3.8%	6.8%	9.2%
Black CVAP	2,334	2,362	1,607	2,858	2,163	1,803	1,601
Black CVAP %	8.1%	7.2%	5.4%	8.4%	6.7%	6.4%	5.2%

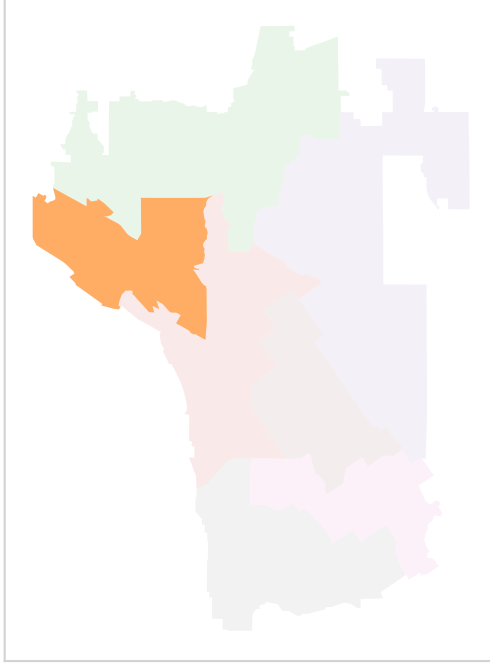
District 1



2020 Census



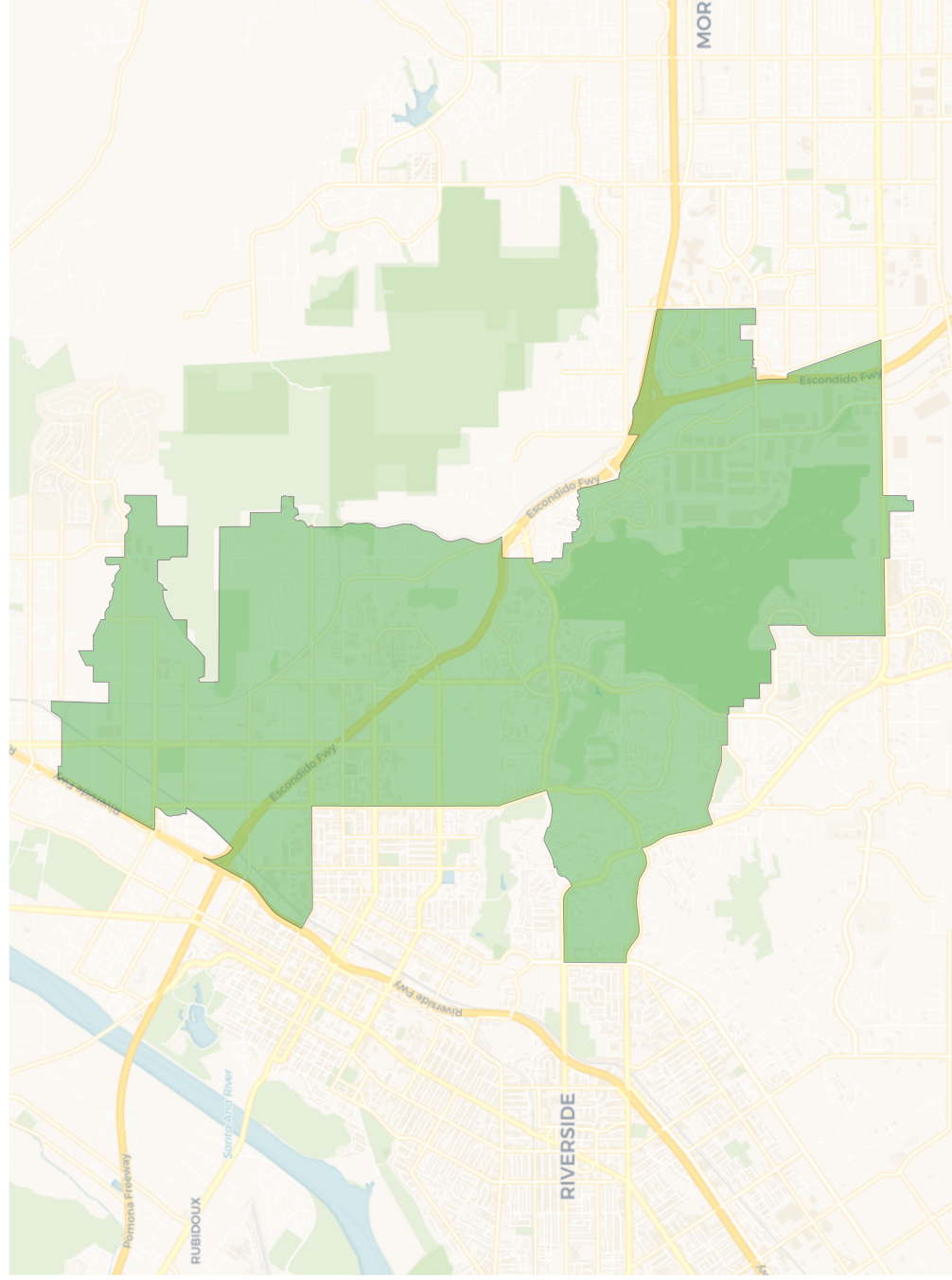
Citizen Voting Age Population



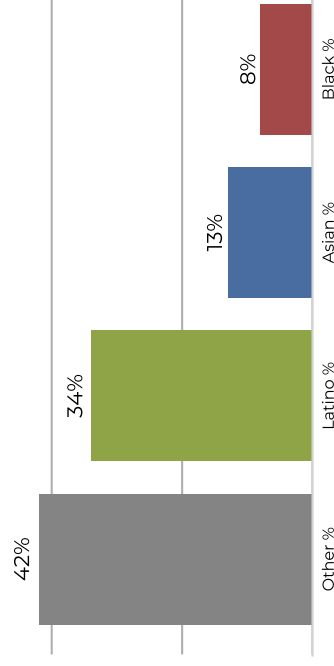
Population	Deviation	Deviation %	Other	Other %	Latino	Latino %	Asian	Asian %	Black	Black %
46,532	1,326	2.9%	12,229	26.3%	29,276	62.9%	1,718	3.7%	3,309	7.1%
Total CVAP	9,389	32.7%	15,755	54.8%	1,267	4.4%	2,334	8.1%		

Other CVAP	Latino CVAP	Asian CVAP	Black CVAP
9,389	15,755	1,267	2,334

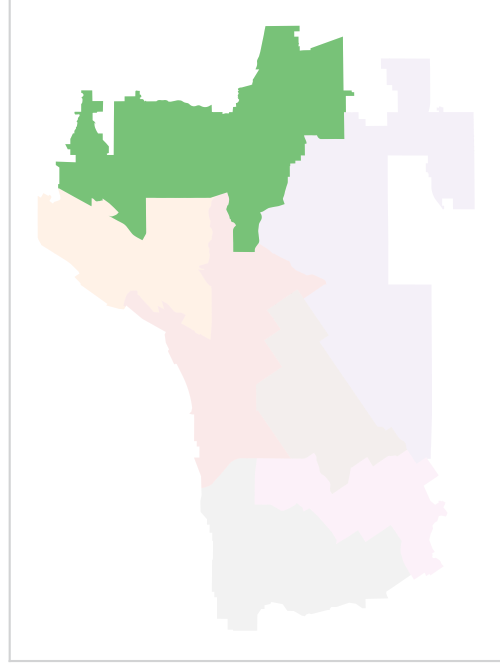
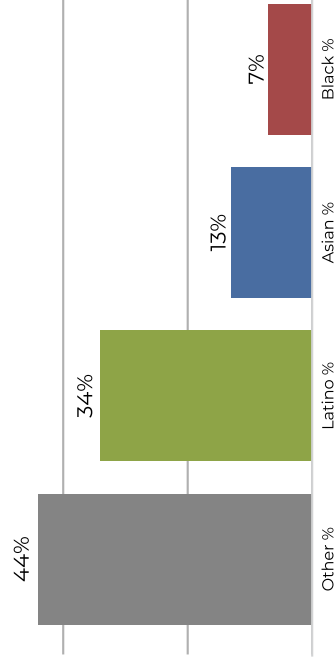
District 2



2020 Census

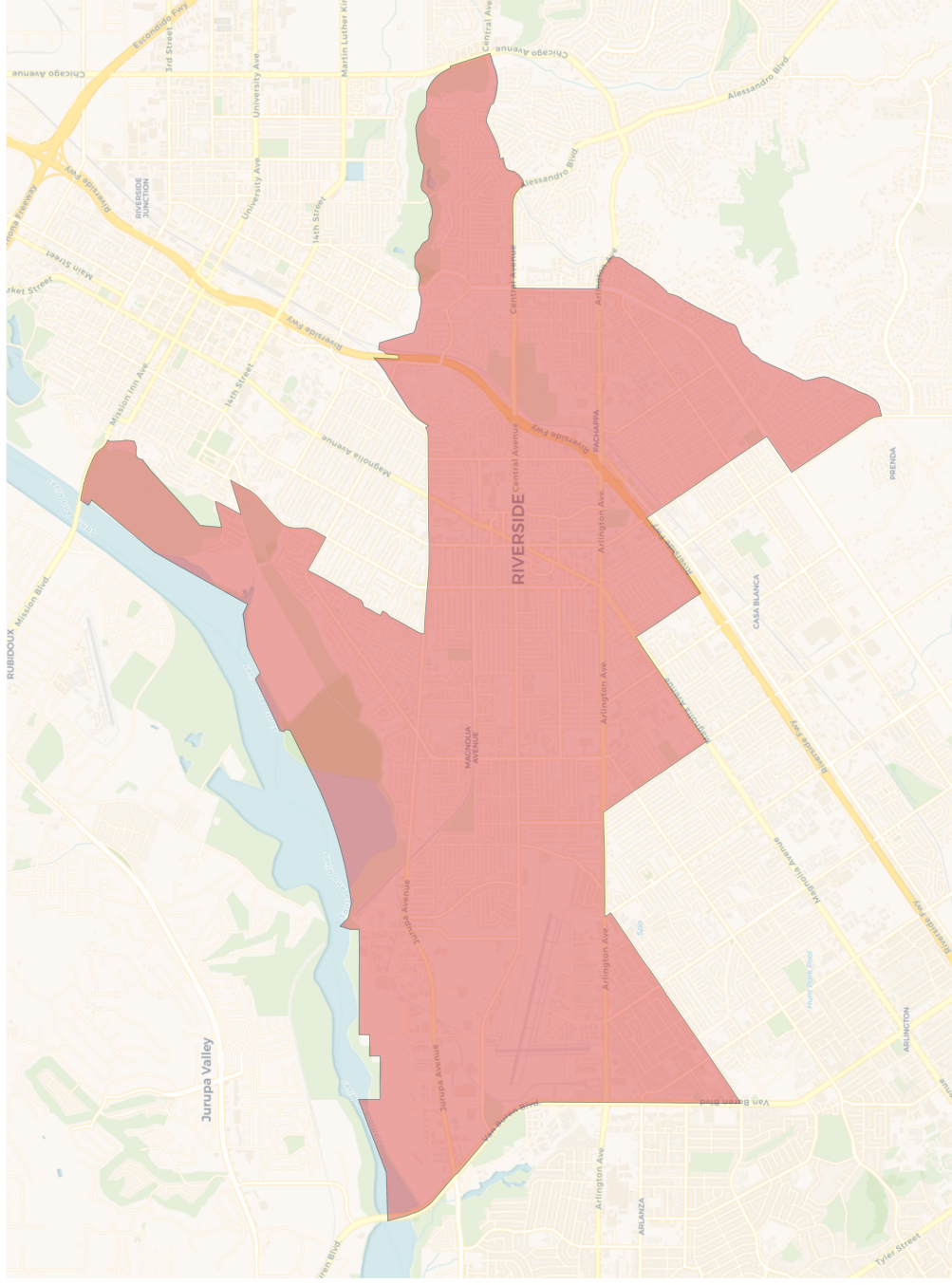


Citizen Voting Age Population

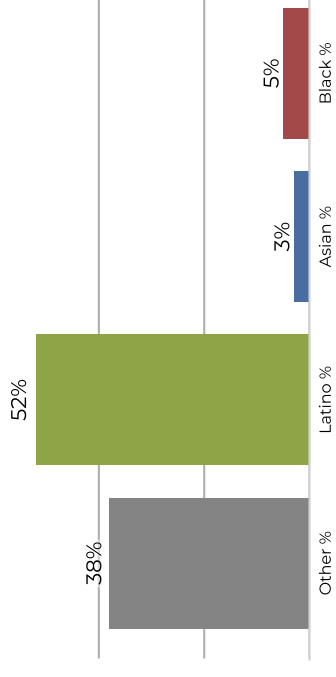


Population	Deviation	Deviation %	Other	Other %	Latino	Latino %	Latino CVAP	Latino CVAP %	Asian	Asian %	Asian CVAP	Asian CVAP %	Black	Black %	Black CVAP	Black CVAP %
43,471	-1,735	-3.8%	18,525	42.6%	15,189	34.9%	4,392	34.9%	5,938	13.7%	3,819	13.4%	3,819	8.8%	2,362	7.2%
Total CVAP																
32,884	14,659	44.6%	11,471	42.6%	11,471	34.9%	4,392	34.9%	5,938	13.4%	2,362	13.4%	2,362	7.2%	2,362	7.2%

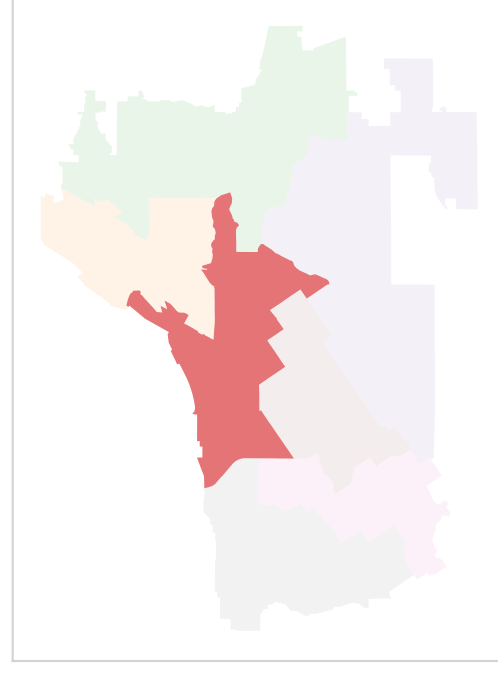
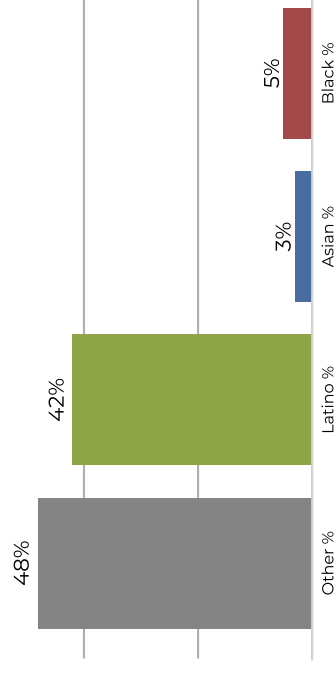
District 3



2020 Census

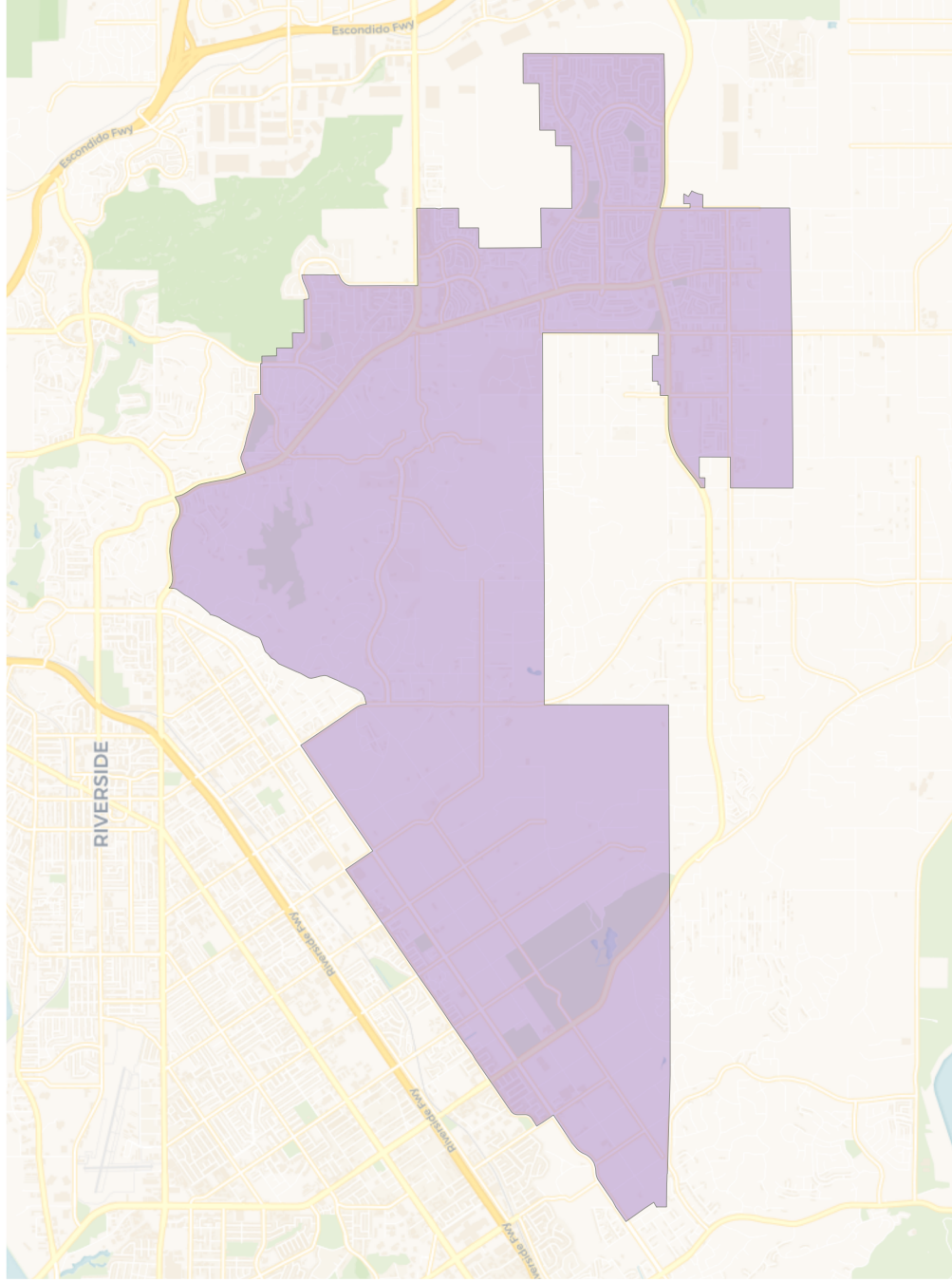


Citizen Voting Age Population

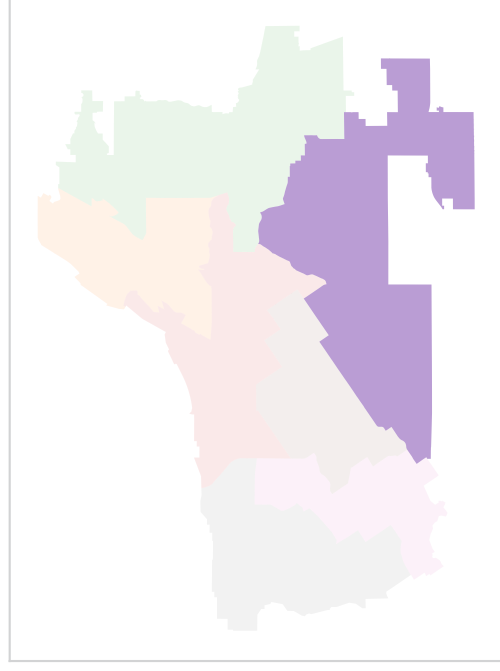
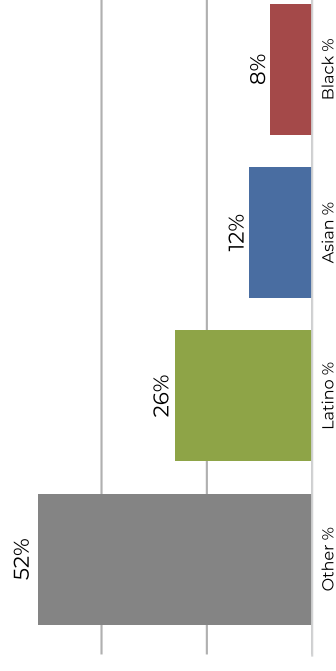
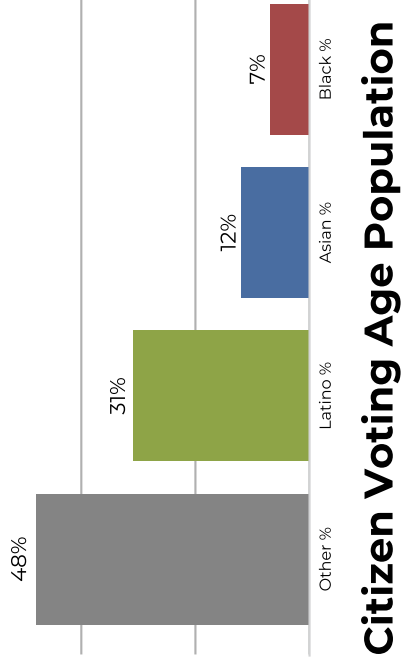


Population	Deviation	Deviation %	Other	Other %	Latino	Latino %	Asian	Asian %	Black	Black %
42,867	-2,339	-5.2%	16,679	38.9%	22,555	52.6%	1,353	3.2%	2,280	5.3%
Total CVAP	Other CVAP	Other CVAP %	Latino CVAP	Latino CVAP %	Asian CVAP	Asian CVAP %	Black CVAP	Black CVAP %		
29,692	14,444	48.6%	12,720	42.8%	921	3.1%	1,607	5.4%		

District 4

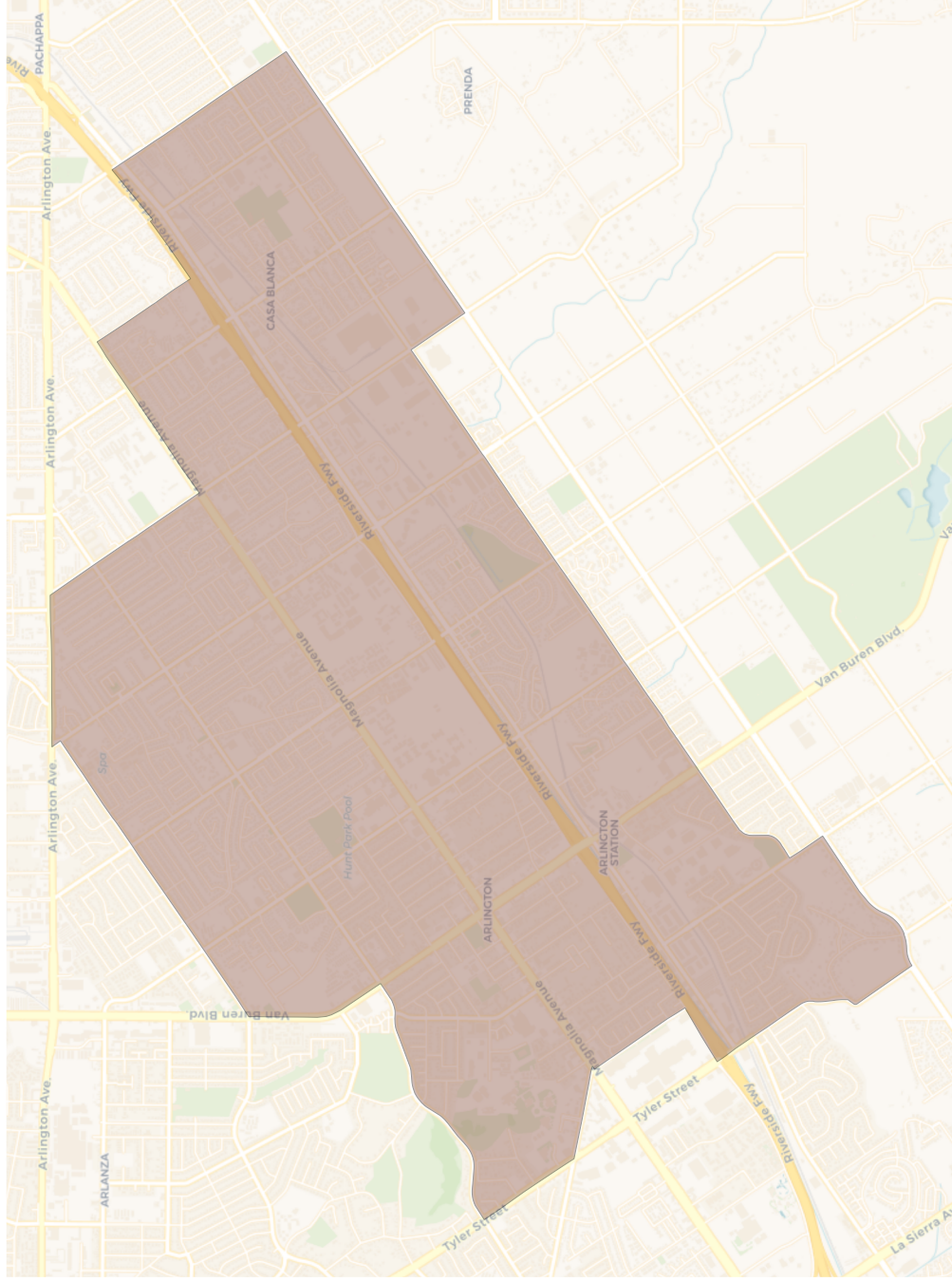


2020 Census

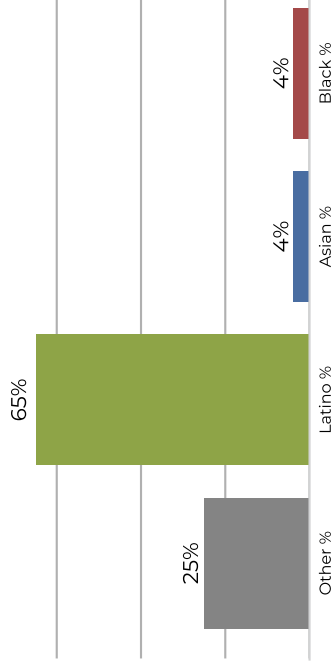


Population	Deviation	Deviation %	Other	Other %	Latino	Latino %	Asian	Asian %	Black	Black %
45,567	361	0.8%	22,232	48.8%	14,423	31.7%	5,583	12.3%	3,329	7.3%
Total CVAP	Other CVAP	Other CVAP %	Latino CVAP	Latino CVAP %	Asian CVAP	Asian CVAP %	Black CVAP	Black CVAP %		
34,181	17,905	52.4%	9,111	26.7%	4,307	12.6%	2,858	8.4%		

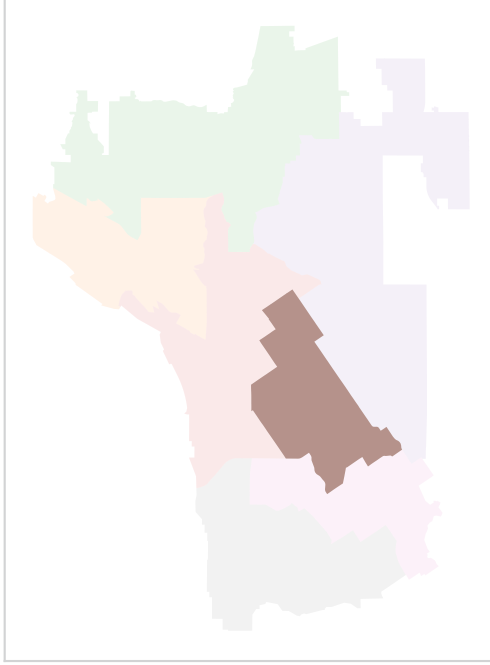
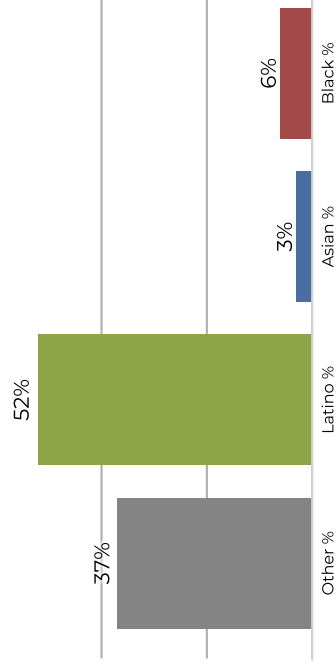
District 5



2020 Census

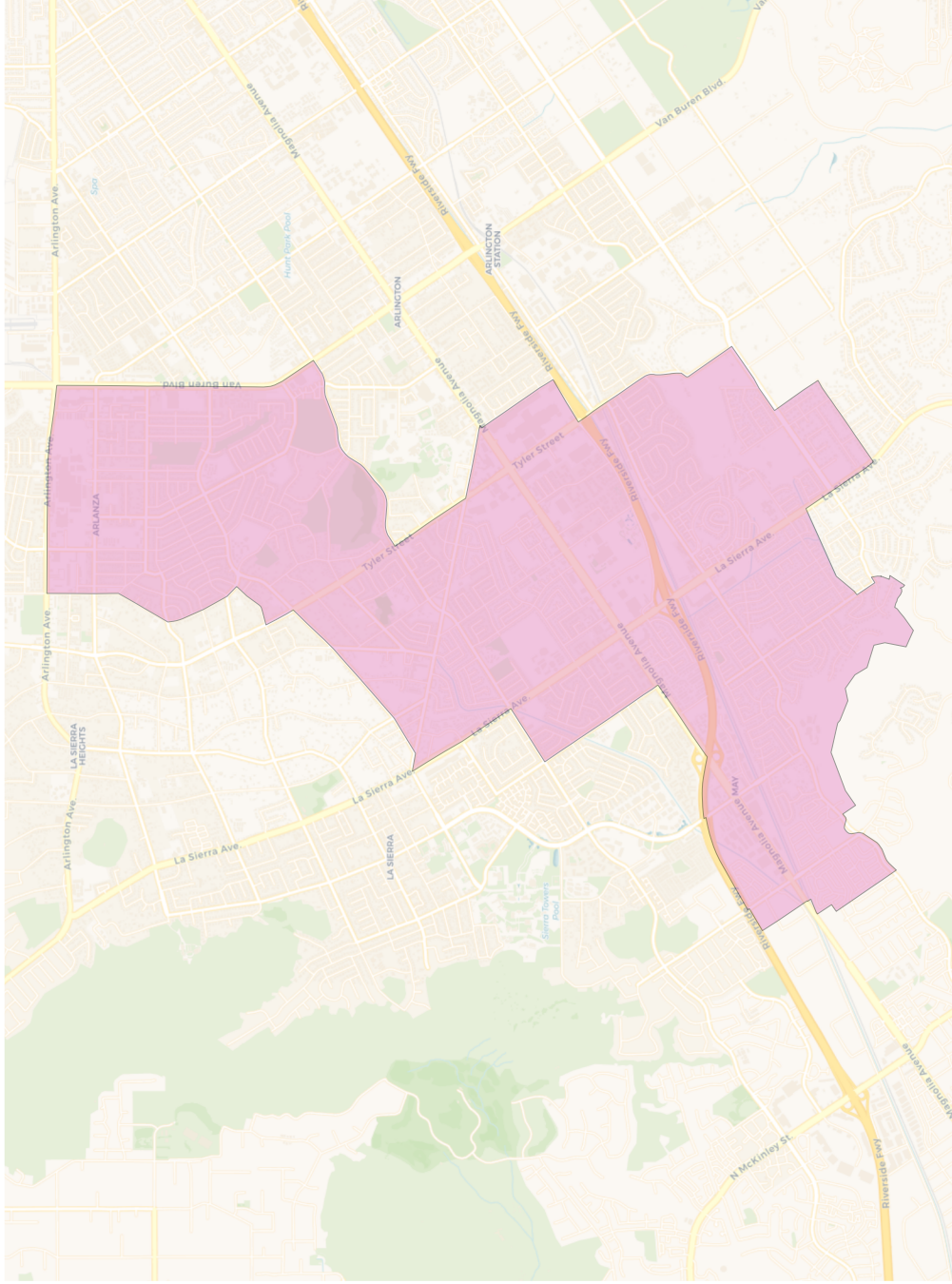


Citizen Voting Age Population

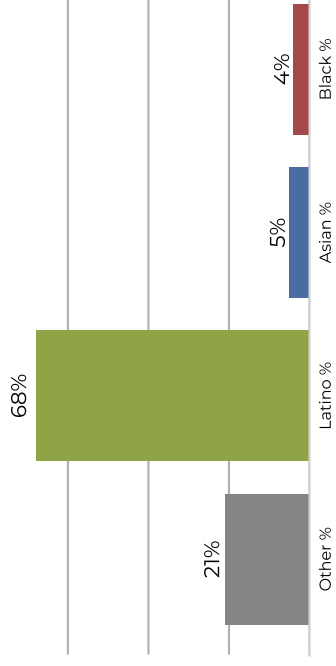


Population	Deviation	Deviation %	Other	Other %	Latino	Latino %	Asian	Asian %	Black	Black %
46,456	1,250	2.8%	11,899	25.6%	30,281	65.2%	2,041	4.4%	2,235	4.8%
Total CVAP	Other CVAP	Other CVAP %	Latino CVAP	Latino CVAP %	Asian CVAP	Asian CVAP %	Black CVAP	Black CVAP %		
32,179	11,932	37.1%	16,850	52.4%	1,234	3.8%	2,163	6.7%		

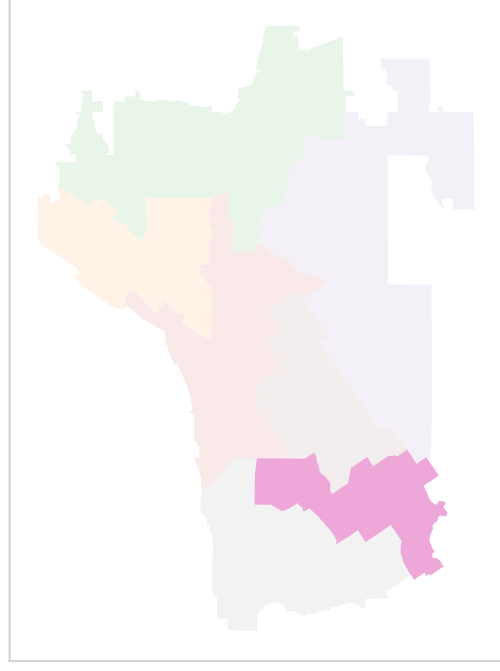
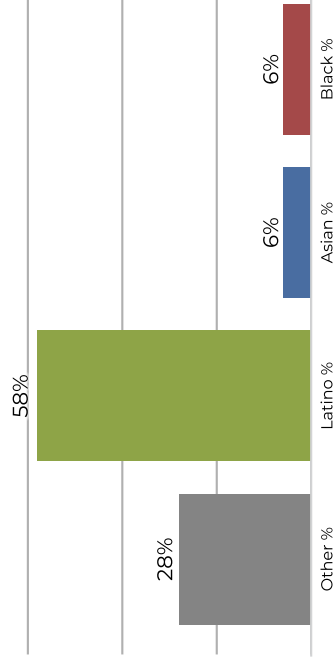
District 6



2020 Census

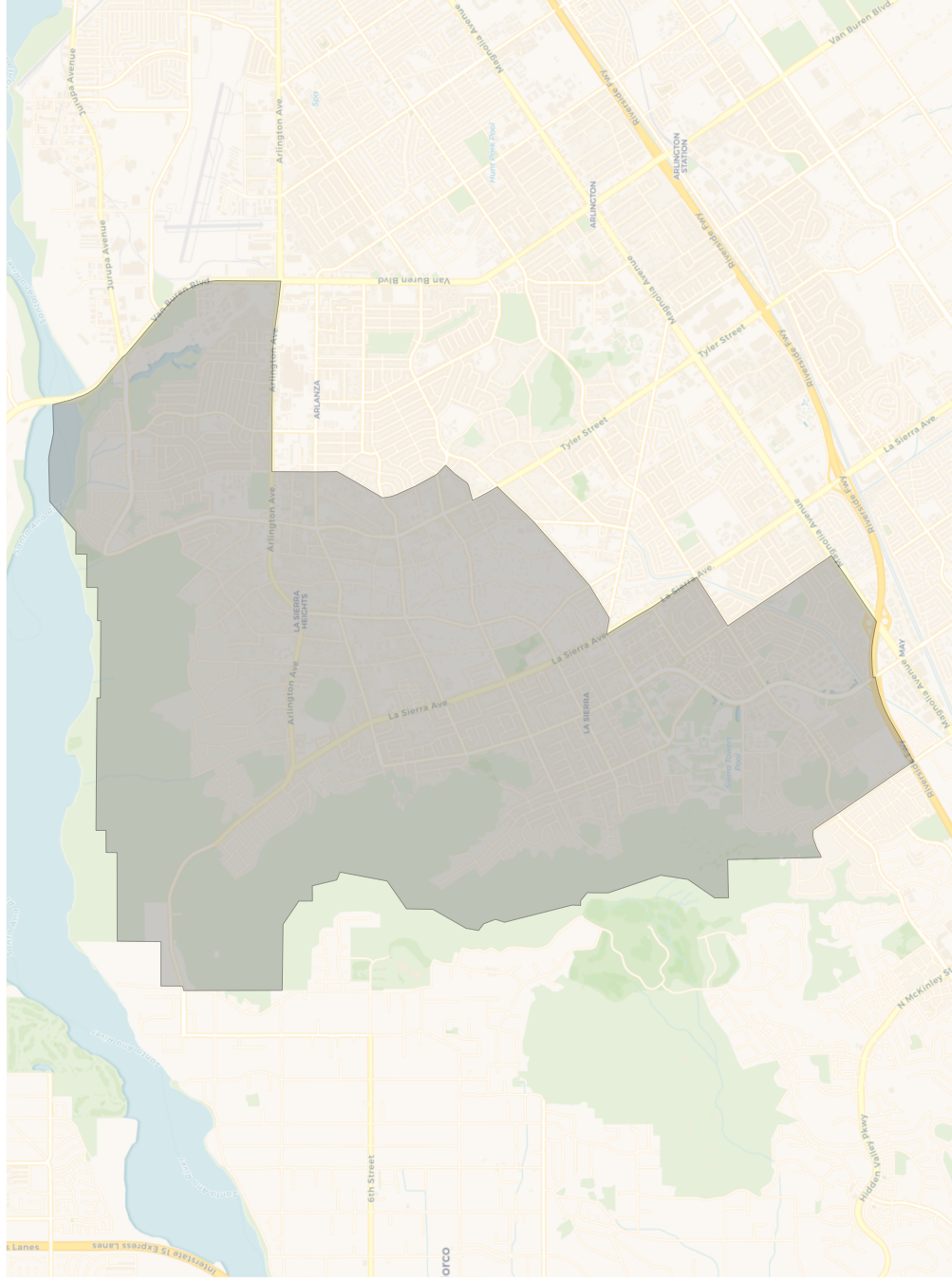


Citizen Voting Age Population

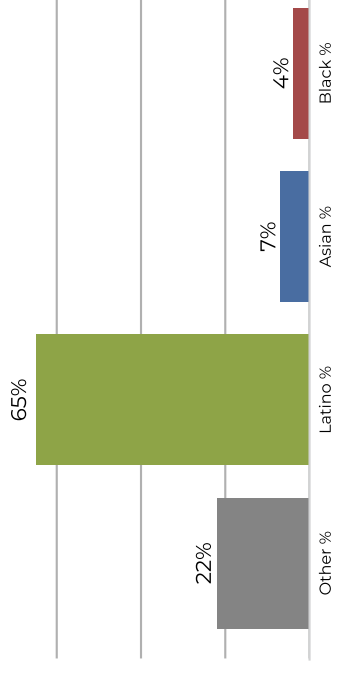


Population	Deviation	Deviation %	Other	Other %	Latino	Latino %	Latino CVAP	Latino CVAP %	Asian	Asian %	Asian CVAP	Asian CVAP %	Black	Black %	Black CVAP	Black CVAP %	
46,239	1,033	2.3%	9,778	21.1%	31,821	68.8%	2,600	5.6%	2,040	4.4%	1,803	6.4%	2,040	4.4%	1,803	6.4%	
Total CVAP	28,226	8,042	28.5%	16,454	58.3%	1,927	6.8%	1,803	6.4%	1,803	6.4%	1,803	6.4%	1,803	6.4%	1,803	6.4%

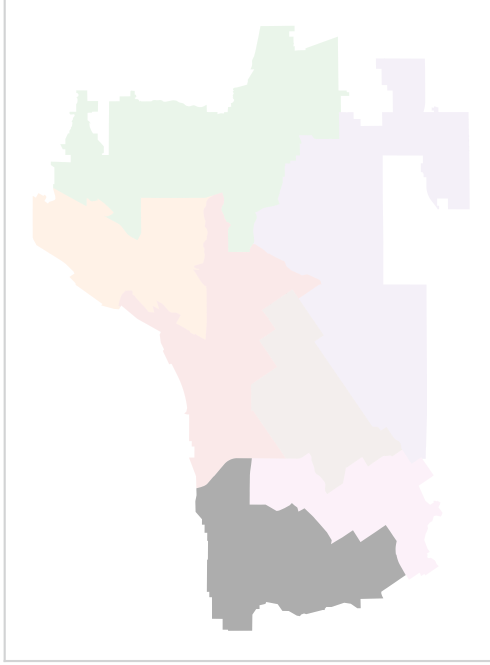
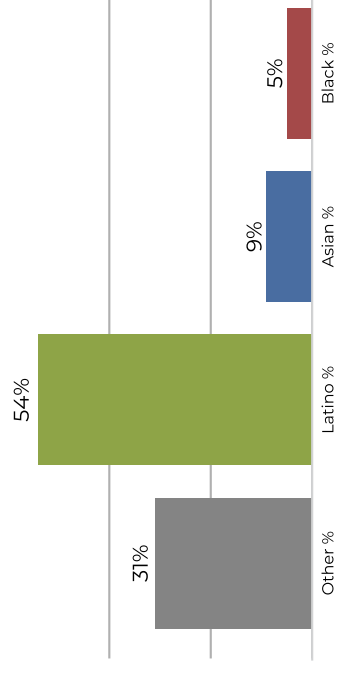
District 7



2020 Census



Citizen Voting Age Population



Population	Deviation	Deviation %	Other	Other %	Latino	Latino %	Asian	Asian %	Black	Black %
45,313	107	0.2%	10,347	22.8%	29,612	65.3%	3,224	7.1%	2,130	4.7%
Total CVAP	Other CVAP	Other CVAP %	Latino CVAP	Latino CVAP %	Asian CVAP	Asian CVAP %	Black CVAP	Black CVAP %	Latino %	Black %
30,817	9,590	31.1%	16,804	54.5%	2,822	9.2%	1,601	5.2%		