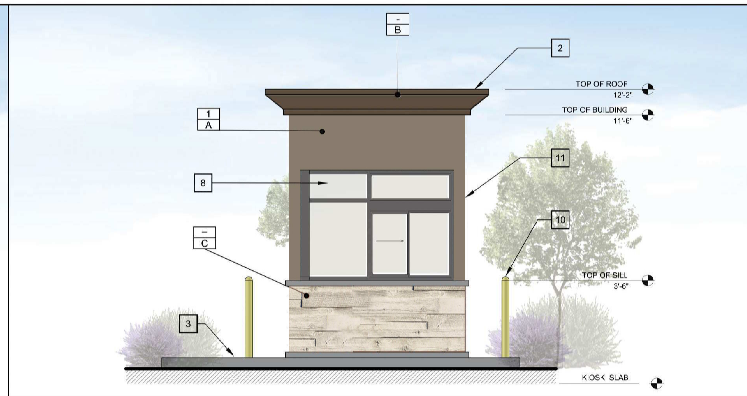


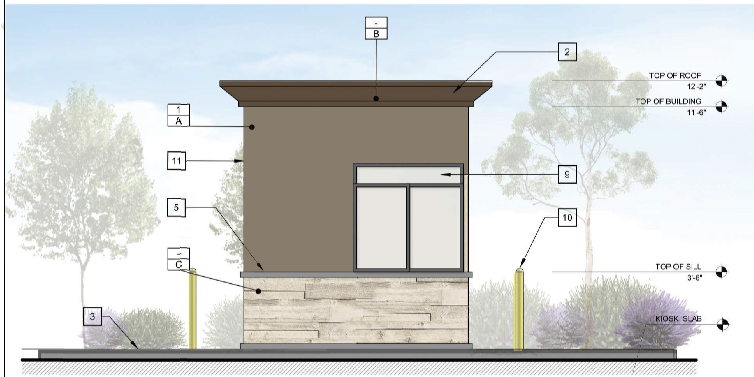
4 NORTH ELEVATIONS

SCALE: 3/8" = 1'-0"



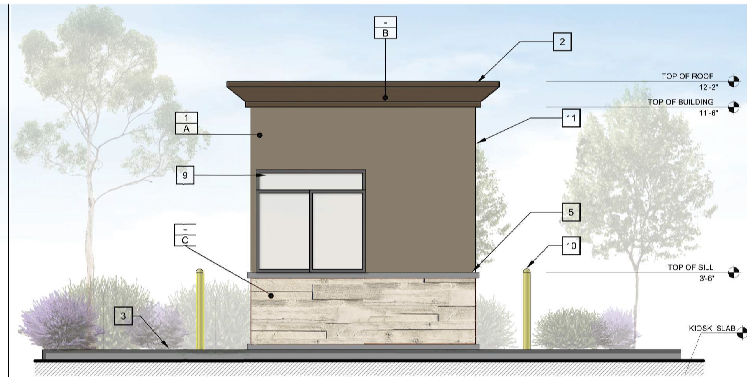
3 SOUTH ELEVATIONS

SCALE: 3/8" = 1'-0"



5 WEST ELEVATIONS

SCALE: 3/8" = 1'-0"



2 EAST ELEVATIONS

SCALE: 3/8" = 1'-0"

KEYED NOTES

- 1 EXTERIOR SILL TO BE FINISHED
- 2 8" CANOPY (ACM CANOPY TO BE PAINTED)
- 3 6" PCF FOUNDATION
- 4 ACCESS DOOR
- 5 STONE MOLDING CHISELED STONE SILL - LIGHT GREY BY CORONADO STONE
- 6 ACCESS DOOR
- 7 RESORB COTTO TILE & STONE ACETIC EXTERIOR FINISH COORD TO EXIST
- 8 ACCESS SERVICE WINDOW
- 9 WINDOW
- 10 42" HIGH BOLLARD
- 11 MASONRY WALL

EXTERIOR COLORS & FINISHES

- 1 SHERWIN WILLIAMS PAINT #SW 6535 - SHERIDY
- A SHERWIN WILLIAMS PAINT #SW 7034 - STATUS BRONZE
- E WINDSEBANK COVERWOOD #LJ082C FIVE
- C



SHERWIN WILLIAMS PAINT #SW 6535 - SHERIDY



SHERWIN WILLIAMS PAINT #SW 7034 - STATUS BRONZE



WINDSEBANK COVERWOOD #LJ082C FIVE

Rev. #	Description	Date

Job #:	M - 1075
Scale:	08/29/22
Date:	AS NOTED
Drawn By:	SPD

6006-HERNIMAN BLVD.	KIOSK ELEVATION
RIVERSIDE, CA 92504	

KE