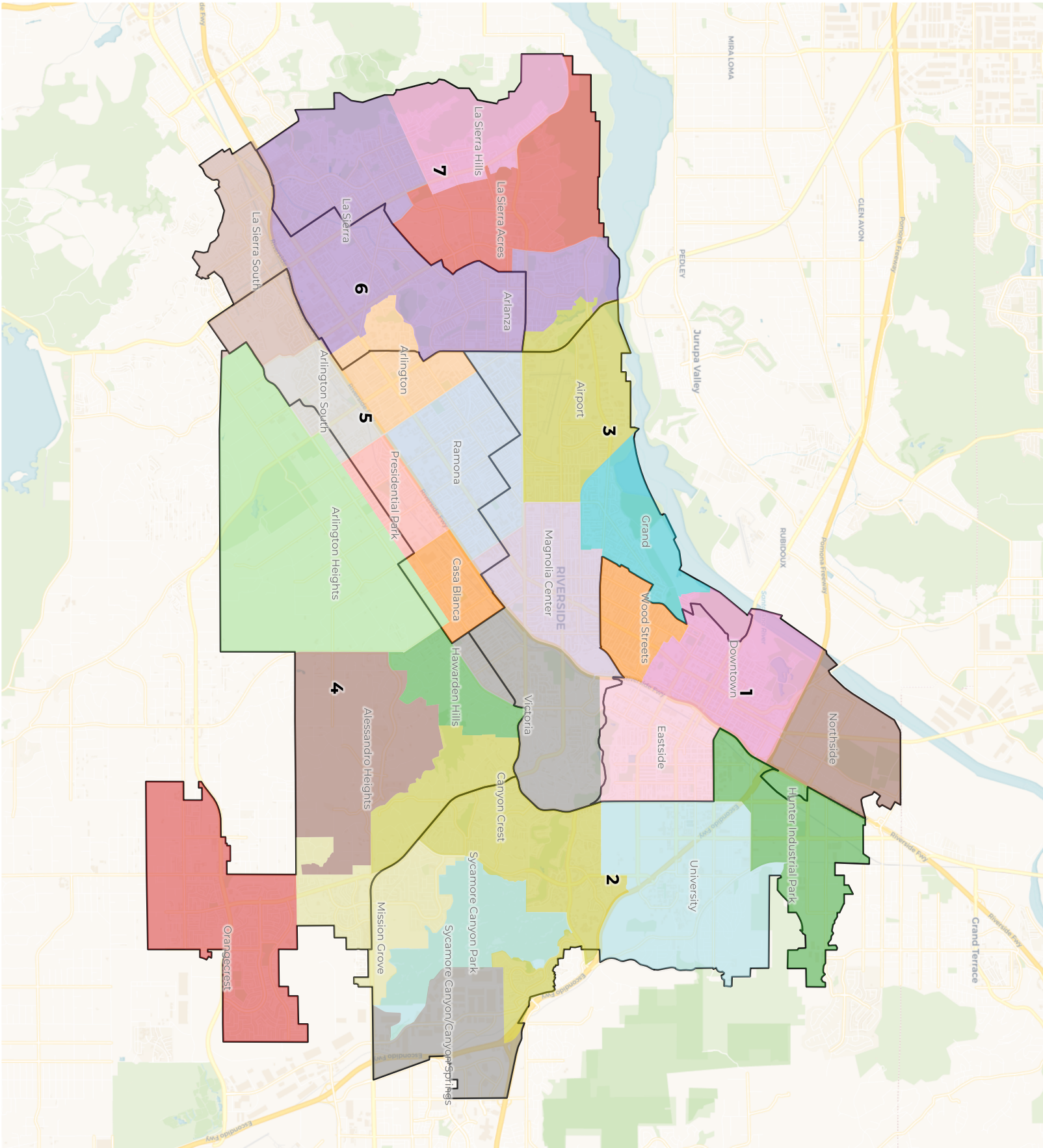




REDISTRICTING PARTNERS

City of Riverside

Draft A4.C with neighborhoods



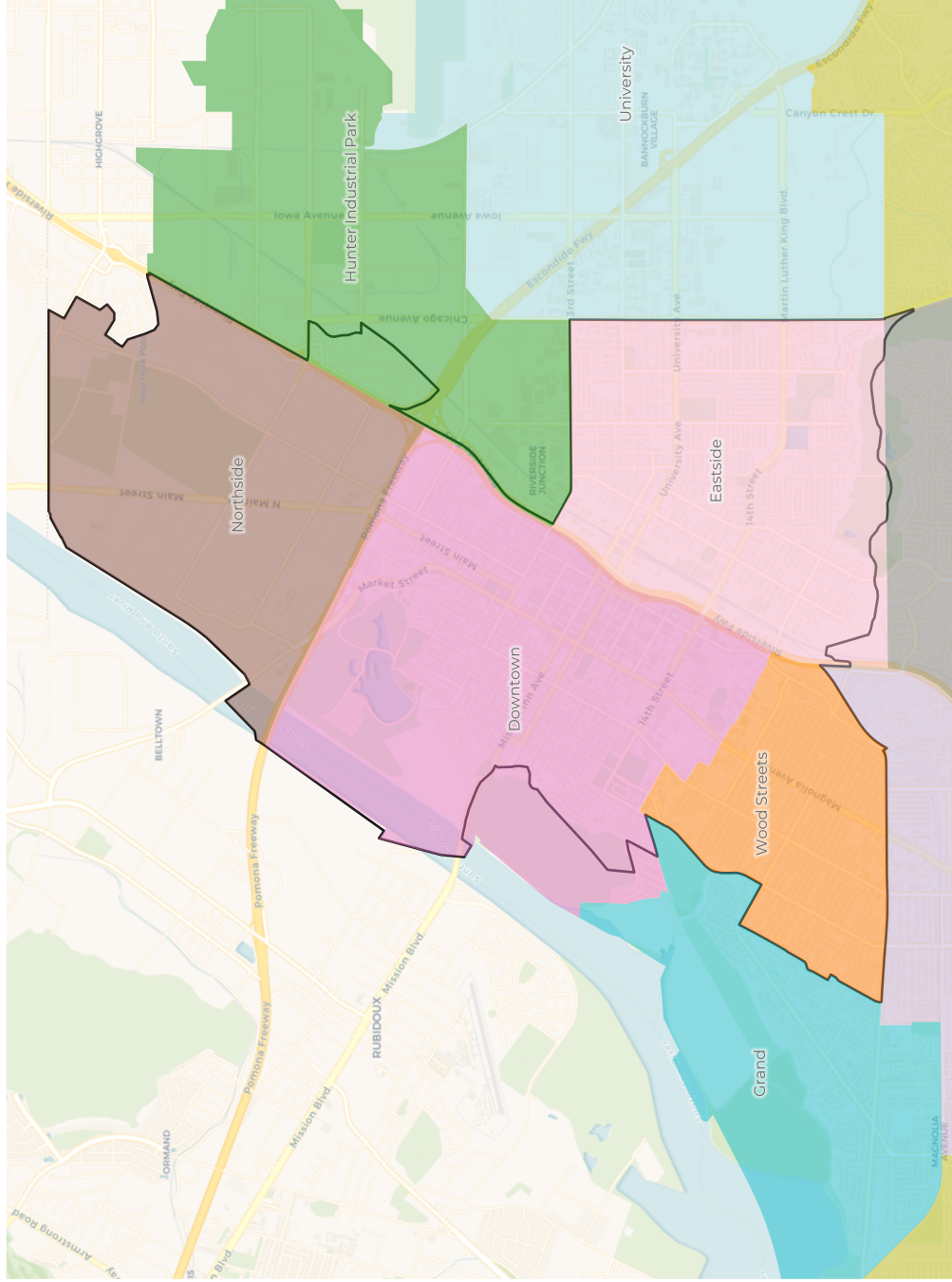
2020 Census

	1	2	3	4	5	6	7
Population	46,532	46,001	44,252	43,333	46,168	44,846	45,313
Deviation	1,326	795	-954	-1,873	962	-360	107
Deviation %	2.9%	1.8%	-2.1%	-4.1%	2.1%	-0.8%	0.2%
Other	12,229	19,650	17,085	21,093	12,579	8,706	10,347
Other %	26.3%	42.7%	38.6%	48.7%	27.2%	19.4%	22.8%
Latino	29,276	15,937	23,449	13,921	28,963	31,999	29,612
Latino %	62.9%	34.6%	53.0%	32.1%	62.7%	71.4%	65.3%
Asian	1,718	6,338	1,419	5,225	2,345	2,188	3,224
Asian %	3.7%	13.8%	3.2%	12.1%	5.1%	4.9%	7.1%
Black	3,309	4,076	2,299	3,094	2,281	1,953	2,130
Black %	7.1%	8.9%	5.2%	7.1%	4.9%	4.4%	4.7%

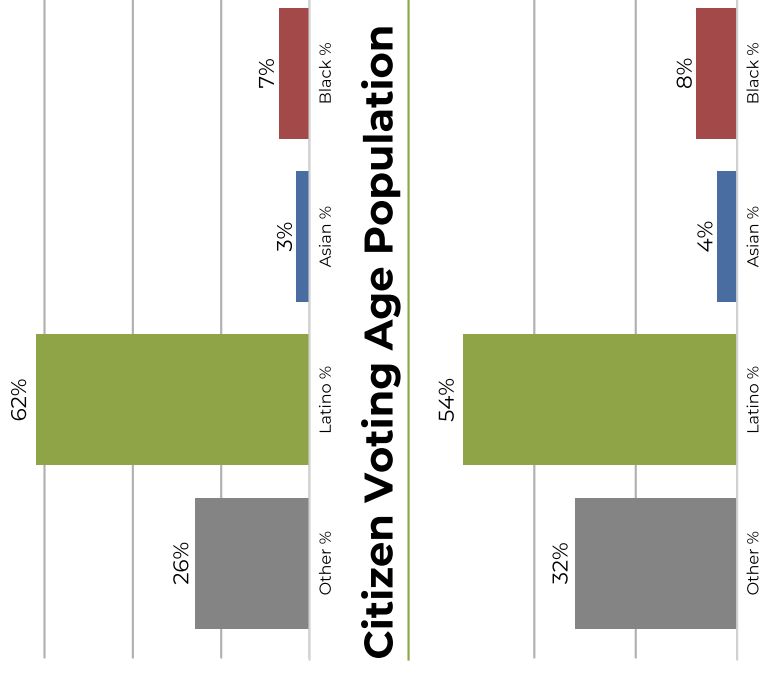
Citizen Voting Age Population (CVAP)

	1	2	3	4	5	6	7
Total CVAP	28,745	34,186	30,789	33,040	32,626	26,521	30,817
Other CVAP	9,389	15,344	14,871	17,165	12,400	7,202	9,590
Other CVAP %	32.7%	44.9%	48.3%	52.0%	38.0%	27.2%	31.1%
Latino CVAP	15,755	11,984	13,263	8,849	16,408	16,102	16,804
Latino CVAP %	54.8%	35.1%	43.1%	26.8%	50.3%	60.7%	54.5%
Asian CVAP	1,267	4,428	905	4,350	1,529	1,569	2,822
Asian CVAP %	4.4%	13.0%	2.9%	13.2%	4.7%	5.9%	9.2%
Black CVAP	2,334	2,430	1,750	2,676	2,289	1,648	1,601
Black CVAP %	8.1%	7.1%	5.7%	8.1%	7.0%	6.2%	5.2%

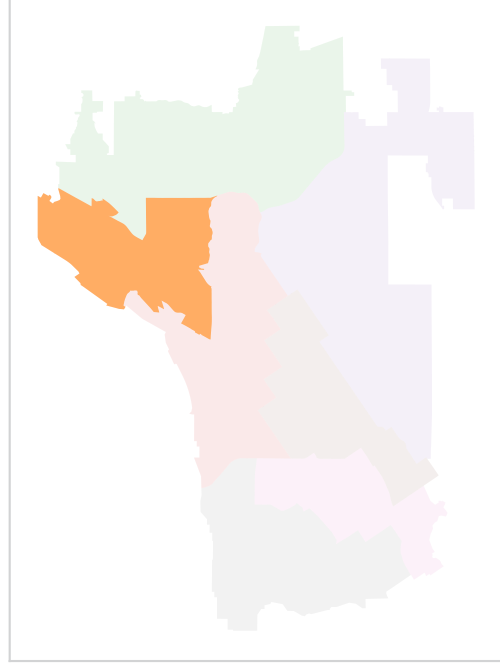
District 1



2020 Census

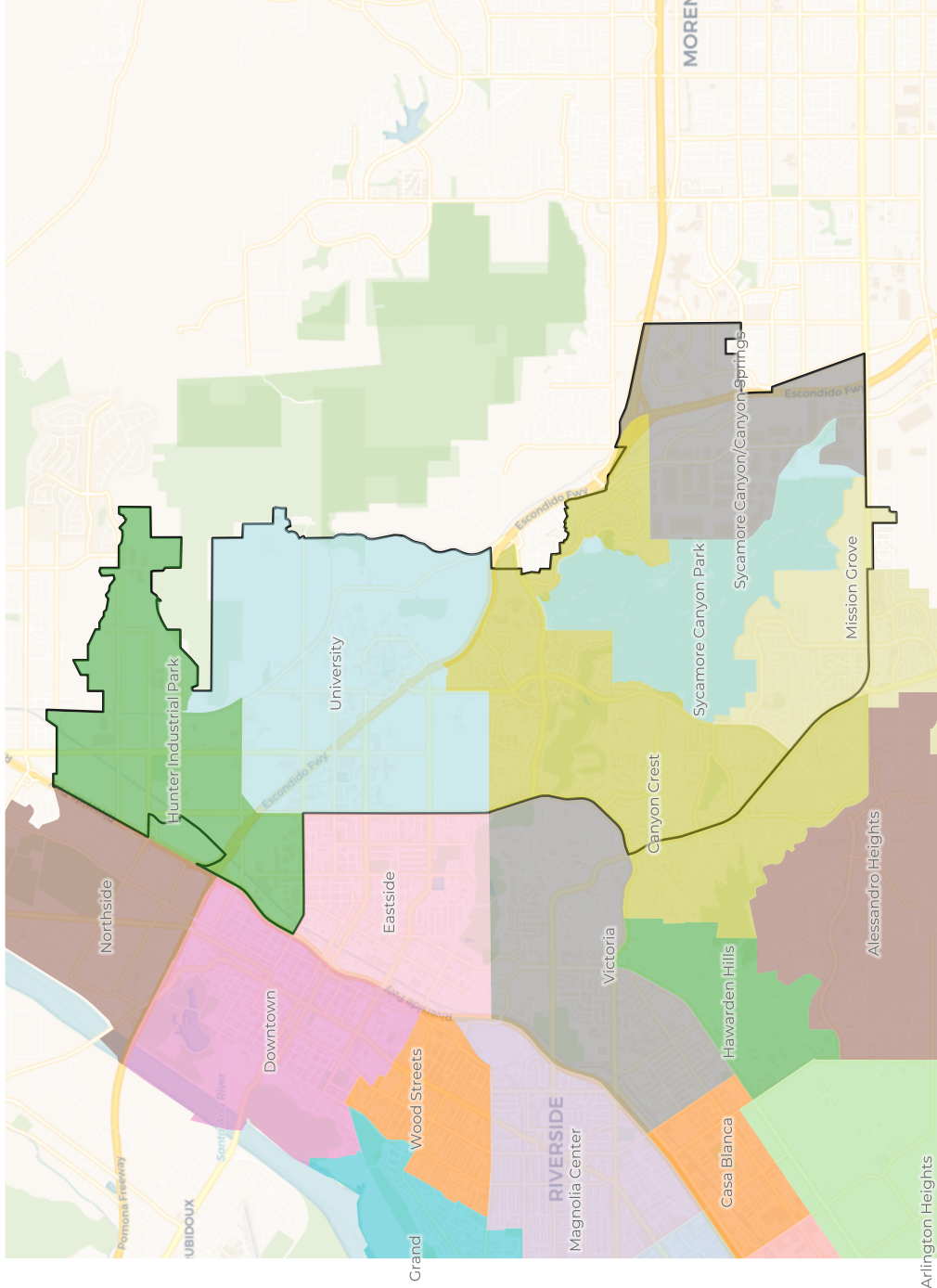


Citizen Voting Age Population

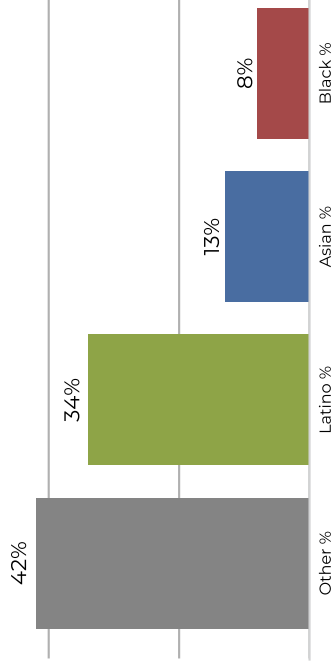


Population	Deviation	Deviation %	Other	Other %	Latino	Latino %	Latino CVAP	Latino CVAP %	Asian	Asian %	Asian CVAP	Asian CVAP %	Black	Black %	Black CVAP	Black CVAP %	
46,532	1,326	2.9%	12,229	26.3%	29,276	62.9%	1,718	3.7%	3,309	7.1%	2,334	4.4%	3,309	7.1%	2,334	4.4%	
Total CVAP	28,745	9,389	32.7%	15,755	54.8%	1,267	4.4%	1,267	4.4%	2,334	8.1%	2,334	8.1%	2,334	8.1%	2,334	8.1%

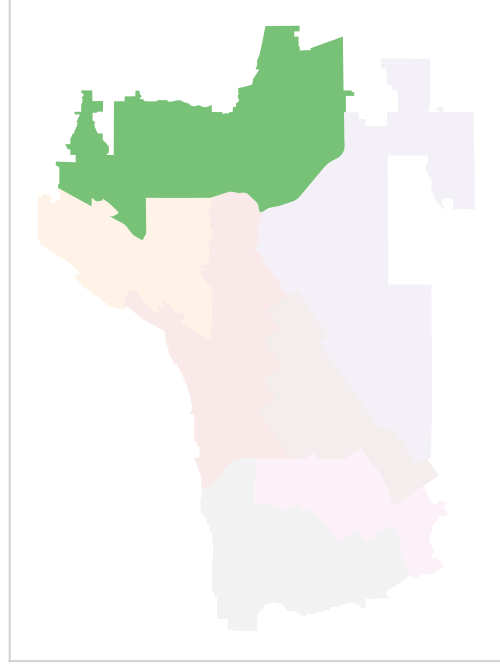
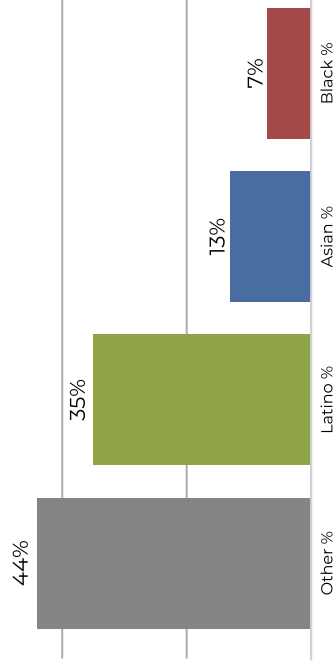
District 2



2020 Census

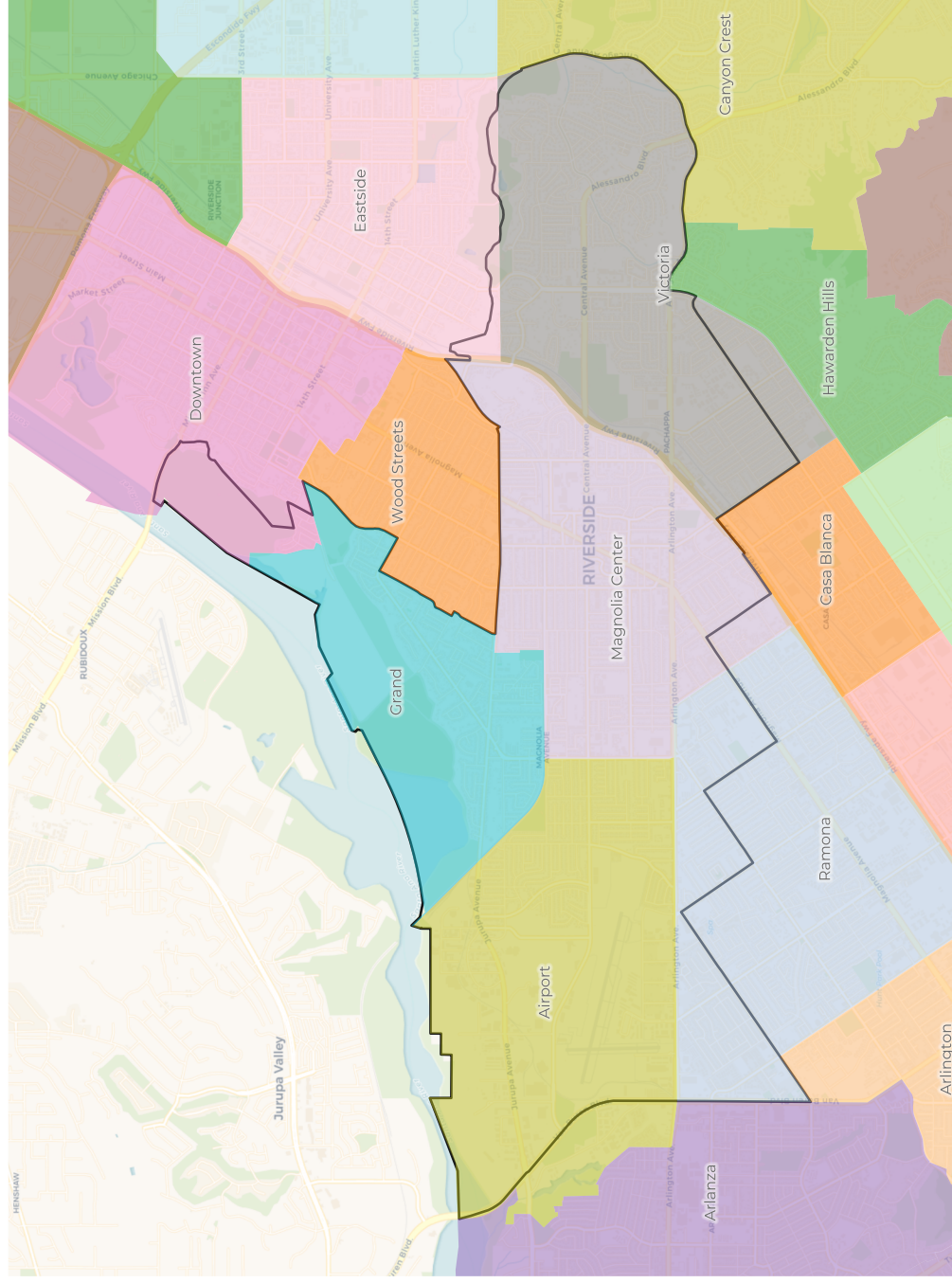


Citizen Voting Age Population

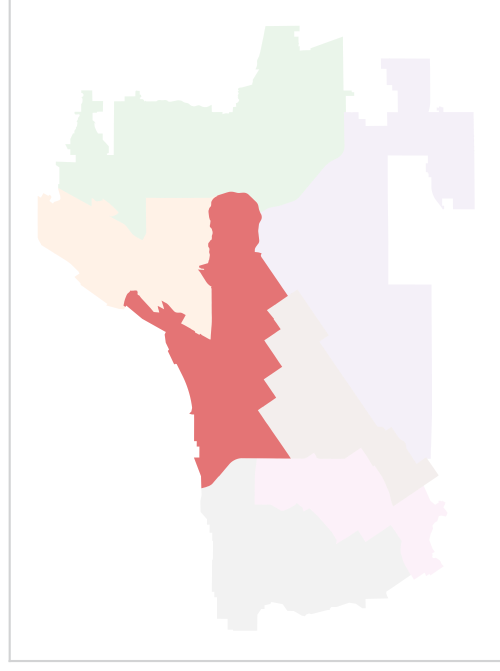
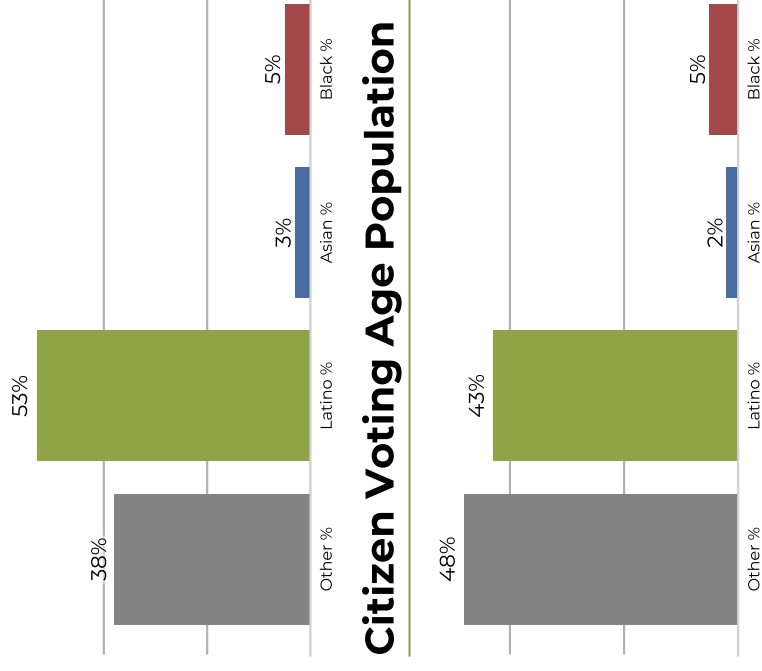


Population	Deviation	Deviation %	Other	Other %	Latino	Latino %	Asian	Asian %	Black	Black %
46,001	795	1.8%	19,650	42.7%	15,937	34.6%	6,338	13.8%	4,076	8.9%
Total CVAP	Other CVAP	Other CVAP %	Latino CVAP	Latino CVAP %	Asian CVAP	Asian CVAP %	Black CVAP	Black CVAP %		
34,186	15,344	44.9%	11,984	35.1%	4,428	13.0%	2,430	7.1%		

District 3

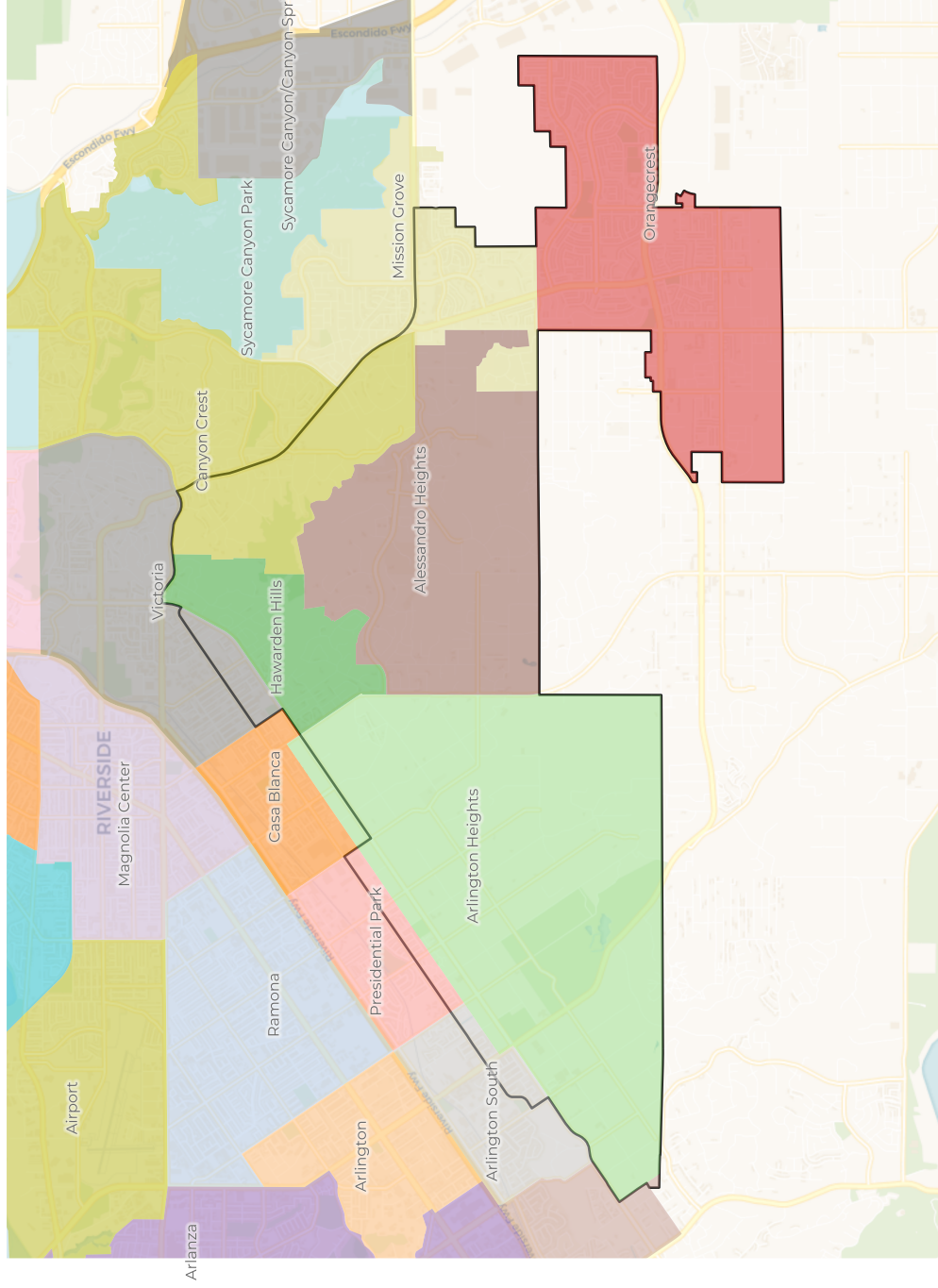


2020 Census

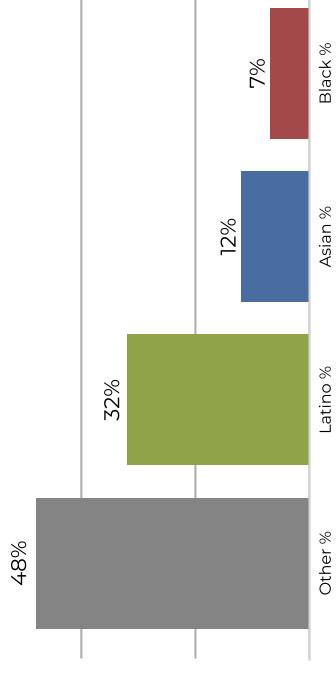


Population	Deviation	Deviation %	Other	Other %	Latino	Latino %	Asian	Asian %	Black	Black %
44,252	-954	-2.1%	17,085	38.6%	23,449	53.0%	1,419	3.2%	2,299	5.2%
Total CVAP	Other CVAP	Other CVAP %	Latino CVAP	Latino CVAP %	Asian CVAP	Asian CVAP %	Black CVAP	Black CVAP %		
30,789	14,871	48.3%	13,263	43.1%	905	2.9%	1,750	5.7%		

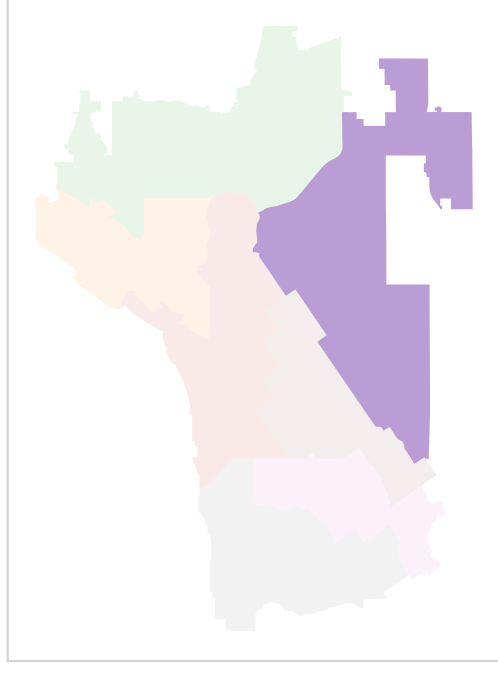
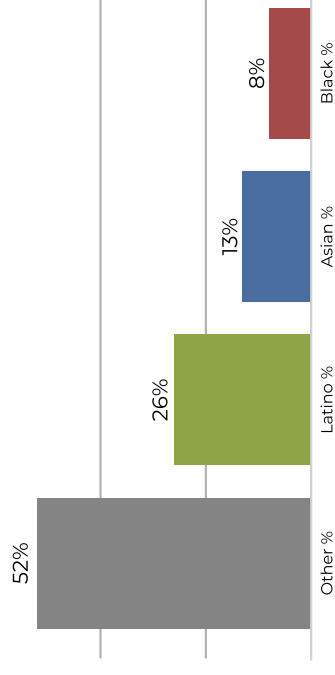
District 4



2020 Census

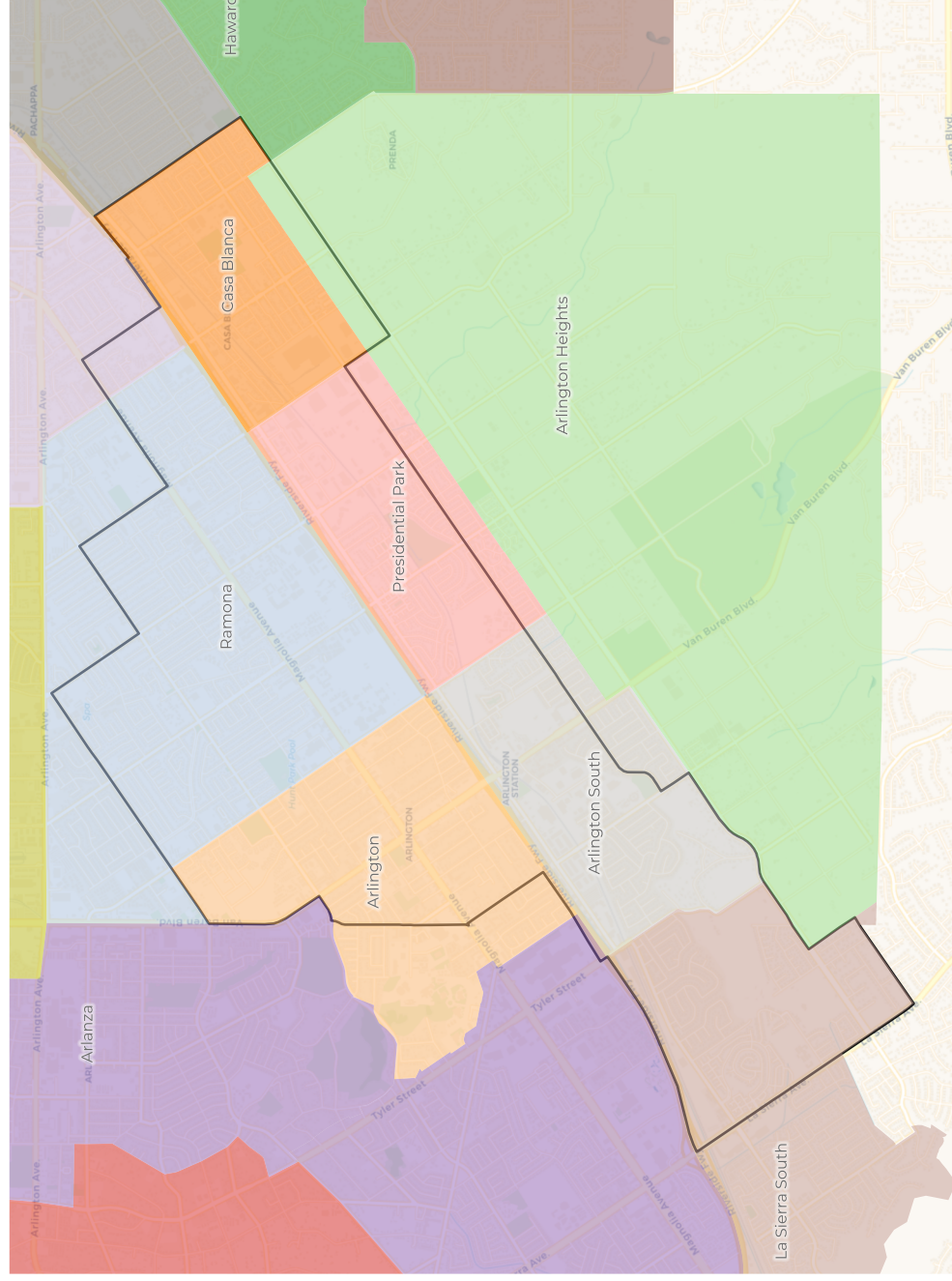


Citizen Voting Age Population

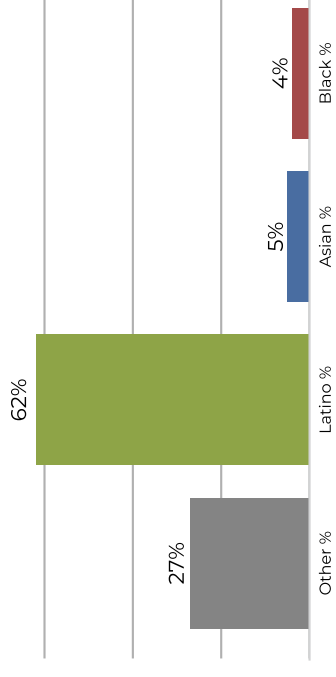


Population	Deviation	Deviation %	Other	Other %	Latino	Latino %	Asian	Asian %	Black	Black %
43,333	-1,873	-4.1%	21,093	48.7%	13,921	32.1%	5,225	12.1%	3,094	7.1%
Total CVAP	Other CVAP	Other CVAP %	Latino CVAP	Latino CVAP %	Asian CVAP	Asian CVAP %	Black CVAP	Black CVAP %		
33,040	17,165	52.0%	8,849	26.8%	4,350	13.2%	2,676	8.1%		

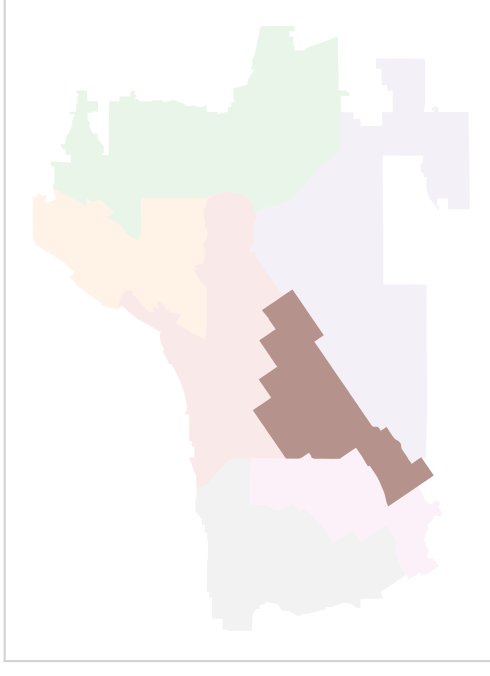
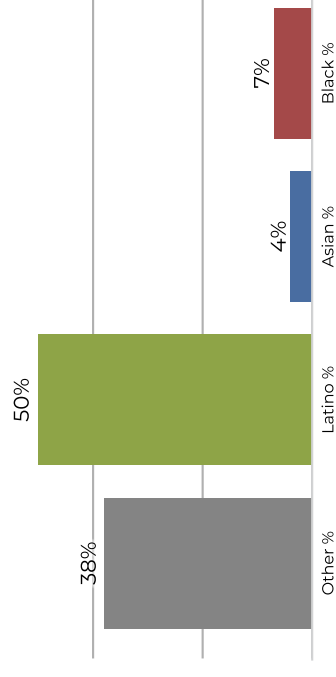
District 5



2020 Census



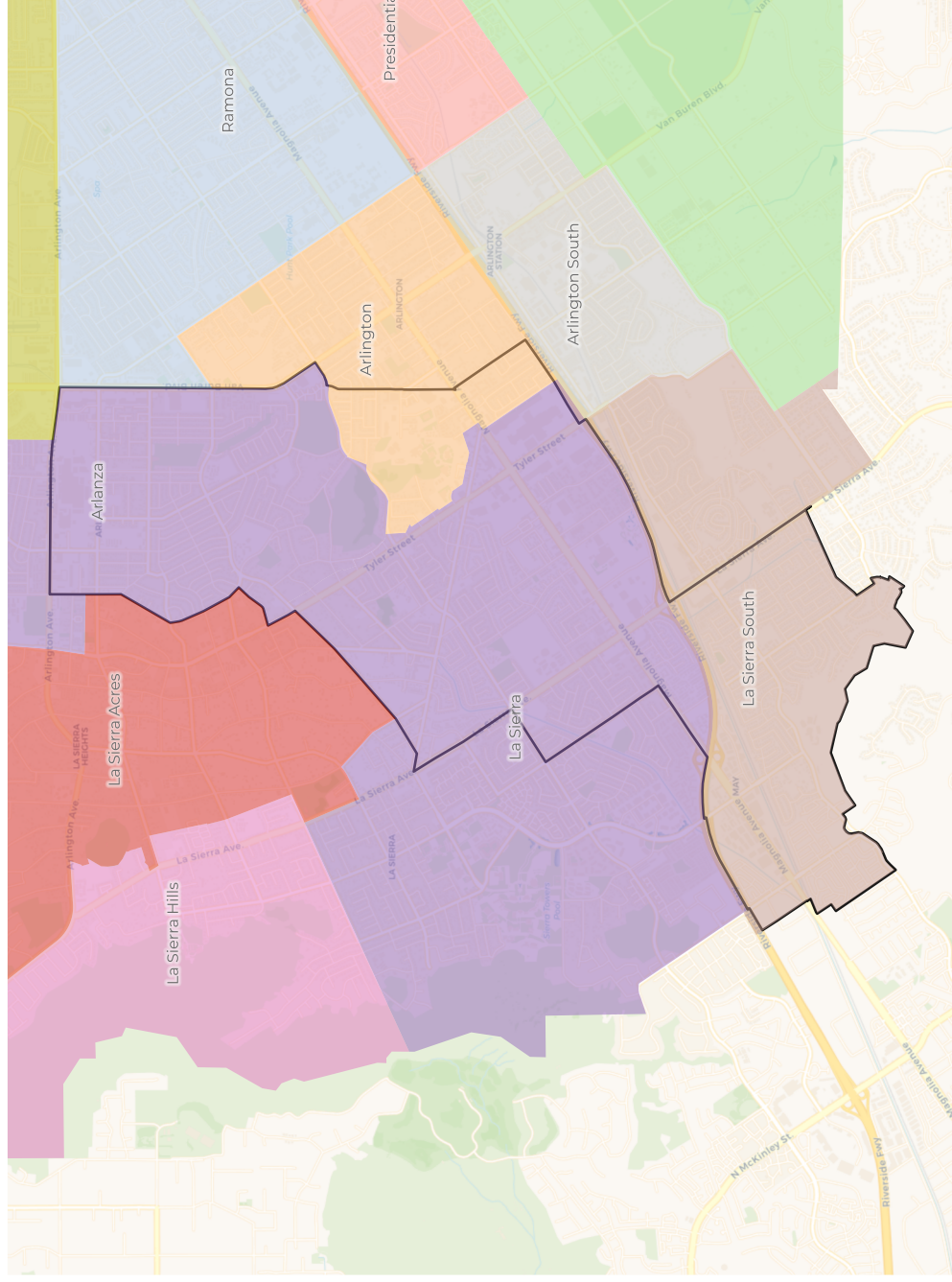
Citizen Voting Age Population



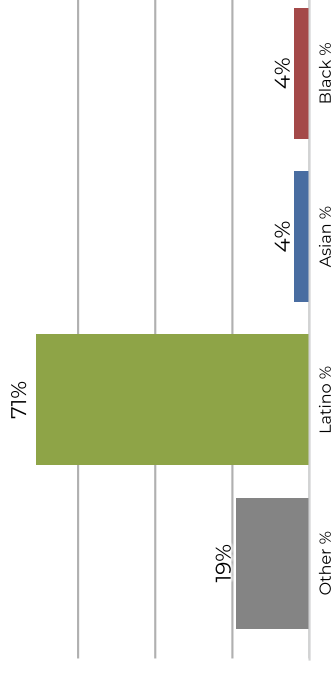
Population	Deviation	Deviation %	Other	Other %	Latino	Latino %	Asian	Asian %	Black	Black %
46,168	962	2.1%	12,579	27.2%	28,963	62.7%	2,345	5.1%	2,281	4.9%
Total CVAP	12,400	38.0%	16,408	50.3%	1,529	4.7%	2,289	7.0%		

Other CVAP	Latino CVAP	Asian CVAP	Black CVAP
12,400	16,408	1,529	2,289

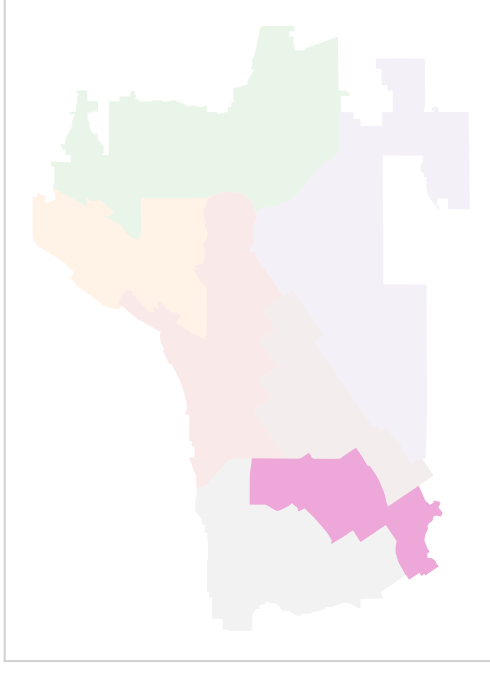
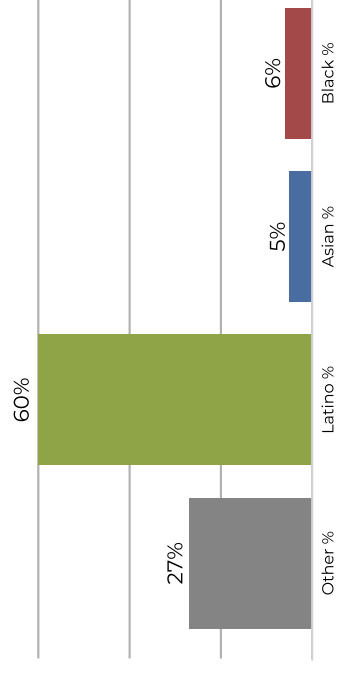
District 6



2020 Census

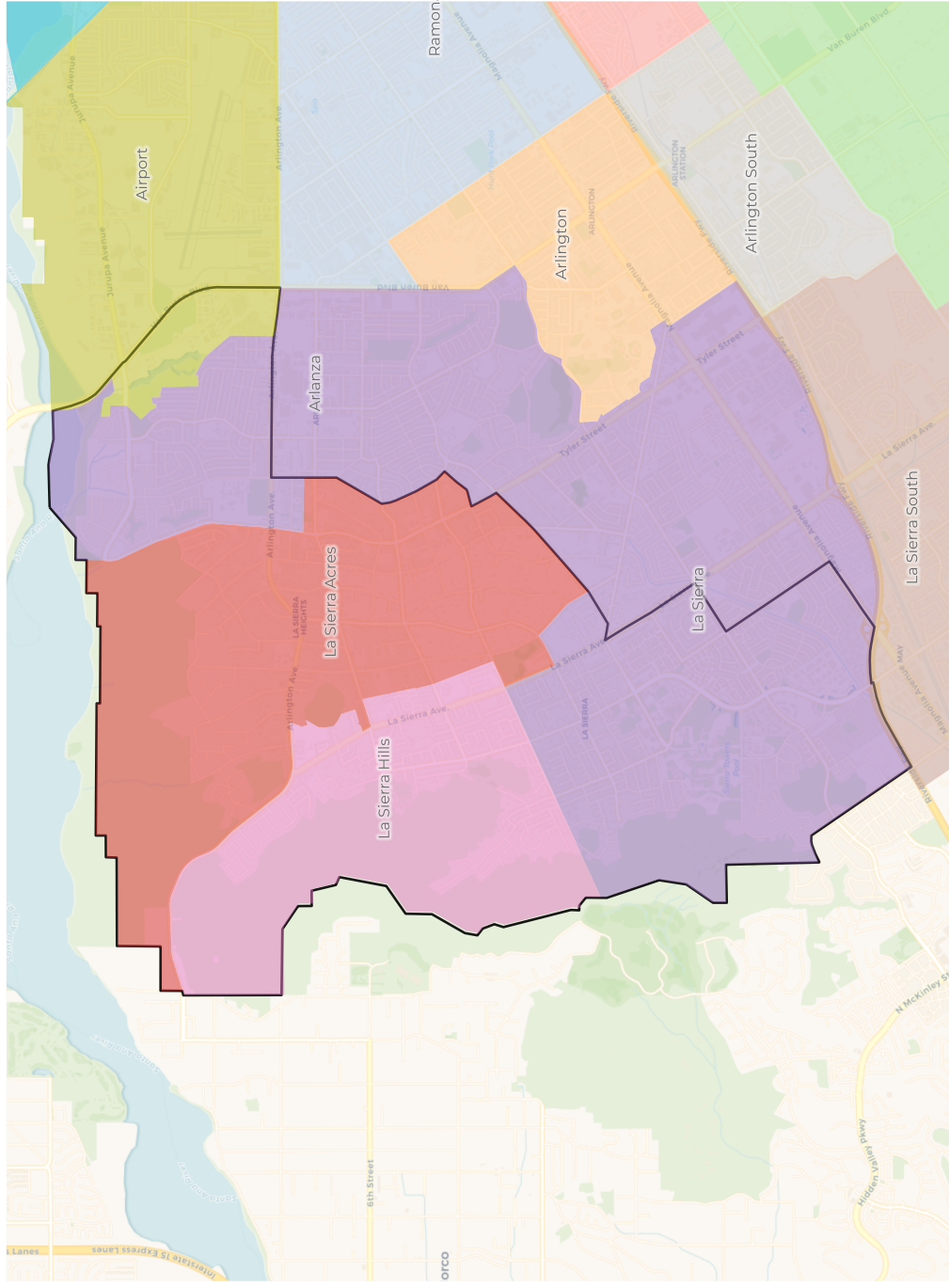


Citizen Voting Age Population

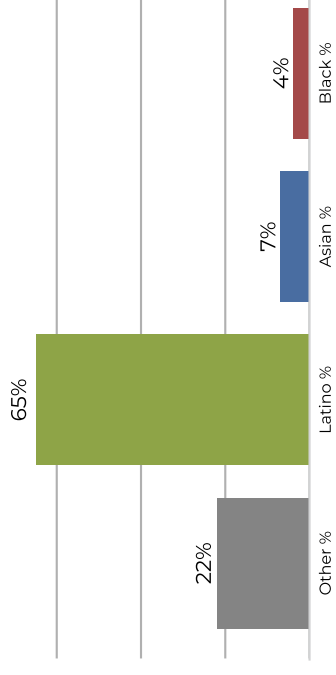


Population	Deviation	Deviation %	Other	Other %	Latino	Latino %	Asian	Asian %	Black	Black %
44,846	-360	-0.8%	8,706	19.4%	31,999	71.4%	2,188	4.9%	1,953	4.4%
Total CVAP	Other CVAP	Other CVAP %	Latino CVAP	Latino CVAP %	Asian CVAP	Asian CVAP %	Black CVAP	Black CVAP %		
26,521	7,202	27.2%	16,102	60.7%	1,569	5.9%	1,648	6.2%		

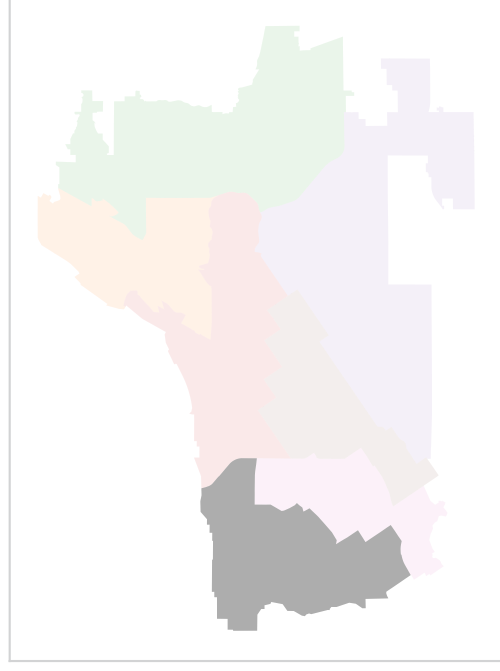
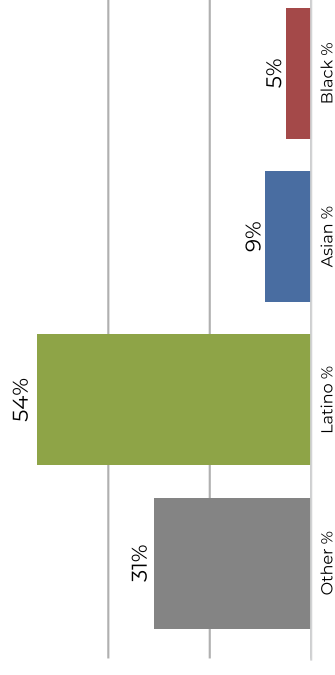
District 7



2020 Census



Citizen Voting Age Population



Population	Deviation	Deviation %	Other	Other %	Latino	Latino %	Asian	Asian %	Black	Black %
45,313	107	0.2%	10,347	22.8%	29,612	65.3%	3,224	7.1%	2,130	4.7%
Total CVAP	Other CVAP	Other CVAP %	Latino CVAP	Latino CVAP %	Asian CVAP	Asian CVAP %	Black CVAP	Black CVAP %		
30,817	9,590	31.1%	16,804	54.5%	2,822	9.2%	1,601	5.2%		