



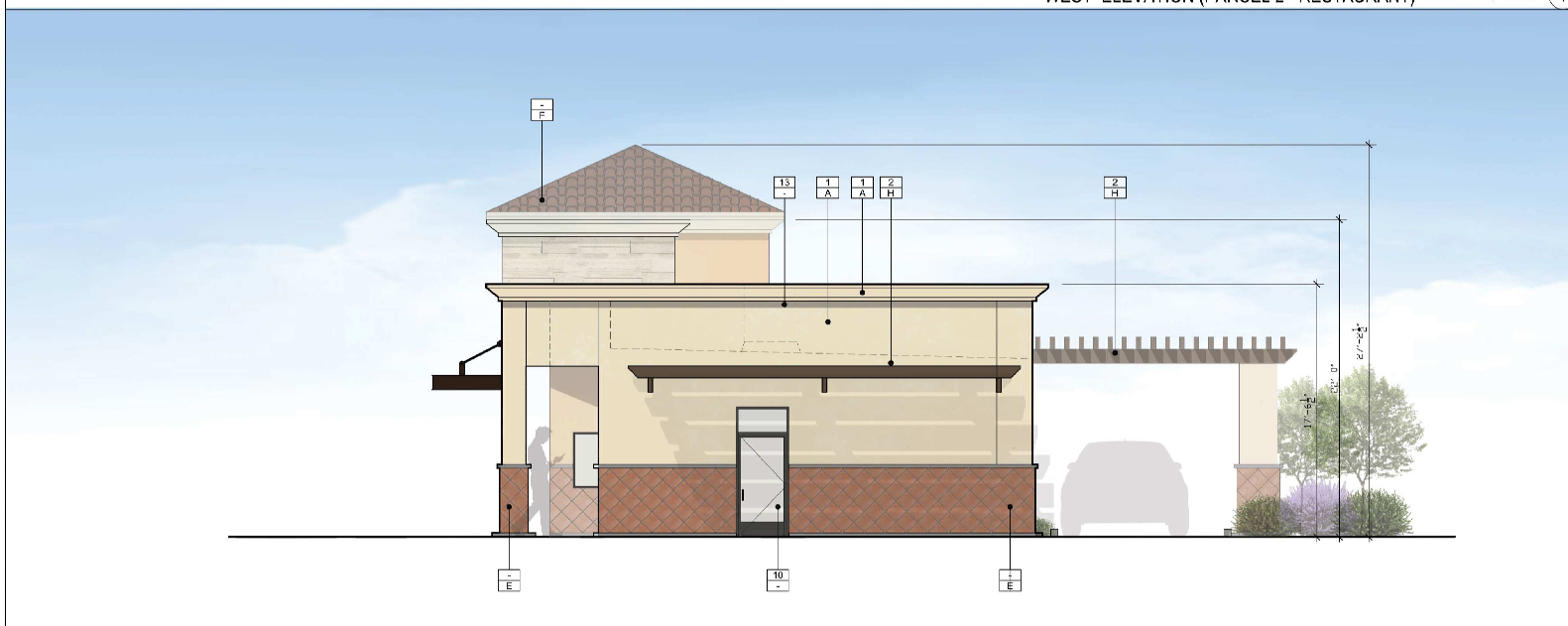
WEST ELEVATION (PARCEL 2 - RESTAURANT) 1/4"=1'-0" (1)

KEYED NOTES

- 1 EXTERIOR STUCCO TO BE PAINTED
- 2 TRILLES
- 3 PREFINISHED METAL CANOPY
- 4 CITY SCAPES ENGINE WALL MOUNTED TRILLES - CITY BROWN
- 5 DRIVE THRU PICK UP WINDOW
- 6 EXTERIOR WALL CYLINDER - KOCHER - 929484 - BRONZE
- 7 SERVICE & SECONDARY EGRESS DOOR
- 8 SURVEILLANCE CAMERA
- 9 EMERGENCY EGRESS LIGHT
- 10 EGRESS DOOR
- 11 SPAN/PREL STOREFRONT (PAVILION WINDOWS)
- 12 INTERNAL DOWNSPOUT FOR PRIMARY DRAIN
- 13 HVAC EQUIPMENT

EXTERIOR COLORS & FINISHES

- 1 SHERWIN WILLIAMS PAINT #SW 6386 - NAPPERY
- 2 SHERWIN WILLIAMS PAINT #SW 9022 - DAKOTA WHEAT
- 3 SHERWIN WILLIAMS PAINT #SW 9026 - KID MOCHA
- 4 ANODIZED ALUMINUM STOREFRONT SYSTEM #1C DARK BRONZE 44-14002164
- 5 TESORO COTTO TILE & STONE COTTO EXTERIOR FINISH SPACE CCCCCTO220202X1
- 6 SPANISH TILE ROOF
- 7 SHERWIN WILLIAMS PAINT #SW 7032 - WARM STONE
- 8 SHERWIN WILLIAMS PAINT #SW 7034 - STALLS BRONZE
- 9 VINIAGE RANCH COVERWOOD ELBORNEO STONE



EAST ELEVATION (PARCEL 2 - DRIVE THRU) 1/4"=1'-0" (2)

SHERWIN WILLIAMS PAINT #SW 6386 - NAPPERY	SHERWIN WILLIAMS PAINT #SW 9023 - DAKOTA WHEAT
SHERWIN WILLIAMS PAINT #SW 9022 - KID MOCHA	TESORO COTTO TILE & STONE COTTO EXTERIOR FINISH SPACE CCCCCTO220202X1
SHERWIN WILLIAMS PAINT #SW 7034 - STALLS BRONZE	SHERWIN WILLIAMS PAINT #SW 7032 - WARM STONE
SPANISH TILE ROOF	VINIAGE RANCH COVERWOOD ELBORNEO STONE

Rev. #	Date	Description

Job #: M - 1075	Date: 08/25/22
Scale: AS NOTED	Drawn By: SPD

80064300 VAN BUREN BLVD.	RIVERSIDE, CA 92503
EXTERIOR ELEVATION (PARCEL 2)	

ELEV