



Museum of Riverside Board Memorandum

City of Arts & Innovation

TO: MUSEUM OF RIVERSIDE BOARD DATE: APRIL 24, 2024

FROM: MUSEUM COLLECTIONS COMMITTEE

**SUBJECT: ACCESSION INTO THE PERMANENT COLLECTION SIX (6) LOTS OF
HISTORIC ARTIFACTS AND ARCHIVAL ITEMS FROM SIX (6) DONORS AND
A LARGE LOT CONTAINING 257 HERBARIUM SPECIMENS AND ONE (1)
JOSHUA TREE SPECIMEN**

ISSUE:

To approve a recommendation to accession into the permanent collection six (6) lots of historic artifacts and archival items from six (6) donors and a large lot containing 257 herbarium specimens and one (1) Joshua tree specimen.

RECOMMENDATION:

That the Museum of Riverside Board recommends that City Council approve accession into the permanent collection of six (6) lots of historic artifacts and archival items from six (6) donors and a large lot containing 257 herbarium specimens and one (1) Joshua tree specimen.

BACKGROUND:

Donated historic objects (lots 1-6)

LOT 1: Riverside memorabilia including a Riverside trolley token box, a small 1876 Mason and Hamlin organ, a twentieth-century phonograph record of "I Love You, California," and thirty-seven (37) music sheets, books, or pamphlets from 1900-1961 with connections to Riverside stores or events.

LOT 2: Two (2) crepe paper dolls crafted by former Riversider Leola Mae Gould in 1959 and donated by her heir.

LOT 3: Three (3) fragments of asphalt from the former Riverside International Raceway, circa 1989

LOT 4: Skelley building directory sign, circa 1940.

LOT 5: Three (3) cheerleader tops, two (2) cheerleader skirts, twelve (12) photos of the Ramona High School Cheer team, three (3) Ramona High School yearbooks, three (3) Sierra Junior High School yearbooks, and one (1) book of cheers.

LOT 6: One (1) postcard of Magnolia Avenue, circa 1910

Herbarium specimens (lot 7)

LOT 7: 257 herbarium specimens collected in 2021 by biologist Ivan Parr from California sites and one (1) Joshua tree specimen

The Collections Committee considered these recommendations at two regular meetings in November 2023 and March 2024:

LOTS 1, 2, and 7:

At its meeting on November 8, 2023, the Museum of Riverside's Collections Committee unanimously supported the recommendation to accession into the permanent collection of:

1. Riverside memorabilia including a Riverside trolley token box, Mason and Hamlin organ, "I Love You, California" phonograph record, and thirty-seven (37) archival paper items from 1900-1961
2. Two crepe paper dolls crafted by Leola Mae Gould in 1959
3. 257 herbarium specimens collected in 2021 by biologist Ivan Parr and one (1) Joshua tree specimen

LOTS 3 through 6:

At its meeting on March 13, 2024, the Museum of Riverside's Collections Committee unanimously supported the recommendation to accession into the permanent collection of:

4. Riverside International Raceway asphalt fragments
5. Skelley building sign
6. Ramona High School and other cheerleader's items
7. Magnolia Avenue postcard

DISCUSSION:

LOT 1:

This diverse collection of locally relevant content supplements but does not duplicate existing collection. The donor's family was among the original settlers of Rubidoux. They came to Riverside during the Depression, bringing the organ and other items with them. When Riverside ceased to have a trolley, a family member obtained token boxes from the trolley repository.



1876 Mason and Hamlin organ



Riverside trolley token boxes



LOT 2:

This donation by the artist's heir has established local provenance and contributes to the Museum's development of its decorative arts, crafts, and memorabilia collections while promoting the inclusion of female creators from Riverside. It contributes to the Museum's goal of expanding its collection to include more items from 1950 to the present.



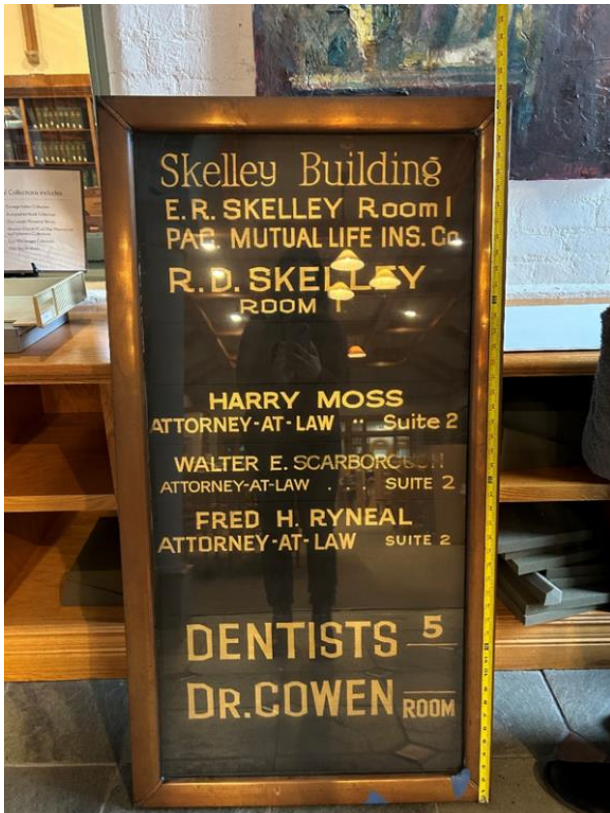
LOT 3:

The Riverside International Raceway closed in 1989. These fragments of track asphalt, annotated as having come from Turn 6, were donated by the widow of the racing enthusiast who collected them. The Museum possesses virtually nothing connected with this once-important regional site.



LOT 4:

The Skelley building directory sign is an institutional transfer to the Museum of Riverside from the A.K. Smiley Library in Redlands, California. The historical subject matter of this object relates to Riverside's early downtown businesses, architecture, and local historical figures.



LOT 5:

These items were donated by the widower of the original owner. They have clear provenience and accompanying documentation. The Museum currently has very little material on the history of Ramona High School. This material relates to a target area of collecting, mid-century objects.



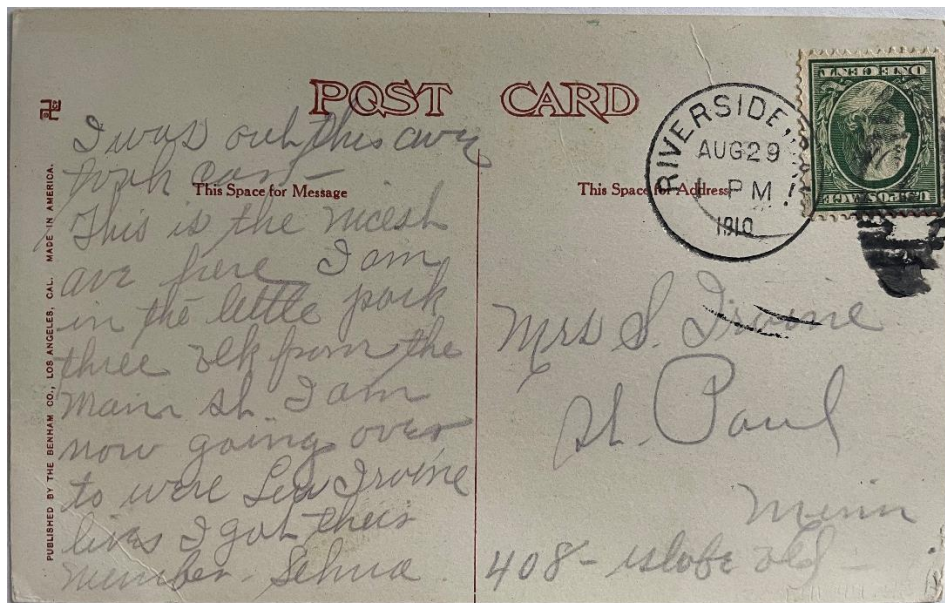
Three (3) Sierra Junior High School yearbooks, three (3) Ramona High School yearbooks, and one (1) book of cheers.



Twelve (12) photographs of Jacqueline Crilly and her cheer squad from 1967-1969.

Lot 6:

This postcard is offered as an institutional transfer to the Museum of Riverside from Marin History Museum in San Rafael, California. It is postmarked 1910, giving an approximate date for its use and production. It features the notable Magnolia Avenue in Riverside, California. The message from the sender describes Magnolia Avenue as the "nicest avenue here."

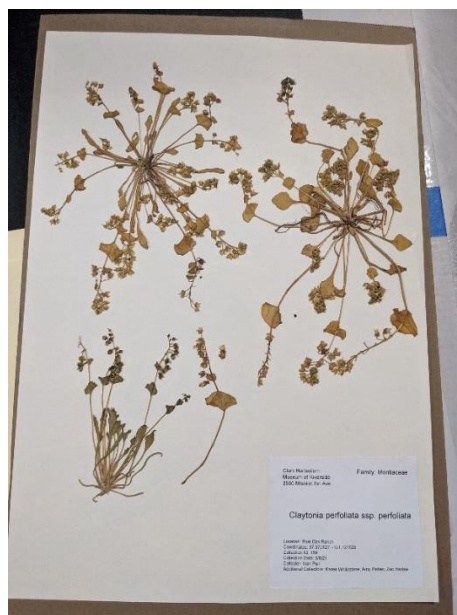
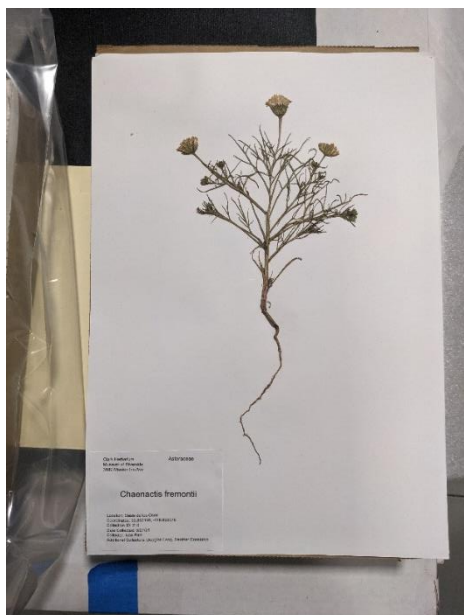


LOT 7:

These 257 herbarium specimens were collected on behalf of the Museum of Riverside, primarily by biologist Ivan Parr, across the state mostly during 2021. They were collected using museum supplies and were intended for permanent deposition with the Museum of Riverside. They were collected from recently fire-ravaged areas of California in order to provide a snapshot of the range of species that are the first to regenerate after a fire. Each has been fully prepared as a herbarium specimen.

The Joshua tree was likely collected prior to 1980 and has been on long-term exhibit in a diorama at the Museum of Riverside since that time.

Only two examples of the herbarium sheets are illustrated.



The Joshua tree appears in the center of the image below.



STRATEGIC PLAN ALIGNMENT:

The activities of the Museum of Riverside align with the Strategic Priority, “Arts, Culture and Recreation” and in particular goal 1.1 (strengthening Riverside’s portfolio of arts, culture, recreation, senior, and lifelong learning programs and amenities), goal 1.2 (enhancing equitable access to arts, culture, and recreational service offerings and facilities), and goal 1.5 (supporting programs and amenities to further develop literacy, health, and education of children, youth, and seniors throughout the community).

Museum programs further support the Strategic Priority, “Community Well-Being.” Specific goals supported by Museum programs and partnerships include goal 2.3, which includes strengthening neighborhood identities, and goal 2.5, which points to fostering relationships between community members and partner organizations.

1. **Community Trust** – The Museum’s Collections Committee is composed of Museum staff, Museum Board members, and members of the Riverside community. Strengthening the Museum’s collections in accordance with the Museum’s Collection Development Plan and with the involvement of community members builds community trust and supports the Museum’s mission.
2. **Equity** – New collection resources enrich the stories that the Museum can tell across all neighborhoods through exhibitions and programs that are offered equitably.
3. **Fiscal Responsibility** – These proposed new accessions came to the Museum by donation or modest purchase costs and pose minimal demands on current storage and recordkeeping resources.
4. **Innovation** – New accessions into the Museum’s permanent collection expand the diversity and flexibility of collection resources, enabling more programming options.
5. **Sustainability & Resiliency** – Strengthening the Museum’s collections in accordance with the Museum’s Collection Development Plan, collection management policies, and mission enhances the City’s ability to preserve Riverside’s history for the future in a considered and judicious manner.

FISCAL IMPACT:

There is no fiscal impact associated with this report.

Prepared by:
Approved by:

Robyn G. Peterson, Ph.D., Museum Director
Kris Martinez, Assistant City Manager