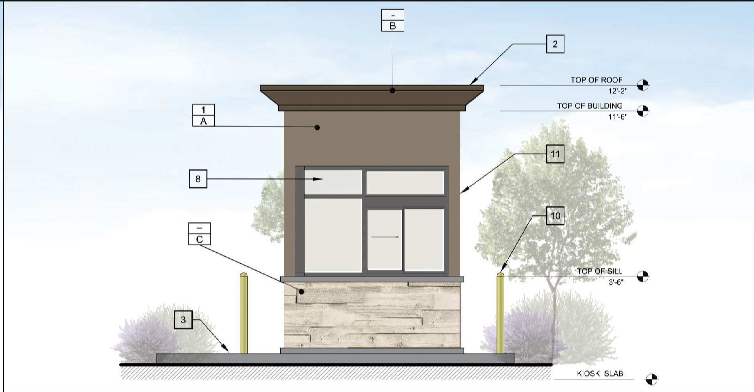


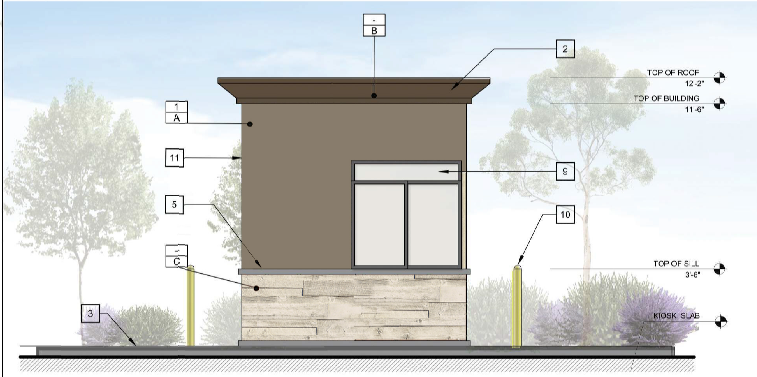
**4 NORTH ELEVATIONS**

SCALE: 3/8" = 1'-0"



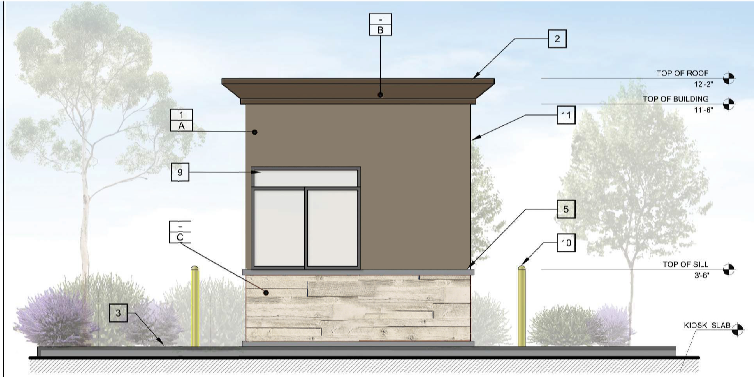
**3 SOUTH ELEVATIONS**

SCALE: 3/8" = 1'-0"



**5 WEST ELEVATIONS**

SCALE: 3/8" = 1'-0"



**2 EAST ELEVATIONS**

SCALE: 3/8" = 1'-0"

### KEYED NOTES

- 1 EXTERIOR STUCCO TO BE FINISHED
- 2 8" GANTRY (ACM GANTRY TO BE FINISHED)
- 3 6" PCC FOUNDATION
- 4 ACCESS DOOR
- 5 STONE MOLDING CHISELED STONE SILL - LIGHT GREY BY CORONADO STONE
- 6 ACCESS DOOR
- 7 RESORB COTTO TILE & STONE ACC TO EXTERIOR FINISH COORD TO ARCHITECT
- 8 ACCESS SERVICE WINDOW
- 9 WINDOW
- 10 42" HIGH BOLLARD
- 11 MASONRY WALL

### EXTERIOR COLORS & FINISHES

Key	Color / Finish
1	SHERWIN WILLIAMS PAINT #SW 6585 - GREY
2	SHERWIN WILLIAMS PAINT #SW 7034 - STATUS BRONZE
5	SHERWIN WILLIAMS PAINT #SW 7032 - WARM STONE
6	SHERWIN WILLIAMS PAINT #SW 7034 - STATUS BRONZE
7	VIKASE PAINT - COVERWOOD #LORAC FIVE

Rev. #	Description	Date

Job #:	M - 1075
Scale:	08/29/22
Date:	AS NOTED
Drawn By:	SPD

SHERWIN WILLIAMS PAINT  
#SW 6585 - GREY

SHERWIN WILLIAMS PAINT  
#SW 7034 - STATUS BRONZE

SHERWIN WILLIAMS PAINT  
#SW 7032 - WARM STONE

VIKASE PAINT - COVERWOOD  
#LORAC FIVE